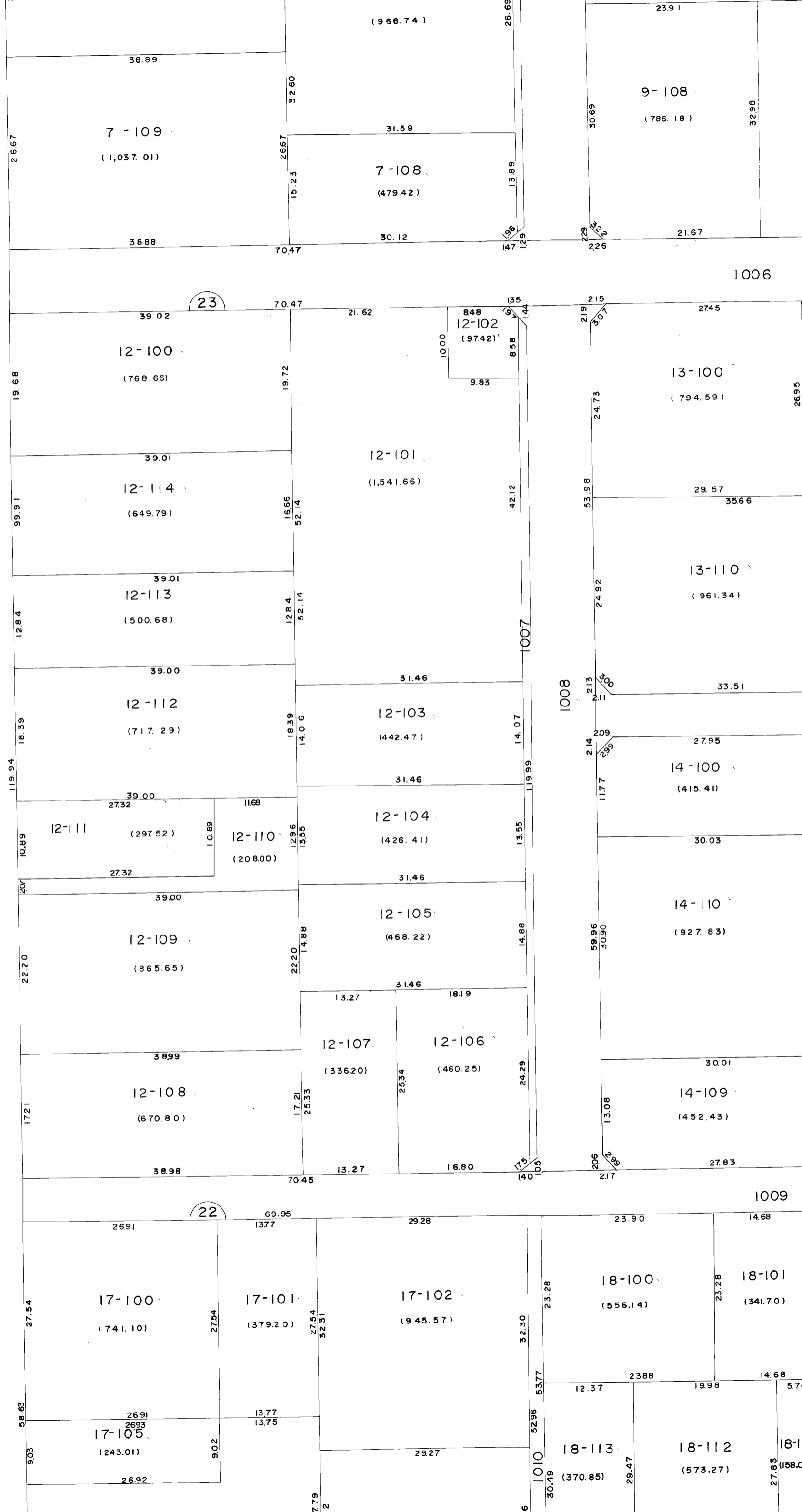


12

11



(966.74)

38.89

7-109

(1,037.01)

36.88

70.47

70.47

39.02

12-100

(768.66)

39.01

12-114

(649.79)

39.01

12-113

(500.68)

39.00

12-112

(717.29)

39.00

12-111

(297.52)

12-110

(208.00)

12-104

(426.41)

12-105

(468.22)

12-107

(336.20)

12-106

(460.25)

12-108

(670.80)

17-101

(379.20)

17-102

(945.57)

17-100

(741.10)

17-105

(243.01)

9-108

(786.18)

13-100

(794.59)

13-110

(961.34)

14-100

(415.41)

14-110

(927.83)

14-109

(452.43)

18-100

(556.14)

18-112

(573.27)

18-113

(370.85)

1006

1008

1009

1010

23

22

1006

1008

1009

1010