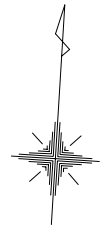
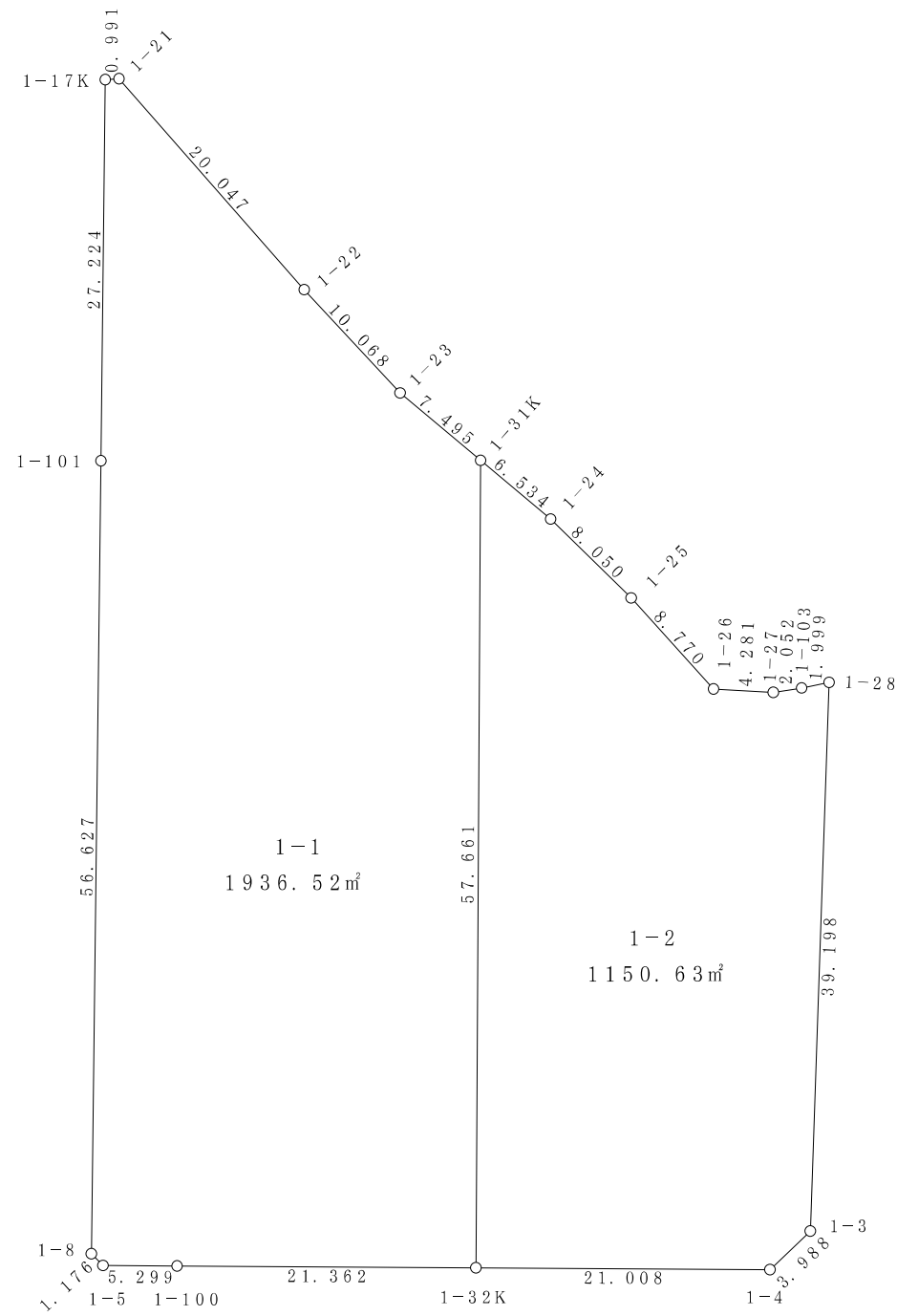


1街区



S = 1 / 500



面積 (座標法) 計算書

地番 = 1-1  
測点名

	[1] X(i)	[2] X(i+1)-X(i-1)	[3] Y(i)	[4] Y(i+1)-Y(i-1)	[2]*[3]	[1]*[4]	方向角	夾角	距離
1-32K	-149271.063	-58.759	-38721.561	-18.138	2275240.202799	2707478.540694	266-49-02	269-59-23	21.362
1-100	-149272.249	-1.466	-38742.890	-26.621	56797.076740	3973776.540629	266-58-17	180-09-15	5.299
1-5	-149272.529	0.506	-38748.182	-6.167	-19606.580092	920563.686343	311-55-58	224-57-41	1.176
1-8	-149271.743	57.345	-38749.057	-3.650	-2222064.673665	544841.861950	357-11-28	225-15-30	56.627
1-101	-149215.184	83.749	-38751.832	-4.126	-3245427.178168	615661.849184	357-09-20	179-57-52	27.224
1-17K	-149187.994	27.313	-38753.183	-0.368	-1058465.687279	54901.181792	82-52-04	265-42-44	0.991
1-21	-149187.871	-14.106	-38752.200	15.105	546638.533200	-2253482.791455	135-12-58	232-20-54	20.047
1-22	-149202.100	-21.167	-38738.078	21.418	819968.897026	-3195610.577800	133-33-33	178-20-35	10.068
1-23	-149209.038	-11.390	-38730.782	13.326	441143.606980	-1988359.640388	126-26-20	172-52-47	7.495
1-31K	-149213.490	-62.025	-38724.752	9.221	2401902.742800	-1375897.591290	176-49-39	230-23-19	57.661
合計				倍面積 面積	-3873.059659 1936.52	3873.059659 1936.52			207.950

面積 (座標法) 計算書

地番 = 1-2  
測点名

	[1] X(i)	[2] X(i+1)-X(i-1)	[3] Y(i)	[4] Y(i+1)-Y(i-1)	[2]*[3]	[1]*[4]	方向角	夾角	距離
1-31K	-149213.490	53.688	-38724.752	2.063	-2079054.485376	-307827.429870	126-28-50	309-39-11	6.534
1-24	-149217.375	-9.155	-38719.498	11.339	354477.004190	-1691975.815125	130-53-41	184-24-51	8.050
1-25	-149222.645	-11.401	-38713.413	12.356	441371.621613	-1843795.001620	134-21-12	183-27-31	8.770
1-26	-149228.776	-6.108	-38707.142	10.552	236423.223336	-1574662.044352	89-41-32	135-20-20	4.281
1-27	-149228.753	0.457	-38702.861	6.287	-17687.207477	-938201.170111	77-47-32	168-06-00	2.052
1-103	-149228.319	0.951	-38700.855	3.937	-36804.513105	-587511.891903	75-00-41	177-13-09	1.999
1-28	-149227.802	-38.667	-38698.924	2.985	1496371.294308	-445444.988970	178-27-33	283-26-52	39.198
1-3	-149266.986	-42.105	-38697.870	-1.661	1629373.816350	247932.463746	222-54-24	224-26-51	3.988
1-4	-149269.907	-4.077	-38700.585	-23.691	157782.285045	3536353.366737	266-50-44	223-56-20	21.008
1-32K	-149271.063	56.417	-38721.561	-24.167	-2184554.306937	3607433.779521	356-49-39	269-58-55	57.661
合計				倍面積 面積	-2301.268053 1150.63	2301.268053 1150.63			153.541