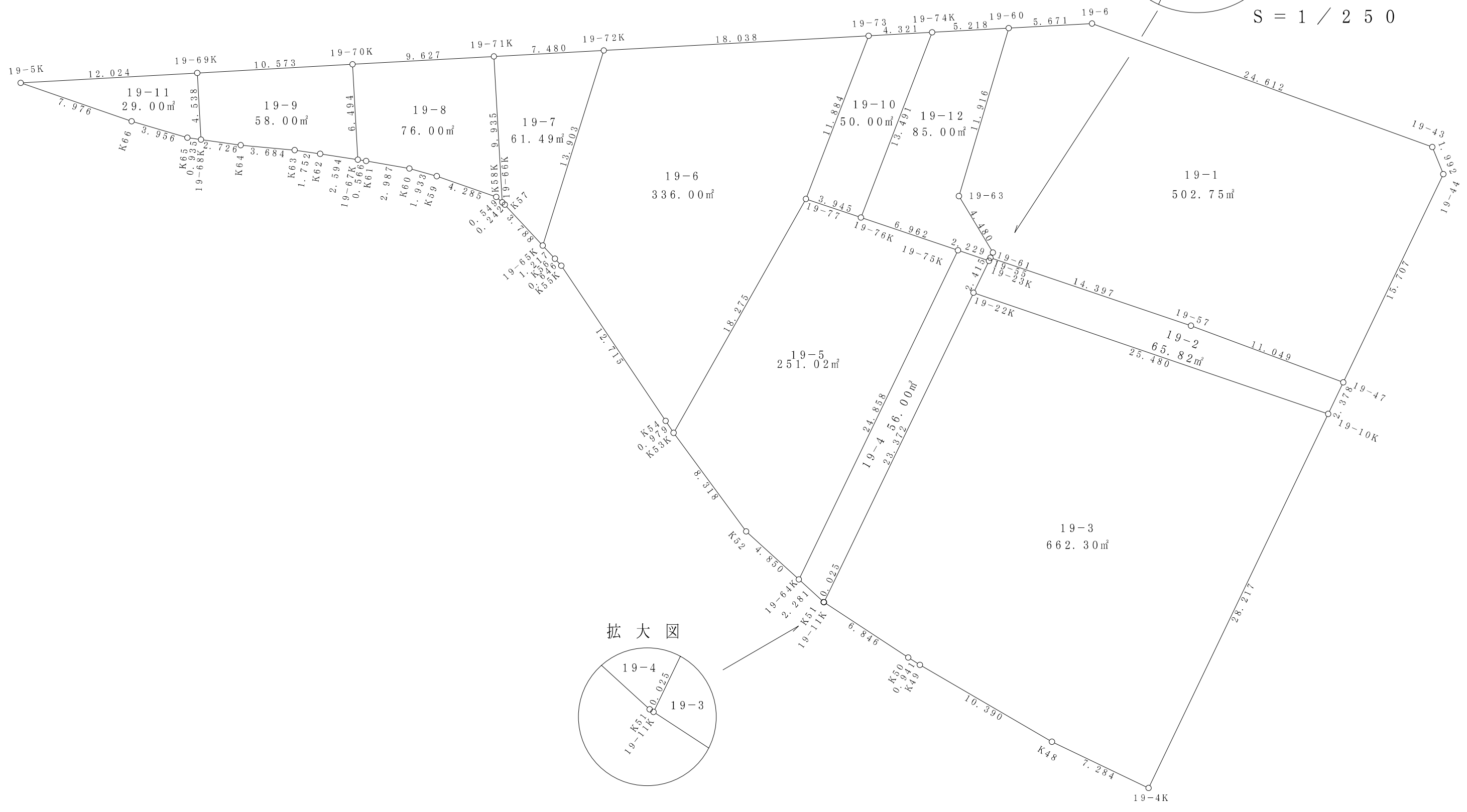
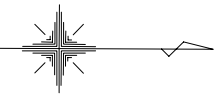
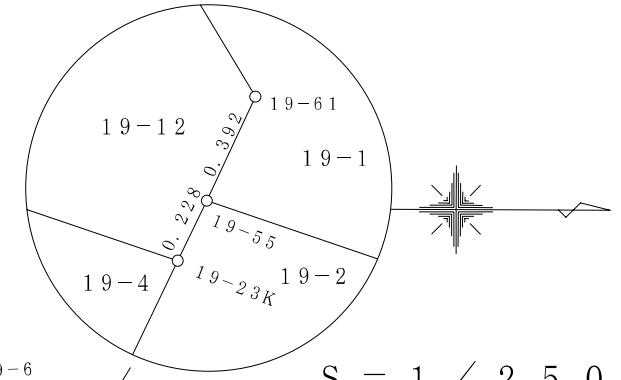
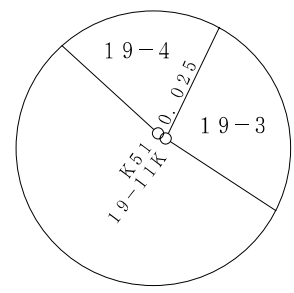


19街区

拡大図



拡大図



面積 (座標法) 計算書

地番 = 19-1

測点名	[1] X(i)	[2] X(i+1)-X(i-1)	[3] Y(i)	[4] Y(i+1)-Y(i-1)	[2]*[3]	[1]*[4]	方向角	夾角	距離
19-43	-149267.167	23.885	-38516.545	10.244	-919967.677325	-1529092.858748	67-52-41	227-55-30	1.992
19-44	-149266.417	-6.049	-38514.700	16.004	232975.420300	-2388859.737668	115-38-59	227-46-18	15.707
19-47	-149273.216	-17.155	-38500.541	10.307	660476.780855	-1538559.037312	200-24-11	264-45-12	11.049
19-57	-149283.572	-23.991	-38504.393	-8.473	923758.892463	1264879.705556	198-43-19	178-19-08	14.397
19-55	-149297.207	-13.469	-38509.014	-4.976	518677.909566	742902.902032	295-03-40	276-20-21	0.392
19-61	-149297.041	-2.144	-38509.369	-4.194	82564.087136	626151.789954	238-57-50	123-54-10	4.480
19-63	-149299.351	1.077	-38513.208	-15.263	-41478.725016	2278755.994313	286-30-51	227-33-01	11.916
19-60	-149295.964	9.049	-38524.632	-11.736	-348609.394968	1752137.433504	356-50-45	250-19-54	5.671
19-6	-149290.302	28.797	-38524.944	8.087	-1109402.812368	-1207310.672274	19-57-11	203-06-26	24.612
合計				倍面積 面積	-1005.519357 502.75	1005.519357 502.75			90.216

面積 (座標法) 計算書

地番 = 19-2

測点名	[1] X(i)	[2] X(i+1)-X(i-1)	[3] Y(i)	[4] Y(i+1)-Y(i-1)	[2]*[3]	[1]*[4]	方向角	夾角	距離
19-22K	-149298.357	-23.061	-38506.635	-10.412	888001.509735	1554494.493084	295-48-04	276-56-17	2.415
19-23K	-149297.306	1.150	-38508.809	-2.379	-44285.130350	355178.290974	295-46-38	179-58-34	0.228
19-55	-149297.207	13.734	-38509.014	4.416	-528882.798276	-659296.466112	18-43-19	262-56-41	14.397
19-57	-149283.572	23.991	-38504.393	8.473	-923758.892463	-1264879.705556	20-24-11	181-40-52	11.049
19-47	-149273.216	9.327	-38500.541	5.996	-359094.545907	-895042.203136	115-38-18	275-14-07	2.378
19-10K	-149274.245	-25.141	-38498.397	-6.094	967888.198977	909677.249030	198-51-47	263-13-29	25.480
合計				倍面積 面積	-131.658284 65.82	131.658284 65.82			55.947

面積 (座標法) 計算書

地番 = 19-3

測点名	[1] X(i)	[2] X(i+1)-X(i-1)	[3] Y(i)	[4] Y(i+1)-Y(i-1)	[2]*[3]	[1]*[4]	方向角	夾角	距離
19-10K	-149274.245	11.901	-38498.397	33.676	-458169.422697	-5026959.474620	115-38-33	276-46-46	28.217
19-4K	-149286.456	-18.781	-38472.959	22.292	722560.642979	-3327893.677152	205-35-14	269-56-41	7.284
K48	-149293.026	-15.548	-38476.105	-8.376	598226.480540	1250478.385776	210-13-20	184-38-06	10.390
K49	-149302.004	-9.775	-38481.335	-5.730	376155.049625	855500.482920	212-06-08	181-52-48	0.941
K50	-149302.801	-6.521	-38481.835	-4.256	250940.046035	635432.721056	213-16-20	181-10-12	6.846
19-11K	-149308.525	4.444	-38485.591	-24.800	-171029.966404	3702851.420000	295-47-20	262-31-00	23.372
19-22K	-149298.357	34.280	-38506.635	-12.806	-1320007.447800	1911914.759742	18-51-47	263-04-27	25.480
合計				倍面積 面積	-1324.617722 662.30	1324.617722 662.30			102.530

面積 (座標法) 計算書

地番 = 19-4
測点名

	[1] X(i)	[2] X(i+1)-X(i-1)	[3] Y(i)	[4] Y(i+1)-Y(i-1)	[2]*[3]	[1]*[4]	方向角	夾角	距離
19-75K	-149299.418	12.926	-38509.523	-21.668	-497774.094298	3235019.789224	18-40-44	262-53-28	2.229
19-23K	-149297.306	1.061	-38508.809	2.888	-40857.846349	-431170.619728	115-48-04	277-07-20	2.415
19-22K	-149298.357	-11.219	-38506.635	23.218	432005.938065	-3466409.252826	115-47-20	179-59-16	23.372
19-11K	-149308.525	-10.189	-38485.591	21.030	392129.686699	-3139958.280750	213-41-24	277-54-04	0.025
K51	-149308.546	-1.707	-38485.605	-1.550	65694.927735	231428.246300	222-20-04	188-38-40	2.281
19-64K	-149310.232	9.128	-38487.141	-23.918	-351310.623048	3571202.128976	295-47-16	253-27-12	24.858
合計				倍面積 面積	-112.011196 56.00	112.011196 56.00			55.180

面積 (座標法) 計算書

地番 = 19-5
測点名

	[1] X(i)	[2] X(i+1)-X(i-1)	[3] Y(i)	[4] Y(i+1)-Y(i-1)	[2]*[3]	[1]*[4]	方向角	夾角	距離
19-64K	-149310.232	-14.399	-38487.141	19.115	554176.343259	-2854065.084680	222-20-34	286-33-18	4.850
K52	-149313.817	-8.515	-38490.408	-9.967	327745.824120	1488210.814039	233-39-13	191-18-39	8.318
K53K	-149318.747	4.066	-38497.108	-22.607	-156529.241128	3375648.913429	299-29-23	245-50-10	18.275
19-77	-149309.751	12.733	-38513.015	-14.644	-490386.219995	2186491.993644	18-40-26	259-11-03	3.945
19-76K	-149306.014	10.333	-38511.752	3.492	-397941.933416	-521376.600888	18-40-18	179-59-52	6.962
19-75K	-149299.418	-4.218	-38509.523	24.611	162433.168014	-3674407.976398	115-47-16	277-06-58	24.858
合計				倍面積 面積	-502.059146 251.02	502.059146 251.02			67.208

面積 (座標法) 計算書

地番 = 19-6
測点名

	[1] X(i)	[2] X(i+1)-X(i-1)	[3] Y(i)	[4] Y(i+1)-Y(i-1)	[2]*[3]	[1]*[4]	方向角	夾角	距離
19-72K	-149323.498	22.159	-38523.112	-14.265	-853633.638808	2130099.698970	356-50-05	249-28-16	18.038
19-73	-149305.488	13.747	-38524.108	10.097	-529590.912676	-1507537.512336	111-01-18	294-11-13	11.884
19-77	-149309.751	-13.259	-38513.015	27.000	510644.065885	-4031363.277000	119-29-23	188-28-05	18.275
K53K	-149318.747	-9.540	-38497.108	15.093	367262.410320	-2253667.848471	236-14-42	296-45-19	0.979
K54	-149319.291	-7.636	-38497.922	-11.367	293970.132392	1697312.380797	236-05-51	179-51-09	12.715
K55K	-149326.383	-7.528	-38508.475	-11.029	289891.799800	1646920.678107	227-30-41	171-24-50	0.646
K56	-149326.819	-1.264	-38508.951	-1.368	48675.314064	204279.088392	227-07-51	179-37-10	1.217
19-65K	-149327.647	3.321	-38509.843	-14.161	-127891.188603	2114628.809167	287-21-49	240-13-58	13.903
合計				倍面積 面積	-672.017626 336.00	672.017626 336.00			77.657

面積 (座標法) 計算書

地番 = 19-7

測点名	[1] X(i)	[2] X(i+1)-X(i-1)	[3] Y(i)	[4] Y(i+1)-Y(i-1)	[2]*[3]	[1]*[4]	方向角	夾角	距離
19-72K	-149323.498	3.320	-38523.112	12.859	-127896.731840	-1920150.860782	107-21-49	290-30-20	13.903
19-65K	-149327.647	-6.725	-38509.843	10.492	258978.694175	-1566745.672324	227-09-01	299-47-12	3.788
K57	-149330.223	-2.755	-38512.620	-2.940	106102.268100	439030.855620	222-19-17	175-10-16	0.242
19-66K	-149330.402	-0.744	-38512.783	-10.082	28653.510552	1505549.112964	266-44-24	224-25-07	9.935
19-71K	-149330.967	6.904	-38522.702	-10.329	-265960.738608	1542439.558143	356-51-29	270-07-05	7.480
合計					倍面積 面積 -122.993621 61.49	122.993621 61.49			35.348

面積 (座標法) 計算書

地番 = 19-8

測点名	[1] X(i)	[2] X(i+1)-X(i-1)	[3] Y(i)	[4] Y(i+1)-Y(i-1)	[2]*[3]	[1]*[4]	方向角	夾角	距離
19-66K	-149330.402	0.160	-38512.783	9.549	-6162.045280	-1425956.008698	222-24-51	315-40-27	0.549
K58K	-149330.807	-4.451	-38513.153	-1.782	171422.044003	266107.498074	199-14-18	156-49-27	4.285
K59	-149334.853	-5.908	-38514.565	-1.930	227544.050020	288216.266290	195-32-47	176-18-29	1.933
K60	-149336.715	-4.804	-38515.083	-1.034	185026.458732	154414.163310	189-56-53	174-24-06	2.987
K61	-149339.657	-3.501	-38515.599	-0.603	134843.112099	90051.813171	188-50-47	178-53-54	0.566
19-67K	-149340.216	-0.922	-38515.686	-6.571	35511.462492	981314.559336	266-47-45	257-56-58	6.494
19-70K	-149340.579	9.249	-38522.170	-7.016	-356291.550330	1047773.502264	356-49-55	270-02-10	9.627
19-71K	-149330.967	10.177	-38522.702	9.387	-392045.538254	-1401769.787229	86-44-24	269-54-29	9.935
合計					倍面積 面積 -152.006518 76.00	152.006518 76.00			36.376

面積 (座標法) 計算書

地番 = 19-9

測点名	[1] X(i)	[2] X(i+1)-X(i-1)	[3] Y(i)	[4] Y(i+1)-Y(i-1)	[2]*[3]	[1]*[4]	方向角	夾角	距離
19-69K	-149351.135	10.303	-38521.579	-5.122	-396887.828437	764976.513470	356-47-44	269-59-29	10.573
19-70K	-149340.579	10.919	-38522.170	5.893	-420623.574230	-880064.032047	86-47-45	270-00-01	6.494
19-67K	-149340.216	-2.200	-38515.686	6.087	84734.509200	-909033.894792	188-48-18	282-00-33	2.594
K62	-149342.779	-4.297	-38516.083	-0.648	165503.608651	96774.120792	188-14-11	179-25-53	1.752
K63	-149344.513	-5.403	-38516.334	-0.588	208103.752602	87814.573644	185-14-53	177-00-42	3.684
K64	-149348.182	-6.369	-38516.671	-0.714	245312.677599	106634.601948	187-56-56	182-42-03	2.726
19-68K	-149350.882	-2.953	-38517.048	-4.908	113740.842744	733014.128856	266-48-15	258-51-19	4.538
合計					倍面積 面積 -116.011871 58.00	116.011871 58.00			32.361

面積 (座標法) 計算書

地番 = 19-10

測点名	[1] X(i)	[2] X(i+1)-X(i-1)	[3] Y(i)	[4] Y(i+1)-Y(i-1)	[2]*[3]	[1]*[4]	方向角	夾角	距離
19-76K	-149306.014	-8.577	-38511.752	11.330	330315.296904	-1691637.138620	198-40-26	267-39-00	3.945
19-77	-149309.751	0.526	-38513.015	-12.356	-20257.845890	1844871.283356	291-01-18	272-20-52	11.884
19-73	-149305.488	8.577	-38524.108	-11.330	-330421.274316	1691631.179040	356-51-20	245-50-02	4.321
19-74K	-149301.174	-0.526	-38524.345	12.356	20263.805470	-1844765.305944	111-01-26	294-10-06	13.491
合計				倍面積 面積	-100.017832 50.00	100.017832 50.00			33.641

面積 (座標法) 計算書

地番 = 19-11

測点名	[1] X(i)	[2] X(i+1)-X(i-1)	[3] Y(i)	[4] Y(i+1)-Y(i-1)	[2]*[3]	[1]*[4]	方向角	夾角	距離
19-68K	-149350.882	-0.673	-38517.048	4.402	25921.973304	-657442.582564	187-55-51	281-07-36	0.935
K65	-149351.808	-4.720	-38517.177	-1.249	181801.075440	186540.408192	196-26-48	188-30-57	3.956
K66	-149355.602	-11.332	-38518.297	-3.728	436489.341604	556797.684256	199-05-05	182-38-17	7.976
19-5K	-149363.140	4.467	-38520.905	-3.282	-172072.882635	490209.825480	356-47-12	337-42-07	12.024
19-69K	-149351.135	12.258	-38521.579	3.857	-472197.515382	-576047.327695	86-48-15	270-01-03	4.538
合計				倍面積 面積	-58.007669 29.00	58.007669 29.00			29.429

面積 (座標法) 計算書

地番 = 19-12

測点名	[1] X(i)	[2] X(i+1)-X(i-1)	[3] Y(i)	[4] Y(i+1)-Y(i-1)	[2]*[3]	[1]*[4]	方向角	夾角	距離
19-74K	-149301.174	10.050	-38524.345	-12.880	-387169.667250	1922999.121120	356-50-49	245-49-23	5.218
19-60	-149295.964	1.823	-38524.632	11.137	-70230.404136	-1662709.151068	106-30-51	289-40-02	11.916
19-63	-149299.351	-1.077	-38513.208	15.263	41478.725016	-2278755.994313	58-57-50	132-26-59	4.480
19-61	-149297.041	2.144	-38509.369	4.194	-82564.087136	-626151.789954	115-03-40	236-05-50	0.392
19-55	-149297.207	-0.265	-38509.014	0.560	10204.888710	-83606.435920	115-46-38	180-42-58	0.228
19-23K	-149297.306	-2.211	-38508.809	-0.509	85142.976699	75992.328754	198-40-44	262-54-06	2.229
19-75K	-149299.418	-8.708	-38509.523	-2.943	335340.926284	439388.187174	198-40-18	179-59-34	6.962
19-76K	-149306.014	-1.756	-38511.752	-14.822	67626.636512	2213013.739508	291-01-26	272-21-08	13.491
合計				倍面積 面積	-170.005301 85.00	170.005301 85.00			44.916