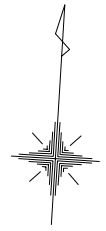
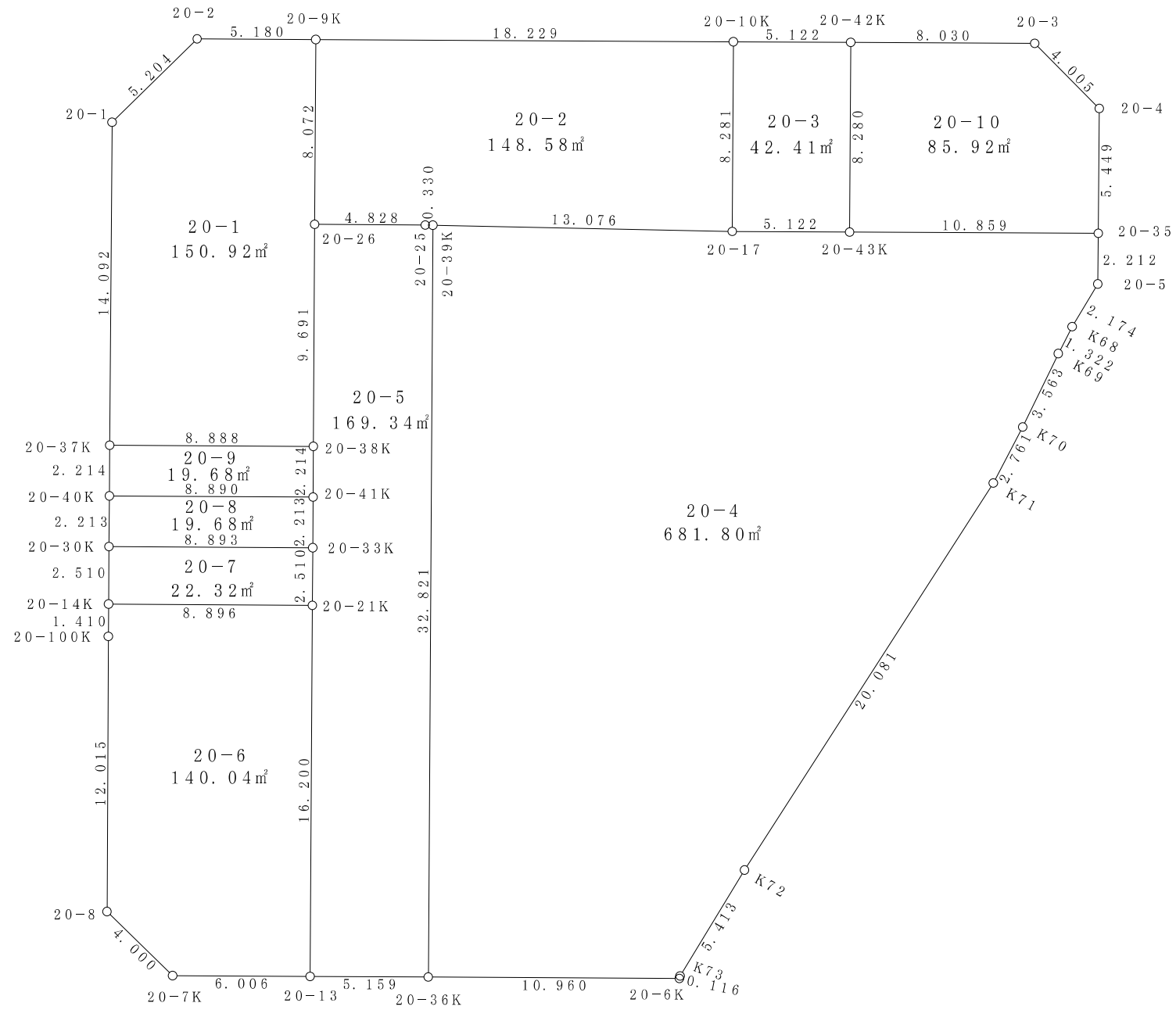


20街区



S = 1 / 250



面積 (座標法) 計算書

地番 = 20-1

測点名	[1] X(i)	[2] X(i+1)-X(i-1)	[3] Y(i)	[4] Y(i+1)-Y(i-1)	[2]*[3]	[1]*[4]	方向角	夾角	距離
20-37K	-149384.313	13.583	-38568.925	-9.634	-523881.708275	1439168.471442	356-54-45	270-03-58	14.092
20-1	-149370.241	17.937	-38569.684	2.726	-691824.421908	-407183.276966	42-02-25	225-07-40	5.204
20-2	-149366.376	4.153	-38566.199	8.657	-160165.424447	-1293064.717032	86-48-46	224-46-21	5.180
20-9K	-149366.088	-7.772	-38561.027	5.616	299696.301844	-838839.950208	176-50-49	270-02-03	8.072
20-26	-149374.148	-17.736	-38560.583	0.977	683910.500088	-145938.542596	176-50-49	180-00-00	9.691
20-38K	-149383.824	-10.165	-38560.050	-8.342	391962.908250	1246159.859808	266-50-47	269-59-58	8.888
合計				倍面積 面積	-301.844448 150.92	301.844448 150.92			51.127

面積 (座標法) 計算書

地番 = 20-2

測点名	[1] X(i)	[2] X(i+1)-X(i-1)	[3] Y(i)	[4] Y(i+1)-Y(i-1)	[2]*[3]	[1]*[4]	方向角	夾角	距離
20-25	-149373.882	-0.279	-38555.762	-5.151	10757.057598	769424.866182	266-50-31	179-05-52	4.828
20-26	-149374.148	7.794	-38560.583	-5.265	-300541.183902	786454.889220	356-50-49	270-00-18	8.072
20-9K	-149366.088	9.074	-38561.027	17.757	-349902.758998	-2652293.624616	86-48-41	269-57-52	18.229
20-10K	-149365.074	-7.254	-38542.826	18.660	279589.659804	-2787152.280840	176-49-21	270-00-40	8.281
20-17	-149373.342	-8.795	-38542.367	-12.606	338980.117765	1883000.349252	267-41-24	270-52-03	13.076
20-39K	-149373.869	-0.540	-38555.432	-13.395	20819.933280	2000862.975255	267-44-39	180-03-15	0.330
合計				倍面積 面積	-297.174453 148.58	297.174453 148.58			52.816

面積 (座標法) 計算書

地番 = 20-3

測点名	[1] X(i)	[2] X(i+1)-X(i-1)	[3] Y(i)	[4] Y(i+1)-Y(i-1)	[2]*[3]	[1]*[4]	方向角	夾角	距離
20-43K	-149373.056	-8.553	-38537.253	-4.655	329609.124909	695331.575680	266-47-57	269-58-37	5.122
20-17	-149373.342	7.982	-38542.367	-5.573	-307645.173394	832457.634966	356-49-21	270-01-24	8.281
20-10K	-149365.074	8.553	-38542.826	4.655	-329656.790778	-695294.419470	86-48-37	269-59-16	5.122
20-42K	-149364.789	-7.982	-38537.712	5.573	307608.017184	-832409.969097	176-49-20	270-00-43	8.280
合計				倍面積 面積	-84.822079 42.41	84.822079 42.41			26.805

面積 (座標法) 計算書

地番 = 20-4

測点名	[1] X(i)	[2] X(i+1)-X(i-1)	[3] Y(i)	[4] Y(i+1)-Y(i-1)	[2]*[3]	[1]*[4]	方向角	夾角	距離
20-39K	-149373.869	33.298	-38555.432	11.259	-1283818.774736	-1681800.391071	87-41-24	270-50-40	13.076
20-17	-149373.342	0.813	-38542.367	18.179	-31334.944371	-2715457.984218	86-47-57	179-06-33	5.122
20-43K	-149373.056	0.893	-38537.253	15.956	-34413.766929	-2383396.481536	86-47-44	179-59-47	10.859
20-35	-149372.449	-1.602	-38526.411	10.952	61719.310422	-1635927.061448	177-08-57	270-21-13	2.212
20-5	-149374.658	-4.138	-38526.301	-0.892	159421.833538	133242.194936	207-26-57	210-18-00	2.174
K68	-149376.587	-3.138	-38527.303	-1.536	120898.676814	229442.437632	203-49-50	176-22-53	1.322
K69	-149377.796	-4.505	-38527.837	-1.888	173567.905685	282025.278848	202-19-58	178-30-08	3.563
K70	-149381.092	-5.815	-38529.191	-2.485	224047.245665	371212.013620	204-10-46	181-50-48	2.761
K71	-149383.611	-20.041	-38530.322	-10.940	772186.183202	1634256.704340	209-14-26	185-03-40	20.081
K72	-149401.133	-22.308	-38540.131	-12.337	859753.242348	1843161.777821	207-50-36	178-36-10	5.413
K73	-149405.919	-4.899	-38542.659	-2.552	188820.486441	381283.905288	191-59-27	164-08-51	0.116
20-6K	-149406.032	-0.721	-38542.683	-10.967	27789.274443	1638535.952944	266-49-12	254-49-45	10.960
20-36K	-149406.640	32.163	-38553.626	-12.749	-1240000.273038	1904785.253360	356-50-44	270-01-32	32.821
合計				倍面積 面積	-1363.600516 681.80	1363.600516 681.80			110.480

面積 (座標法) 計算書

地番 = 20-5

測点名	[1] X(i)	[2] X(i+1)-X(i-1)	[3] Y(i)	[4] Y(i+1)-Y(i-1)	[2]*[3]	[1]*[4]	方向角	夾角	距離
20-36K	-149406.640	-33.057	-38553.626	-3.345	1274467.214682	499765.210800	266-49-19	269-58-35	5.159
20-13	-149406.926	15.889	-38558.777	-6.042	-612660.407753	902716.646892	356-50-49	270-01-30	16.200
20-21K	-149390.751	18.681	-38559.668	-1.029	-720333.157908	153723.082779	356-50-53	180-00-04	2.510
20-33K	-149388.245	4.716	-38559.806	-0.260	-181848.045096	38840.943700	356-50-25	179-59-32	2.213
20-41K	-149386.035	4.421	-38559.928	-0.244	-170473.441688	36450.192540	356-50-30	180-00-05	2.214
20-38K	-149383.824	11.887	-38560.050	-0.655	-458363.314350	97846.404720	356-50-49	180-00-19	9.691
20-26	-149374.148	9.942	-38560.583	4.288	-383369.316186	-640516.346624	86-50-31	269-59-42	4.828
20-25	-149373.882	0.279	-38555.762	5.151	-10757.057598	-769424.866182	87-44-39	180-54-08	0.330
20-39K	-149373.869	-32.758	-38555.432	2.136	1262998.841456	-319062.584184	176-50-44	269-06-05	32.821
合計				倍面積 面積	-338.684441 169.34	338.684441 169.34			75.966

面積 (座標法) 計算書

地番 = 20-6

測点名	[1] X(i)	[2] X(i+1)-X(i-1)	[3] Y(i)	[4] Y(i+1)-Y(i-1)	[2]*[3]	[1]*[4]	方向角	夾角	距離
20-21K	-149390.751	-15.686	-38559.668	9.774	604846.952248	-1460145.200274	176-50-49	269-59-52	16.200
20-13	-149406.926	-16.508	-38558.777	-5.106	636528.290716	762871.764156	266-49-18	269-58-29	6.006
20-7K	-149407.259	2.282	-38564.774	-9.024	-88004.814268	1348251.105216	310-49-24	224-00-06	4.000
20-8	-149404.644	14.611	-38567.801	-3.701	-563514.140411	552946.587444	356-47-03	225-57-39	12.015
20-100K	-149392.648	13.404	-38568.475	-0.750	-516971.838900	112044.486000	356-54-37	180-07-34	1.410
20-14K	-149391.240	1.897	-38568.551	8.807	-73164.541247	-1315688.650680	86-50-57	269-56-20	8.896
合計				倍面積 面積	-280.091862 140.04	280.091862 140.04			48.527

面積 (座標法) 計算書

地番 = 20-7

測点名	[1] X(i)	[2] X(i+1)-X(i-1)	[3] Y(i)	[4] Y(i+1)-Y(i-1)	[2]*[3]	[1]*[4]	方向角	夾角	距離
20-14K	-149391.240	2.017	-38568.551	-9.018	-77792.767367	1347210.202320	356-54-59	270-04-02	2.510
20-30K	-149388.734	2.995	-38568.686	8.745	-115513.214570	-1306404.478830	86-50-53	269-55-54	8.893
20-33K	-149388.245	-2.017	-38559.806	9.018	77775.128702	-1347183.193410	176-50-53	270-00-00	2.510
20-21K	-149390.751	-2.995	-38559.668	-8.745	115486.205660	1306422.117495	266-50-57	270-00-04	8.896
合計				倍面積 面積	-44.647575 22.32	44.647575 22.32			22.809

面積 (座標法) 計算書

地番 = 20-8

測点名	[1] X(i)	[2] X(i+1)-X(i-1)	[3] Y(i)	[4] Y(i+1)-Y(i-1)	[2]*[3]	[1]*[4]	方向角	夾角	距離
20-30K	-149388.734	1.721	-38568.686	-8.999	-66376.708606	1344349.217266	356-55-04	270-04-11	2.213
20-40K	-149386.524	2.699	-38568.805	8.758	-104097.204695	-1308327.177192	86-50-49	269-55-45	8.890
20-41K	-149386.035	-1.721	-38559.928	8.999	66361.636088	-1344324.928965	176-50-25	269-59-36	2.213
20-33K	-149388.245	-2.699	-38559.806	-8.758	104072.916394	1308342.249710	266-50-53	270-00-28	8.893
合計				倍面積 面積	-39.360819 19.68	39.360819 19.68			22.209

面積 (座標法) 計算書

地番 = 20-9

測点名	[1] X(i)	[2] X(i+1)-X(i-1)	[3] Y(i)	[4] Y(i+1)-Y(i-1)	[2]*[3]	[1]*[4]	方向角	夾角	距離
20-40K	-149386.524	1.722	-38568.805	-8.997	-66415.482210	1344030.556428	356-53-36	270-02-47	2.214
20-37K	-149384.313	2.700	-38568.925	8.755	-104136.097500	-1307859.660315	86-50-47	269-57-11	8.888
20-38K	-149383.824	-1.722	-38560.050	8.997	66400.406100	-1344006.264528	176-50-30	269-59-43	2.214
20-41K	-149386.035	-2.700	-38559.928	-8.755	104111.805600	1307874.736425	266-50-49	270-00-19	8.890
合計				倍面積 面積	-39.368010 19.68	39.368010 19.68			22.206

面積 (座標法) 計算書

地番 = 20-10

測点名	[1] X(i)	[2] X(i+1)-X(i-1)	[3] Y(i)	[4] Y(i+1)-Y(i-1)	[2]*[3]	[1]*[4]	方向角	夾角	距離
20-42K	-149364.789	8.713	-38537.712	7.559	-335779.084656	-1129048.440051	86-48-58	269-59-38	8.030
20-3	-149364.343	-2.219	-38529.694	11.007	85497.390986	-1644053.323401	131-43-13	224-54-15	4.005
20-4	-149367.008	-8.106	-38526.705	3.283	312297.470730	-490371.887264	176-54-25	225-11-12	5.449
20-35	-149372.449	-6.048	-38526.411	-10.548	233007.733728	1575580.592052	266-47-44	269-53-19	10.859
20-43K	-149373.056	7.660	-38537.253	-11.301	-295195.357980	1688064.905856	356-49-20	270-01-36	8.280
合計				倍面積 面積	-171.847192 85.92	171.847192 85.92			36.623