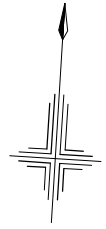
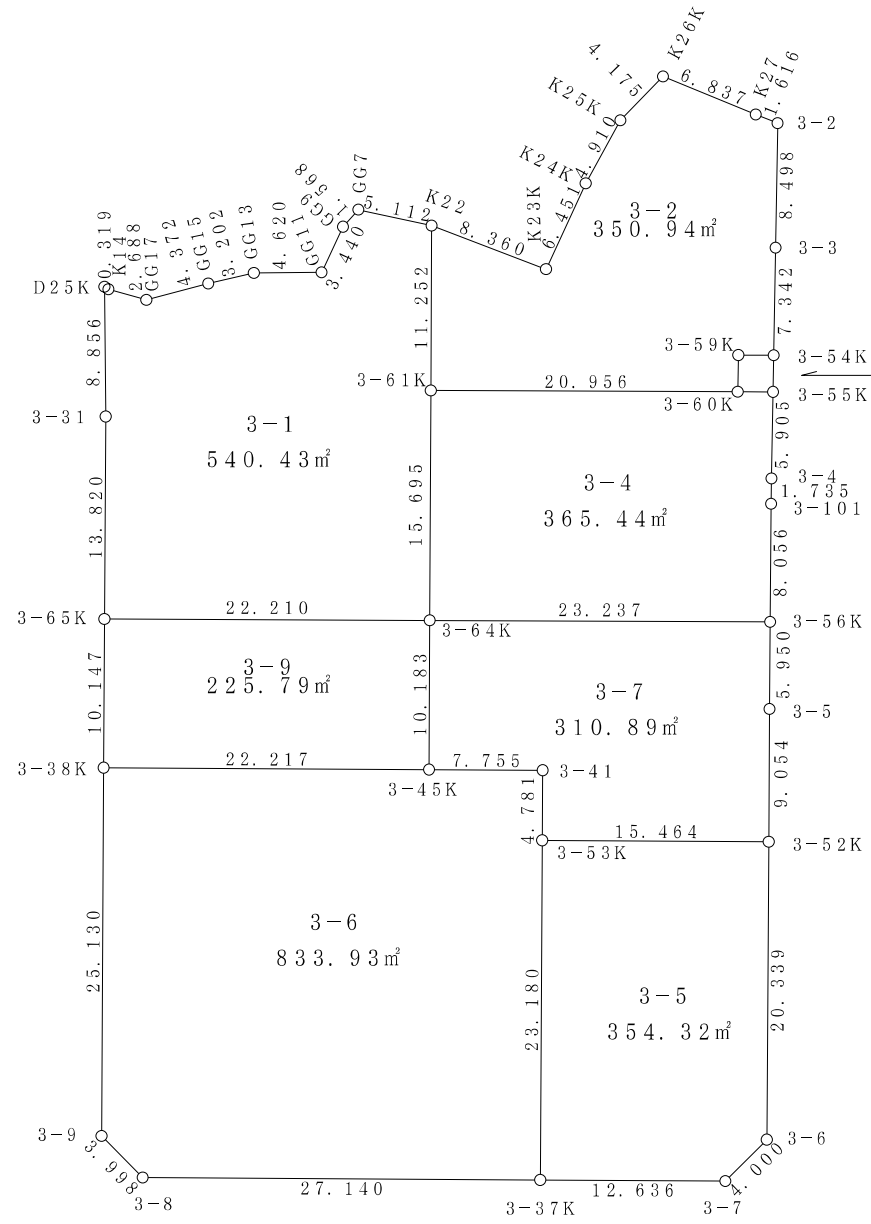


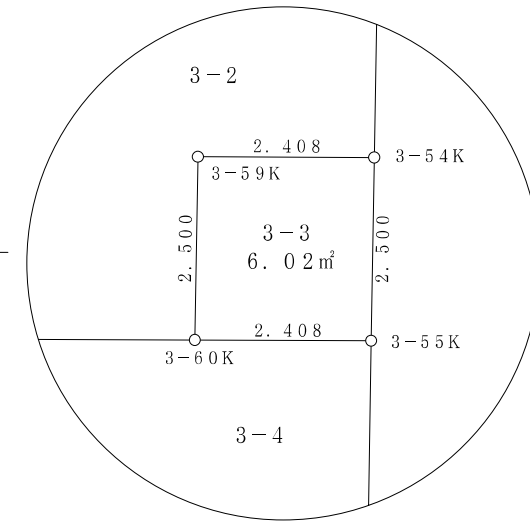
### 3街区



S = 1 / 500



拡大図



面積 (座標法) 計算書

地番 = 3-1  
測点名

	[1] X(i)	[2] X(i+1)-X(i-1)	[3] Y(i)	[4] Y(i+1)-Y(i-1)	[2]*[3]	[1]*[4]	方向角	夾角	距離
3-65K	-149228.645	12.538	-38645.047	-22.932	-484531.599286	3422111.287140	356-51-21	270-06-38	13.820
3-31	-149214.846	22.633	-38645.805	-1.383	-874670.504565	206364.132018	355-57-11	179-05-50	8.856
D25K	-149206.012	8.679	-38646.430	-0.346	-335412.365970	51625.280152	119-03-17	303-06-06	0.319
K14	-149206.167	-0.718	-38646.151	2.907	27747.936418	-433742.327469	102-05-30	163-02-13	2.688
GG17	-149206.730	0.808	-38643.523	6.780	-31223.966584	-1011621.629400	71-43-36	149-38-06	4.372
GG15	-149205.359	2.281	-38639.371	7.222	-88136.405251	-1077561.102698	73-29-21	181-45-45	3.202
GG13	-149204.449	1.232	-38636.301	7.679	-47599.922832	-1145740.963871	86-00-13	192-30-52	4.620
GG11	-149204.127	3.519	-38631.692	5.880	-135944.924148	-877320.266760	21-40-51	115-40-38	3.440
GG9	-149200.930	4.426	-38630.421	2.244	-170978.243346	-334806.886920	38-22-07	196-41-16	1.568
GG7	-149199.701	0.450	-38629.448	6.025	-17383.251600	-898928.198525	98-45-57	240-23-50	5.112
K22	-149200.480	-12.013	-38624.396	5.688	463994.869148	-848652.330240	176-45-35	257-59-38	11.252
3-61K	-149211.714	-26.904	-38623.760	1.523	1039133.639040	-227249.440422	176-45-37	180-00-02	15.695
3-64K	-149227.384	-16.931	-38622.873	-21.287	653923.862763	3176603.323208	266-44-43	269-59-06	22.210
合計				倍面積 面積	-1080.876213 540.43	1080.876213 540.43			97.154

面積 (座標法) 計算書

地番 = 3-2  
測点名

	[1] X(i)	[2] X(i+1)-X(i-1)	[3] Y(i)	[4] Y(i+1)-Y(i-1)	[2]*[3]	[1]*[4]	方向角	夾角	距離
3-61K	-149211.714	10.045	-38623.760	-21.558	-387975.669200	3216706.130412	356-45-35	270-00-44	11.252
K22	-149200.480	8.742	-38624.396	7.344	-337654.469832	-1095728.325120	107-20-33	290-34-58	8.360
K23K	-149202.972	3.517	-38616.416	10.326	-135813.935072	-1540669.888872	21-19-35	93-59-02	6.451
K24K	-149196.963	10.446	-38614.070	4.448	-403362.575220	-663628.091424	25-20-56	184-01-21	4.910
K25K	-149192.526	7.603	-38611.968	4.824	-293566.792704	-719704.745424	40-41-15	195-20-19	4.175
K26K	-149189.360	0.962	-38609.246	9.194	-37142.094652	-1371646.975840	108-48-21	248-07-06	6.837
K27	-149191.564	-2.705	-38602.774	8.008	104420.503670	-1194726.044512	108-03-54	179-15-33	1.616
3-2	-149192.065	-8.991	-38601.238	1.907	347063.730858	-284509.267955	177-29-52	249-25-58	8.498
3-3	-149200.555	-15.825	-38600.867	0.694	610858.720275	-103545.185170	177-28-43	179-58-51	7.342
3-54K	-149207.890	-7.472	-38600.544	-2.081	288423.264768	310501.619090	266-44-18	269-15-35	2.408
3-59K	-149208.027	-2.635	-38602.948	-2.294	101718.767980	342283.213938	177-28-43	90-44-25	2.500
3-60K	-149210.525	-3.687	-38602.838	-20.812	142328.663706	3105369.446300	266-44-51	269-16-08	20.956
合計				倍面積 面積	-701.885423 350.94	701.885423 350.94			85.305

面積 (座標法) 計算書

地番 = 3-3  
測点名

	[1] X(i)	[2] X(i+1)-X(i-1)	[3] Y(i)	[4] Y(i+1)-Y(i-1)	[2]*[3]	[1]*[4]	方向角	夾角	距離
3-59K	-149208.027	2.635	-38602.948	2.294	-101718.767980	-342283.213938	86-44-18	269-15-35	2.408
3-54K	-149207.890	-2.361	-38600.544	2.514	91135.884384	-375108.635460	177-28-43	270-44-25	2.500
3-55K	-149210.388	-2.635	-38600.434	-2.294	101712.143590	342288.630072	266-44-18	269-15-35	2.408
3-60K	-149210.525	2.361	-38602.838	-2.514	-91141.300518	375115.259850	357-28-43	270-44-25	2.500
合計				倍面積 面積	-12.040524 6.02	12.040524 6.02			9.816

面積 (座標法) 計算書

地番 = 3-4  
測点名

	[1] X(i)	[2] X(i+1)-X(i-1)	[3] Y(i)	[4] Y(i+1)-Y(i-1)	[2]*[3]	[1]*[4]	方向角	夾角	距離
3-55K	-149210.388	-5.762	-38600.434	2.667	222415.700708	-397944.104796	177-26-50	270-42-32	5.905
3-4	-149216.287	-7.632	-38600.171	0.336	294596.505072	-50136.672432	177-35-17	180-08-27	1.735
3-101	-149218.020	-9.778	-38600.098	0.498	377431.758244	-74310.573960	176-58-34	179-23-17	8.056
3-56K	-149226.065	-9.364	-38599.673	-22.775	361447.337972	3398623.630375	266-44-46	269-46-12	23.237
3-64K	-149227.384	14.351	-38622.873	-24.087	-554276.850423	3594439.998408	356-45-37	270-00-51	15.695
3-61K	-149211.714	16.859	-38623.760	20.035	-651157.969840	-2989456.689990	86-44-51	269-59-14	20.956
3-60K	-149210.525	1.326	-38602.838	23.326	-51187.363188	-3480484.706150	86-44-18	179-59-27	2.408
合計				倍面積 面積	-730.881455 365.44	730.881455 365.44			77.992

面積 (座標法) 計算書

地番 = 3-5  
測点名

	[1] X(i)	[2] X(i+1)-X(i-1)	[3] Y(i)	[4] Y(i+1)-Y(i-1)	[2]*[3]	[1]*[4]	方向角	夾角	距離
3-52K	-149241.046	-19.457	-38598.850	16.553	751017.824450	-2470387.034438	176-51-57	270-01-27	20.339
3-6	-149261.355	-23.296	-38597.738	-1.548	899172.904448	231056.577540	221-41-09	224-49-12	4.000
3-7	-149264.342	-3.688	-38600.398	-15.277	142358.267824	2280311.352734	266-49-12	225-08-03	12.636
3-37K	-149265.043	22.444	-38613.015	-13.893	-866630.508660	2073739.242399	356-50-40	270-01-28	23.180
3-53K	-149241.898	23.997	-38614.291	14.165	-926627.141127	-2114011.485170	86-50-30	269-59-50	15.464
合計				倍面積 面積	-708.653065 354.32	708.653065 354.32			75.619

面積 (座標法) 計算書

地番 = 3-6  
測点名

	[1] X(i)	[2] X(i+1)-X(i-1)	[3] Y(i)	[4] Y(i+1)-Y(i-1)	[2]*[3]	[1]*[4]	方向角	夾角	距離
3-38K	-149238.776	26.317	-38644.480	20.795	-1017006.780160	-3103420.346920	86-50-21	270-00-19	22.217
3-45K	-149237.551	1.652	-38622.297	29.926	-63804.034644	-4466082.951226	86-50-37	180-00-16	7.755
3-41	-149237.124	-4.347	-38614.554	8.006	167857.466238	-1194792.414744	176-50-48	270-00-11	4.781
3-53K	-149241.898	-27.919	-38614.291	1.539	1078072.390429	-229683.281022	176-50-40	179-59-52	23.180
3-37K	-149265.043	-24.638	-38613.015	-25.823	951347.463570	3854471.205389	266-50-47	270-00-07	27.140
3-8	-149266.536	1.175	-38640.114	-30.077	-45402.133950	4489489.603272	311-51-26	225-00-39	3.998
3-9	-149263.868	27.760	-38643.092	-4.366	-1072732.233920	651686.047688	356-50-02	224-58-36	25.130
合計				倍面積 面積	-1667.862437 833.93	1667.862437 833.93			114.201

面積 (座標法) 計算書

地番 = 3-7  
測点名

	[1] X(i)	[2] X(i+1)-X(i-1)	[3] Y(i)	[4] Y(i+1)-Y(i-1)	[2]*[3]	[1]*[4]	方向角	夾角	距離
3-64K	-149227.384	11.486	-38622.873	22.624	-443622.319278	-3376120.335616	86-44-46	269-59-19	23.237
3-56K	-149226.065	-4.622	-38599.673	23.520	178407.688606	-3509797.048800	176-55-01	270-10-15	5.950
3-5	-149232.006	-14.981	-38599.353	0.823	578256.907293	-122817.940938	176-48-55	179-53-54	9.054
3-52K	-149241.046	-9.892	-38598.850	-14.938	381819.824200	2229362.745148	266-50-30	270-01-35	15.464
3-53K	-149241.898	3.922	-38614.291	-15.704	-151445.249302	2343694.766192	356-50-48	270-00-18	4.781
3-41	-149237.124	4.347	-38614.554	-8.006	-167857.466238	1194792.414744	266-50-37	89-59-49	7.755
3-45K	-149237.551	9.740	-38622.297	-8.319	-376181.172780	1241507.186769	356-45-27	269-54-50	10.183
合計				倍面積 面積	-621.787499 310.89	621.787499 310.89			76.424

面積 (座標法) 計算書

地番 = 3-9  
測点名

	[1] X(i)	[2] X(i+1)-X(i-1)	[3] Y(i)	[4] Y(i+1)-Y(i-1)	[2]*[3]	[1]*[4]	方向角	夾角	距離
3-64K	-149227.384	-8.906	-38622.873	22.750	343975.306938	-3394922.986000	176-45-27	270-00-44	10.183
3-45K	-149237.551	-11.392	-38622.297	-21.607	439985.207424	3224575.764457	266-50-21	270-04-54	22.217
3-38K	-149238.776	8.906	-38644.480	-22.750	-344167.738880	3395182.154000	356-47-48	269-57-27	10.147
3-65K	-149228.645	11.392	-38645.047	21.607	-440244.375424	-3224383.332515	86-44-43	269-56-55	22.210
合計				倍面積 面積	-451.599942 225.79	451.599942 225.79			64.757