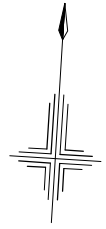
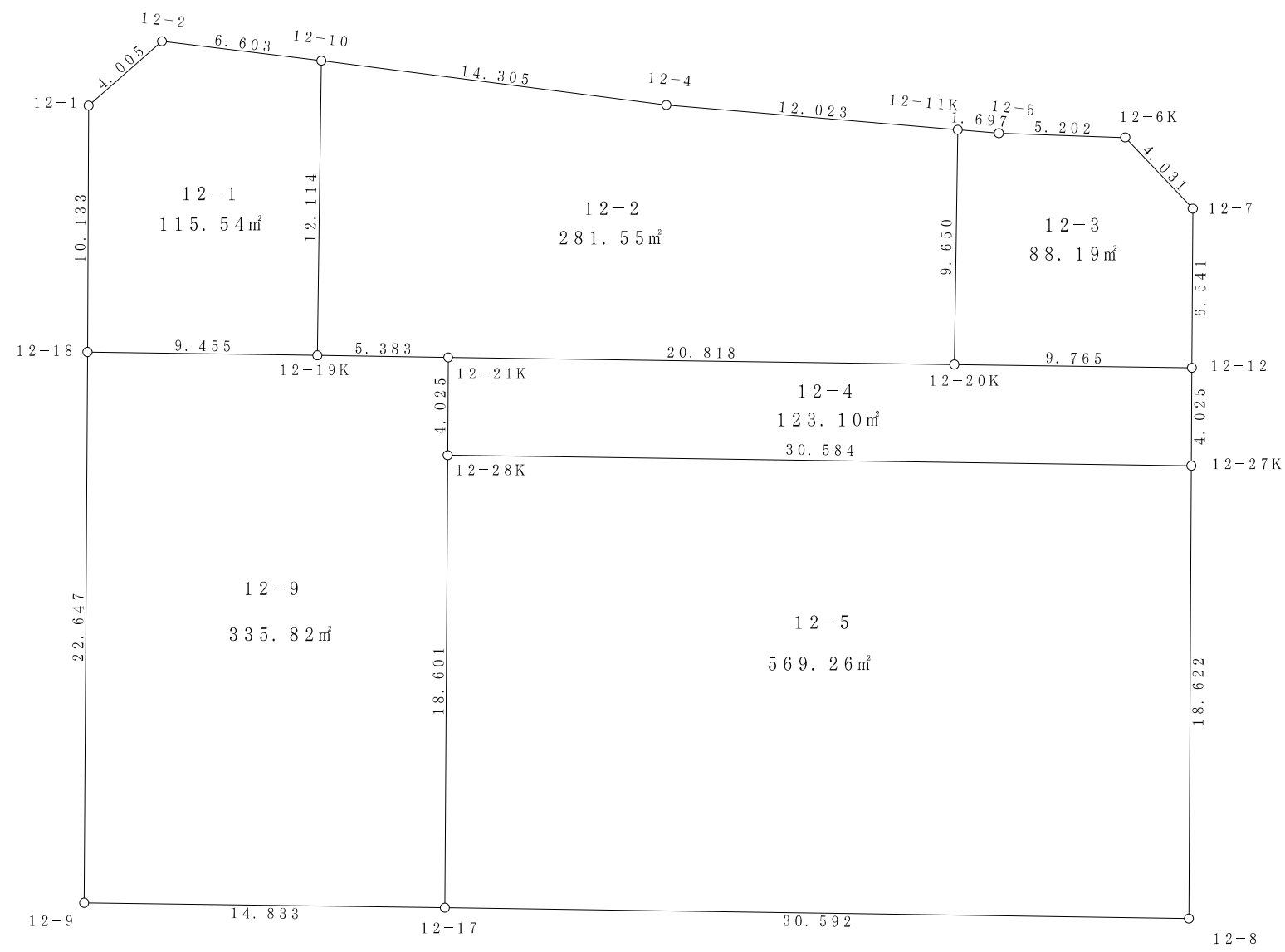


12街区



S = 1 / 500



面積 (座標法) 計算書

地番 = 12-1

測点名	[1] X(i)	[2] X(i+1)-X(i-1)	[3] Y(i)	[4] Y(i+1)-Y(i-1)	[2]*[3]	[1]*[4]	方向角	夾角	距離
12-1	-149492.041	12.934	-38630.446	2.279	-499646.188564	-340692.361439	45-18-12	228-31-00	4.005
12-2	-149489.224	2.421	-38627.599	9.438	-93517.417179	-1410879.296112	93-26-18	228-08-06	6.603
12-10	-149489.620	-12.496	-38621.008	7.166	482608.115968	-1071242.616920	177-16-46	263-50-28	12.114
12-19K	-149501.720	-12.538	-38620.433	-8.870	484222.988954	1326080.256400	267-20-42	270-03-56	9.455
12-18	-149502.158	9.679	-38629.878	-10.013	-373898.589162	1496965.108054	356-47-12	269-26-30	10.133
合計				倍面積 面積	-231.089983 115.54	231.089983 115.54			42.310

面積 (座標法) 計算書

地番 = 12-2

測点名	[1] X(i)	[2] X(i+1)-X(i-1)	[3] Y(i)	[4] Y(i+1)-Y(i-1)	[2]*[3]	[1]*[4]	方向角	夾角	距離
12-20K	-149500.494	-10.620	-38594.261	-20.341	409871.051820	3040989.548454	267-17-57	269-59-45	20.818
12-21K	-149501.475	-1.226	-38615.056	-26.172	47342.058656	3912752.603700	267-23-28	180-05-31	5.383
12-19K	-149501.720	11.855	-38620.433	-5.952	-457845.233215	889834.237440	357-16-46	269-53-18	12.114
12-10	-149489.620	11.151	-38621.008	13.698	-430662.860208	-2047708.814760	93-48-14	276-31-28	14.305
12-4	-149490.569	-1.235	-38606.735	26.293	47679.317725	-3930555.530717	91-21-47	177-33-33	12.023
12-11K	-149490.855	-9.925	-38594.715	12.474	383052.546375	-1864748.925270	177-18-12	265-56-25	9.650
合計				倍面積 面積	-563.118847 281.55	563.118847 281.55			74.293

面積 (座標法) 計算書

地番 = 12-3

測点名	[1] X(i)	[2] X(i+1)-X(i-1)	[3] Y(i)	[4] Y(i+1)-Y(i-1)	[2]*[3]	[1]*[4]	方向角	夾角	距離
12-11K	-149490.855	9.599	-38594.715	1.243	-370470.669285	-185817.132765	91-21-01	274-02-49	1.697
12-5	-149490.895	0.103	-38593.018	6.897	-3975.080854	-1031038.702815	88-25-29	177-04-28	5.202
12-6K	-149490.752	-2.608	-38587.818	8.147	100637.029344	-1217901.156544	133-01-48	224-36-19	4.031
12-7	-149493.503	-9.282	-38584.871	3.311	358144.772622	-494972.988433	176-48-36	223-46-48	6.541
12-12	-149500.034	-6.991	-38584.507	-9.390	269744.288437	1403805.319260	267-18-00	270-29-24	9.765
12-20K	-149500.494	9.179	-38594.261	-10.208	-354256.721719	1526101.042752	357-18-12	270-00-12	9.650
合計				倍面積 面積	-176.381455 88.19	176.381455 88.19			36.886

面積 (座標法) 計算書

地番 = 12-4

測点名	[1] X(i)	[2] X(i+1)-X(i-1)	[3] Y(i)	[4] Y(i+1)-Y(i-1)	[2]*[3]	[1]*[4]	方向角	夾角	距離
12-28K	-149505.494	2.578	-38614.834	-30.772	-99549.042052	4600583.061368	356-50-18	269-32-20	4.025
12-21K	-149501.475	5.000	-38615.056	20.573	-193075.280000	-3075693.845175	87-17-57	270-27-39	20.818
12-20K	-149500.494	1.441	-38594.261	30.549	-55614.330101	-4567090.591206	87-18-00	180-00-03	9.765
12-12	-149500.034	-3.559	-38584.507	9.977	137322.260413	-1491561.839218	176-49-27	269-31-27	4.025
12-27K	-149504.053	-5.460	-38584.284	-30.327	210670.190640	4534009.415331	267-17-58	270-28-31	30.584
合計				倍面積 面積	-246.201100 123.10	246.201100 123.10			69.217

面積 (座標法) 計算書

地番 = 12-5

測点名	[1] X(i)	[2] X(i+1)-X(i-1)	[3] Y(i)	[4] Y(i+1)-Y(i-1)	[2]*[3]	[1]*[4]	方向角	夾角	距離
12-27K	-149504.053	-17.152	-38584.284	31.584	661797.639168	-4721936.009952	176-49-01	269-31-03	18.622
12-8	-149522.646	-20.014	-38583.250	-29.525	772205.165500	4414656.123150	267-20-16	270-31-15	30.592
12-17	-149524.067	17.152	-38613.809	-31.584	-662304.051968	4722568.132128	356-50-28	269-30-12	18.601
12-28K	-149505.494	20.014	-38614.834	29.525	-772837.287676	-4414149.710350	87-17-58	270-27-30	30.584
合計				倍面積 面積	-1138.534976 569.26	1138.534976 569.26			98.399

面積 (座標法) 計算書

地番 = 12-9

測点名	[1] X(i)	[2] X(i+1)-X(i-1)	[3] Y(i)	[4] Y(i+1)-Y(i-1)	[2]*[3]	[1]*[4]	方向角	夾角	距離
12-18	-149502.158	23.050	-38629.878	8.192	-890418.687900	-1224721.678336	87-20-42	270-31-00	9.455
12-19K	-149501.720	0.683	-38620.433	14.822	-26377.755739	-2215914.493840	87-23-28	180-02-46	5.383
12-21K	-149501.475	-3.774	-38615.056	5.599	145733.221344	-837058.758525	176-50-18	269-26-50	4.025
12-28K	-149505.494	-22.592	-38614.834	1.247	872386.329728	-186433.351018	176-50-28	180-00-10	18.601
12-17	-149524.067	-19.276	-38613.809	-13.791	744319.782284	2062086.407997	267-17-00	270-26-32	14.833
12-9	-149524.770	21.909	-38628.625	-16.069	-846314.545125	2402713.529130	356-49-42	269-32-42	22.647
合計				倍面積 面積	-671.655408 335.82	671.655408 335.82			74.944