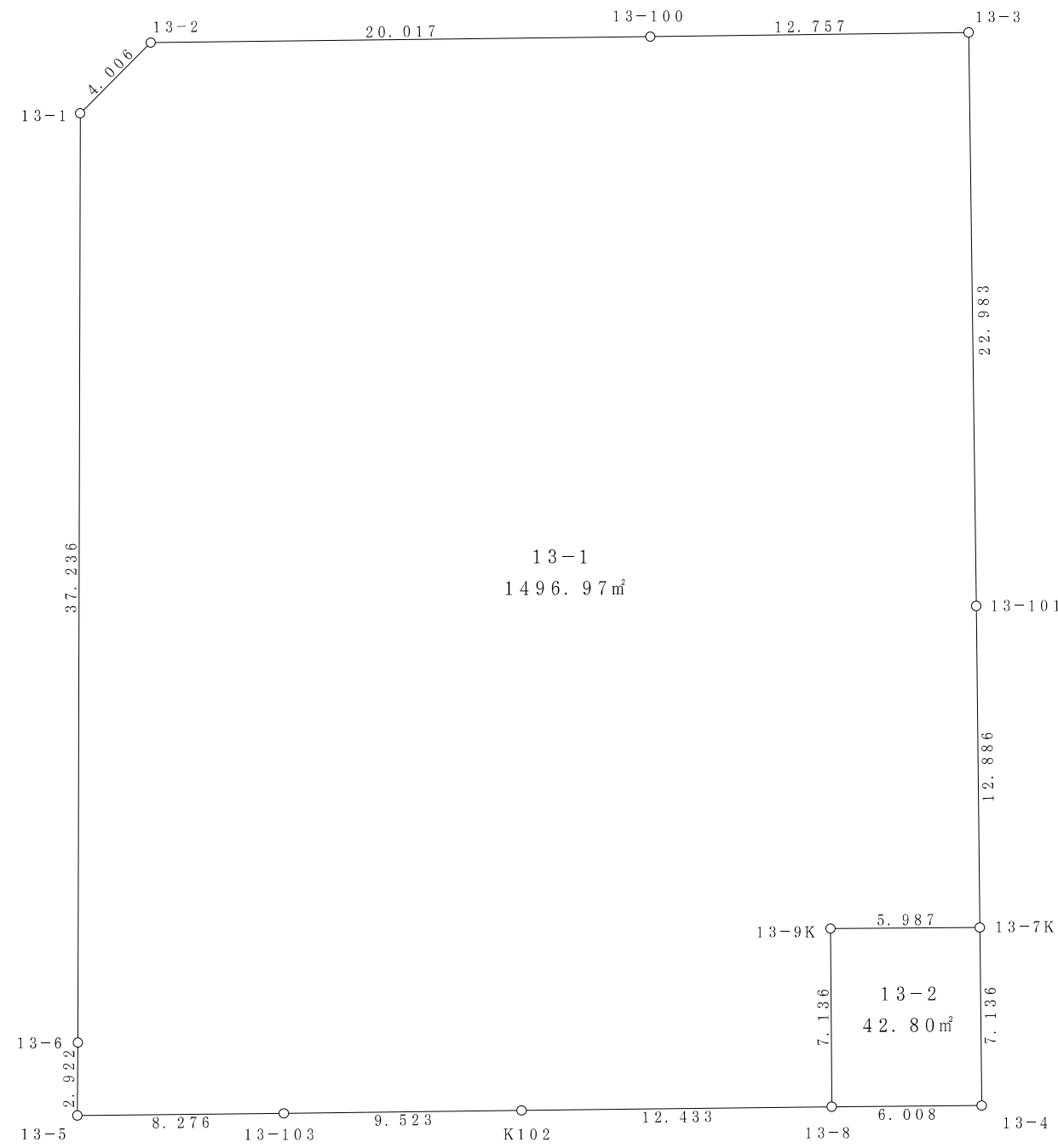


13街区



S = 1 / 250



面積 (座標法) 計算書

地番 = 13-1

測点名	[1] X(i)	[2] X(i+1)-X(i-1)	[3] Y(i)	[4] Y(i+1)-Y(i-1)	[2]*[3]	[1]*[4]	方向角	夾角	距離
13-1	-149536.655	40.148	-38736.120	1.523	-1555177.745760	-227744.325565	42-56-47	224-48-09	4.006
13-2	-149533.723	3.867	-38733.391	22.724	-149782.022997	-3398004.321452	87-19-22	224-22-35	20.017
13-100	-149532.788	1.549	-38713.396	32.737	-59967.050404	-4895254.880756	87-14-28	179-55-06	12.757
13-3	-149532.174	-22.342	-38700.654	13.852	864650.011668	-2071319.674248	177-13-54	269-59-26	22.983
13-101	-149555.130	-35.828	-38699.544	1.701	1386527.262432	-254393.276130	177-22-16	180-08-22	12.886
13-7K	-149568.002	-13.127	-38698.953	-5.391	508001.156031	806321.098782	267-33-33	270-11-17	5.987
13-9K	-149568.257	-7.385	-38704.935	-5.678	285835.944975	849248.563246	177-33-31	89-59-58	7.136
13-8	-149575.387	-7.711	-38704.631	-12.115	298451.409641	1812105.813505	267-19-17	269-45-46	12.433
K102	-149575.968	-1.033	-38717.050	-21.931	39994.712650	3280350.554208	267-16-46	179-57-29	9.523
13-103	-149576.420	-0.824	-38726.562	-17.780	31910.687088	2659468.747600	267-25-26	180-08-40	8.276
13-5	-149576.792	2.549	-38734.830	-8.352	-98735.081670	1249265.366784	358-21-10	270-55-44	2.922
13-6	-149573.871	40.137	-38734.914	-1.290	-1554703.243218	192950.293590	358-08-38	179-47-28	37.236
合計				倍面積 面積	-2993.959564 1496.97	2993.959564 1496.97			156.162

面積 (座標法) 計算書

地番 = 13-2

測点名	[1] X(i)	[2] X(i+1)-X(i-1)	[3] Y(i)	[4] Y(i+1)-Y(i-1)	[2]*[3]	[1]*[4]	方向角	夾角	距離
13-7K	-149568.002	-6.874	-38698.953	6.307	266016.602922	-943325.388614	177-23-23	269-49-50	7.136
13-4	-149575.131	-7.385	-38698.628	-5.678	285789.367780	849287.593818	267-33-29	270-10-06	6.008
13-8	-149575.387	6.874	-38704.631	-6.307	-266055.633494	943371.965809	357-33-31	270-00-02	7.136
13-9K	-149568.257	7.385	-38704.935	5.678	-285835.944975	-849248.563246	87-33-33	270-00-02	5.987
合計				倍面積 面積	-85.607767 42.80	85.607767 42.80			26.267