

街区略図

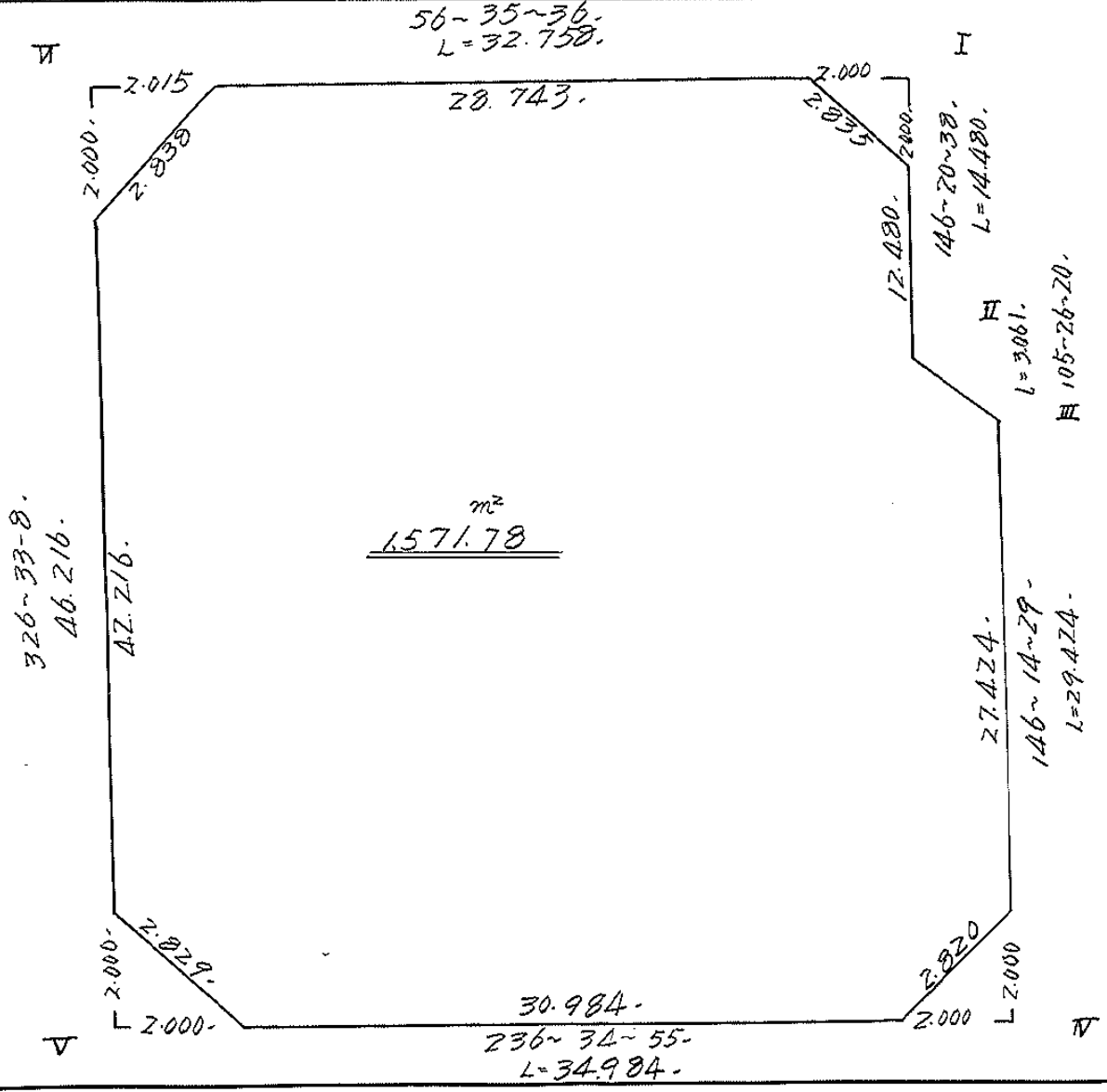
工区

ブロック

22

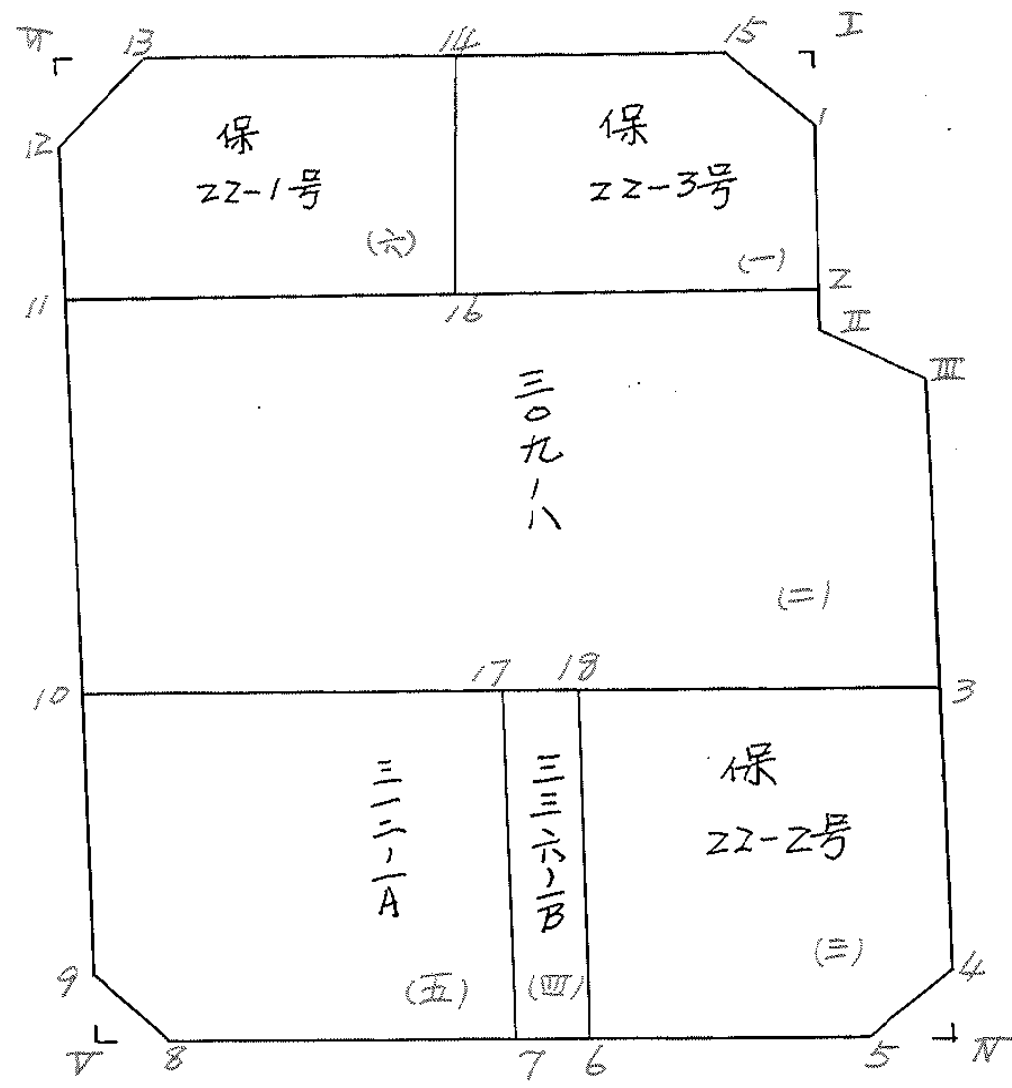
記入者

点検者



面地計算

画地略図	工区	ブロック	22	記入者	点検者
------	----	------	----	-----	-----



面積計算書

工
区

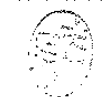
ブ
ロ
ック

22

計
算
者



精
算
者



備
考

(-) 係 22-3号
(-) 309-8

点	①	②	③	④	⑤	⑥	③ × ⑤		② × ⑥	
	X	X-(定数)	X _{n-1} -X _{n+1}	Y	Y-(定数)	Y _{n-1} -Y _{n+1}	+	-	+	-
(-) 1	^{-153,} 892.159	^{-153,890 =} 2.159	+ 7.577	^{-34,} 305.128	^{-34,300 =} 5.128	- 7.412			38.572.816	16.002.508
2	899.117	9.117	+ 16.005	300.494	0.494	+ 9.084			7.906.470	82.818.828
16	908.164	18.164	+ 0.395	314.212	14.212	+ 19.415			5.613.740	352.654.060
14	899.512	9.512	- 16.569	319.909	19.909	- 6.306	329.872.221			59.982.672
15	891.595	1.595	- 7.353	307.906	7.906	- 14.781	58.132.818			23.575.695
							388.005.039	52.093.026	99.560.875	435.472.888
							335.912.013			335.912.013
							x 1/2 = 167.956.006.5			
(-) 2	^{-153,} 899.117	^{-153,890 =} 9.117	- 14.676	^{-34,} 300.494	^{-34,280 =} 20.494	- 29.661	299.745.244			270.419.337
II	902.547	12.547	+ 4.245	298.211	18.211	- 5.234			77.305.695	65.670.998
III	903.362	13.362	+ 9.130	295.260	15.260	- 8.509			139.323.800	113.697.258
3	911.677	21.677	+ 27.519	289.702	9.702	+ 23.557			266.989.338	510.645.089
10	930.881	40.881	+ 5.496	318.817	38.817	+ 38.170			213.338.232	1560.427.770
11	917.173	27.173	- 31.764	327.872	47.872	- 18.323	1,570.606.208			497.890.879
							1,820.351.452.696	957.065	947.678.472	2,071.072.859
							1,123.394.387			1,123.394.387
							x 1/2 = 561.697.193.5			

面積計算書

工区

ブロック

22

計算者



精算者



備考

(E) 保 22-2号
(四) 336-1B

点	①	②	③	④	⑤	⑥	③ × ⑤		② × ⑥	
	X	X-(定数)	X _{n-1} -X _{n+1}	Y	Y-(定数)	Y _{n-1} -Y _{n+1}	+	-	+	-
(E) 3	⁻¹⁵³ 911.677	^{-153,910-} 1.677	+7068	⁻⁷⁴ 289.702	^{-34,280-} 9.702	-20.926		68.573736	35.092902	
4	926.162	16.162	+17.249	280.021	0.021	-9.124		0.362229	147.467088	
5	928.926	18.926	+9.143	280.578	0.578	+10.224		5.284654		193.499424
6	935.305	25.305	-9.832	290.245	10.245	+20.369	100.728840			515.437545
18	919.094	9.094	-23.628	300.947	20.947	-0.543	494.935716		4.938042	
							595.664556	74.270619	187.493032	708.936969
							521.443937			521.443937
							$\times \frac{1}{2} = 260.7219685$			
(四) 18	⁻¹⁵³ 919.094	^{-153,910-} 9.094	+12.827	⁻⁷⁴ 300.947	^{-34,290-} 10.947	-15.833		140.447169	143.985302	
6	935.305	25.305	+19.595	290.245	0.245	-5.573		4.800775	144.024765	
7	928.689	28.689	-12.827	295.374	5.374	+15.833	68.932298			454.237937
17	922.478	12.478	-19.595	306.078	16.078	+5.573	315.048410			69.539894
							383.980708	145.217944	285.010067	523.772831
							238.762764			238.762764
							$\times \frac{1}{2} = 119.381382$			

面積計算書

工区

ブロック

ZZ

計算者

精算者

備考

(四) 312-1A

(五) 保 72-1号

点	①	②	③	④	⑤	⑥	③ × ⑤		② × ⑥	
	X	X-(定数)	X _{n-1} -X _{n+1}	Y	Y-(定数)	Y _{n-1} -Y _{n+1}	+	-	+	-
(甲) 17	-153, 927.478	-153.920 7.478	+7.808	-34, 306.078	-34.290 16.078	-23.443		125.537074	58.091754	
7	938.689	18.689	+73.513	295.374	5.374	+0.367		126.358262		6765.478
8	945.991	25.991	+6.734	306.440	16.440	+13.837		110.706960		359.637467
9	945.423	25.423	-15.110	309.211	19.211	+12.377	290.278210			314.660471
10	930.881	10.881	-22.945	318.817	28.817	-3.133	661.206065		34.090173	
							951.484275	367.607246	92.181927	681.263356
							588.881429			588.881429
							$X \frac{1}{2} = 294.4407145$			
(乙) 14	-153, 899.512	-153.890 9.512	+0.743	-34, 319.909	-34.310 9.909	-17.688		7.367387	168.248256	
16	908.164	18.164	+17.661	314.212	4.212	+7.963		74.388132		144.639932
11	917.173	27.173	+2.035	327.872	17.872	+18.268		36.369520		496.396364
12	910.199	20.199	-9.752	332.480	22.480	+4.028	219.224960			81.361572
13	907.421	17.421	-10.687	331.900	21.900	-12.571	234.045300		218.999391	
							453.270260	118.120039	387.247647	772.397268
							335.150721			335.150721
							$X \frac{1}{2} = 167.5751105$			

面積計算書

工区

ブロック

22

計算者



精算者



備考

陽切 I, IV

I

IV

点	①	②	③	④	⑤	⑥	③ × ⑤		② × ⑥	
	X	X - (定数)	X _{n-1} - X _{n+1}	Y	Y - (定数)	Y _{n-1} - Y _{n+1}	+	-	+	-
I	⁻¹⁵³ 890.494	^{-153,890-} 0.494	+0.564	⁻³⁴ 306.236	^{-34,300-} 6.236	-2.778			3.517 104	1.372 332
1	892.159	2.159	+1.101	305.128	5.128	+1.670			5.645 928	3.605 530
15	891.595	1.595	-1.665	307.906	7.906	+1.108	13.163 490			1.767 260
							13.163 490	9.163 032	1.372 332	5.372 790
							4.000 458			4.000 458
								$\times \frac{1}{2} = 2.000 229$		
								<u>2.00</u>		
IV	⁻¹⁵³ 926.162	^{-153,920-} 6.162	-1.101	⁻³⁴ 290.021	^{-34,270-} 10.021	-1.669	11.033 121			10.284 378
IV	927.825	7.825	+2.764	278.909	8.909	+0.557			24.674 476	4.358 525
5	928.926	8.926	-1.663	290.578	10.578	+1.112	19.591 214			9.925 712
							28.674 335	24.674 476	10.284 378	14.284 237
							3.999 859			3.999 859
								$\times \frac{1}{2} = 1.999 9295$		
								<u>2.00</u>		

面積計算書

工区: ブロック: 計算者: 821 精算者: 徳山 備考: 隅切 ∇ , ∇

点	①	②	③	④	⑤	⑥	③ × ⑤		② × ⑥	
	X	X-(定数)	X _{n-1} -X _{n+1}	Y	Y-(定数)	Y _{n-1} -Y _{n+1}	+	-	+	-
∇ 8	^{-153,} 945.991 ✓	^{-153,940-} 5.991 ✓	+1.669 ✓	^{-34,} 306.440 ✓	^{-34,300-} 6.440 ✓	-1.102 ✓			10.748 360	6.602 082
∇ 9	947.092 ✓	7.092 ✓	-0.568 ✓	308.109 ✓	8.109 ✓	+2.771 ✓	4.605 912			19.651 932
	945.423 ✓	5.423 ✓	-1.101 ✓	309.211 ✓	9.211 ✓	-1.669 ✓	10.141 311			9.050 987
							14.747 223	10.748 360	15.653 069	19.651 932
							3.998 863 ✓			3.998 863 ✓
									$\times \frac{1}{2} = 1.999 4315$ ✓	
									<u>2.00</u> ✓	
∇ 13	^{-153,} 907.421 ✓	^{-153,900-} 7.421 ✓	+1.669 ✓	^{-34,} 331.900 ✓	^{-34,330-} 1.900 ✓	-1.102 ✓			3.171 100	8.177 942
12	910.199 ✓	10.199 ✓	+1.109 ✓	332.480 ✓	2.480 ✓	+1.682 ✓	2.750 320			17.154 718
∇	908.530 ✓	8.530 ✓	-2.778 ✓	333.582 ✓	3.582 ✓	-0.580 ✓	9.950 796			4.947 400
							9.950 796	5.921 420	13.125 342	17.154 718
							4.029 376 ✓			4.029 376 ✓
									$\times \frac{1}{2} = 2.014 688$ ✓	
									<u>2.01</u> ✓	

計年月日	50 6 27	計算者	檢査者
------	---------------	-----	-----

B.NO. 22

各筆面積計算書

地番	算式	隅切	地積	摘要
1	保留地 22-3号		167.95	✓
2	309-8		561.69	✓
3	保留地 22-2号		260.72	✓
4	336-1B		119.38	✓
5	312-1A		294.44	✓
6	保留地 22-1号		167.57	✓
		合計	1,571.75	✓
		全体	1,571.78	✓
		差	-0.03	
	保留地面積	3筆		596.24 ^{m²} ✓
	宅地面積	3筆		975.51 ✓