

面積計算書

工
区

ブ
ロ
ック

13

計
算
者



精
算
者



備
考

全体

点	①	②	③	④	⑤	⑥	③	×	⑤	②	×	⑥
	X	X-(定数)	X _{n-1} -X _{n+1}	Y	Y-(定数)	Y _{n-1} -Y _{n+1}	+		-	+		-
I	747.008	47.008	+ 15.972	416.020	116.020	- 12.253			1253.071440	575.989024		
II	764.562	64.562	+ 34.711	409.456	109.456	- 13.054			2797.227216	842.792348		
III	781.719	81.719	+ 30.631	402.966	102.966	- 12.251			2153.951546	1.001.132469		
IV	795.193	95.193	+ 18.940	397.205	97.205	- 8.145			1241.062700	775.346985		
V	800.659	100.659	+ 21.684	394.821	94.821	- 9.484			2056.092564	954.649956		
VI	816.877	116.877	+ 41.718	387.721	87.721	+ 50.374			2659.544672			5287.561998
VII	842.377	142.377	+ 6.918	445.195	145.195	+ 69.949			1.004.459010			9.959.128.779
VIII	823.795	123.795	- 46.644	457.670	157.670	- 47.299	2354.259420			5855.379705		
K.1-1	795.733	95.733	- 41.366	397.896	97.896	- 53.720	4049.565926			5142.776762		
K.1-2	782.429	82.429	- 47.143	403.950	103.950	+ 23.813	4900.514250					1962.281727
K.1-3	768.590	48.590	- 35.421	421.709	121.709	+ 12.070	4311.054489					586.481300
							20615.494755		17267.515154	15.148.074247		18.296.053840
				陽間 I, VI, VII			2247.979601					2247.979601
			1623.98	(4484.450 + 4.423)					Y ₂ = 1.623.9892005			

画地計算

面地略図

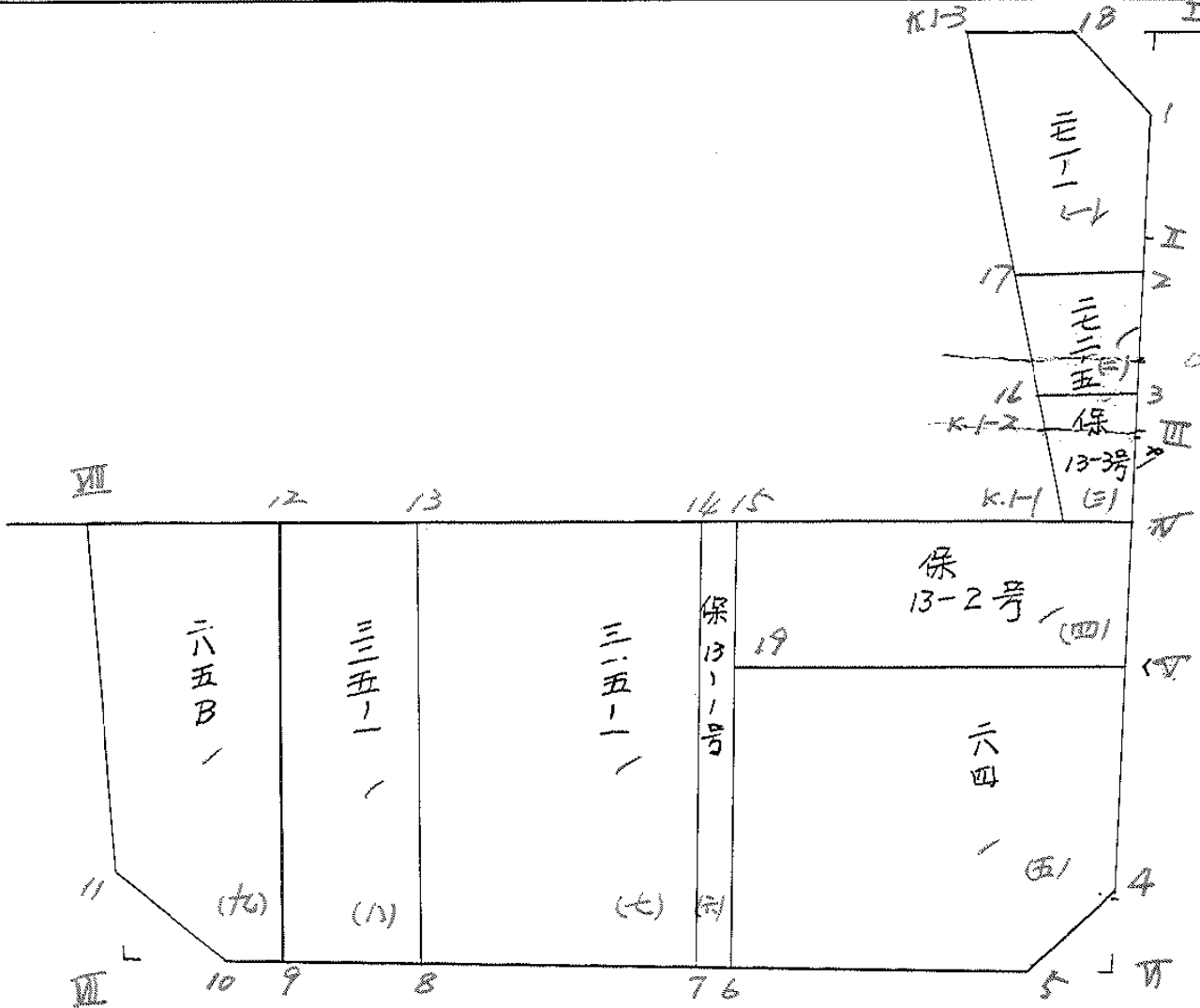
工区

ブロック

13

記入者

点検者



面積計算書						工区	フ ロ ック	13	計 算 者	精 算 者	備 考	⑤ 保13-3号	④ 保13-2号
点	①	②	③	④	⑤	⑥	③ × ⑤		② × ⑥				
	X	X-(定数)	X _{n-1} -X _{n+1}	Y	Y-(定数)	Y _{n-1} -Y _{n+1}	+	-	+	-			
(三) 3	778.199	78.198	2.877	404.298	104.298	2.867							
Ⅲ	781.719	81.719	16.995	402.966	102.966	7.093							
Ⅳ	795.193	95.193	14.014	397.205	97.205	5.070							
K.1-1	795.733	95.733	12.764	397.896	97.896	6.745							
K.1-2	782.429	82.429	16.891	403.950	103.950	7.937							
16	778.842	78.842	4.231	405.833	105.833	0.348							
(四) Ⅶ	795.193	95.193	4.926	397.205	97.205	3.075							
Ⅴ	800.659	100.659	14.704	394.821	94.821	18.376							
19	809.897	109.897	4.386	415.580	115.580	22.909							
15	805.045	105.045	14.164	417.730	117.730	17.685							
K.1-1	795.733	95.733	9.852	397.896	97.896	20.525							

計算

$\frac{1}{2} = 20.4700155$

$\frac{1}{2} = 125.990576$

面積計算書						工区	プロック	13	計算者	縮算者	備考 (ア) 204 (イ) 保13-1号
点	①	②	③	④	⑤	⑥	③ × ⑤		② × ⑥		
	X	X-(定数)	X _{n-1} -X _{n+1}	Y	Y-(定数)	Y _{n-1} -Y _{n+1}	+	-	+	-	
(イ) 3	⁻¹⁵³ 800.659	^{-153.800} 0.659	+ 4.232	⁻³⁴ 394.821	^{-34.300} 94.821	- 6.656			401.282472	17.566304	
4	814.129	14.129	+ 17.405	388.924	88.924	- 4.358			1.550.389940	61.574182	
5	818.094	18.094	+ 11.931	390.463	90.463	+ 19.494			1.079.314953	252.720436	
6	826.060	26.060	- 8.197	408.418	108.418	+ 25.117	888.702346			654.549220	
19	809.897	9.897	- 25.401	415.580	115.580	- 13.597	2925.847580			134.569509	
							2.824.549926	2030.986465	213.709995	1007.273456	
							793563461			793.563461	
									1/2 = 396.7817305		
(イ) 15	⁻¹⁵³ 805.045	^{-153.800} 5.045	+ 20.480	⁻³⁴ 417.730	^{-34.400} 17.730	- 10.453			263.110400	52795985	
6	826.060	26.060	+ 21.526	408.418	8.418	- 8.160			181.205868	212649600	
7	826.571	26.571	- 20.480	409.570	9.570	+ 10.453	195.998600			277.746663	
14	805.580	5.580	- 21.526	418.871	18.871	+ 8.160	406.21746			45.532800	
							602.210746	544.316268	265.384985	323.279463	
							57.894478			57.894478	
									1/2 = 28947237		

面積計算書						工区	ブロック	13	計算者	精算者	備考	(土) 315-1	(水) 325-1
点	①	②	③	④	⑤	⑥	③ × ⑤		② × ⑥				
	X	X-(定数)	X _{n-1} -X _{n+1}	Y	Y-(定数)	Y _{n-1} -Y _{n+1}	+	-	+	-			
(k) 14	-153. 805.580	-153.800 5.580	+ 13.299	-34. 418.871	-34.400 19.871	- 25.685					250965429	143.322300	
7	826.571	26.571	+ 28.326	409.570	9.570	+ 7.232					271.079820		192.161472
8	833.906	33.906	- 13.299	426.103	26.103	+ 25.685	347.143797						870.875610
13	813.272	13.272	- 28.326	435.255	35.255	- 7.232	998633130					95983104	
							1345.776927	522045249	239.305404	1063.037082			
							823.721678				823.721678		
											1/2 = 411.865829		
(ii) 13	-153. 813.272	-153.800 13.272	+ 14.215	-34. 435.255	-34.400 35.255	- 22.825					501.49825	302933400	
8	833.906	33.906	+ 26.758	426.103	26.103	+ 4.649					698.464074		157.628994
9	840.030	40.030	- 14.215	439.904	39.904	- 22.825	567.235360						913684750
12	819.691	19.691	+ 26.758	448.928	48.928	- 4.649	1209.215424					91.542459	
							1876.450784	1199.613899	394.476859	1071.213744			
							676.826885				676.826885		
											1/2 = 338.4184425		

面積計算書		工区	ブロック	13	計算者	精算者	備考	(H) 285B		
点	①	②	③	④	⑤	⑥	③ × ⑤	② × ⑥		
	X	X-(定数)	X _{n-1} -X _{n+1}	Y	Y-(定数)	Y _{n-1} -Y _{n+1}	+	-		
(*) 12	-153. 819.691	-153.800- 19.691	+ 16.235	-34. 449.928	-34.400- 49.928	17.766-		794.346080	349.830306-	
9	840.030	40.030	+ 21.469	439.904	39.904	- 6.475		856.698976	259.196250	
10	841.160	41.160	- 0.111	442.453	42.453	+ 6.963	6.113232		296.597080-	
11	839.886	39.886	- 17.365	446.867	46.867	+ 15.217	913.945455		606.945262	
III	823.795	23.795	- 20.195	457.670	57.670	A 2.061	1164.645650		49.041495-	
							1984.604337	1651.045056	609.024556	942.583837
							333.559291			333.559291
							x 1/2 =	166.7796405		

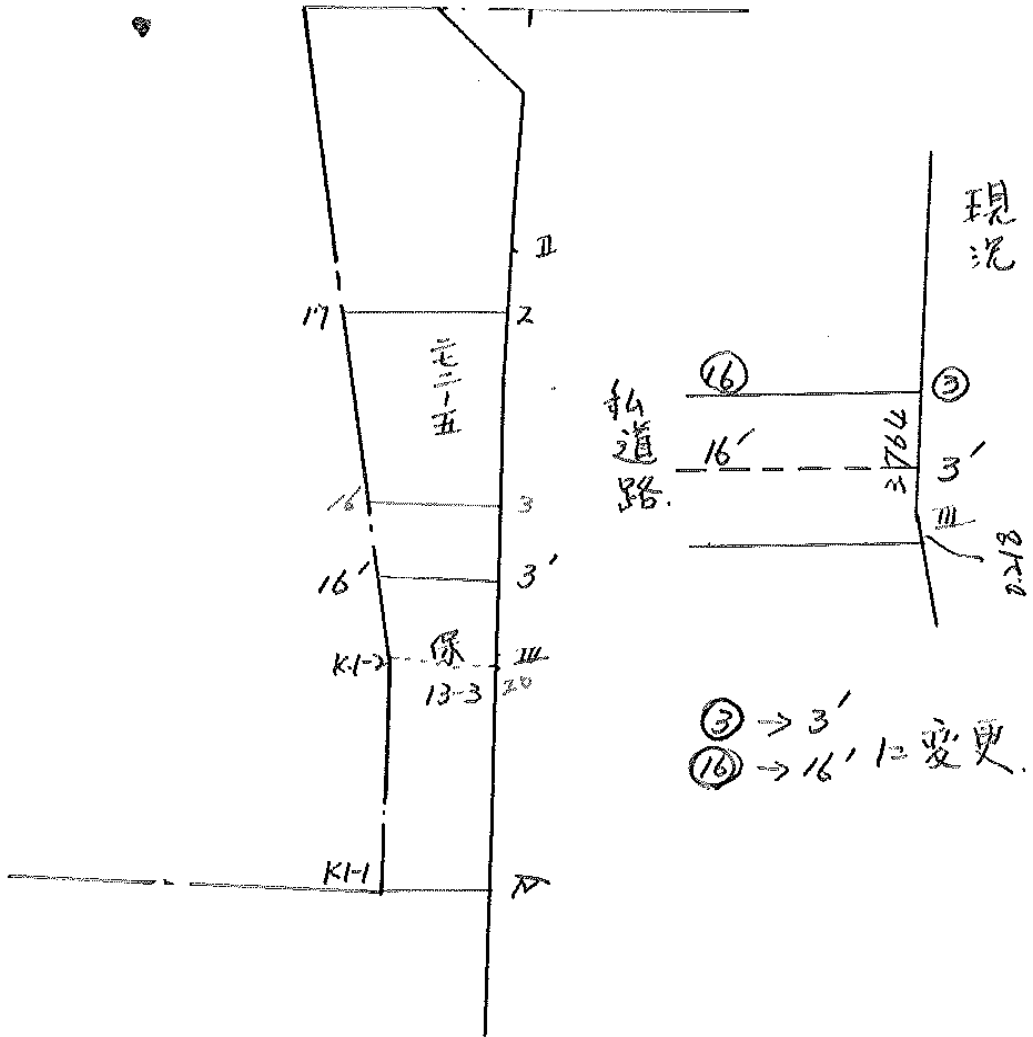
面積計算書

工区
ブロック 13
計算者
精算者
備考 陽物 I, VI, VII

点	①	②	③	④	⑤	⑥	③ × ⑤		② × ⑥	
	X	X - (定数)	X _{n-1} - X _{n+1}	Y	Y - (定数)	Y _{n-1} - Y _{n+1}	+	-	+	-
I	-153. 747.008	-153.740. 7.008	+ 2.006-	-34.416.020 34.410-	6.020	- 3.941-		12.076120	27.618528-	
1	749.818	9.818	+ 0.804-	414.969	4.969	+ 2.890-		3.995076-		28.374020-
18	747.812	7.812	- 2.810-	418.910	8.910	+ 1.051-	25.037100-			8.210412-
							25.037100-	16.071196	27.618528-	36.594432-
					4.48		8.965904-			8.965904-
							× 1/2 = 4.482952			
4	-153. 814.129	-153.810. 4.129	- 1.217-	-34. 388.924	- 34.380. 8.924	- 2.742-	10.860508-		11.321718-	
VI	816.877	6.877	+ 3.965-	387.721	7.721	+ 1.539-		30.613765-		10.593703-
5	818.094	8.094	- 2.748-	390.463	10.463	+ 1.203-	28.752324-			9.787092-
							39.612832	30.613765-	11.321718-	20.320785-
					4.50		8.999067-			8.999067-
							× 1/2 = 4.4995335			
10	-153. 841.160	-153.830. 11.160	+ 2.491-	-34. 442.453	- 34.440. 2.453	- 1.672-		6.110423-	18.659520-	
VII	842.377	12.377	- 1.274-	445.195	5.195	+ 4.414-	6.618130-			54.632078-
11	839.986	9.986	- 1.217-	446.867	6.867	- 2.742-	8.357139-		27.107412-	
							14.975569	6.110423-	165.766932	54.632078
					4.43		8.865146-			8.865146-

× 1/2 = 4.432573- 三和測量建設株式会社

BN0.13



街区略図

工区

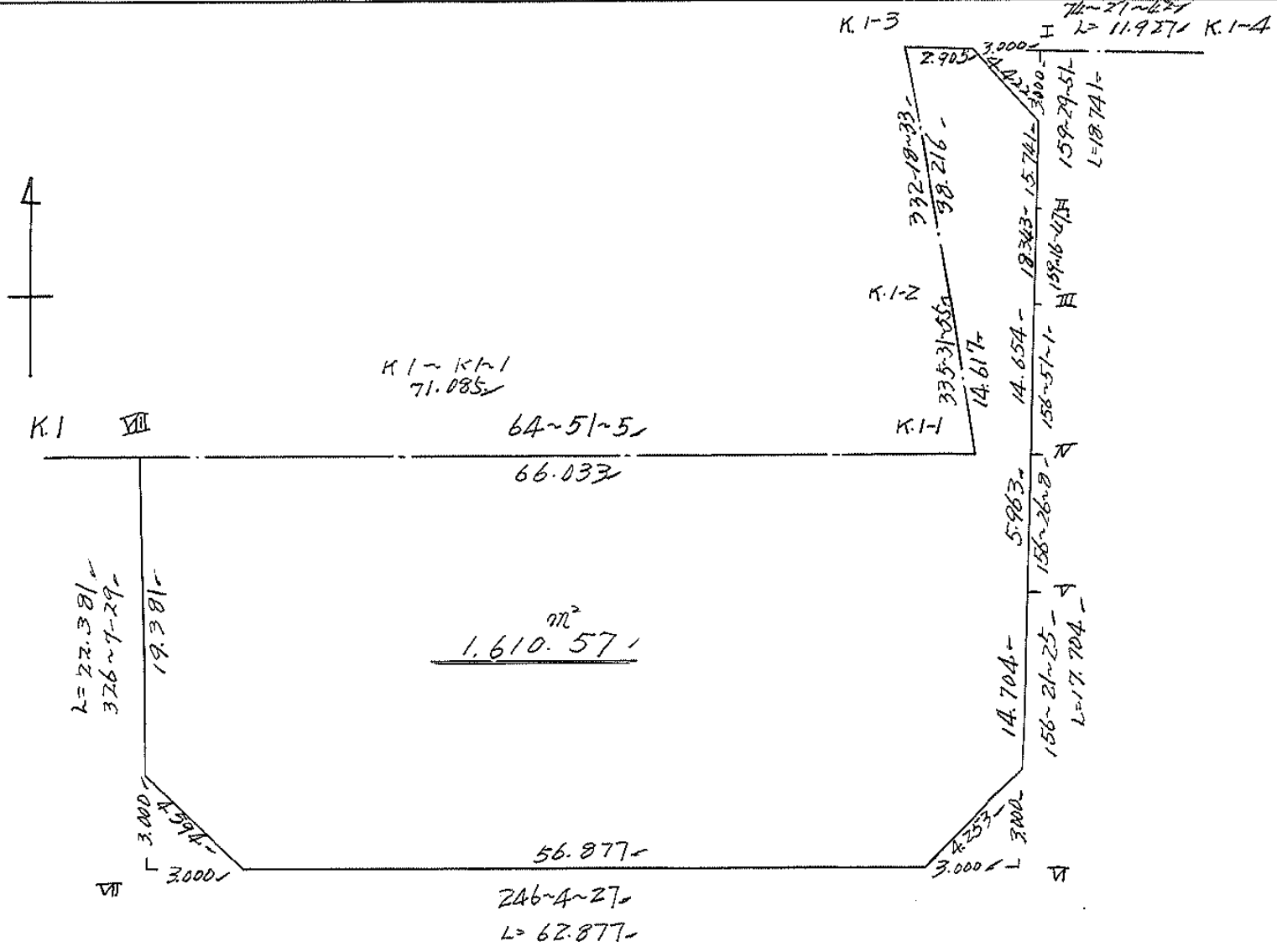
ブロック

13

記入者



点検者



面積計算書

工
区

ブ
ロ
ック

13

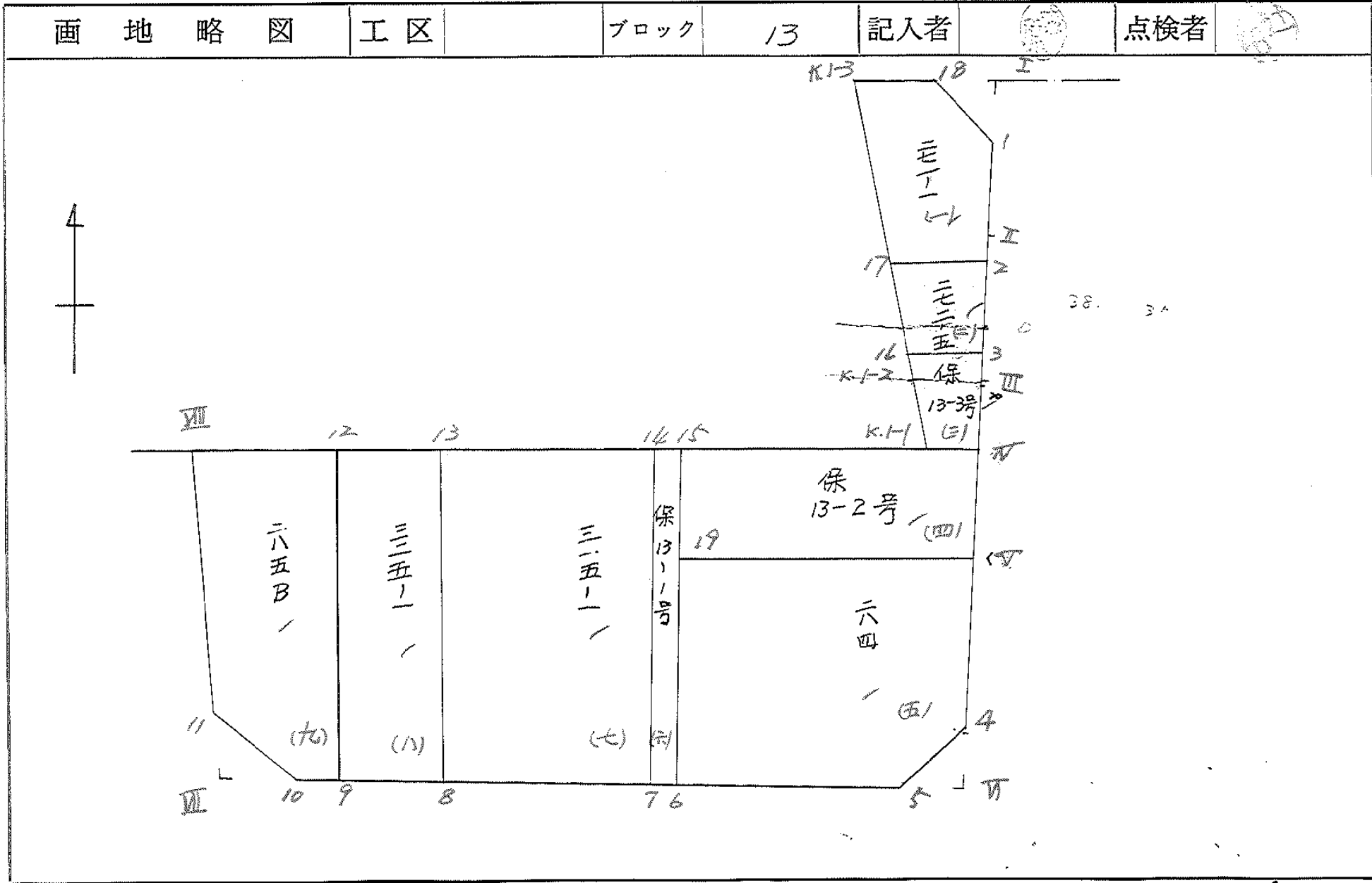
計
算
者

精
算
者

備
考

全体

点	①	②	③	④	⑤	⑥	③	×	⑤	②	×	⑥
	X	X-(定数)	X _{n-1} -X _{n+1}	Y	Y-(定数)	Y _{n-1} -Y _{n+1}	+		-	+		-
I	747.008	47.008	+ 15.972	416.020	116.020	- 12.253			1853.071440	575.989024		
II	764.562	64.562	+ 34.711	409.456	109.456	- 13.054			3799.327216	843.792348		
III	781.719	81.719	+ 30.631	402.966	102.966	- 12.251			3153.951546	1.001.132469		
IV	795.193	95.193	+ 18.940	397.205	97.205	- 8.145			1841.062700	775.346985		
V	800.659	100.659	+ 21.684	394.821	94.821	- 9.484			2056.098564	954.649956		
VI	816.877	116.877	+ 41.718	387.721	87.721	+ 50.374			3659.544678			5287.561998
VII	842.377	142.377	+ 6.918	445.195	145.195	+ 69.949			1.004.459010			9.959.128.773
VIII	823.795	123.795	- 46.644	457.670	157.670	- 47.299	2354.259420			5855.379705		
K.1-1	795.733	95.733	- 41.366	397.896	97.896	- 53.720	4049.565926			5142.776760		
K.1-2	782.429	82.429	- 47.143	403.950	103.950	+ 23.813	4900.514250					1962.281777
K.1-3	768.590	48.590	- 35.421	421.709	121.709	+ 12.070	4311.054489					586.481300
							20615.494755		17267.515154	15.148.074247		18.296.053840
				陽間 I, VI, VII			3247.979601					3247.979601
			1623.98	(4484.450 + 4.43) =	1610.57				Y ₂ = 1.623.9892005			



面積計算書

工区

ブロック

13

計算者



精算者



備考

(-) 271-1
(=) 272-5

点	①	②	③	④	⑤	⑥	③ × ⑤		② × ⑥	
	X	X-(定数)	X _{n-1} -X _{n+1}	Y	Y-(定数)	Y _{n-1} -Y _{n+1}	+	-	+	-
(-) 18	⁻¹⁵³ 747.812	-153.740 7.812	+ 1.228	⁻³⁴ 418.910	-34.400 18.910	- 6.740		23.221480		52.652880
I 1	749.818	9.818	+ 16.750	414.969	14.969	- 9.454		250.720750		92.819372
II 2	764.562	24.562	+ 15.171	409.456	9.456	- 5.675		143.456976		129.389250
2	764.989	24.989	+ 1.822	409.294	9.294	+ 2.914		16.932662		72.817946
17	766.384	26.384	- 16.399	412.370	12.370	* 12.415	202.955630			227.557360
K.1-3	748.590	8.590	18.572	421.709	21.709	* 6.540	403.179548			56.178600
							606.035178	434.342874	284.861602	456.553906
							171.692304			171.692304
										1/2 = 85.846152
(-) 2	⁻¹⁵³ 764.989	-153.760 2.989	+ 11.814	⁻³⁴ 409.294	-34.400 9.294	- 8.072		109.799316		40.271208
3	778.198	18.198	+ 13.853	404.298	4.298	- 3.461		59.540194		62.983272
16	778.842	18.842	- 11.814	405.833	5.833	+ 8.072	68.911062			152.092624
17	766.384	6.384	- 13.853	412.370	12.370	+ 3.461	171.361610			22.095024
							240.272672	169.339570	102.254486	174.187648
							70.933162			70.933162
										1/2 = 35.466581

面積計算書						工区	フ ロ ツ ク	13	計 算 者	精 算 者	備 考	⑤ 保13-3号	④ 保13-2号
点	①	②	③	④	⑤	⑥	③	×	⑤	②	×	⑥	
	X	X-(定数)	X _{n-1} -X _{n+1}	Y	Y-(定数)	Y _{n-1} -Y _{n+1}	+		-	+		-	
(三) 3	778.199	78.199	+ 2.877	404.298	104.298	- 2.867			300.065346	224.193666			
Ⅲ	781.719	81.719	+ 16.995	402.966	102.966	- 7.093			1.749.907170	579.632867			
Ⅳ	795.193	95.193	+ 14.014	397.205	97.205	- 5.070			1.262.230870	482.628510			
K.1-1	795.733	95.733	- 12.764	397.896	97.896	+ 6.745	1.249.524544					645.719085	
K.1-2	782.429	82.429	- 16.891	403.950	103.950	+ 7.937	1.755.819450					654.238973	
16	778.842	78.842	4.231	405.833	105.833	+ 0.348	447.779423					27.437016	
									2.453.142417	2.412.202386	1.286.455043	1.327.395074	
									40.940031			40.940031	
									$\frac{1}{2} = 20.4700155$				
(四) Ⅶ	795.193	95.193	+ 4.926	397.205	97.205	- 3.075			478.831830	292.718475			
Ⅷ	800.659	100.659	+ 14.704	394.821	94.821	+ 18.376			1.394.247984			1.249.709784	
19	809.897	109.897	+ 4.386	415.580	115.580	+ 22.909			506.938266			2.517.630373	
15	805.045	105.045	- 14.164	417.730	117.730	- 17.685	1167.527720					1857.720825	
K.1-1	795.733	95.733	- 9.852	397.896	97.896	- 20.525	964.471392					1.964.919825	
									2.631.999112	2.380.018082	9.115.259125	4.367.340157	
									2.51.981032			2.51.981032	
									$\frac{1}{2} = 125.990576$				

面積計算書						工区	プロック	13	計算者	縮算者	備考 (ア) 204 (イ) 保13-1号
点	①	②	③	④	⑤	⑥ × ⑤		② × ⑥			
	X	X-(定数)	X _{n-1} -X _{n+1}	Y	Y-(定数)	Y _{n-1} -Y _{n+1}	+	-	+	-	
(イ) 3	⁻¹⁵³ 800.659	^{-153.800} 0.659	+ 4.232	⁻³⁴ 394.821	^{-34.300} 94.821	- 26.656			401.282472	17.566304	
4	814.129	14.129	+ 17.405	388.924	88.924	- 4.358			1,550.389940	61,574.182	
5	818.094	18.094	+ 11.931	390.463	90.463	+ 19.494			1,079.314953	252.720436	
6	826.060	26.060	- 8.197	408.418	108.418	+ 25.117	888.702346			654.549220	
19	809.897	9.897	- 25.401	415.580	115.580	- 13.597	2925.847580			134.569509	
							2,824.549926	2030.986465	213,709995	1007.273456	
							793563461			793.563461	
									1/2 = 396.7817305		
(イ) 15	⁻¹⁵³ 805.045	^{-153.800} 5.045	+ 20.480	⁻³⁴ 417.730	^{-34.400} 17.730	- 10.453			263,110400	52,795,985	
6	826.060	26.060	+ 21.526	408.418	8.418	- 8.160			181,205,868	212,649,600	
7	826.571	26.571	- 20.480	409.570	9.570	+ 10.453	195,998,600			277,746,663	
14	805.580	5.580	- 21.526	418.871	18.871	+ 8.160	406,217,466			45,532,800	
							602,210,746	544,316,268	265,384,985	323,279,463	
							57,894,478			57,894,478	
									1/2 = 289,47237		

面積計算書						工区	ブロック	13	計算者	精算者	備考	(土) 315-1	(水) 325-1
点	①	②	③	④	⑤	⑥	③ × ⑤		② × ⑥				
	X	X-(定数)	Xn-1-Xn+1	Y	Y-(定数)	Yn-1-Yn+1	+	-	+	-			
(k) 14	-153. 805.580	-153.800 5.580	+ 13.299	-34. 418.871	-34.400 19.871	- 25.685					250965429	143.322300	
7	826.571	26.571	+ 28.326	409.570	9.570	+ 7.232					271.079820		192.161472
8	833.906	33.906	- 13.299	426.103	26.103	+ 25.685	347.143797						870.875610
13	813.272	13.272	- 28.326	435.255	35.255	- 7.232	998633130					95983104	
							1345.776927	522.045249	239.305404	1063.037082			
							823.721678						823.721678
												1/2 = 411.865829	
(ii) 13	-153. 813.272	-153.800 13.272	+ 14.215	-34. 435.255	-34.400 35.255	- 22.825					501.49825	302933400	
8	833.906	33.906	+ 26.758	426.103	26.103	+ 4.649					698.464074		157.628994
9	840.030	40.030	- 14.215	439.904	39.904	- 22.825	567.235360						913.684750
12	819.691	19.691	+ 26.758	448.928	48.928	- 4.649	1209.215424					91.542459	
							1876.450784	1199.613899	394.476859	1071.213744			
							676.826885						676.826885
												1/2 = 338.4184425	

面積計算書		工区	ブロック	13	計算者	精算者	備考	(H) 285B		
点	①	②	③	④	⑤	⑥	③ × ⑤	② × ⑥		
	X	X-(定数)	X _{n-1} -X _{n+1}	Y	Y-(定数)	Y _{n-1} -Y _{n+1}	+	-		
(*) 12	-153. 819.691	-153.800- 19.691	+ 16.235	-34. 449.928	-34.400- 49.928	17.766-		794.346080	349.830306-	
9	840.030	40.030	+ 21.469	439.904	39.904	- 6.475		856.698976	259.196250	
10	841.160	41.160	- 0.111	442.453	42.453	+ 6.963	6.113232		296.597080-	
11	839.886	39.886	- 17.365	446.867	46.867	+ 15.217	913.945455		606.945262	
III	823.795	23.795	- 20.195	457.670	57.670	A 2.061	1164.645650		49.041495-	
							1984.604337	1651.045056	609.024556	942.583837
							333.559291			333.559291
							x 1/2 =	166.7796405		

面積計算書

工区
ブロック 13
計算者
精算者
備考 陽物 I, VI, VII

点	①	②	③	④	⑤	⑥	③ × ⑤		② × ⑥	
	X	X - (定数)	X _{n-1} - X _{n+1}	Y	Y - (定数)	Y _{n-1} - Y _{n+1}	+	-	+	-
I	-153. 747.008	-153.740. 7.008	+ 2.006-	-34.416.020 34.410-	6.020	- 3.941-		12.076120	27.618528-	
1	749.818	9.818	+ 0.804-	414.969	4.969	+ 2.890-		3.995076-		28.374020-
18	747.812	7.812	- 2.810-	418.910	8.910	+ 1.051-	25.037100-			8.210412-
							25.037100-	16.071196	27.618528-	36.594432-
					4.48		8.965904-			8.965904-
							× 1/2 = 4.482952			
4	-153. 814.129	-153.810. 4.129	- 1.217-	-34. 388.924	- 34.380. 8.924	- 2.742-	10.860508-		11.321718-	
VI	816.877	6.877	+ 3.965-	387.721	7.721	+ 1.539-		30.613765-		10.593703-
5	818.094	8.094	- 2.748-	390.463	10.463	+ 1.203-	28.752324-			9.787092-
							39.612832	30.613765-	11.321718-	20.320785-
					4.50		8.999067-			8.999067-
							× 1/2 = 4.4995335			
10	-153. 841.160	-153.830. 11.160	+ 2.491-	-34. 442.453	- 34.440. 2.453	- 1.672-		6.110423-	18.659520-	
VII	842.377	12.377	- 1.274-	445.195	5.195	+ 4.414-	6.618130-			54.632078-
11	839.986	9.986	- 1.217-	446.867	6.867	- 2.742-	8.357139-		27.107412-	
							14.975569	6.110423-	165.766932	54.632078
					4.43		8.865146-			8.865146-

× 1/2 = 4.432573 三和測量建設株式会社

面積計算書

工
区

ブ
ロ
ック

13

計
算
者

精
算
者

備
考

係 13-3号

点	①	②	③	④	⑤	⑥	③ × ⑤		② × ⑥	
	X	X-(定数)	X _{n-1} -X _{n+1}	Y	Y-(定数)	Y _{n-1} -Y _{n+1}	+	-	+	-
20	781.171	1.171	+12.764	402.858	12.858	-6.745		164.11512	13.244395	
π	795.193	15.193	+13.762	397.205	7.205	-4.962		99.155210	75.387666	
K1-1	795.733	15.733	-12.764	397.896	7.896	+6.745	100.784544			106.119085
K1-2	782.429	2.429	-13.762	403.150	13.150	+4.962	191.979900			12.052698
							292.764444	263.274722	88.682061	118.171783
							29.489722			29.489722
							× 1/2 = 14.744861			

面積計算書

工
区

ブ
ロ
ック

13

計
算
者



精
算
者

備
考

⇒ 272-5

⇒ 保13-3 一軒区画街路

点	①	②	③	④	⑤	⑥	③ × ⑤		② × ⑥	
	X	X - (定数)	X _{n-1} - X _{n+1}	Y	Y - (定数)	Y _{n-1} - Y _{n+1}	+	-	+	-
2	-153, 764.999	-153,760 4.989	13.677	-34, 409.294	-34,400 9.294	8.777			127.114038	43.788453
3'	780.061	20.061	15.647	403.593	3.593	4.403			56.21967	88.328583
16'	780.636	20.636	13.677	404.891	4.891	8.777	66.894207			181.122172
17	766.384	6.384	15.647	412.370	12.370	4.403	193.553390			28.108752
							260.447597	183.333709	132.117036	209.230924
							77.113888			77.113888
							x/2 = 38.556944			
3'	-153, 780.061	-153,780 0.061	1.083	-34, 403.593	-34,390 13.593	1.925			14.721219	0.117425
Ⅲ	781.719	1.719	15.132	402.966	12.966	6.388			196.201512	10.980992
Ⅳ	795.193	15.193	14.014	397.205	7.205	5.070			100.970870	77.028510
K-1	795.733	15.733	12.764	397.896	7.896	6.745	100.784544			106.119085
K-2	782.429	2.429	15.097	403.950	13.950	6.995	210.603150			16.990855
16'	780.636	0.636	2.368	404.891	14.891	0.357	35.261888			0.227052
							346.649582	311.893601	88.353959	123.109940
							34.755981			34.755981
			17.37 - 14.74 = 2.63	(街路7号線)			x/2 = 17.3779905			

計年月日 50.7.7 計算者 検査者

B.NO. 13

各筆面積計算書

地番	算式	隅切	地積	摘要
1	271-1		85.84	
2	272-5	変更	38.55 ① 35.46	35.46 (2)
3	保 13-3号	"	17.37 20.47	① 14.74 20.07 - 14.74 = 5.33 2.63 + 3.07 = 5.72
4	保 13-2号		125.99	5.72 道路
5	284		396.78	
6	保 13-1号		28.94	
7	215-1		411.86	
8	325-1		338.41	
9	285 B		166.77	
		合計	1.610.52	
		全体	1.610.57	
		差	- 0.05	
	保留地面積		2.30 175.40	3筆
	宅地面積		8.21 1,435.12	6筆
				1,510.826
	空地		1,435.12	6筆
	保留地		169.67	3筆
	道7号線		5.72	