

街区略図

工区

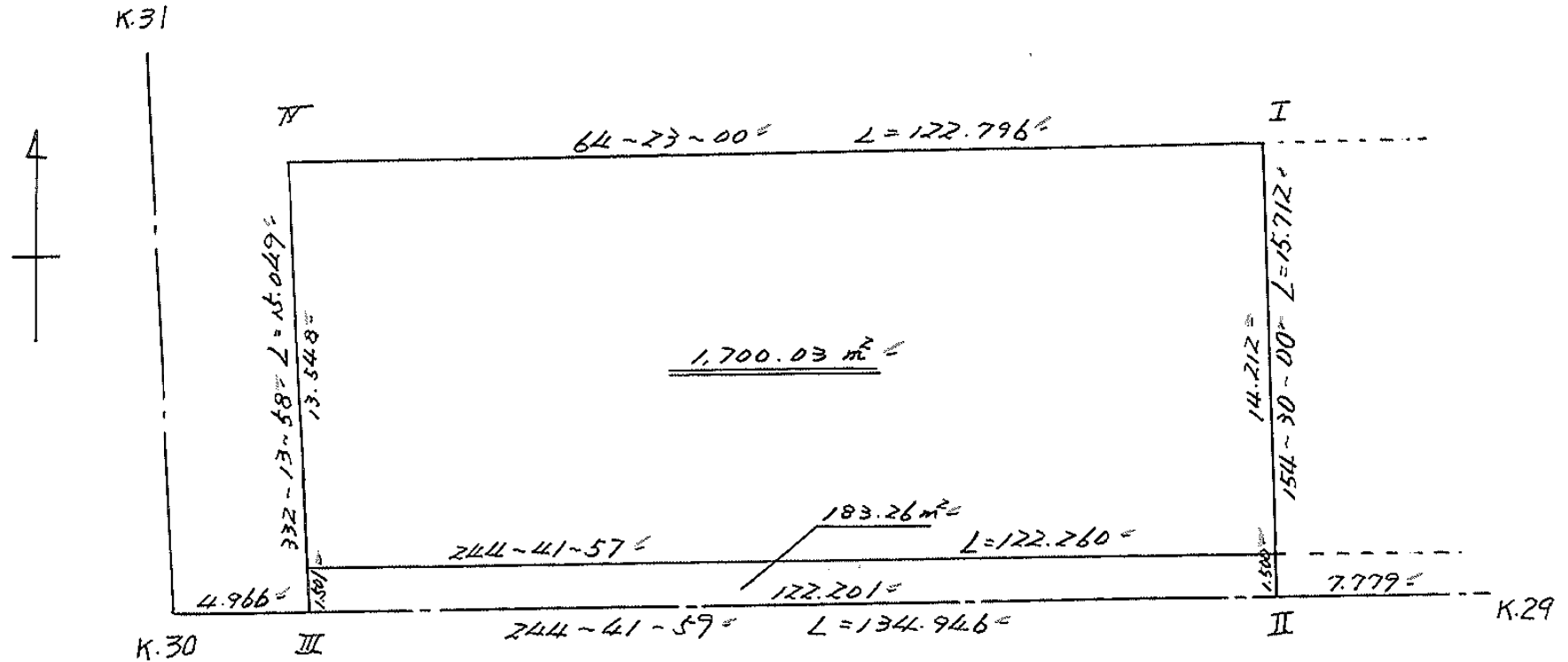
ブロック

5-1

記入者

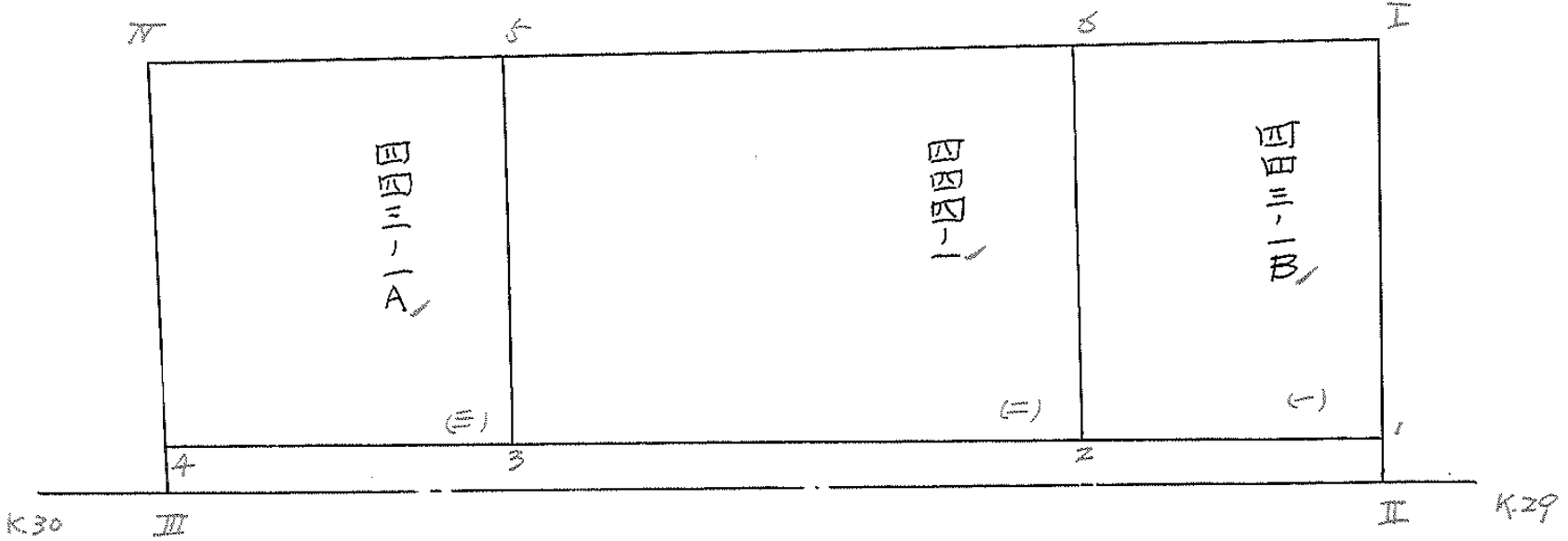
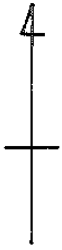


点検者



面地計算

画地略図	工区	ブロック	5-1	記入者	点検者
------	----	------	-----	-----	-----



面積計算書

工区

ブロック

5-1

計算者



精算者

備考

備考

E) 443-1A

水路 4号線 391

(E)

点	①	②	③	④	⑤	⑥	③ × ⑤		② × ⑥	
	X	X - (定数)	X _{n-1} - X _{n+1}	Y	Y - (定数)	Y _{n-1} - Y _{n+1}	+	-	+	-
5	^{-154,} 111.225	^{-154,100-} 11.225	- 0.606	^{-34,} 663.975	^{-34,600-} 63.975	- 32.955	38.768850			369.919875
3	123.590	23.590	+ 24.959	658.072	58.072	+ 20.740		1109.419000		489.256600
4	136.184	36.184	+ 0.606	684.715	84.715	+ 32.955		51.337290		1192.063920
π	124.196	24.196	+ 24.959	691.027	91.027	+ 20.740	2271.942893			501.825040
							2310.711743	1500.756339	871.700915	1681.700320
							809.955405			809.955405
							x 1/2 = 404.9777025			
1	^{-154,} 083.934	^{-154,000-} 83.934	- 50.897	^{-34,} 574.183	^{-34,500-} 74.183	- 111.178	3775.692151			9331.114252
II	085.287	85.287	+ 53.578	573.537	73.537	+ 109.833		3939.965396		9367.327071
III	137.512	137.512	+ 50.897	684.016	184.016	+ 111.178		9365.962352		15288.309136
4	136.184	136.184	- 53.578	684.715	184.715	+ 109.833	9896.660270			16957.697272
							13672.352021	3305.8277392	4289.111524	2465.636207
							366.526683			366.526683
							x 1/2 = 183.2623415			

面積計算書

工区

ブロック

5-1

計算者



精算者



備考

(1) 443-1B

(2) 444-1

点	①	②	③	④	⑤	⑥	③ × ⑤		② × ⑥		
	X	X-(定数)	X _{n-1} -X _{n+1}	Y	Y-(定数)	Y _{n-1} -Y _{n+1}	+	-	+	-	
(1) I	-154. 271.106	-154.000- 71.106	+ 2.599	-34. 590.301	-34.500- 80.301	- 27.452			208.702299	1952.001912	
1	083.934	83.934	+ 22.940	574.183	74.183	+ 15.272			1701.758020		1281.840049
2	094.046	94.046	- 2.599	595.573	95.573	+ 27.452	249.394227				2591.750792
6	081.335	81.335	+ 22.940	601.635	101.635	15.272	2331.506920			1242.148120	
							2579.901127		1910.460319	3194.150022	3863.590840
							669.440908				669.440908
							× K = 334.720404				
(2) 6	-154. 081.335	-154.000- 81.335	- 17.179	-34. 601.635	-34.500- 101.635	- 68.402	1745.989665			5563.476670	
2	094.046	94.046	+ 42.255	595.573	95.573	+ 56.437			4038.437115		5307.674102
3	123.590	123.590	+ 17.179	658.072	158.072	+ 68.402			2715.518888		8453.803180
5	111.225	111.225	+ 42.255	663.975	163.975	56.437	6928.763625			6277.205325	
							8676.751290		6753.956003	11840.68995	13761.477282
							1920.795287				1920.795287
							× K = 960.3974435				

