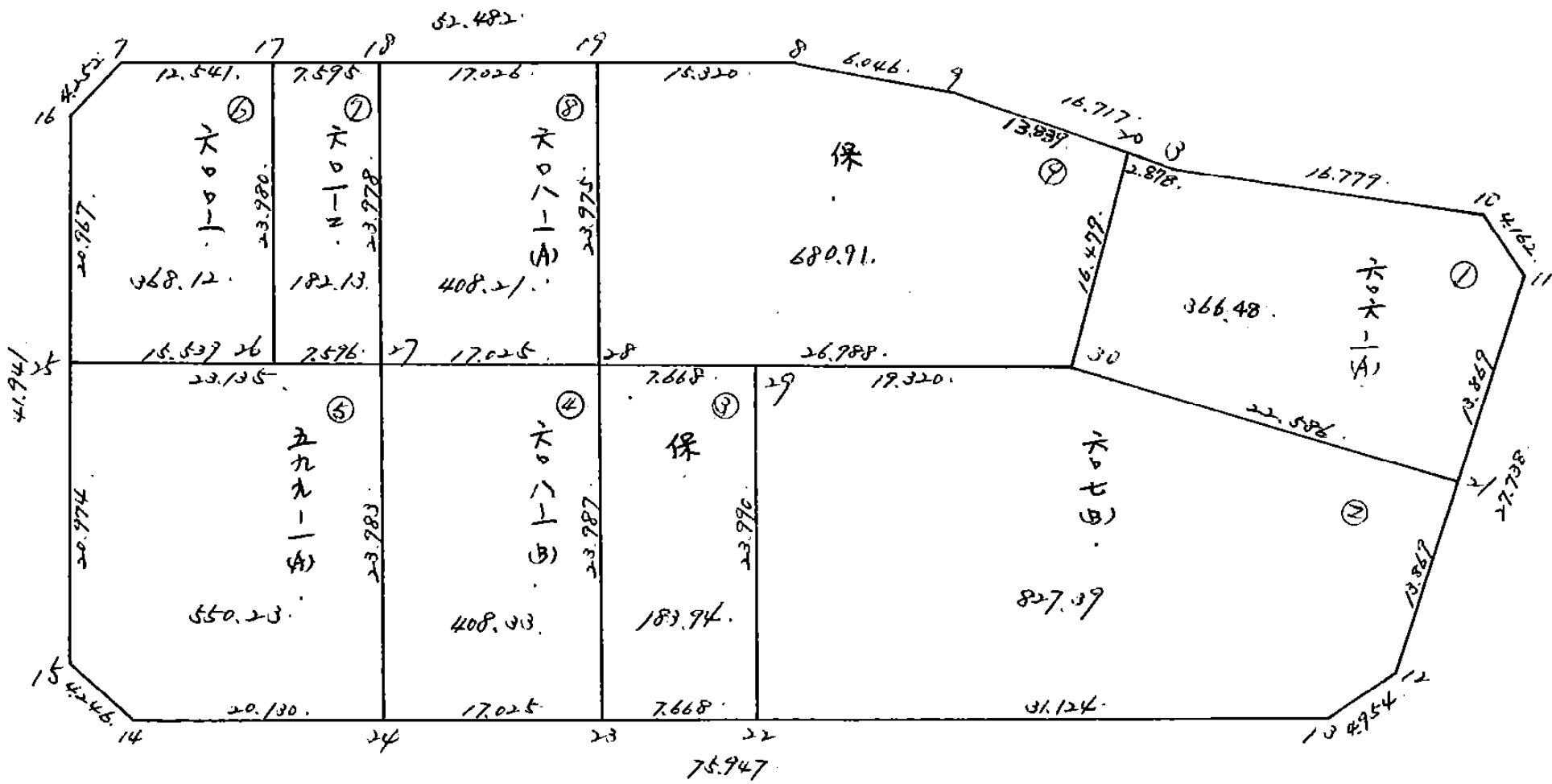


画地原子一览表用纸 (No. 5)

略 図

街区面積 = m²
 換地面積 =



21074 139

5 BLOCK

3975.780078

1 LOT

367.370420

366.487431

2 LOT

827.397362

3 LOT

183.949811

4 LOT

408.332750

5 LOT

550.237006

6 LOT

368.120750

7 LOT

182.137283

8 LOT

408.211191

9 LOT

~~683.036167~~

680.919531

21074

~~3975.792740~~

3975.792705

0.000000

5 BLOCK

順NO.	X	Y	(X-Xc)	(YN-1-Yc)	(XN-1-Xc)	(Y-Yc)
Xc, Yc =	-150300.000	-42500.000				
7	-150379.318	-42657.858				
8	-150358.762	-42609.569	9276.051796	8690.793942		
9	-150357.860	-42603.591	6339.662340	6087.214342		
3	-150360.169	-42587.034	6232.966879	5035.787240		
10	-150358.996	-42570.296	5134.657864	4229.640024		
11	-150361.799	-42567.220	4344.222504	3965.711120		
12	-150389.528	-42566.506	6018.072160	4110.004294		
13	-150393.700	-42569.177	6231.612200	6193.278456		
14	-150423.438	-42639.060	8539.070526	13029.922000		
15	-150421.854	-42643.000	16945.017240	17651.634000		
16	-150383.267	-42659.435	11907.181000	19427.792490		
7	-150379.318	-42657.858	12646.065330	13144.362086		
			93614.579839	101566.139974		
			n ² 分散 =	7951.560155		
			分散 =	3975.780078		

1 LOT

順NO.	X	Y	(X-Xc)	(YN-1-Yc)	(XN-1-Xc)	(Y-Yc)
Xc, Yc =	-150300.000	-42500.000				
20	-150359.807	-42589.627				
3	-150360.169	-42587.034	5392.766963	5205.242438		
10	-150358.996	-42570.296	5134.657864	4229.640024		
11	-150361.799	-42567.220	4344.222504	3965.711120		
21	-150375.663	-42566.863	5086.066860	4132.066537		
30	-150376.244	-42589.441	5897.902572	6767.374383		
20	-150359.807	-42589.627	5349.177537	6333.520985		
			30404.814650	31133.555490		
			n ² 分散 =	728.740840		
			分散 =	364.370420		

2 LOT

順NO.	X	Y	(X-Xc)	(YN-1-Yc)	(XN-1-Xc)	(Y-Yc)
Xc, Yc =	-150300.000	-42500.000				
21	-150375.663	-42566.863				
12	-150389.528	-42566.506	5986.110664	5032.043478		
13	-150393.700	-42569.177	6231.612200	6193.278456		
22	-150405.887	-42597.816	7324.944999	9125.359200		
29	-150383.815	-42607.216	8198.448040	11352.780592		
30	-150376.244	-42589.441	8174.576704	7496.497415		
21	-150375.663	-42566.863	6767.374383	5097.902572		
			42663.066990	44337.861713		
			n ² 分散 =	1654.794723		
			分散 =	827.397362		

3 LOT

PLNO,	X	Y	(X-X ₀) (Y-Y ₀)	(XN-1-X ₀) (Y-Y ₀)
X ₀ , Y ₀ =	-150300.000	-42500.000		
22	-150405.887	-42597.816		
23	-150408.889	-42604.872	10651.086424	11104.581464
28	-150386.820	-42614.271	9104.987040	12442.854719
29	-150383.815	-42607.216	9577.623865	9308.493120
22	-150405.887	-42597.816	11352.780592	8198.448040
			40686.477921	41054.377543
			平均値	367.899622
			最大値	183.949811

4 LOT

PLNO,	X	Y	(X-X ₀) (Y-Y ₀)	(XN-1-X ₀) (Y-Y ₀)
X ₀ , Y ₀ =	-150300.000	-42600.000		
23	-150408.889	-42604.872		
24	-150415.556	-42620.537	562.988832	2236.253393
27	-150393.491	-42629.934	1920.024667	3459.053304
28	-150386.820	-42614.271	2598.869880	1334.210061
23	-150408.889	-42604.872	1553.954919	422.987040
			6635.838298	7452.503798
			平均値	816.665500
			最大値	408.332750

5 LOT

PLNO,	X	Y	(X-X ₀) (Y-Y ₀)	(XN-1-X ₀) (Y-Y ₀)
X ₀ , Y ₀ =	-150300.000	-42600.000		
24	-150415.556	-42620.537		
14	-150423.438	-42639.060	2335.046206	4513.617360
15	-150421.854	-42643.000	4759.617240	5307.834000
25	-150402.557	-42651.219	4409.951000	6241.240026
27	-150393.491	-42629.934	4788.515829	3059.941238
24	-150415.556	-42620.537	3459.053304	1920.024667
			19952.183279	21052.657291
			平均値	1100.474012
			最大値	550.237006

6 LOT

順NO.	X	Y	(X-X ₀) (YN-1-Y ₀)	(XN-1-X ₀) (Y-Y ₀)
X ₀ , Y ₀ =	-150300.000	-42600.000		
25	-150402.557	-42651.219		
16	-150383.267	-42659.435	4264.852473	6095.475295
7	-150379.318	-42657.858	4714.265330	4817.662086
17	-150374.406	-42646.319	4304.982348	3673.930442
26	-150396.468	-42636.923	4468.301292	2747.292738
25	-150402.557	-42651.219	3786.712111	4940.994492
			21539.113554	22275.355053
			平均値=	736.241499
			分散=	368.120750

7 LOT

順NO.	X	Y	(X-X ₀) (YN-1-Y ₀)	(XN-1-X ₀) (Y-Y ₀)
X ₀ , Y ₀ =	-150300.000	-42600.000		
17	-150374.406	-42646.319		
18	-150371.431	-42639.331	3308.612489	2926.462386
27	-150393.491	-42629.934	3677.094521	2138.215554
26	-150396.468	-42636.923	2887.673112	3451.968193
17	-150374.406	-42646.319	2747.292738	4468.301292
			12620.672860	12984.977425
			平均値=	364.274565
			分散=	182.137283

8 LOT

順NO.	X	Y	(X-X ₀) (YN-1-Y ₀)	(XN-1-X ₀) (Y-Y ₀)
X ₀ , Y ₀ =	-150300.000	-42600.000		
18	-150371.431	-42639.331		
19	-150364.762	-42628.665	2547.154272	1690.414615
28	-150386.820	-42614.271	2054.595300	924.218502
27	-150393.491	-42629.934	1334.210061	2598.869880
18	-150371.431	-42639.331	2138.215554	3677.094521
			8074.175137	8890.597518
			平均値=	816.422381
			分散=	408.211191

1 LOT

7) NO. X ₀ Y ₀	X	Y	(X-X ₀) (Y _{N-1} -Y ₀)	(X _{N-1} -X ₀) (Y-Y ₀)
	-150300.000	-42500.000		
20	-150359.771	-42589.885		
3	-150360.169	-42587.034	5408.290565	5202.109214
10	-150358.996	-42570.296	5134.657864	4229.640024
11	-150361.799	-42567.220	4344.222504	3965.711120
21	-150375.663	-42566.863	5086.066860	4132.066537
30	-150376.244	-42589.441	5097.902572	6767.374383
20	-150359.771	-42589.885	5345.978011	6853.191940
			30417.118376	31150.093218
			平均のセキ= Xのセキ=	732.974842 366.487421

9 LOT

7) NO. X ₀ Y ₀	X	Y	(X-X ₀) (Y _{N-1} -Y ₀)	(X _{N-1} -X ₀) (Y-Y ₀)
	-150300.000	-42500.000		
19	-150364.762	-42623.665		
8	-150358.762	-42609.569	7266.802730	7095.907578
9	-150357.860	-42603.591	6339.662340	6087.214342
20	-150359.771	-42589.885	6191.737661	5200.746100
30	-150376.244	-42589.441	6853.191940	5345.978011
28	-150386.820	-42614.271	7765.267620	8712.478124
19	-150364.762	-42623.665	7400.418502	10736.595300
			41817.080793	43178.919455
			平均のセキ= Xのセキ=	1361.838662 680.919331