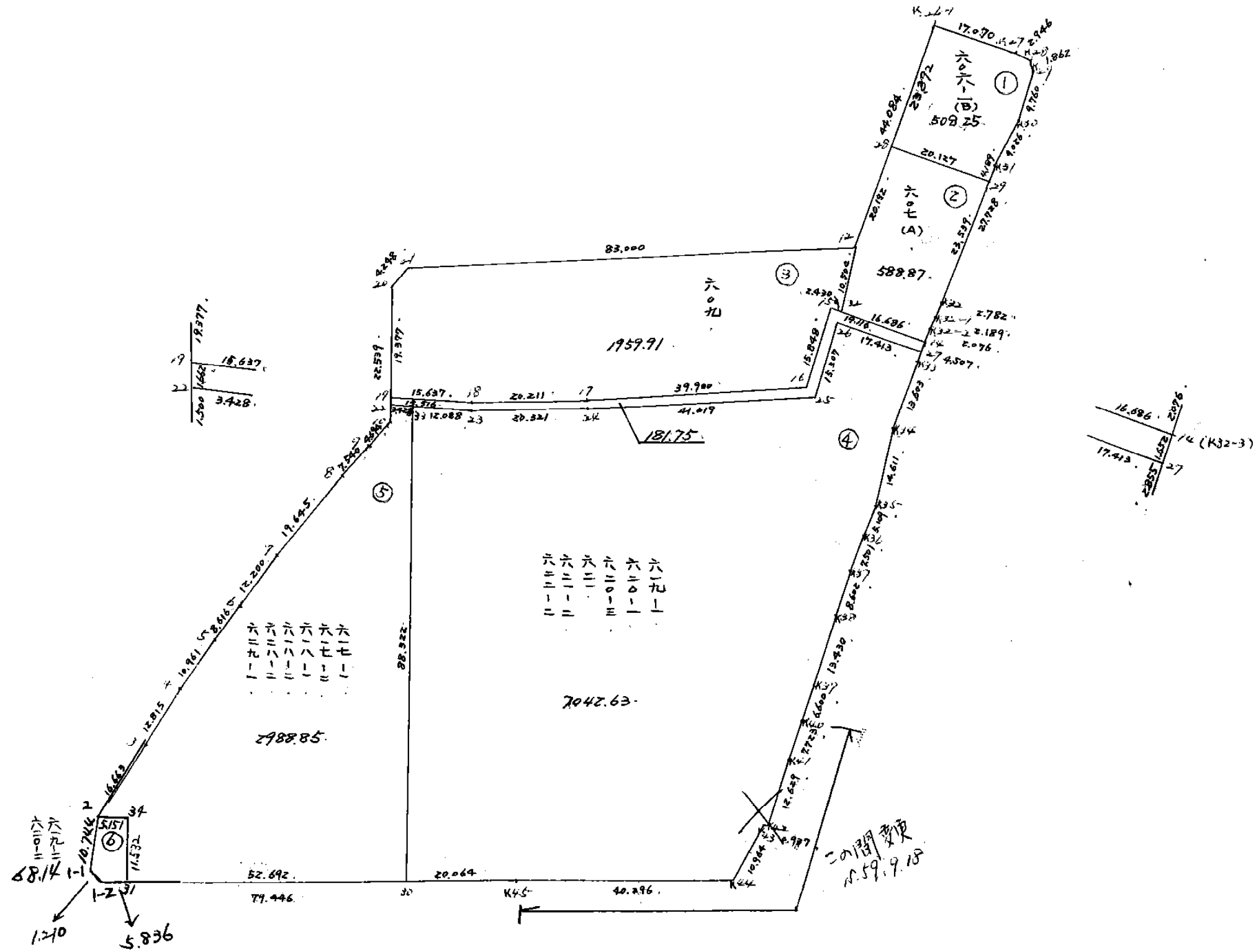


端 又

測量日期：一九五九年九月
 測地面積：五七〇九・二五



メッセージ

シウケイ ヒョウ

6 BLOCK

~~13340.960903~~ ~~13338.823036~~

13338.419786

1 LOT

510.379830 508.257511

2 LOT

588.874433

3 LOT

1959.918467

4 LOT

7042.638258

5 LOT

2988.854807

6 LOT

~~68.561640~~

68.148390

Σ 6 LOT

181.750988

ゴウケイ

13340.970425 13338.856106 0.000000

13338.442350

6 BLOCK

元/NO.	X	Y	(X-X ₀)(Y _{N-1} -Y ₀)	(X _{N-1} -X ₀)(Y-Y ₀)
X ₀ , Y ₀ =	-150300.000	-42500.000		
1	-150554.995	-42650.712		
2	-150543.592	-42653.419	36712.237504	39121.077905
3	-150527.306	-42649.893	34873.059214	36512.735656
4	-150514.828	-42646.973	32201.213404	33407.844738
5	-150504.202	-42644.282	30012.180546	30995.813496
6	-150495.897	-42641.988	28264.410954	28994.233576
7	-150484.229	-42638.423	26158.307252	27116.650431
8	-150465.486	-42632.538	22907.068578	24417.343202
9	-150458.206	-42630.574	20968.306828	21608.168964
10	-150453.647	-42629.457	20062.303378	20480.874142
20	-150432.913	-42638.294	17206.518241	21248.458218
21	-150428.974	-42636.703	17836.330356	18169.605839
12	-150396.456	-42560.338	13185.824568	7782.033212
K26-1	-150352.387	-42561.484	3160.926806	5930.500704
K27	-150351.206	-42544.455	3148.349704	2328.864085
K28	-150351.446	-42541.519	2287.031930	2126.021914
K29	-150352.846	-42540.291	2194.113074	2072.810786
K30	-150362.589	-42539.721	2521.773399	2099.095966
K31	-150371.559	-42540.725	2842.395039	2548.937025
K32	-150399.287	-42540.840	4043.463075	2922.469560
K32-1	-150402.065	-42540.989	4168.334600	4069.674843
K32-2	-150404.249	-42541.135	4273.062261	4198.443775
14 (K32-3)	-150406.294	-42541.493	4372.403690	4325.603757
K33	-150410.800	-42541.600	4597.424400	4421.830400
K34	-150424.400	-42541.300	5175.040000	4576.040000
K35	-150438.900	-42539.500	5736.570000	4913.800000
K36	-150444.000	-42539.200	5688.000000	5444.880000
K37	-150451.500	-42539.300	5938.800000	5659.200000
K38	-150460.100	-42539.100	6291.930000	5923.650000
K39	-150473.500	-42538.200	6783.850000	6115.820000
K40	-150480.100	-42538.200	6879.820000	6627.700000
K41	-150487.800	-42537.600	7173.960000	6771.760000
K42	-150500.422	-42537.191	7535.867200	6984.469800
K43	-150501.182	-42537.739	7482.159762	7563.725858
K44	-150512.082	-42538.924	8003.762598	7830.808168
K45	-150526.645	-42576.496	8821.929980	16223.424672
1	-150554.995	-42650.712	19506.097520	34158.121240
			439014.825861	465692.491932
			平均値=	26677.666071
			標準値=	13338.833036
			***	- 0.41250
				10000.411786

1 LOT

元/NO.	X	Y	(X-X ₀)(Y _{N-1} -Y ₀)	(X _{N-1} -X ₀)(Y-Y ₀)
X ₀ , Y ₀ =	-150300.000	-42500.000		
K26-1	-150352.387	-42561.484		

K27	-150351.206	-42544.455	3148.708146	2317.839245
K28	-150351.446	-42541.519	2287.031930	2126.021914
K29	-150352.846	-42540.291	2194.113074	2072.810786
K30	-150362.589	-42539.721	2521.773399	2099.095966
K31	-150371.559	-42540.725	2842.395039	2548.937025
29	-150375.748	-42540.743	3084.837300	2915.528337
28	-150376.271	-42560.863	3107.509353	4610.250524
K26-I	-150352.139	-42561.491	3173.335957	4689.980061
			22359.704198	23390.463858
			個イノセキ=	1020.759660
			ノセキ=	510.379830

2 LOT

元NO.	X	Y	(X-X ₀) (YN-1-Y ₀)	(XN-1-X ₀) (Y-Y ₀)
X ₀ , Y ₀ =	-150300.000	-42500.000		
29	-150375.748	-42540.743		
K32	-150399.287	-42540.840	4045.250241	3093.548320
K32-I	-150402.065	-42540.989	4168.334600	4069.674843
K322	-150404.249	-42541.135	4273.062261	4198.443775
14	-150406.294	-42541.493	4372.403690	4325.603757
32	-150406.734	-42558.173	4428.713862	6183.440862
12	-150396.456	-42560.338	5611.134888	6440.116092
28	-150376.271	-42560.863	4602.039598	5870.601528
29	-150375.748	-42540.743	4610.250524	3107.509353
			36111.189664	37288.938530
			個イノセキ=	1177.748866
			ノセキ=	588.874433

3 LOT

元NO.	X	Y	(X-X ₀) (YN-1-Y ₀)	(XN-1-X ₀) (Y-Y ₀)
X ₀ , Y ₀ =	-150300.000	-42500.000		
12	-150396.456	-42560.338		
32	-150406.734	-42558.173	6440.116092	5611.134888
15	-150406.798	-42560.603	6212.760054	6468.400602
16	-150422.645	-42560.461	7432.654935	6457.113878
17	-150438.939	-42596.882	8400.390879	11882.092890
18	-150446.320	-42615.697	14175.774240	16074.825483
19	-150450.738	-42630.697	17439.934386	19123.585040
20	-150432.913	-42638.294	17371.330361	20846.160972
21	-150428.974	-42636.703	17836.330356	18169.605839
12	-150396.456	-42560.338	13185.824568	7782.033212
			108495.115871	112414.952804
			個イノセキ=	3919.836933
			ノセキ=	1959.918467

メンセキケイサン

K27	-150351.206	-42544.455	3148.349704	2328.864085
K28	-150351.446	-42541.519	2287.031930	2126.021914
K29	-150352.846	-42540.291	2194.113074	2072.810786
K30	-150362.589	-42539.721	2521.773399	2099.095966
K31	-150371.559	-42540.725	2842.395039	2548.937025
29	-150375.748	-42540.743	3084.837300	2915.528337
28	-150376.271	-42560.863	3107.509353	4610.250524
K26-1	-150352.387	-42561.484	3188.429981	4689.446164

22374.439780 23390.954801

ハイメンセキ= 1016.515021

メンセキ= 508.257511

4 LOT

元NO. X ₀ , Y ₀ =	X	Y	(X-X ₀) (YN-1-Y ₀)	(XN-1-X ₀) (Y-Y ₀)
27	-150407.946	-42541.532		
K33	-150410.800	-42541.600	448.545600	330.553600
K34	-150424.400	-42541.300	1015.040000	446.040000
K35	-150438.900	-42539.500	1606.570000	963.800000
K36	-150444.000	-42539.200	1738.000000	1524.880000
K37	-150451.500	-42539.300	2018.800000	1729.200000
K38	-150460.100	-42539.100	2361.930000	2013.650000
K39	-150473.500	-42538.200	2873.850000	2295.820000
K40	-150480.100	-42538.200	3059.820000	2807.700000
K41	-150487.800	-42537.600	3353.960000	3011.760000
K42	-150500.422	-42537.191	3775.867200	3265.369800
K43	-150501.182	-42537.739	3763.059762	3789.825858
K44	-150512.082	-42538.924	4229.862598	3938.408168
K45	-150526.645	-42576.496	4929.529980	8573.824672
30	-150533.805	-42595.239	10235.547280	12061.543155
33	-150451.298	-42626.757	4885.570222	16960.720385
23	-150447.883	-42615.161	6069.505431	5907.528978
24	-150440.461	-42596.244	4659.529221	4608.451452
25	-150423.710	-42558.801	2281.945240	2379.147261
26	-150408.404	-42558.939	494.163604	1397.443690
27	-150407.946	-42541.532	468.329294	349.034928
			64269.425432	78354.701947
			平均点=	14085.276515
			点=	7042.638258

5 LOT

元NO. X ₀ , Y ₀ =	X	Y	(X-X ₀) (YN-1-Y ₀)	(XN-1-X ₀) (Y-Y ₀)
30	-150533.805	-42595.239		
31	-150552.608	-42644.462	14534.233312	19329.737910
34	-150541.835	-42648.577	20489.767770	22674.038816
2	-150543.592	-42653.419	21334.468584	21760.183865
3	-150527.306	-42649.893	19531.159214	21523.435656
4	-150514.828	-42646.973	17211.913404	18710.544738
5	-150504.202	-42644.282	15314.880546	16567.613496
6	-150495.897	-42641.988	13836.210954	14795.433576
7	-150484.229	-42638.423	11959.507252	13274.350431
8	-150465.486	-42632.538	9064.768578	11163.543202
9	-150458.206	-42630.574	7714.506828	8550.768964
10	-150453.647	-42629.457	7004.903378	7535.174142
22	-150452.267	-42630.045	6766.329019	6976.524115
33	-150451.298	-42626.757	6671.048410	6625.208119
30	-150533.805	-42595.239	16960.720385	4885.570222
			188394.417634	194372.127252
			平均点=	5977.709618
			点=	2988.854809

6 LOT

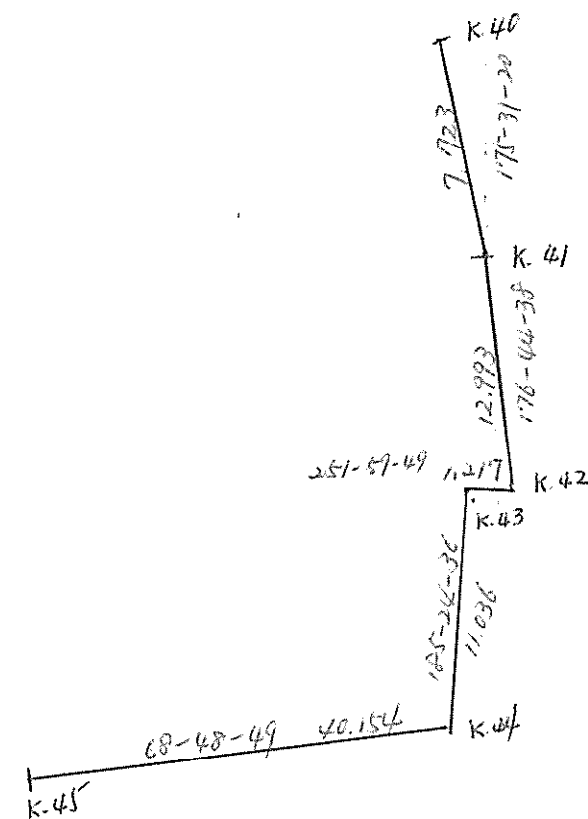
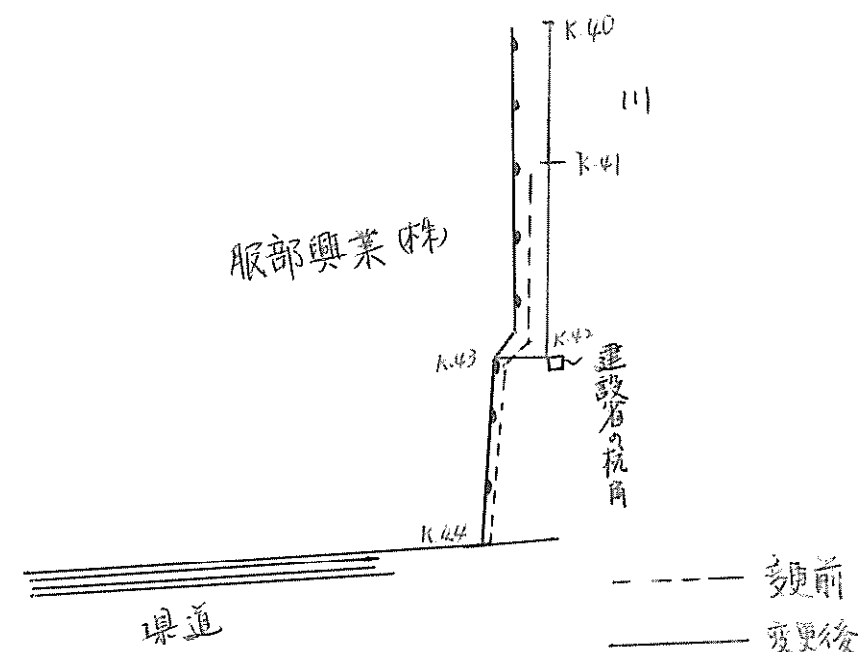
順NO. X ₀ , Y ₀ =	X	Y	(X-X ₀) (Y _{N-1} -Y ₀)	(X _{N-1} -X ₀) (Y-Y ₀)
	-150500.000	-42600.000		
31	-150552.608	-42644.462		
1	-150554.995	-42650.712	2445.187690	2667.856896
2	-150543.592	-42653.419	2210.637504	2937.777905
34	-150541.835	-42648.577	2234.783865	2117.568584
31	-150552.608	-42644.462	2555.538816	1860.067770
			9446.147875	9583.271155
			ハイロセキ=	137.123280
			ロセキ=	68.561640
			ズリ	-0.410050
				<u>68.148590</u>

340 LOT

順NO. X ₀ , Y ₀ =	X	Y	(X-X ₀) (Y _{N-1} -Y ₀)	(X _{N-1} -X ₀) (Y-Y ₀)
	-150400.000	-42500.000		
14	-150406.294	-42541.493		
27	-150407.946	-42541.532	329.703378	261.402408
26	-150408.404	-42558.939	349.034928	468.329294
25	-150423.710	-42558.801	1397.443690	494.163604
24	-150440.461	-42596.244	2379.147261	2281.945240
23	-150447.883	-42615.161	4608.451452	4659.529221
22	-150452.267	-42630.045	6019.119987	6226.944735
19	-150450.738	-42630.697	6598.223210	6831.140099
18	-150446.320	-42615.697	6053.885040	5870.234386
17	-150438.939	-42596.882	4505.125483	4487.574240
16	-150422.645	-42560.461	2193.892890	2354.290879
15	-150406.798	-42560.603	411.013878	1372.354935
14	-150406.294	-42541.493	381.435282	282.069414
			35226.476479	35589.978455
			ハイロセキ=	363.501976
			ロセキ=	181.750988

元NO.	X	Y
T13	-150513.418	-42537.628
元NO.A - 元NO.B		
T12 - T13	ALHA 69-12-36	DIST 0.000
元NO.	X	Y
23	-150447.883	-42615.161
24	-150440.461	-42596.244
25	-150423.710	-42558.801
26	-150408.404	-42558.939
27	-150407.946	-42541.532
30	-150533.805	-42595.239
33	-150451.298	-42626.757
K33	-150410.800	-42541.600
K34	-150424.400	-42541.300
K35	-150438.900	-42539.500
K36	-150444.000	-42539.200
K37	-150451.500	-42539.300
K38	-150460.100	-42539.100
K39	-150473.500	-42538.200
K40	-150480.100	-42538.200
K41	-150487.800	-42537.600
K42	-150500.422	-42537.191
K43	-150501.182	-42537.739
K44	-150512.082	-42538.924
K45	-150526.645	-42576.496

変更点



6-4 LOT 変更前

元NO. X。Y。	X	Y	(X-X ₀)(Y _{N-1} -Y ₀)	(X _{N-1} -X ₀)(Y-Y ₀)
30	-150400.000	-42500.000		
33	-150533.805	-42595.239		
23	-150451.298	-42626.757	4885.570222	16960.720385
24	-150447.883	-42615.161	6069.505431	5907.528978
25	-150440.461	-42596.244	4659.529221	4608.451452
26	-150423.710	-42558.801	2281.945240	2379.147261
27	-150408.404	-42558.939	494.163604	1397.443690
K33	-150407.946	-42541.532	468.329294	349.034928
K34	-150410.800	-42541.600	448.545600	330.553600
K35	-150424.400	-42541.300	1015.040000	446.040000
K36	-150438.900	-42539.500	1606.570000	963.800000
K37	-150444.000	-42539.200	1738.000000	1524.880000
K38	-150451.500	-42539.300	2018.800000	1729.200000
K39	-150460.100	-42539.100	2361.930000	2013.650000
K40	-150473.500	-42538.200	2873.850000	2295.820000
K41	-150480.100	-42538.200	3059.820000	2807.700000
K42	-150487.800	-42537.600	3353.960000	3011.760000
K43	-150500.422	-42537.191	3775.867200	3265.369800
K44	-150501.182	-42537.739	3763.059762	3789.825858
K45	-150512.082	-42538.924	4229.862598	3938.408168
30	-150526.645	-42576.496	4929.529980	8573.824672
30	-150533.805	-42595.239	10235.547280	12061.543155
			64269.425432	78354.701947
			イノイノセキ=	14085.276515
			ノセキ=	7042.638257

 カイノセキ= 0.000000
 カクヒソウノセキ= 7042.638257
 スミソウノセキ= 0.000000

6-4 LOT

チ/NO. X。Y。	X	Y	(X-X。)(YN-1-Y。)	(XN-1-X。)(Y-Y。)
30	-150400.000	-42500.000		
33	-150533.805	-42595.239		
23	-150451.298	-42626.757	4885.570222	16960.720385
24	-150447.883	-42615.161	6069.505431	5907.528978
25	-150440.461	-42596.244	4659.529221	4608.451452
26	-150423.710	-42558.801	2281.945240	2379.147261
27	-150408.404	-42558.939	494.163604	1397.443690
K33	-150407.946	-42541.532	468.329294	349.034928
K34	-150410.800	-42541.600	448.545600	330.553600
K35	-150424.400	-42541.300	1015.040000	446.040000
K36	-150438.900	-42539.500	1606.570000	963.800000
K37	-150444.000	-42539.200	1738.000000	1524.880000
K38	-150451.500	-42539.300	2018.800000	1729.200000
K39	-150460.100	-42539.100	2361.930000	2013.650000
K40	-150473.500	-42538.200	2873.850000	2295.820000
K41	-150480.100	-42538.200	3059.820000	2807.700000
K. 41	-150487.799	-42537.597	3353.921800	3011.519700
K. 42	-150500.771	-42536.859	3788.687287	3236.183341
K. 43	-150501.147	-42538.016	3728.177273	3830.910336
K. 44	-150512.134	-42539.056	4262.886144	3950.397232
K45	-150526.645	-42576.496	4946.247120	8577.802464
30	-150533.805	-42595.239	10235.547280	12061.543155
			64297.065516	78382.326522
			イノセキ=	14085.261006
			スノセキ=	7042.630503

新点

ガ イウ スノセキ= 0.000000
 カブヒソウノセキ= 7042.630503
 スミキリソウノセキ= 0.000000

面積計算書

工区

平野

ブロック

6

計算者

精算書

備考

点	(1)	(2)	(3)	(4)	(5)	(6)	(3) ×	(5)	(2) ×	(6)
	X	X - (定数)	X _{n-1} - X _{n+1}	Y	Y - (定数)	Y _{n-1} - Y _{n+1}	+	-	+	-
1	-150,554.995	-150,554 0.995	- 0.646	-42,650.712	-42,649 1.712	+ 1.023	1.105952			1.017885
1-1	-150,554.045	0.045	- 0.004	-42,650.937	1.937	- 0.798	0.598848		0.035910	
1-2	-150,554.691	0.691	+ 0.750	-42,649.914	0.914	- 0.225		0.868300	0.155475	
							1.694800	0.868300	0.191385	1.017885
							0.826500			0.826500
							Y X = 0.410250			