

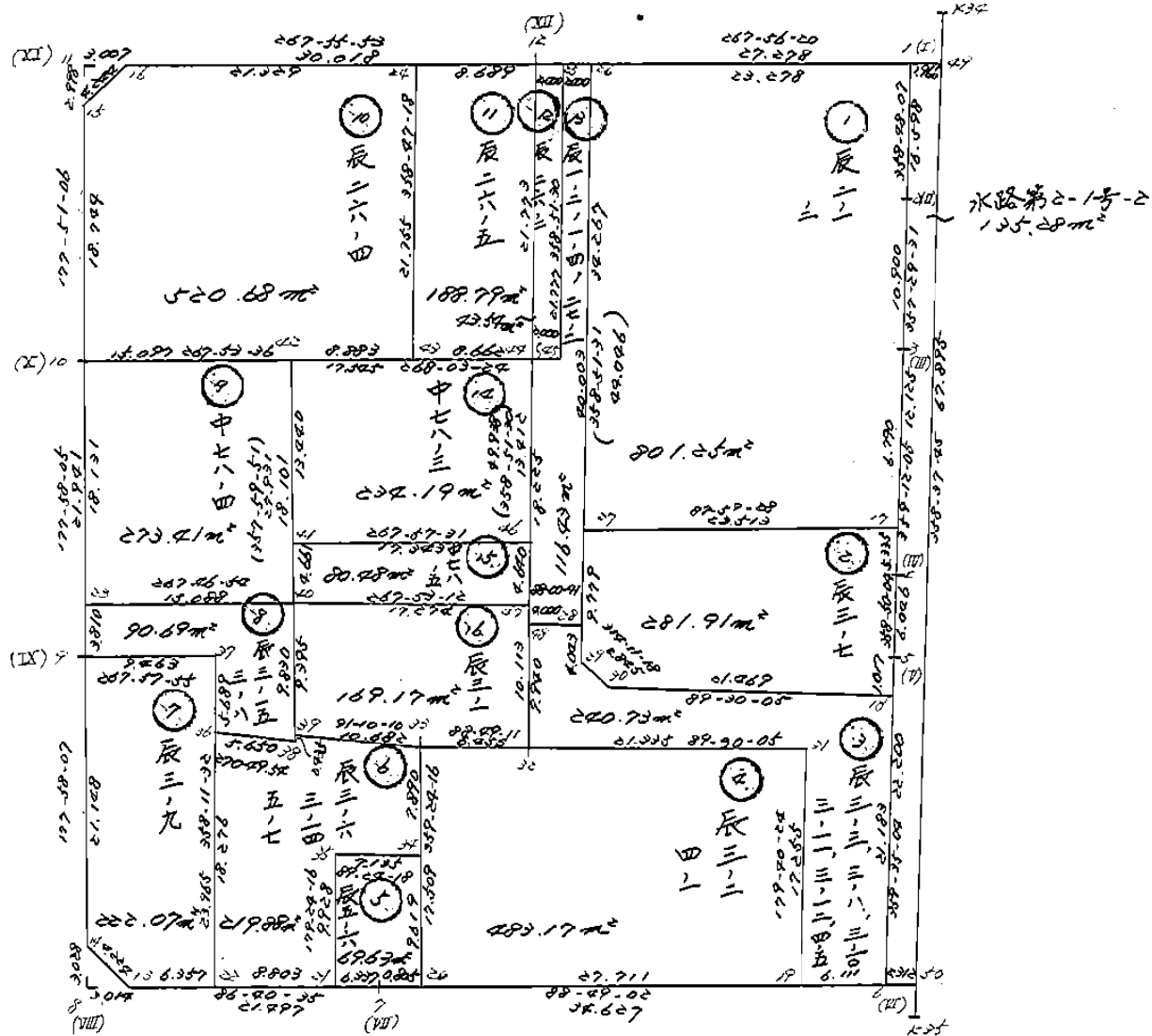
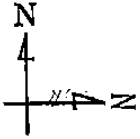
26 ブロック

画地略図

街区番号


2-26


備考



記入者

点検者

面積計算書		工 区	2	ブ ロ ック	26	計 算 者		精 算 者		備 考	(全 体)
点	①	②	③	④	② × ③	① × ④					
	X	$X_{n-1} - X_{n+1}$	Y	$Y_{n-1} - Y_{n+1}$							
2-26-49	-150670.099	66.823	-40130.206	-30.848	-2681644.880438	4647946.558256					
2-26-50	-150737.974	68.637	-40128.582	35.307	-2754333.607060	-5322150.890594					
2-26-7	-150738.737	2.008	-40165.514	58.391	-80668.418317	-8801860.961535					
2-26-13	-150739.983	-1.605	-40186.974	24.577	64500.093270	-3704736.562191					
2-26-14	-150737.132	-23.986	-40190.091	3.867	963999.522726	-582900.489444					
2-26-9	-150715.997	-43.062	-40190.841	1.528	1730697.995142	-230294.043416					
2-26-10	-150694.070	-40.658	-40191.619	1.481	1634110.845302	-223177.917670					
2-26-15	-150675.339	-21.836	-40192.322	-2.190	877639.543192	329978.992410					
2-26-16	-150672.234	-4.188	-40189.429	-32.891	168313.328652	4955760.448494					
2-26-12	-150671.151	-2.134	-40159.431	-59.222	85728.337355	8923092.105867					
TOTAL					8342.759823	-8342.759823					
				メソキ	4171.379911						

面積計算書		工 区	2	ブ ロ ック	26	計 算 者		精 算 者		備 考	辰 己 3-6 3-14 5-7
点	①	②	③	④	② × ③	① × ④					
	X	$X_{n-1} - X_{n+1}$	Y	$Y_{n-1} - Y_{n+1}$							
2-26-33	-150721.212	8.108	-40164.891	-10.762	-325656.936228	1622061.683544					
2-26-34	-150729.102	7.964	-40164.809	7.052	-319876.555356	-1062971.773124					
2-26-35	-150729.176	10.002	-40171.943	7.031	-401799.775886	-1059776.837159					
2-26-21	-150739.104	10.437	-40171.840	8.684	-419309.648736	-1309138.970419					
2-26-22	-150739.614	-17.757	-40180.628	9.365	713487.411396	-1411676.485110					
2-26-36	-150721.347	-18.185	-40181.205	-5.072	730695.212925	764458.671984					
2-26-38	-150721.429	-0.353	-40175.556	-5.634	14181.971268	849164.530986					
2-26-39	-150720.994	-0.217	-40175.571	-10.665	8718.098907	1607439.401010					
TOTAL					439.778288	-439.778288					
				メソキ	219.889144						

B. NO.

26

各筆面積計算書

符番	地番	隅切	地積	摘要
	水路第 2-1号-2		135.28	
1	辰己 2-1 2-2		801.25	
2	" 3-7		281.91	
3	" 3-3, 3-8, 3-10 3-11, 3-12, 4-5		240.73	
4	" 3-2 4-1		483.17	
5	" 5-6		69.63	
6	" 3-6, 3-14 5-7		219.88	
7	" 3-9		222.07	
8	" 3-15 3-8		90.69	
9	中仙道 78-4		273.41	
10	辰己 26-4		520.68	
11	" 26-5		188.79	
12	" 26-2		43.54	
13	" 1-2 27-2 1-4		116.43	
14	中仙道 78-3		234.19	
15	" 78-5		80.48	
16	辰己 3-1		169.17	
		計	4171.30	
	全体		4171.37	

計算者



点検者



(株) 山陽設計