

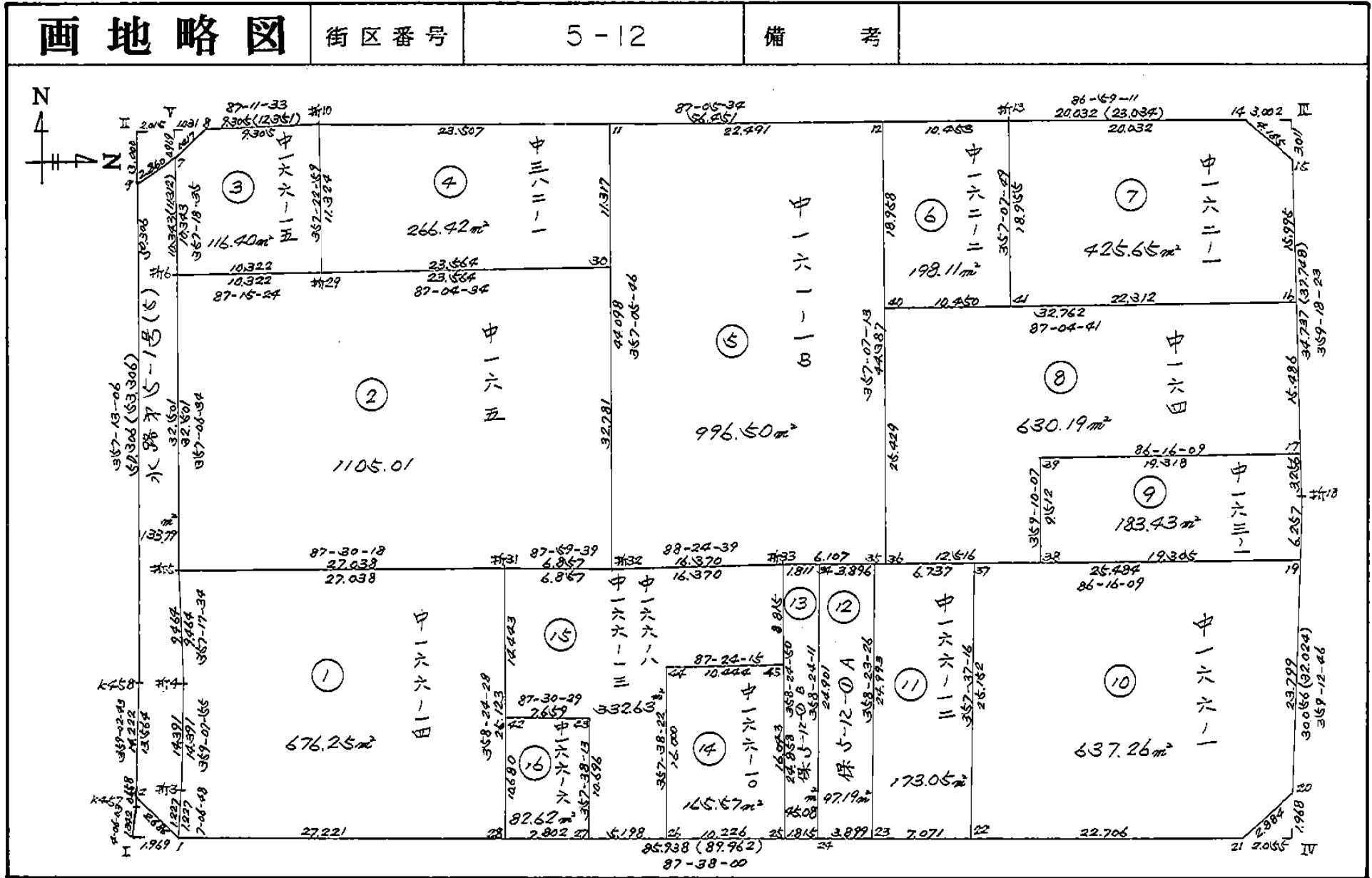
1 2 ブ ロ ッ ク

画地略图

街区番号

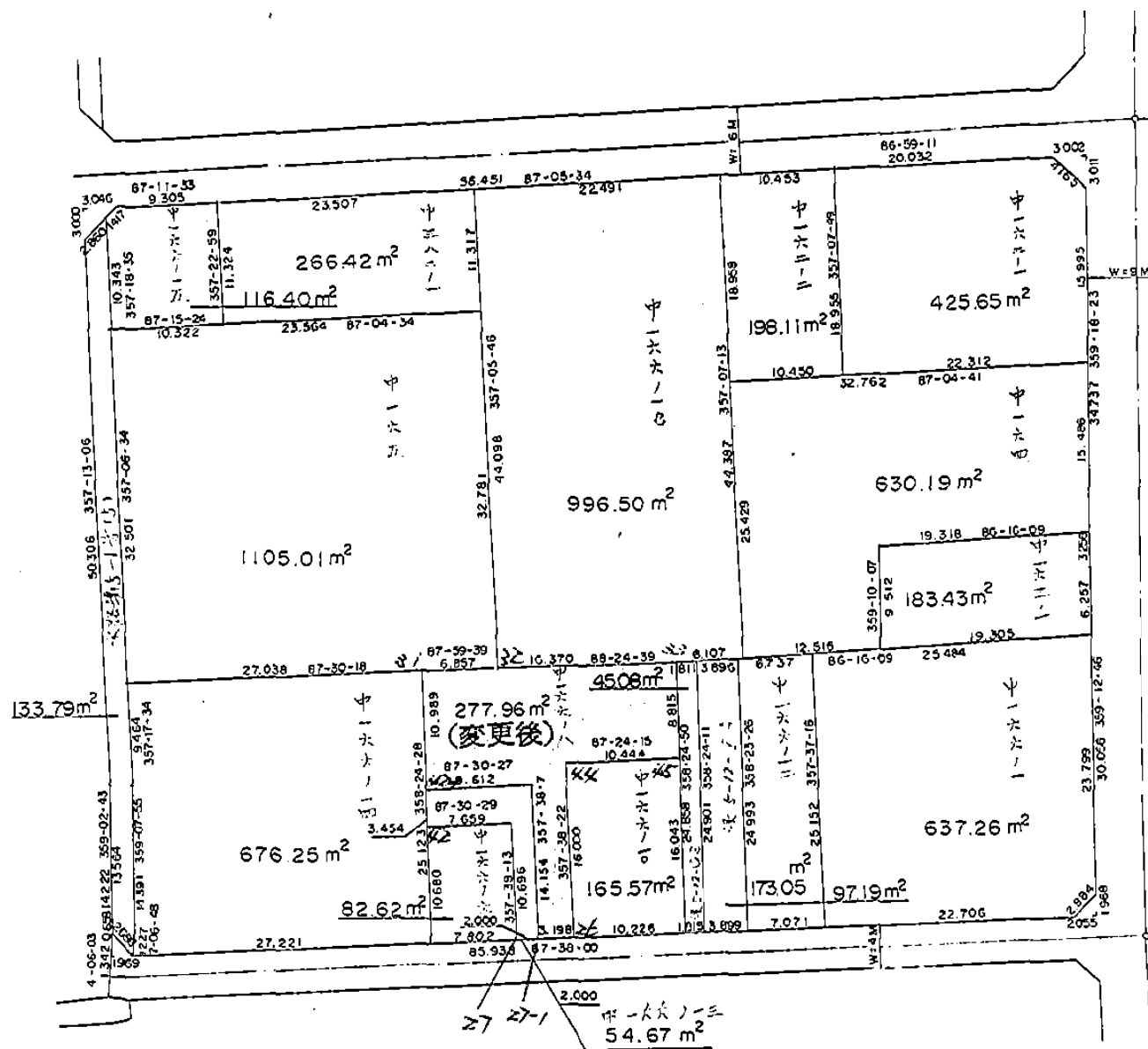
5-12

備考

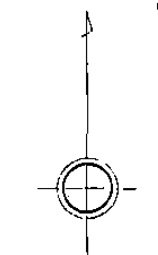


記入者

点検者




権利違いによる分筆



12
5区


S = 1 : 500

面積計算書		工区	5	ブロック	12	計算者	精算者	備考
点	①	②	③		④	② × ③		① × ④
	X	$X_{n-1} - X_{n+1}$	Y		$Y_{n-1} - Y_{n+1}$			
5-12-26	-150414.302	16.118	-40566.292		2.536	-653847.494456		-381450.669872
12-27-1	-150414.434	-14.010	-40569.487		3.779	568378.512870		-568416.146086
12-42-2	-150400.292	-13.724	-40570.071		10.187	556783.654404		-1532127.774604
12-42-1	-150400.710	-10.566	-40579.674		9.908	428764.835484		-1490170.234680
5-12-31	-150389.726	-11.224	-40579.979		-6.548	455469.684296		984751.925848
5-12-32	-150389.486	-0.694	-40573.126		-23.217	28157.749444		3491592.696462
5-12-33	-150389.032	8.357	-40556.762		-16.608	-338932.860034		2497661.043456
5-12-45	-150397.843	9.284	-40556.518		10.189	-376526.713112		-1532403.622327
5-12-44	-150398.316	16.459	-40566.951		9.774	-667691.446509		-1469993.140584
TOTAL						555.922387		-555.922387
					メソキ	277.961193		


面積計算書		工 区	5	ブ ロ ック	12	計 算 者		精 算 者		備 考	全体
点 名	X ①	$X_{n-1} - X_{n+1}$ ②		Y ③	$Y_{n-1} - Y_{n+1}$ ④		② × ⑤			① × ④	
	-150,000.000			-40,000.000							
5-12-1	-415.963	1.633		-606.479	87.748		-990.380207			-36499.921324	
5-12-2	-414.047	-15.478		-608.361	2.108		9416.211558			-872.811076	
K-458	-400.485	-63.809		-608.587	2.667		38833.327883			-1068.093495	
5-12-9	-350.238	-52.374		-611.028	0.529		32001.980472			-185.275902	
5-12-7	-348.111	-3.145		-609.116	-2.897		1915.669820			1008.477567	
5-12-8	-347.093	-1.474		-608.131	-10.279		896.385094			3567.768947	
5-12-10	-346.637	-3.319		-598.837	-65.672		1987.540003			22764.345064	
5-12-13	-343.774	-3.916		-542.459	-76.382		2124.269444			26258.145668	
5-12-14	-342.721	1.800		-522.455	-23.038		-940.419000			7895.606398	
5-12-15	-345.574	37.587		-519.421	-3.455		-19523.477127			1193.958170	
5-12-18	-380.308	64.787		-519.000	-0.834		-33624.453000			317.176872	
5-12-20	-410.361	32.106		-518.587	1.613		-16649.754222			-661.912293	
5-12-21	-412.414	5.602		-520.613	87.892		-2916.474026			-36247.891288	

倍面積 12530.426692 12530.426692


1 / 2 6265.213346

面積計算書		工区	5	ブロック	12	計算者		精算者	備考
点名	X ①	$X_{n-1} - X_{n+1}$ ②	Y ③	$Y_{n-1} - Y_{n+1}$ ④	② × ③	① × ④			
5-12-6	-150,358.443	-9.838	-40,608.630	10.796	399507.701940	-1623269.750620			
5-12-7	-150,348.111	-11.350	-40,609.116	-0.499	460913.466600	75023.707389			
5-12-8	-150,347.093	-1.474	-40,608.131	-10.279	59856.385094	1545417.768940			
5-12-10	-150,346.637	10.856	-40,598.837	-9.811	-440740.974472	1475050.855600			
5-12-29	-150,357.949	11.806	-40,598.320	9.793	-479303.765920	-1472455.394550			
				倍面積	232.813242	232.813241			
				1/2	116.406621				


申 166-15

面積計算書		工区	5	ブロック	12	計算者		精算者	備考
点名	X ①	$X_{n-1} - X_{n+1}$ ②	Y ③	$Y_{n-1} - Y_{n+1}$ ④	② × ③	① × ④			
5-12-12	-150,344.304	-19.464	-40,552.898	-9.487	789321.606672	1426316.412040			
5-12-13	-150,343.774	18.401	-40,542.459	-11.388	-746021.788059	1712114.898310			
5-12-41	-150,362.705	19.464	-40,541.510	9.487	-789099.950640	-1426490.982330			
5-12-40	-150,363.238	-18.401	-40,551.946	11.388	746196.358346	-1712336.554340			
				倍面積	396.226319	396.226320			
				1/2	198.113159				

中 102-2

面積計算書		工区	5	ブロック	12	計算者		精算者	備考
点名	X ①	$X_{n-1} - X_{n+1}$ ②	Y ③	$Y_{n-1} - Y_{n+1}$ ④	② × ③	① × ④			
5-12-26	-150,414.302	16.201	-40,566.292	4.534	-657214.496692	-681978.445268			
5-12-27	-150,414.517	-10.472	-40,571.485	5.634	424864.590920	-847435.388778			
5-12-43	-150,403.830	-10.354	-40,571.926	8.093	420081.721804	-1217218.196190			
5-12-42	-150,404.163	-14.104	-40,579.578	8.053	572334.368112	-1211204.724630			
5-12-31	-150,389.726	-14.677	-40,579.979	-6.452	595592.351783	970314.512152			
5-12-32	-150,389.486	-0.694	-40,573.126	-23.217	28157.749444	3491592.696460			
5-12-33	-150,389.032	8.357	-40,556.762	-16.608	-338932.860034	2497661.043450			
5-12-45	-150,397.843	9.284	-40,556.518	10.189	-376526.713112	-1532403.622320			
5-12-44	-150,398.316	16.459	-40,566.951	9.774	-667691.446509	-1469993.140580			
					倍面積	665.265716	665.265704		
					1/2	332.632858			

申 166-8
申 166-13

面積計算書		工区	5	ブロック	12	計算者		検査者	備考
点名	X ①	$X_{n-1} - X_{n+1}$ ②	Y ③	$Y_{n-1} - Y_{n+1}$ ④	② × ③			① × ④	
5-12-9	-150,350.238	-52.374	-40,611.028	0.529	2126961.980470			-79535.275902	
5-12-7	-150,348.111	8.205	-40,609.116	-2.398	-333197.796780			360534.770178	
5-12-6	-150,358.443	42.792	-40,608.630	-2.125	-1737724.494960			319511.691375	
5-12-5	-150,390.903	41.913	-40,606.991	-2.086	-1701960.813780			313715.423658	
5-12-4	-150,400.356	23.842	-40,606.544	-0.665	-968141.222048			100016.236740	
5-12-3	-150,414.745	15.607	-40,606.326	-0.065	-633742.929882			9776.958425	
5-12-1	-150,415.963	-0.698	-40,606.479	2.035	28343.322342			-306096.484705	
5-12-2	-150,414.047	-15.478	-40,608.361	2.108	628536.211558			-317072.811076	
K-458	-150,400.485	-63.809	-40,608.587	2.667	2591193.327880			-401118.093495	
				倍面積	267.584800			267.584802	
				1/2	133.792400				

符番	地番	スミキリ	地積	摘要
1	中 166-14		676.25	
2	中 165		1105.01	
3	中 166-15		116.40	
4	中 382-1		266.42	
5	中 161-1B		996.50	
6	中 162-2		198.11	
7	中 162-1		425.65	
8	中 164		630.19	
9	中 163A		183.43	
10	中 166-1		637.26	
11	中 166-12		173.05	
12	保 12-1A		97.19	
13	保 12-1B		45.08	
14	中 166-10		165.57	
15	中 166-8.-13		332.63	
16	中 166-6		82.62	
	水路第5-1号(5)		133.79	
		計	6265.15	
	全 体		6265.21	