

562.4.7分筆

面積計算書		街区	34	工区	6	西地番号	計算者	精算者	備考
点名	①	②	③		④	② × ③		① × ④	
	X	$X_{n-1} - X_{n+1}$	Y		$Y_{n-1} - Y_{n+1}$				
6-34-35	-150826.190	-38.974	-40904.031		-4.722	1594193.704194		712201.269180	
6-34-11	-150823.221	-2.782	-40900.915		-15.088	113786.345530		2275620.758448	
6-34-2	-150823.408	0.558	-40888.943		-40.915	-22816.030194		6170939.738320	
6-34-3	-150823.779	0.950	-40860.000		-76.700	-38817.000000		11568183.849300	
6-34-4	-150824.358	0.660	-40812.243		-56.263	-26936.080380		8485830.854154	
6-34-12	-150824.439	2.315	-40803.737		-10.734	-94460.651155		1618949.528226	
6-34-13	-150826.673	44.638	-40801.509		-1.738	-1821297.758742		262136.757674	
6-34-14	-150869.077	45.355	-40801.999		3.604	-1850574.664645		-543732.153508	
6-34-15	-150872.028	2.667	-40805.113		27.915	-108827.236371		-4211592.661620	
6-34-7	-150871.744	-0.980	-40829.914		80.236	40013.315720		-12105345.251584	
6-34-8	-150871.048	-0.865	-40885.349		73.049	35365.826885		-11020979.185352	
6-34-16	-150870.879	-3.231	-40902.963		20.567	132157.473453		-3102961.368393	
6-34-17	-150867.817	-8.684	-40905.916		2.674	355226.974544		-403420.542658	
6-34-10	-150862.195	-41.627	-40905.637		-1.885	1702778.951399		284375.237575	

面積計算書

工区

ブロック

6-34

計算者

精算者

備考

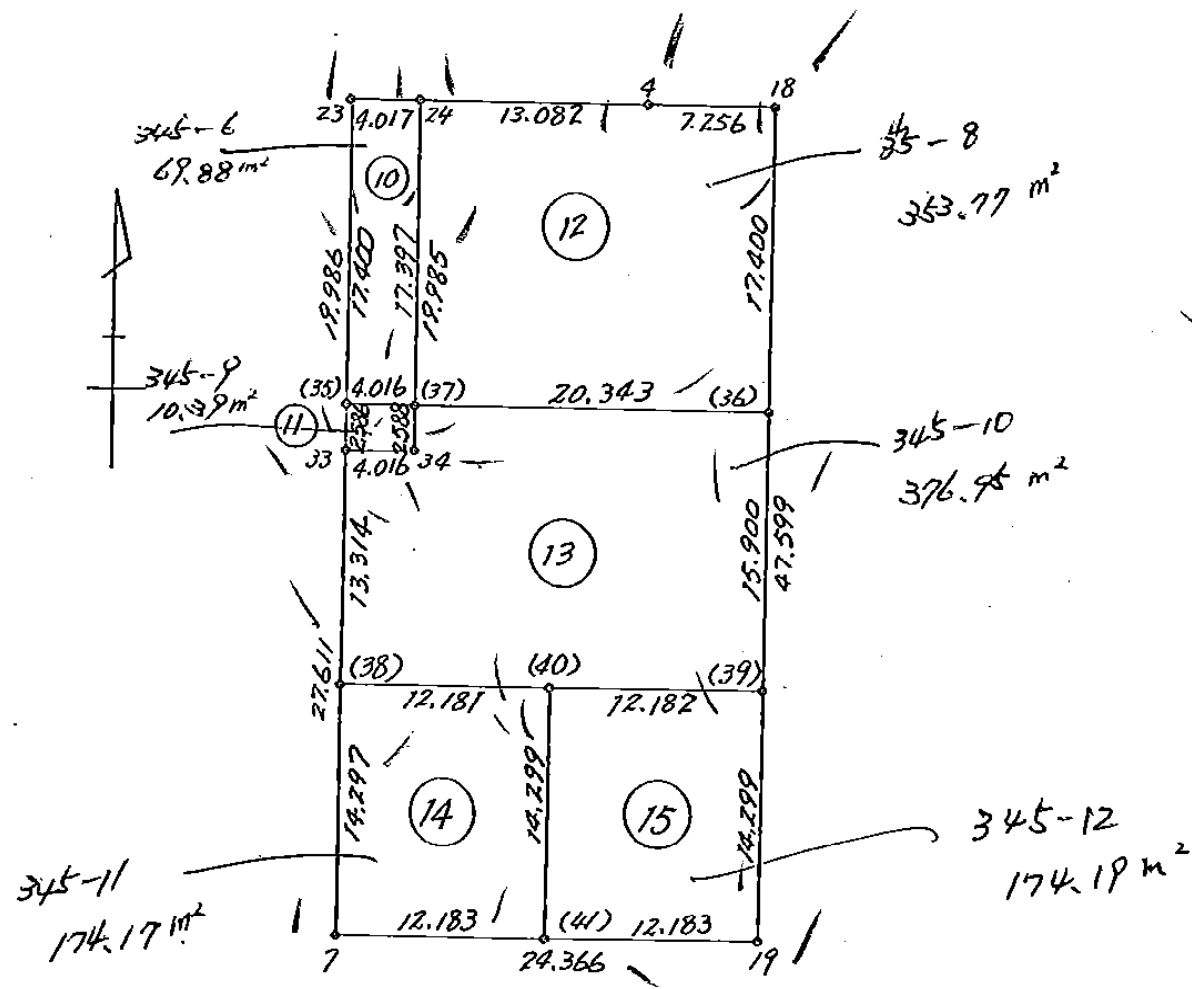
辰巳345-10

点	①	②	③	④	⑤	⑥	③ × ⑤		② × ⑥	
	X	X - (定数)	X _{n-1} - X _{n+1}	Y	Y - (定数)	Y _{n-1} - Y _{n+1}	+	-	+	-
37	-150,844,595	-44.595	-2.357	-40,825,535	-25.535	-20.373	60.185995		847.414935	
36	-150,844,826	-44.826	16.130	-40,805,193	-5.193	-20.154		-83.763090	847.961204	
39	-150,857,725	-57.725	15.622	-40,805,381	-5.381	24.549		-84.061982		1417.091025
38	-150,857,448	-57.448	-13.590	-40,829,742	-29.742	24.201	404.193780			1390.299048
33	-150,844,135	-44.135	-13.265	-40,829,582	-29.582	-4.176	392.405230		184.307760	
34	-150,844,183	-44.183	-2.540	-40,825,566	-25.566	-4.047	64.937640		178.808601	
							753.897573			753.897573
							376.9487865			376.9487865
							≒ 376.75 とする			

△

3

K39	-150,857.725	-40,805.381	K39	K19	180-40-38	14.299
K19	-150,872.023	-40,805.550				
K39	-150,857.725	-40,805.381				
K36	-150,841.826	-40,805.193	K39	K36	0-40-39	15.900
K36	-150,841.826	-40,805.193				
K37	-150,841.595	-40,825.535	K36	K37	270-39-02	20.343
K36	-150,841.826	-40,805.193				
K18	-150,824.427	-40,804.987	K36	K18	0-40-42	17.400



345-6	⑩ 345-6	69.88 m ²
(80.27 m ²)	⑪ 345-9	10.39 m ²
	<hr/>	
(1079.08 m ²)	⑫ 345-8	353.77 m ²
	⑬ 345-10	376.94 m ²
	⑭ 345-11	174.17 m ²
	⑮ 345-12	174.19 m ²
	<hr/>	
		1079.07 m ² 2.01 m ² 不足
		8

S = 1:500

△

10 345-6 /

** 座標法面積計算 **

NO	ST	X	X'	S 1	Y	Y'	S 1	
		-150,800.000			-40,800.000			
1	K23 /	-24.150 /	-17.350	509.066350	-29.341 /	-4.227	102.082050	
2	K24 /	-24.199 /	17.445	-441.777180	-25.324 /	-3.806	92.101394	
3	K37 /	-41.595 /	17.350	-443.032250	-25.535 /	4.227	-175.822065	
4	K35 /	-41.549 /	-17.445	515.517195	-29.551 /	3.806	-158.135494	
倍面積				139.774115			139.774115	
							面積	69.8870575

11 345-9 /

** 座標法面積計算 **

NO	ST	X	X'	S 1	Y	Y'	S 1	
		-150,800.000			-40,800.000			
1	K35 /	-41.549 /	-2.540	75.059540	-29.551 /	-4.047	168.148803	
2	K37 /	-41.595 /	2.634	-67.259190	-25.535 /	-3.985	165.756075	
3	K34 /	-44.183 /	2.540	-64.937640	-25.566 /	4.047	-178.808601	
4	K33 /	-44.135 /	-2.634	77.918988	-29.582 /	3.985	-175.877975	
倍面積				20.781698			20.781698	
							面積	10.3908490

12 345-8 /

** 座標法面積計算 **

NO	ST	X	X'	S 1	Y	Y'	S 1	
		-150,800.000			-40,800.000			
1	K24 /	-24.199 /	-17.237	436.509788	-25.324 /	-13.292	321.653108	
2	K4 /	-24.358 /	0.228	-2.791404	-12.243 /	-20.337	495.368646	
3	K18 /	-24.427 /	17.468	-87.112916	-4.987 /	-7.050	172.210350	
4	K36 /	-41.826 /	17.168	-89.153424	-5.193 /	20.548	-859.440648	
5	K37 /	-41.595 /	-17.627	450.105445	-25.535 /	20.131	-837.348945	
倍面積				707.557489			707.557489	
							面積	353.7787445

△ (13) 345-10 /

** 座標法面積計算 **

NO	ST	X	X'	S 1	Y	Y'	S 1
		-150,800.000			-40,800.000		
1	K37 /	-41.595 /	-2.357	60.185995	-25.535 /	-20.373	847.414935
2	K36 /	-41.826 /	16.130	-83.763090	-5.193 /	-20.154	842.961204
3	K39 /	-57.725 /	15.622	-84.061982	-5.381 /	24.549	-1417.091025
4	K38 /	-57.448 /	-13.590	404.193780	-29.742 /	24.201	-1390.299048
5	K33 /	-44.135 /	-13.265	392.405230	-29.582 /	-4.176	184.307760
6	K34 /	-44.183 /	-2.540	64.937640	-25.566 /	-4.047	178.808601
倍面積				753.897573			753.897573

面積 376.9487865,
≒ 376.25 とす

(14) 345-11 /

** 座標法面積計算 **

NO	ST	X	X'	S 1	Y	Y'	S 1
		-150,800.000			-40,800.000		
1.	K38 /	-57.448 /	-14.158	421.087236	-29.742 /	-12.352	709.597696
2	K40 /	-57.586 /	14.436	-253.525032	-17.562 /	-12.010	691.607860
3	K41 /	-71.884 /	14.158	-251.049656	-17.732 /	12.352	-887.911168
4	K7 /	-71.744 /	-14.436	431.838504	-29.914 /	12.010	-861.645440
倍面積				348.351052			348.351052

面積 174.1755260

(15) 345-12 /

** 座標法面積計算 **

NO	ST	X	X'	S 1	Y	Y'	S 1
		-150,800.000			-40,800.000		
1	K40 /	-57.586 /	-14.159	248.660358	-17.562 /	-12.351	711.244686
2	K39 /	-57.725 /	14.437	-77.685497	-5.381 /	-12.012	693.392700
3	K19 /	-72.023 /	14.159	-78.582450	-5.550 /	12.351	-889.556073
4	K41 /	-71.884 /	-14.437	255.996884	-17.732 /	12.012	-863.470608
倍面積				348.389295			348.389295

面積 174.1946475

BNO. 34 各筆面積計算書

画番	地号	地番	隅切	地積	摘要
1		辰345-1 ⁸ (田)		1,079.08	✓
2		辰343-1		790.76	✓
3		辰342-3 辰343-4		393.03	✓
4		田229		1,231.48	✓
5		田228		573.60	✓
6		田235-2(C)		307.22	✓
7		辰359(C)		103.60	✓
8		辰343-2		177.50	✓
9		辰345-6		80.27	✓
		計		4,736.54	✓
		全体		4,736.58	✓
			計算者	点検者	