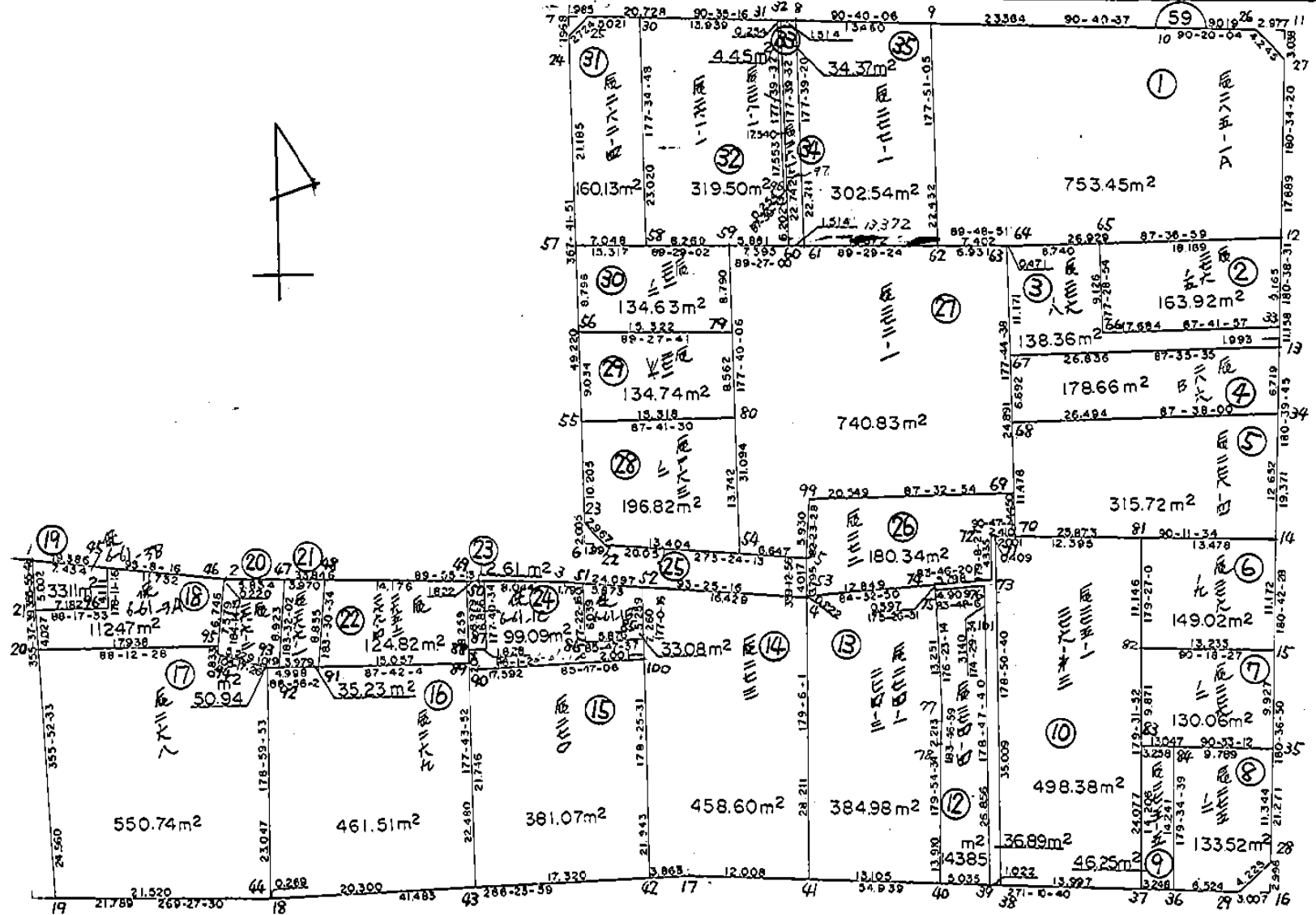


画地略図

街区番号

6-59

備考



記入者

点検者

面積計算書		街区	59	工区	6	画地番号		計算者		精算者		備考	
点名	①	②	③	④	② × ③		① × ④						
	X	$X_{n-1} - X_{n+1}$	Y	$Y_{n-1} - Y_{n+1}$									
6-59-1	-150939.632	-3.253	-40572.601	-18.953	131982.671053		2860758.845296						
6-59-2	-150941.368	1.689	-40553.293	-53.154	-68494.511877		8023137.474672						
6-59-3	-150941.321	1.391	-40519.447	-57.900	-56362.550777		8739502.485900						
6-59-4	-150942.759	-2.579	-40495.393	-23.999	104437.618547		3622475.273241						
6-59-5	-150938.742	-5.207	-40495.448	20.071	210859.797736		-3029491.490682						
6-59-22	-150937.552	-3.312	-40515.464	22.090	134187.216768		-3334210.523680						
6-59-23	-150935.430	-51.303	-40517.538	4.051	2078671.252014		-611439.426930						
6-59-24	-150886.249	-51.127	-40519.515	0.071	2071641.243405		-10712.923679						
6-59-25	-150884.303	-1.733	-40517.609	-22.633	70217.016397		3414964.429799						
6-59-8	-150884.516	0.370	-40496.882	-34.186	-14983.846340		5158138.063976						
6-59-9	-150884.673	0.433	-40483.423	-36.821	-17529.322159		5555724.544533						
6-59-10	-150884.949	0.329	-40460.061	-32.381	-13311.360069		4885805.533569						
6-59-26	-150885.002	3.108	-40451.042	-11.966	-125721.838536		1805489.933932						
6-59-27	-150888.057	20.943	-40448.095	-2.768	-847104.453585		417658.141776						

面積計算書		街区	59	工区	6	面地番号		計算者		精算者		備考	
点名	①	②	③	④	② × ③		① × ④						
	X	$X_{n-1} - X_{n+1}$	Y	$Y_{n-1} - Y_{n+1}$									
6-59-12	-150905.945	29.045	-40448.274	0.304	-1174820.118330		-45875.407280						
6-59-13	-150917.102	30.527	-40448.399	0.349	-1234768.276273		-52670.068598						
6-59-14	-150936.472	30.541	-40448.623	0.362	-1235341.395043		-54639.002864						
6-59-15	-150947.643	32.441	-40448.761	0.366	-1312198.255601		-55246.837338						
6-59-28	-150968.913	24.206	-40448.989	3.266	-979108.227734		-493064.469858						
6-59-29	-150971.849	1.807	-40452.027	57.966	-73096.812789		-8751234.199134						
6-59-17	-150970.720	1.476	-40506.955	96.329	-59788.265580		-14542858.486880						
6-59-18	-150973.325	2.811	-40548.356	63.189	-113981.428716		-9539853.433425						
6-59-19	-150973.531	-24.689	-40570.144	23.583	1001636.285216		-3560408.781573						
6-59-20	-150948.636	-28.910	-40571.939	2.102	1172934.756490		-317294.032872						
6-59-21	-150944.621	-9.004	-40572.246	0.662	365312.502984		-99925.339102						
TOTAL					15269.697201		15269.697201						
				メソセキ	7634.848600								

面積計算書		街区	59	工区	6	西地番号	13	計算者		精算者		備考	
点名	①	②	③	④	② × ③		① × ④						
	X	$X_{n-1} - X_{n+1}$	Y	$Y_{n-1} - Y_{n+1}$									
6-59-40	-150971.236	13.641	-40481.848	13.080	-552212.888568		-1974703.766880						
6-59-41	-150970.967	-28.477	-40494.950	13.545	1153174.691150		-2044901.748015						
6-59-4	-150942.759	-28.430	-40495.393	0.446	1151284.022990		-67320.470514						
6-59-53	-150942.537	-1.443	-40495.396	-12.788	58434.856428		1930253.163156						
6-59-74	-150941.316	-0.644	-40482.605	-12.837	26070.797620		1937633.673492						
6-59-75	-150941.893	13.802	-40482.559	-0.881	-558740.279318		132979.807733						
6-59-77	-150955.118	15.433	-40481.724	-0.689	-624754.446492		104008.076302						
6-59-78	-150957.326	16.118	-40481.870	0.124	-652486.780660		-18718.708424						
TOTAL					769.973150		769.973150						
					ムセキ		384.986575						

面積計算書		街区	59	工区	6	面地番号	24	計算者		精算者		備考	
点名	①	②	③	④	② × ③		① × ④						
	X	$X_{n-1} - X_{n+1}$	Y	$Y_{n-1} - Y_{n+1}$									
6-59-50	-150941.332	-6.861	-40527.491	-7.766	278059.115751		1172210.384312						
6-59-3	-150941.321	0.096	-40519.447	-9.836	-3889.866912		1484658.833356						
6-59-51	-150941.428	6.140	-40517.655	-2.069	-248778.401700		312297.814532						
6-59-86	-150947.461	5.602	-40517.378	-6.137	-226978.351556		926364.568157						
6-59-85	-150947.030	1.567	-40511.518	-5.965	-63481.548706		900399.033950						
6-59-100	-150949.028	3.291	-40511.413	17.439	-133323.060183		-2632400.099292						
6-59-90	-150950.321	-0.719	-40528.957	17.624	29140.320083		-2660348.457304						
6-59-88	-150948.309	-2.139	-40529.037	-1.744	86691.610143		263253.850896						
6-59-87	-150948.182	-6.977	-40527.213	-1.546	282758.365101		233365.889372						
TOTAL					198.182021		198.182021						
					メンセキ		99.091010						

面積計算書		街区	59	工区	6	面地番号	26	計算者		精算者		備考	
点名	①	②	③		④	② × ③		① × ④					
	X	$X_{n-1} - X_{n+1}$	Y		$Y_{n-1} - Y_{n+1}$								
6-59-5	-150938.742	-9.720	-40495.448		-0.195	393615.754560		29433.054690					
6-59-99	-150932.817	-6.804	-40495.201		-20.777	275529.347604		3135931.138809					
6-59-69	-150931.938	3.568	-40474.671		-20.705	-144413.626128		3125045.776290					
6-59-70	-150936.385	4.414	-40474.496		2.235	-178654.425344		-337342.820475					
6-59-72	-150936.352	4.302	-40476.906		2.345	-174131.649612		-353945.745440					
6-59-73	-150940.687	4.964	-40476.841		5.699	-200927.038724		-860210.975213					
6-59-74	-150941.316	1.850	-40482.605		18.555	-74892.819250		-2800716.118380					
6-59-53	-150942.537	-2.574	-40495.396		12.843	104235.149304		-1938555.002691					
TOTAL						360.692410		360.692410					
					メソキ	180.346205							

面積計算書		街区	59	工区	6	画地番号	27	計算者		精算者		備考	
点名	①	②	③	④	② × ③		① × ④						
	X	$X_{n-1} - X_{n+1}$	Y	$Y_{n-1} - Y_{n+1}$									
6-59-5	-150938.742	5.530	-40495.448	6.882	-223939.827440		-1038760.422444						
6-59-54	-150938.347	-31.463	-40502.083	7.900	1274317.037429		-1192412.941300						
6-59-59	-150907.279	-31.139	-40503.348	-6.130	1261233.753372		925061.620270						
6-59-61	-150907.208	-0.190	-40495.953	-20.766	7694.231070		3133739.081328						
6-59-62	-150907.089	-0.141	-40482.582	-20.302	5708.044062		3063715.720878						
6-59-63	-150907.067	24.849	-40475.651	-7.911	-1005779.451699		1193825.807037						
6-59-69	-150931.938	25.750	-40474.671	19.550	-1042222.778250		-2950719.387900						
6-59-99	-150932.817	6.804	-40495.201	20.777	-275529.347604		-3135931.138809						
TOTAL					1481.660940		1481.660940						
					メンセキ		740.830470						

画 番	地 号	地 番	開 切	地 積	摘 要
1		辰285-1(A)		753.45	✓
2		辰276-5		163.92	✓
3		辰276-8		138.36	✓
4		辰286(B)		178.66	✓
5		辰276-4		315.72	✓
6		辰276-9		149.02	✓
7		辰276-2		130.06	✓
8		辰275-2		133.52	✓
9		辰275-5		4.625	✓
10		辰275-1 辰276-3		498.38	✓
12		辰274-4		143.85	✓
13		辰274-1 辰274-3		384.98	✓
14		辰273		458.60	✓
15		辰270		381.07	✓
16		辰269		461.51	✓
17		辰268		550.74	✓
18		保6-61-③(A)		112.47	✓
19		保6-61-③(B)		33.11	✓
20		辰266-2		50.94	✓
21		辰266-1		35.23	✓
22		辰265-2 辰266-4		124.82	✓
23		保6-61-①(C)		12.61	✓
			計算者		点検者

