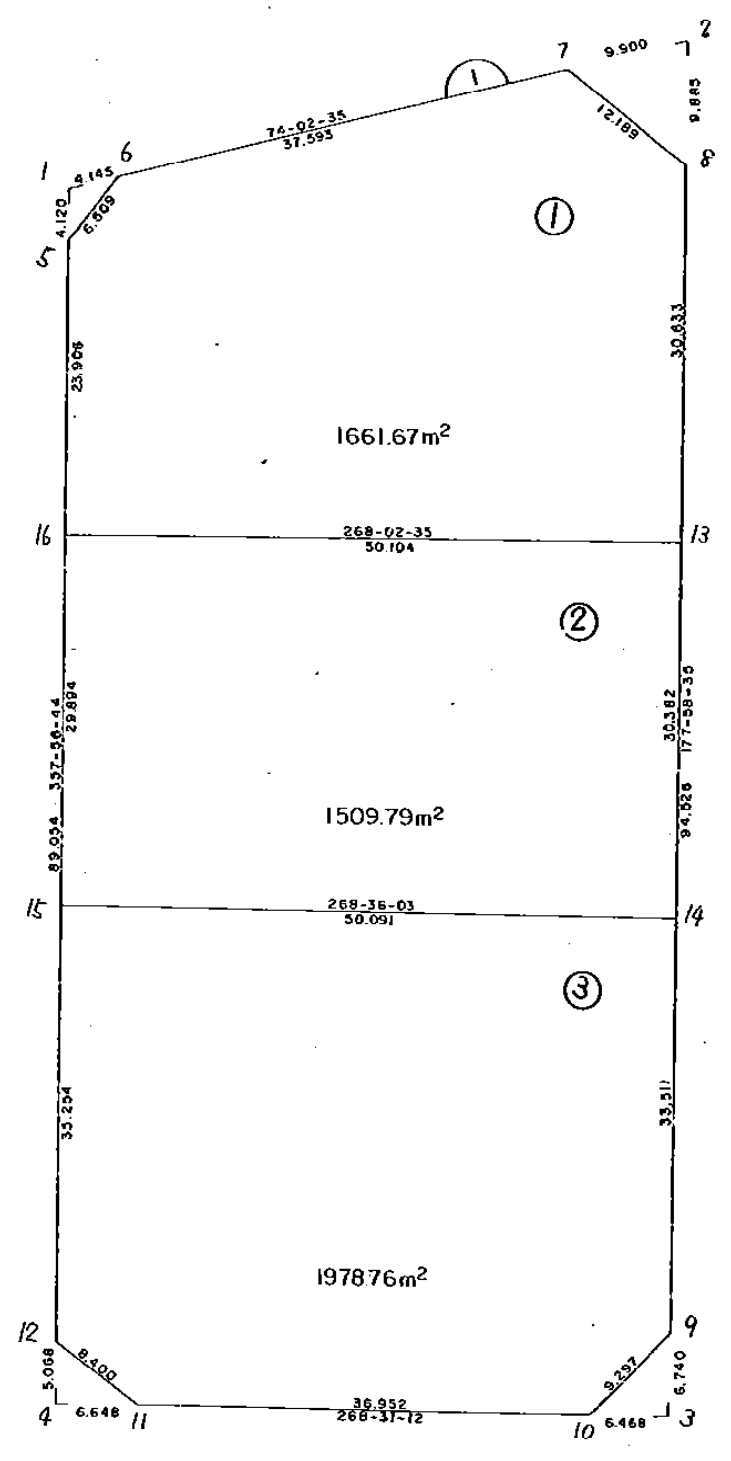


画地略図 街区番号 6-1 備考




点検者 記入者

面積計算書

工区 0 7077 / 1 計算者 徳山 精算書 (Seal) 備考 スミキリ /
スミキリ之

点	①	②	③	④	⑤	⑥	③	⑤	②	⑥
	X	X - (定数)	X _{n-1} - X _{n+1}	Y	Y - (定数)	Y _{n-1} - Y _{n+1}	+	-	+	-
1	-150 500.798	-150.490 10.798	-5.258	-20. 351.220	-40.340 11.220	-3.837	58.994760		41.431926	
6	499.658	9.658	+4.118	347.235	7.235	-0.148		29.793730	1.429384	
5	504.916	14.916	+1.140	351.072	11.072	+3.985		12.622080		59.440260
							58.994760	42.415810	42.861310	59.440260
							16.578950			16.578950
						$\times \frac{1}{2} =$	8.289475			
2	-150 486.602	-150.480 6.602	+7.157	-40 301.572	-40.360 1.572	-9.867		11.250804	65.141934	
8	496.481	16.481	+2.722	301.223	1.223	+9.518		3.329006		156.866158
7	489.324	9.324	-9.879	311.090	11.090	+0.349	109.558110			3.254076
							109.558110	14.579810	65.141934	160.120234
							94.978300			94.978300
						$\times \frac{1}{2} =$	47.489150			

面積計算書

工区 6 フロック 1 計算者 徳山 精算書  備考 ズミキリ3
ズミキリ4

点	①	②	③	④	⑤	⑥	③ × ⑤		② × ⑥		
	X	X - (定数)	X _{n-1} - X _{n+1}	Y	Y - (定数)	Y _{n-1} - Y _{n+1}	+	-	+	-	
3	^{-150.} 597.684	^{-150.590} 7.684	+6.903	^{-40.} 297.647	^{-40.290} 7.647	+6.228			52.78724		47.855952
10	597.851	7.851	-6.736	304.113	14.113	+0.238	95.065168				1.818538
9	590.948	0.948	-0.167	297.885	7.885	-6.466	1.316795			6.129768	
							96.381963	52.78724	6.129768		49.724490
							43.594722				43.594722
							x 1/2 = 21.797361				
4	^{-150.} 598.977	^{-150.590} 8.977	-4.893	^{-40.} 347.698	^{-40.340} 7.698	+6.828	37.666314				61.294956
12	593.912	3.912	-0.172	347.880	7.880	-6.646	1.355360			25.999152	
11	598.805	8.805	+5.065	341.052	1.052	-0.182			5.328380	1.602570	
							39.021674	5.328380	27.601662		61.294956
							33.693294				33.693294
							x 1/2 = 16.846647				

面積計算書

工区 6 7 / 計算者 徳山 精算者 徳山 備考 1
2

点	①	②	③	④	⑤	⑥	③ X ⑤		② X ⑥	
	X	X - (定数)	X _{n-1} - X _{n+1}	Y	Y - (定数)	Y _{n-1} - Y _{n+1}	+	-	+	-
8	496.481	16.481	+37.771	301.223	1.223	-10.949	46.193933		180.450469	
13	527.095	47.095	+32.325	300.141	0.141	+48.993	4.557825		2307.325335	
16	528.806	48.806	-22.179	350.216	50.216	+50.931	1113.740664		2485.738386	
5	504.916	24.916	-29.148	351.072	51.072	-2.981	1488.646656		74.274596	
6	499.658	19.658	-15.592	347.235	47.235	+39.982	736.488120		785.966156	
7	489.324	9.324	-3.177	311.090	11.090	-46.012	35.232930		429.015888	
							3374.108079	50.751758	1469.707107	4793.063724
							3323.356612			3323.356612
							$\times \frac{1}{2} =$	1661.678306		
13	527.095	7.095	+28.652	300.141	10.141	-51.148	290.557932		362.895060	
14	557.458	37.458	+31.586	299.068	9.068	+49.003	286.421848		1835.554374	
15	558.681	38.681	-28.652	349.144	59.144	+51.148	1694.593888		1978.455788	
16	528.806	8.806	-31.586	350.216	60.216	-49.003	1701.982576		431.520418	
							3596.576464	576.981780	794.415478	3814.010162
							3019.594684			3019.594684
							$\times \frac{1}{2} =$	1509.797342		

面積計算書

工区 7077 / 計算者 徳山 精算書 徳山 備考 3

点	①	②	③	④	⑤	⑥	③ × ⑤	④ × ⑥		
	X	X - (定数)	X _{n-1} - X _{n+1}	Y	Y - (定数)	Y _{n-1} - Y _{n+1}	+	-		
14	⁻¹⁵⁰ 557.458	^{-150.550} 7.458	+32.267	⁻⁴⁰ 299.068	^{-40.290} 9.068	-57.259	292.597156	382.289622		
9	590.948	40.948	+40.393	297.885	7.885	+5.045	318.498805	206.582660		
10	597.851	47.851	+7.857	304.113	14.113	+43.167	110.885841	2065.584117		
11	598.805	48.805	-3.939	341.052	51.052	+43.767	201.093828	2136.048435		
12	593.912	43.912	-40.124	347.880	57.880	+8.092	2322.377120	355.335904		
15	558.681	8.681	-36.454	349.144	59.144	-48.812	2156.035376	423.736972		
							4679.506324	721.981802	806.026594	4763.551116
							3957.524522			3957.524522
						× 1/2 =	1778.762261			

BNO. 1 各筆面積計算書

画番 地号	地番	隅切	地積	摘要
1			1661.67	
2			1509.79	
3			1978.76	
	計		5150.22	
	全体		5150.19	
		計算者		点検者