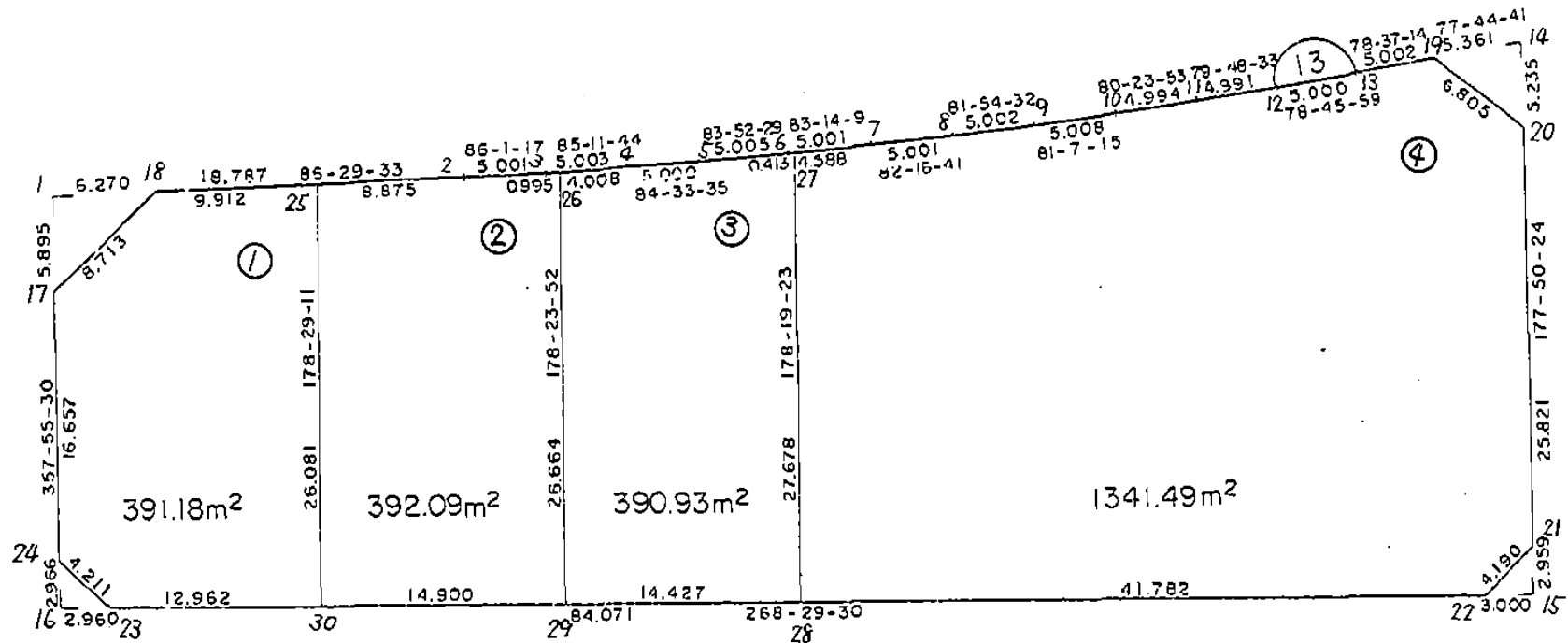


画地略図

街区番号

6-13

備考



記入者

点検者

面積計算書		工区	6	7077	13	計算者		精算書		備考	全体
点	①	2	3	4	5	6	3	5	2	6	
	X	X - (定数)	X <sub>n-1</sub> - X <sub>n+1</sub>	Y	Y - (定数)	Y <sub>n-1</sub> - Y <sub>n+1</sub>	+	-	+	-	
1	-150 546.026	-150.530 16.026	-27.034	-40 562.317	-40.470 92.317	-24.086			2495.697778	386.002236	
2	544.493	14.493	-1.880	537.307	67.307	-29.999			126.537160	434.775507	
3	544.146	14.146	-0.766	532.318	62.318	-9.974			47.735588	141.092209	
4	543.727	13.727	-0.893	527.333	57.333	-9.962			51.198369	136.748374	
5	543.253	13.253	-1.008	522.356	52.356	-9.953			52.774848	131.907109	
6	542.719	12.719	-1.123	517.380	47.380	-9.942			53.207740	126.452298	
7	542.130	12.130	-1.261	512.414	42.414	-9.922			53.484054	120.353860	
8	541.458	11.458	-1.376	507.458	37.458	-9.908			51.542208	113.525864	
9	540.754	10.754	-1.477	502.506	32.506	-9.900			48.011362	106.464600	
10	539.981	9.981	-1.606	497.558	27.558	-9.872			44.258148	98.532432	
11	539.148	9.148	-1.716	492.634	22.634	-9.836			38.839944	89.979728	
12	538.265	8.265	-1.857	487.722	17.722	-9.816			32.909754	81.129240	
13	537.291	7.291	-1.961	482.818	12.818	-9.808			25.136098	71.510128	
14	536.304	6.304	-2.125	477.914	7.914	-10.143			16.817250	63.941472	
15	535.166	5.166	+32.853	472.675	2.675	-6.521	87.881775			33.687486	
16	529.157	39.157	+36.361	471.393	1.393	+88.718	50.650873		3473.930726		
17	571.527	41.527	-23.131	561.393	91.393	+90.924			2114.011483	3775.800948	

$(2556.81) - (18.47 + 13.81 + 4.44 + 4.39) = 2515.70$

$\frac{138.532640}{2} = 2556.814568$   
 $\frac{5252.161784}{2} = 2626.080892$   
 $\frac{7249.731674}{2} = 3624.865837$   
 $\frac{2136.102538}{2} = 1068.051269$   
 $\frac{5113.629136}{2} = 2556.814568$

三和測量建設株式会社

面積計算書

工 区 6 7077 13 計算者 精算書 備考 1. スミ切 14. スミ切

点	①	②	③	④	⑤	⑥	⑧ X ⑤		⑨ X ⑥	
	X	X - (定数)	X <sub>n-1</sub> - X <sub>n+1</sub>	Y	Y - (定数)	Y <sub>n-1</sub> - Y <sub>n+1</sub>	+	-	+	-
1	-150 546.026	-150.540 6.026	-6.275	-40 562.317	-40.550 12.317	-6.045		77.289175		36.427170
18	545.642	5.642	+5.891	556.059	6.059	-0.213	35.693569			1.201746
17	551.917	11.917	+0.384	562.104	12.104	+6.258	4.647936		74.576586	
							40.341505	77.289175	74.576586	37.628916
								36.947670	36.947670	
								X/2 = 18.473835		
14	-150 535.166	-150.530 5.166	+4.093	-40 472.675	-40.470 2.675	-5.436	10.948775			28.082376
20	540.397	10.397	+1.138	472.478	2.478	+5.239	2.819964		54.469883	
19	536.304	6.304	-5.231	477.914	7.914	+0.177		41.398134	1.241888	
							13.768739	41.398134	55.711771	28.082376
								27.629395	27.629395	
								X/2 = 13.8146975		

# 面積計算書

工  
区

6

7  
0  
7  
7

13

計算者



精算書



備考

スミ切 15  
スミ切 16

点	①	②	③	④	⑤	⑥	⑦ X ⑧		⑨ X ⑩	
	X	X - (定数)	X <sub>n-1</sub> - X <sub>n+1</sub>	Y	Y - (定数)	Y <sub>n-1</sub> - Y <sub>n+1</sub>	+	-	+	-
15	-150 569.157	-150560 9.157	+3.036	-40 471.393	-40470 1.393	+2.887	4.229148			26.436259
22	569.236	9.236	-2.957	474.392	4.392	+0.112		12.987144		1.034432
21	566.200	6.200	-0.079	471.505	1.505	-2.999		0.118895		18.593800
							4.229148	13.106039		27.470691
								8.876891		18.876891
								X <sup>1</sup> / <sub>2</sub> =		4.4384455
16	-150 571.527	-150560 11.527	-2.886	-40 561.393	-40550 11.393	+3.066		32.880198		25.341782
24	568.563	8.563	-0.078	561.500	11.500	-2.959		0.897000		25.337917
23	571.449	11.449	+2.964	558.434	8.434	-0.107	24.998376			1.225043
							24.998376	33.777198		35.341782
								8.778822		18.778822
								X <sup>1</sup> / <sub>2</sub> =		4.389411

面積計算書

工 区	6	7 ロ 7 7	13	計 算 者		精 算 書		備 考	/
--------	---	------------------	----	-------------	--	-------------	--	--------	---

点	①	②	③	④	⑤	⑥	⑧	⑨	⑩	⑪	⑫	
	X	X - (定数)	X <sub>n-1</sub> - X <sub>n+1</sub>	Y	Y - (定数)	Y <sub>n-1</sub> - Y <sub>n+1</sub>	+	-	+	-		
18	-150 545.642	-150.540 5.642	-6.881	-40 556.059	-40.540 16.059	-15.939			110.501979		89.927838	
25	545.036	5.036	+25.466	546.165	6.165	-10.583	156.997890				53.295988	
30	571.108	31.108	+26.413	545.476	5.476	+12.269	144.637588			381.664052		
33	571.449	31.449	-25.445	558.434	18.434	+16.024			46.914530	503.938776		
24	568.563	28.563	-19.532	561.500	21.500	+3.670			419.938000	104.826210		
17	551.917	11.917	-22.921	562.104	22.104	-5.441			506.645784		64.840397	
									301.635478	1084.000293	990.429038	208.064223
										782.364815	782.364815	
										$\times \frac{1}{2} =$	391.1824075	

面積計算書

工 区 6 7077 13 計算者 精算書 備考 2

点	①	②	③	④	⑤	⑥	⑧	⑨	⑩	⑪	⑫
	X	X - (定数)	X <sub>n-1</sub> - X <sub>n+1</sub>	Y	Y - (定数)	Y <sub>n-1</sub> - Y <sub>n+1</sub>	+	-	+	-	
25	-150 545.036	-150.540 5.036	-26.615	-40 546.165	-40530 16.165	-8.169		430.231475			41.139084
2	544.493	4.493	-0.890	537.307	7.307	-13.847		6.503230			62.214571
3	544.146	4.146	-0.430	532.318	2.318	-5.980		0.996740			24.793080
26	544.063	4.063	+26.570	531.327	1.327	-1.737	35.258390				7.057431
29	570.716	30.716	+27.045	530.581	0.581	+14.149	15.713145				434.600684
30	571.108	31.108	-25.670	545.476	15.476	+15.584		397.423680			484.787072
								50.971535	835.155125	1919.387756	135.204166
									784.183590	784.183590	
									$\times \frac{1}{2} =$	392.091795	

面積計算書

工  
区

6

7  
0  
7  
7

13

計  
算  
者



積  
算  
書



備  
考

3.

点	①	②	③	④	⑤	⑥	⑦ × ⑧		⑨ × ⑩	
	X	X - (定数)	X <sub>n-1</sub> - X <sub>n+1</sub>	Y	Y - (定数)	Y <sub>n-1</sub> - Y <sub>n+1</sub>	+	-	+	-
26	-150 544.063	-150 540 4.063	-26.989	-40 531.327	40 510 21.327	-3.248		575.594403		13.196624
4	543.727	3.727	-0.810	527.333	17.333	-8.971		14.039730		33.434917
5	543.253	3.253	-1.008	522.356	12.356	-9.953		12.454848		32.377109
6	542.719	2.719	-0.583	517.380	7.380	-5.386		4.302540		14.644534
27	542.670	2.670	+27.617	516.970	6.970	-1.220	192.490490			3.257400
28	570.336	30.336	+28.046	516.160	6.160	+13.611	172.763360		412.903296	
29	570.716	30.716	-26.273	530.581	20.581	+15.167		540.724613	1465.869572	
							365.253850	1147.116134	4878.772868	96.910584
								781.862284	781.862284	
							$\times \frac{1}{2} =$	390.931142		

# 面積計算書

工区 6 フロップ 13 計算者 精算書 備考 4.

点	①	②	3	4	⑤	⑥	③	×	5	2	×	⑥
	X	X - (定数)	X <sub>n-1</sub> - X <sub>n+1</sub>	Y	Y - (定数)	Y <sub>n-1</sub> - Y <sub>n+1</sub>	+	-	+	-	+	-
27	-150 542.670	-150.530 12.670	-28.206	-40 516.970	-40.470 46.970	-3.746			1324.835820			47.461820
7	542.130	12.130	-1.212	512.414	42.414	-9.512			51.405768			115.380560
8	541.458	11.458	-1.376	507.458	37.458	-9.908			51.542208			113.525864
9	540.754	10.754	-1.477	502.506	32.506	-9.900			48.011362			106.464600
10	539.981	9.981	-1.606	497.558	27.558	-9.872			44.258148			98.532432
11	539.148	9.148	-1.716	492.634	22.634	-9.836			38.839944			89.97728
12	538.265	8.265	-1.857	487.722	17.722	-9.816			32.909754			81.129240
13	537.291	7.291	-1.961	482.818	12.818	-9.808			25.136098			71.510128
19	536.304	6.304	+3.106	477.914	7.914	-10.340	24.580884					65.183360
20	540.397	10.397	+9.896	472.478	2.478	-6.409	74.082288					66.634373
21	566.200	36.200	+28.839	471.505	1.505	+1.914	43.402695			69.286800		
22	569.236	39.236	+4.136	474.392	4.392	+44.655	18.165312			1752.083580		
28	570.336	40.336	-26.566	516.160	46.160	+42.578			1226.286560	1717.426208		
							160.231179		2843.225662	3538.796588		855.802105
									2682.994483	2682.994483		
							X/2 =		1341.4972415			



BNO. 13 各筆面積計算書

画番 地号	地番	隅切	地積	摘要
1			391.18	
2			392.09	
3			390.93	
4			1341.49	
	計		2515.69	
	全 体		2515.70	
		計算者	点検者	