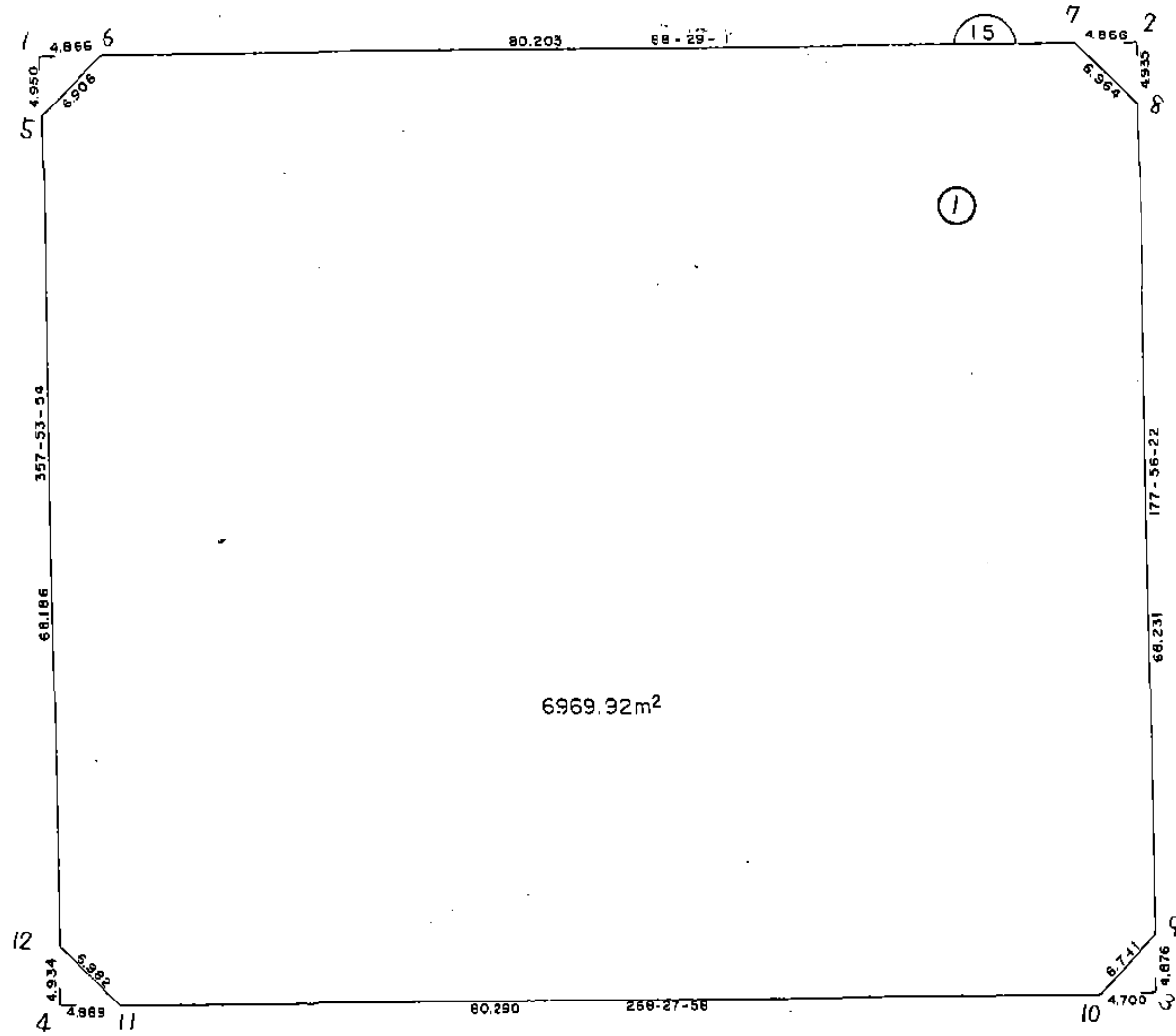


画地略図

街区番号

6-15

備考



記入者

点検者

面積計算書

工区

6

7077

18

計算者



精算者



備考

全体

点	①	②	③	④	⑤	⑥	⑦ × ⑧		⑨ × ⑩	
	X	X - (定数) -180.620	X <sub>n-1</sub> - X <sub>n+1</sub>	Y	Y - (定数) -20.450	Y <sub>n-1</sub> - Y <sub>n+1</sub>	+	-	+	-
1	-150.624.477	4.477	-80.398	-40.549.412	109.412	-87.041	8.796.505976			389.247352
2	622.092	2.092	+75.612	469.508	19.508	-92.710		1.476.038896		192.949320
3	700.084	80.084	+80.398	466.707	16.707	+87.041		1.542.807396		6.970.591440
4	702.490	82.490	-75.612	556.549	106.549	+92.710		8.056.382988		7.647.647900
								16.852.888944		14.618.2393440
								11.035.042672		14.035.042672
								× 1/2 = 7.017.521236		
										7017.52 - (12.04 + 12.00 + 11.45 + 12.06) = 6969.97

面積計算書

工  
区

6

フ  
ロ  
ッ  
ク

15

計  
算  
者



精  
算  
書



備  
考

スミキリ

1

2

点	①	②	③	④	⑤	⑥	③	⑤	②	⑥
	X	X - (定数) X <sub>n-1</sub> - X <sub>n+1</sub>	Y	Y - (定数) Y <sub>n-1</sub> - Y <sub>n+1</sub>	+	-	+	-	+	-
1	-150.674.472	-150.620 4.472	110.559.412	9.412	-4.682	47.784.724			20.937.904	
6	624.344	4.344 + 4.948	554.548	4.548	-0.182		22.503.504		0.790.476	
5	629.470	9.470 + 0.129	559.220	9.220	+ 4.864		1.190.670		45.818.880	
						47.784.724	23.694.170		21.728.328	45.818.880
						24.090.660				24.090.660
										x 1/2 = 12.045.270
2	-150.622.092	-150.620 2.092	110.469.508	9.508	-5.042		45.666.970		10.547.864	
8	627.070	7.070 + 0.129	469.330	9.330	+ 4.865		1.203.699		34.171.760	
7	622.221	2.221 - 4.922	474.373	14.373	+ 0.177		70.887.636		0.393.117	
						70.887.636	46.870.623		10.547.864	34.564.871
						24.017.013				24.017.013
										x 1/2 = 12.008.506

面積計算書

工区 6 フロック 1f 計算者  精算書  備考 スミエリ ㍶

順	①	②	③	④	⑤	⑥	③	⑤	②	⑥
	X	X - (定数)	X <sub>n-1</sub> - X <sub>n+1</sub>	Y	Y - (定数)	Y <sub>n-1</sub> - Y <sub>n+1</sub>	+	-	+	-
㍶	-150.700.084	-150.690 10.084	+ 4.999	40.466.707	-40.460 6.707	+ 4.624		㍶.503.298		45.6099.32
10	700.210	10.210	-4.873	471.400	11.400	+ 0.175	66.552.200			1.786.760
9	696.211	5.211	-0.126	466.877	6.877	-11.698	0.866.502		74.481.278	
							66.418.702	㍶.503.298	74.481.278	47.396.682
							72.915.404			22.915.404
							x 1/2 = 11.457.702			
11	-150.702.490	-150.690 17.490	-4.801	440.556.518	-40.550 6.549	+ 5.069	31.441.749			63.311.810
12	697.558	7.558	-0.121	556.730	6.730	-4.888	0.881.630		36.943.604	
11	702.359	17.359	+ 4.932	551.661	1.661	-0.181		8.192.052	7.726.979	
							32.323.379	8.192.052	39.180.483	63.311.810
							74.131.327			74.131.327
							x 1/2 = 12.065.663.5			

面積計算書

工  
区

6

フ  
ロ  
ック

15

計  
算  
者



精  
算  
者



備  
考

点	①	②	③	④	⑤	⑥	③ × ⑤		② × ⑥	
	X	X - (定数)	X <sub>n-1</sub> - X <sub>n+1</sub>	Y	Y - (定数)	Y <sub>n-1</sub> - Y <sub>n+1</sub>	+	-	+	-
8	-150.627.074	-150.620 7.074	+72.990	440.469.331	-40.280 9.331	-7.496			681.069.690	62.651.904
9	695.211	75.211	+72.186	466.877	6.877	+2.069			503.300.127	155.611.559
10	700.210	80.210	+7.148	471.400	11.400	+94.784			81.487.200	6.800.524.640
11	702.359	82.359	-2.652	551.661	91.661	+85.330	243.084.978			7.027.693.470
12	697.558	77.558	-72.939	556.730	96.730	+7.569	7.055.389.470			687.036.508
5	629.420	9.420	-73.215	549.230	99.230	-2.187	7.265.124.450		20.554.440	
6	624.343	4.343	-7.199	554.548	94.548	-84.857	680.651.052		268.533.951	
7	622.221	2.221	+2.681	474.370	14.370	-85.217		28.534.012	189.266.957	
							15.744.249.944	1.304.391.024	621.007.258	14.570.866.171
							13.939.858.919			13.939.858.919
							× 1/2 = 6.969.929.459			
							= 6.969.92			

BN0. 15 各筆面積計算書

画番 地号	地番	隅切	地積	摘要
1			6969 92	一筆
		計算者	点検者	