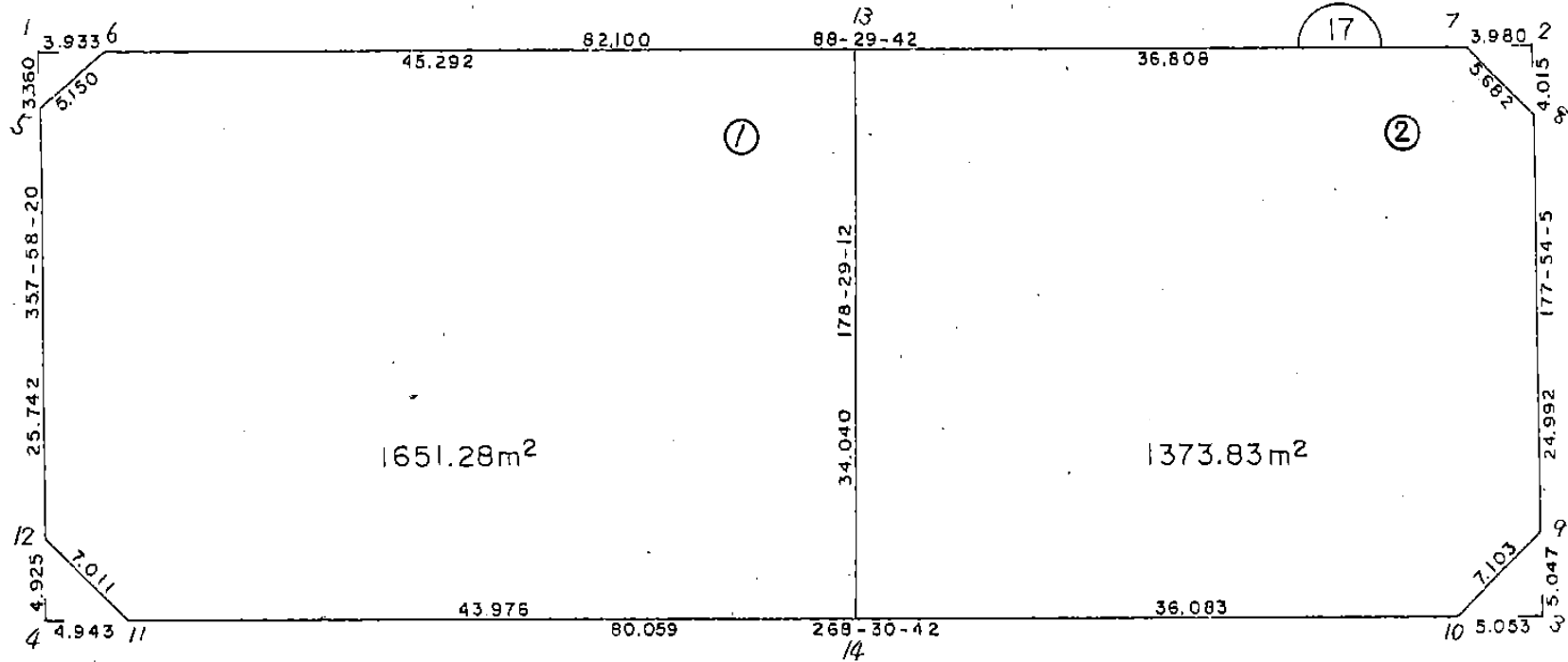


画地略図

街区番号

6-17

備考



記入者 _____ 点検者 _____

面積計算書

工
区

6

7
0
7
7

17

計
算
者



精
算
書



備
考

全体



点	(1)	(2)	3	4	(5)	(6)	(7)	(8)	(9)	(10)
	X	X - (定数)	X _{n-i} - X _{n+1}	Y	Y - (定数)	Y _{n-i} - Y _{n+1}	+	-	+	-
1	-150 758.377	-150 750 8.377	-36.370	-40 554.564	-40 460 94.564	-88.778		3439.292680		743.693306
2	756.013	6.013	+31.667	464.582	4.582	-91.229	145.098194			543.559977
3	790.044	40.044	+36.370	463.335	3.335	+88.778	121.293950		3555.026232	
4	792.383	42.383	-31.667	553.360	93.360	+91.229		2956.431120	3866.558707	
								266.792144	16395.723800	17421.584939
									6129.331656	6129.331656
									$\times \frac{1}{2} =$	3064.665828
										$(3064.66) - (6.60 + 7.98 + 12.75 + 12.17) = 3025.16$

面積計算書

工区 6 フロップ 17 計算者  精算書  備考 スミ切 1.
スミ切 2.

点	①	②	3	4	⑤	⑥	③ × ⑤		② × ⑥	
	X	X - (定数)	X _{n-1} - X _{n+1}	Y	Y - (定数)	Y _{n-1} - Y _{n+1}	+	-	+	-
1	-150 758.377	-150.750 8.377	-3.461	-40 554.564	-40.550 4.564	-3.813		15.796004		32.941501
6	758.274	8.274	+3.358	550.632	0.632	-0.119	2.122256	0		0.984606
5	761.735	11.735	+0.103	554.445	4.445	+3.932	0.457835		46.142020	
							2.580091	15.796004	46.142020	32.926107
								13.215913	13.215913	
							× 1/2 = 6.6079565			
2	-150 756.013	-150.750 6.013	+3.907	-40 464.582	-40.460 4.582	-4.126	17.901874			24.809638
8	760.025	10.025	+0.105	464.435	4.435	+3.979	0.465675		39.889475	
7	756.118	6.118	-4.012	468.561	8.561	+0.147		34.346732	0.899346	
							18.367549	34.346732	40.788821	24.809638
								15.979183	15.979183	
							× 1/2 = 7.9895915			

面積計算書

工区 6 フロア 17 計算者  精算書  備考 25173.
25174.

点	①	②	③	④	⑤	⑥	⑧	⑨	⑩	⑪
	X	X - (定数)	X _{n-1} - X _{n+1}	Y	Y - (定数)	Y _{n-1} - Y _{n+1}	+	-	+	-
3	-150 790.044	-150780 10.044	+5.175	-40 463.335	-40460 3.335	+4.866	17.258625		48.874104	
10	790.175	10.175	-5.044	468.386	8.386	+0.185		42.298984	1.882375	
9	785.000	5.000	-0.131	463.520	3.520	-5.051		0.461120		25.255000
							17.258625	42.760104	150.756479	25.255000
								25.501479	25.501479	
							$\times \frac{1}{2}$	12.7507395		
4	-150 792.383	-150780 12.383	-4.794	-40 553.360	-40540 13.360	+5.116		64.047840	63.351428	
12	787.461	7.461	-0.128	553.534	13.534	-4.942		1.732352		36.872262
11	792.255	12.255	+4.922	548.418	8.418	-0.174	41.433396			2.132370
							41.433396	65.780192	63.351428	39.004632
								24.346796	24.346796	
							$\times \frac{1}{2}$	12.173398		

面積計算書

工
区

6

フ
ロ
ック

17

計
算
者



精
算
書



備
考

1.

点	①	②	3	4	⑤	⑥	③	X	5	2	X	6
	X	X - (定数)	X _{n-1} - X _{n+1}	Y	Y - (定数)	Y _{n-1} - Y _{n+1}	+	-	+	-		
6	-150 758.274	-150750 8.274	-4.651	-40 550.632	-40500 50.632	-49.089			235.489432			406.162386
13	757.084	7.084	+32.838	505.356	5.356	-46.175	175.880328					327.103700
14	791.112	41.112	+35.171	504.457	4.457	+43.062	156.757147			1770.364944		
11	792.255	42.255	-3.651	548.418	48.418	+49.077		176.774118	2073.748635			
12	787.461	37.461	-30.520	553.534	53.534	+6.027		1633.857680	225.777447			
5	761.735	11.735	-29.187	554.445	54.445	-2.902		1589.086215				34.054970
								332.637475	3635.207445	4069.891026		767.321056
									3302.569970	3302.569970		
								X/2 =	1651.284985			

面積計算書

工
区

6

7
ロ
ッ
7

17

計
算
者



精
算
書



備
考

2.

点	①	②	③	④	⑤	⑥	⑦ X ⑧		⑨ X ⑩		
	X	X - (定数)	X _{n-1} - X _{n+1}	Y	Y - (定数)	Y _{n-1} - Y _{n+1}	+	-	+	-	
13	-150 757.0844	-150 750 7.084	-34.994	-40 505.356	-40 460 45.356	-35.896			1587.187864	254.287264	
7	756.118	6.118	+2.941	468.561	8.561	-40.921	25.177901			250.354678	
8	760.025	10.025	+28.882	464.435	4.435	-5.041	128.091670			50.536025	
9	785.000	35.000	+30.150	463.520	3.520	+3.951	106.128000			138.285000	
10	790.175	40.175	+6.112	468.386	8.386	+40.937	51.355232			164.643975	
14	791.112	41.112	-33.091	504.457	44.457	+36.970		1471.126587	1519.910640		
								310.652803	3058.314451	3302.837615	4555.177967
									2747.661648	2747.661648	
								$\frac{Y}{2} =$	1373.830824		

