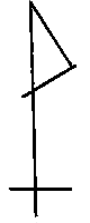
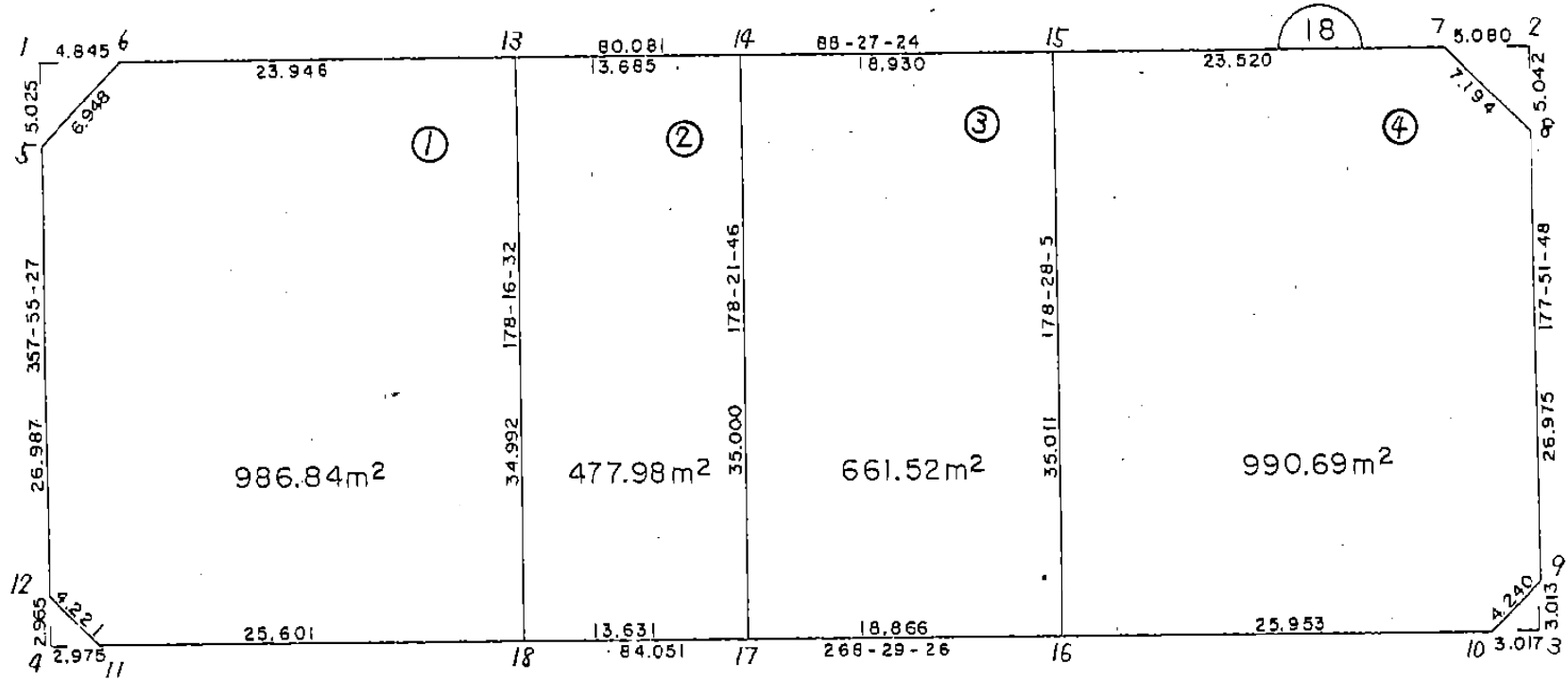


画地略図

街区番号

6-18

備考



記入者

点検者





# 面積計算書

工区 6 7077 18 計算者 (徳山) 精算書 (徳山) 備考 スミナリ / スキマ 2

点	①	②	3	4	⑤	⑥	③ X ⑤		② X ⑥	
	X	X - (定数)	X <sub>n-1</sub> - X <sub>n+1</sub>	Y	Y - (定数)	Y <sub>n-1</sub> - Y <sub>n+1</sub>	+	-	+	-
1	-150. 804.459%	-150.800 4.459%	-5.152%	-40. 552.895%	-40.540 12.895%	-4.661%	66.435040%		20.783399%	
6	804.329%	4.329%	+5.022%	548.052%	8.052%	-0.182%		40.437144%	0.787878%	
5	809.481%	9.481%	+0.130%	552.713%	12.713%	+4.843%		1.652690%		45.916483%
							66.435040%	42.089834%	21.571277%	45.916483%
							24.345206%			24.345206%
							x/2 =	12.172603%		
2	-150. 802.035%	-150.800 2.035%	+4.901%	-40. 462.922%	-40.460 2.922%	-5.266%		14.320722%	10.716310%	
8	807.073%	7.073%	+0.137%	462.734%	2.734%	+5.078%		0.374558%		35.716694%
7	802.172%	2.172%	-5.038%	468.000%	8.000%	+0.188%	40.304000%			0.408336%
							40.304000%	14.695280%	10.716310%	36.325030%
							25.608720%			25.608720%
							x/2 =	12.804360%		

面積計算書

工区	6	フロッツ	18	計算者		精算書		備考	スミキリ3 スミキリ4
----	---	------	----	-----	---	-----	---	----	----------------

点	①	②	③	④	⑤	⑥	③	⑤	②	⑥
	X	X - (定数)	X <sub>n-1</sub> - X <sub>n+1</sub>	Y	Y - (定数)	Y <sub>n-1</sub> - Y <sub>n+1</sub>	+	-	+	-
3	-150, 837.04%	-150,830 7.041%	+3.090% 461.616%	-40, 1.616%	-40,460 +2.904%			4.993440%		20.447064%
10	837.120%	7.120%	-3.011% 464.632%	4.632%	+0.112% 13.946952%					0.797440%
9	834.030%	4.030%	-0.079% 461.728%	1.728%	-3.016% 0.136512%				12.154480%	
							14.083464%	4.993440%	12.154480%	21.244504%
							9.090024%			9.090024%
							×1/2 = 4.545012%			
4	-150, 839.413%	-150,830 9.413%	-2.885% 551.628%	-40, 11.628%	-40,540 +3.081%			33.546780%		29.001453%
12	836.450%	6.450%	-0.078% 551.735%	11.735%	-2.974% 0.915330%				19.182300%	
11	839.335%	9.335%	+2.963% 548.654%	8.654%	-0.107% 25.641802%			25.641802%	20.998845%	
							34.462110%	25.641802%	20.181145%	29.001453%
							8.820308%			8,820308%
							×1/2 = 4.410154%			

面積計算書

工  
区

6

フ  
ロ  
ツ  
ク

18

計  
算  
者



精  
算  
書



備  
考

1  
2

点	①	②	3	4	5	⑥	③	X	5	2	X	⑥
	X	X - (定数)	X <sub>n-i</sub> - X <sub>n+1</sub>	Y	Y - (定数)	Y <sub>n-i</sub> - Y <sub>n+1</sub>	+	-	-	+	-	
6	-150.800 804.329	-150.800 4.329	-5.797	-40.520 548.052	-40.520 28.052	-28.578	162.617444			123.800742		
13	803.684	3.684	+34.831	524.115	4.115	-24.990		141.272065		92.063160		
18	838.660	38.660	+35.651	523.062	3.062	+24.539		109.163362			948.677740	
11	839.335	39.335	-2.210	548.654	28.654	+28.673	63.325340					1127.852455
12	836.450	36.450	-29.854	551.735	31.735	+4.059	947.416690					147.950550
5	809.481	9.481	-32.121	552.713	32.713	-3.683	1050.774273			34.918523		
							2224.133747	250.435427	250.782425	2224.480745		
							1973.698320					1973.698320
							x <sub>1/2</sub> = 986.849160					
13	-150.800 803.684	-150.800 3.684	-35.345	-40.520 524.115	-40.520 24.115	-12.627	852.344675			46.517868		
14	803.315	3.315	+34.617	510.435	10.435	-14.680		361.228395		48.664200		
17	838.301	38.301	+35.345	509.435	9.435	+12.627		333.480075			483.626727	
18	838.660	38.660	-34.617	523.062	23.062	+14.680	798.337254					567.528800
							1650.681929	1674.708470	95.182068	1051.155527		
							955.973459					955.973459
							x <sub>1/2</sub> = 477.9867295					

面積計算書

工  
区

6

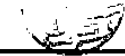
7  
0  
7  
2

18

計算者



精算書



備考

3  
4

点	①	②	3	4	⑤	⑥	③	X	5	②	X	⑥
	X	X - (定数)	X <sub>n-1</sub> - X <sub>n+1</sub>	Y	Y - (定数)	Y <sub>n-1</sub> - Y <sub>n+1</sub>	+	-	+	-	+	-
14	-150. 803.315	-150.800 3.315	-35.495	-40. 510.435	-40.490 20.435	-17.923	1725.340325					59.414745
15	802.806	2.806	+34.489	491.512	1.512	-19.859		52.147368				55.724354
16	837.804	37.804	+35.495	490.576	0.576	+17.923		20.445120				677.561092
17	838.307	38.307	-34.489	509.435	19.435	+19.859	670.293715					760.619559
							1395.634040	72.592488	115.139099			1438.180657
							1323.041552					1323.041552
							x/2 = 661.520776					
15	-150. 802.806	-150.800 2.806	-35.632	-40. 491.512	-40.460 31.512	-22.576	1122.835584					63.348256
7	802.172	2.172	+4.267	468.000	8.000	-28.778		34.136000				62.505816
8	807.073	7.073	+31.858	462.734	2.734	-6.272		87.099772				44.361856
9	834.030	34.030	+30.047	461.728	1.728	+1.898		51.921216				64.588940
10	837.120	37.120	+3.774	464.632	4.632	+28.848		17.481168				1070.837760
16	837.804	37.804	-34.314	490.576	30.576	+26.880	1049.184864					1016.171520
							2172.020448	190.638156	170.215928			2151.598220
							1981.382292					1981.382292
							x/2 = 990.691146					

