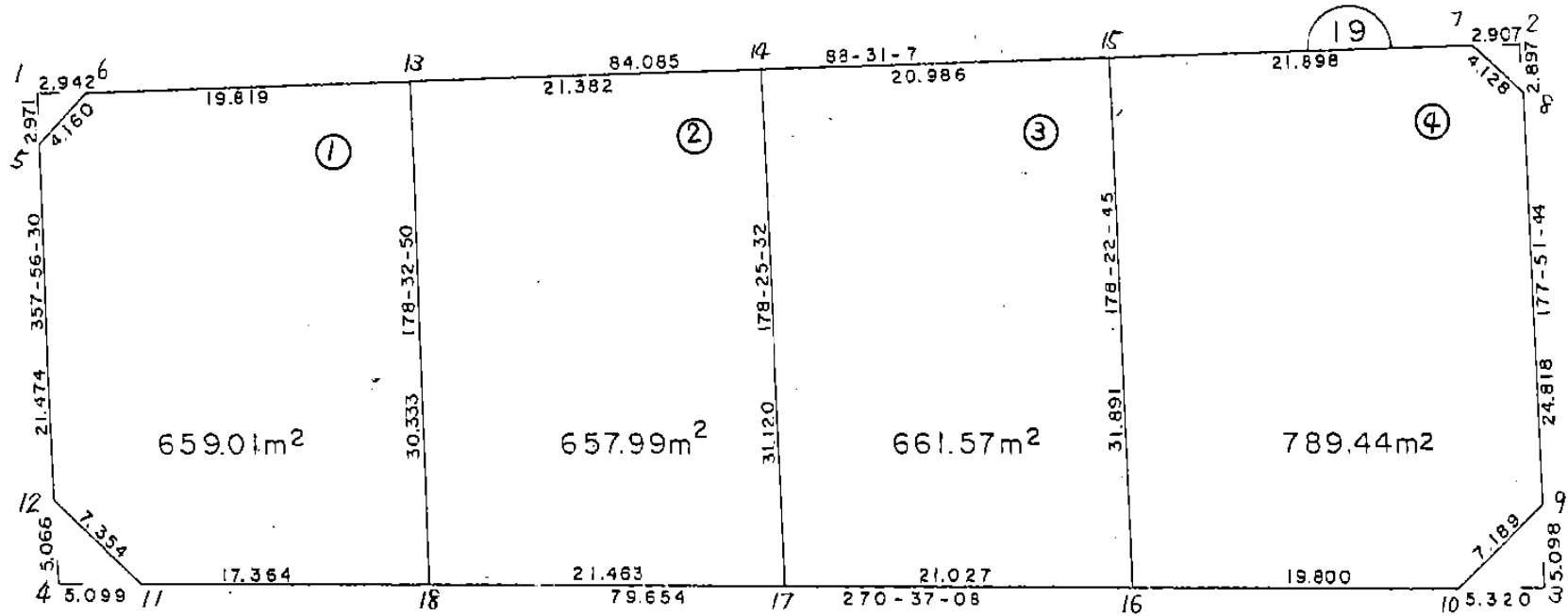


画地略図

街区番号

6-19

備考



記入者

点検者



面積計算書

工  
区

6

フ  
ロ  
フ  
ク

19

計  
算  
者



精  
算  
書



備  
考

スミキリ

2

点	①	②	③	④	⑤	⑥	③	⑤	②	⑥
	X	X - (定数)	X <sub>n-1</sub> - X <sub>n+1</sub>	Y	Y - (定数)	Y <sub>n-1</sub> - Y <sub>n+1</sub>	+	-	+	-
1	-150.845.446	-150.840 5.446	-2.045	-40.551.380	11.380	-2.824	34.657100		15.423964	
6	845.370	5.370	+2.969	548.439	8.439	-0.107		25.065391	0.574590	
5	848.445	8.445	+0.076	551.273	11.273	+2.941		0.856748		24.748515
							34.657100	25.912129	16.008554	24.748515
							8.729961			8.729961
							x 1/2 = 4.3699805			
2	-150.843.121	-150.840 3.121	+2.870	-40.461.476	1.476	-2.014		11.162320	9.406694	
8	846.016	6.016	+0.075	461.368	1.368	+2.906		0.102600		17.482496
7	843.196	3.196	-2.895	464.382	4.382	+0.108	12.685890			0.245168
							12.685890	4.264920	19.406694	17.827664
							8.470970			8.470970
							x 1/2 = 4.235485			

面積計算書

工区

6

ブロック

19

計算者



精算書



備考

スミカリ

ウ

点	①	②	③	④	⑤	⑥	③ × ⑤		② × ⑥	
	X	X - (定数)	X <sub>n-1</sub> - X <sub>n+1</sub>	Y	Y - (定数)	Y <sub>n-1</sub> - Y <sub>n+1</sub>	+	-	+	-
8	-150.874.911	-150.870	+ 6.037	40.460.767	-40.460	+ 6.130		1.269.324		40.324.580
10	876.854	6.854	- 6.094	466.572	6.572	+ 0.190	78.383.768			1.112.260
9	870.817	0.817	+ 0.057	460.442	0.442	- 6.320		0.076.194	4.246.410	
							78.383.768	1.294.518	4.246.410	31.435.690
							27.089.260			27.089.260
										x 1/2 = 13.544.625
4	-150.874.938	-150.860	- 6.118	40.550.320	-40.540	+ 6.281	52.817.760			78.887.578
12	869.875	9.875	+ 0.055	560.502	10.502	- 6.099		0.577.610	50.352.625	
11	874.993	14.993	+ 6.063	546.221	6.221	- 0.182		76.433.920	2.728.726	
							52.817.760	27.011.500	50.081.051	78.887.578
							26.806.227			26.806.227
										x 1/2 = 12.903.113

面積計算書

工区

6

フコック

19

計算者



精算書



備考

1  
2

点	①	②	3	4	⑤	⑥	③	X	5	2	X	⑥
	X	X - (定数)	X <sub>n-1</sub> - X <sub>n+1</sub>	Y	Y - (定数)	Y <sub>n-1</sub> - Y <sub>n+1</sub>	+		-	+		-
6	-150.844.370	-150.840 5.370	-3.517	-40.548.439	28.439	-27.646	101.157.573				121.609.020	
13	844.858	4.858	+29.811	528.627	8.627	-70.581				257.179.197	99.987.498	
18	875.181	35.181	+30.135	527.858	7.858	+16.594				206.800.831	583.793.514	
11	874.993	34.993	-5.306	545.221	25.221	+22.644	133.822.626				792.381.497	
12	869.875	29.875	-26.578	540.502	30.502	+2.052	810.682.156				180.803.500	
5	848.415	8.415	-24.505	551.273	31.273	-2.063	766.344.865				17.360.145	
							1.812.007.170	419.398.032	38.951.663	1.566.978.505		
							1.318.026.843				1.318.026.843	
							x 1/2 = 65.901.342.152					
13	-150.844.858	-150.840 4.858	-30.876	-40.528.627	28.627	-20.606	883.887.282				100.103.948	
14	844.305	4.305	+30.555	507.252	7.252	-22.230				221.584.866	95.700.150	
17	875.413	35.413	+30.876	506.397	6.397	+20.606				197.510.772	729.720.278	
18	875.181	35.181	-30.555	527.858	27.858	+22.230	851.201.190				782.073.630	
							1.735.088.112	419.098.632	195.804.098	1.511.793.908		
							1.315.989.810				1.315.989.810	
							x 1/2 = 657.994.905					

# 面積計算書

工  
区

6

フ  
コ  
ク

19

計  
算  
者



精  
算  
書



備  
考

5  
4

点	①	②	3	4	⑤	⑥	③	X	5	②	X	6
	X	X - (定数)	X <sub>n-1</sub> - X <sub>n+1</sub>	Y	Y - (定数)	Y <sub>n-1</sub> - Y <sub>n+1</sub>	+	-	+	-	+	-
14	-150.844.308"	-150.840 4.308"	-31.651"	-40.507.252"	27.252"	-20.124"	862.55052"			88.633.820"		
15	843.762"	3.762"	+31.325"	486.273"	6.273"	-21.881"		196.56445"		82.316.222"		
16	875.640"	3.640"	+31.651"	485.371"	5.371"	+20.124"		169.997.521"		717.219.360"		
17	875.413"	3.413"	-31.325"	506.397"	26.397"	+21.881"		847.149.998"		774.871.868"		
								1.209.703.007"		1.492.091.213"		
								1.323.141.071"		1.323.141.071"		
								x 1/2 = 661.570.535"				
15	-150.843.762"	-150.840 3.762"	-22.444"	-40.486.273"	26.273"	-20.989"	852.401.212"			78.960.118"		
7	843.196"	3.196"	+22.544"	464.382"	11.382"	-24.904"		9.877.028.79.596.380"				
8	846.016"	3.016"	+22.221"	461.368"	1.368"	-2.940"		37.785.528.12.70.3040"				
9	870.817"	3.817"	+29.838"	460.442"	0.442"	+4.204"		13.182.296"		129.554.668"		
10	875.854"	3.854"	+4.823"	464.572"	4.572"	+24.929"		26.872.764"		893.804.366"		
16	875.640"	3.640"	-22.092"	485.371"	25.371"	+20.701"	814.201.322"			737.783.640"		
								1.666.607.344"		1.761.142.674"		
								1.578.887.636"		1.578.887.636"		
								x 1/2 = 789.443.818"				

