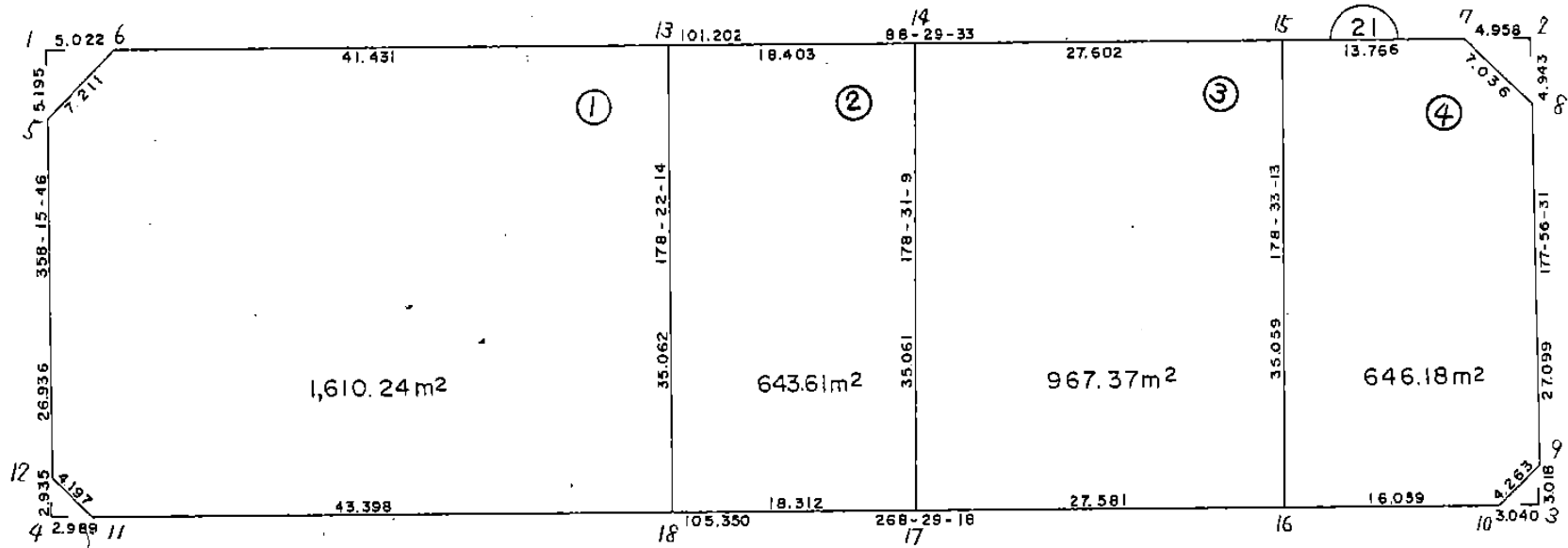


画地略図

街区番号



6-21

備考



記入者

点検者

面積計算書		工区	6	7 ロ ツ 2	21	計算者		精算書		備考	全体
点	①	②	③	④	⑤	⑥	⑦	⑧	⑨	⑩	⑪
	X	X - (定数)	X <sub>n-1</sub> - X <sub>n+1</sub>	Y	Y - (定数)	Y <sub>n-1</sub> - Y <sub>n+1</sub>	+	-	+	-	
1	-160.807.612	-150.800 7.612	-37.975	-40.674.011	-40.580 114.011	-110.081	4.379.681610				837.936.672
2	-804.687	4.687	+32.112	562.870	2.870	-112.403		92.161440			526.832861
3	839.724	39.724	+37.975	561.611	1.611	+110.081		61.177775			4.372.857644
4	842.662	42.662	-32.112	672.951	112.951	+112.403	3.627.082518				4.795.336786
											7.856.764167
											7.803.421997
											$\times \frac{1}{2} = 3,901.7124985$
											$= 3,901.71$
											$(3,901.71) - (13.04 + 12.26 + 4.59 + 4.39) = 3,867.43$
											34.28

# 面積計算書

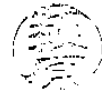
工  
区

6

フ  
ロ  
ッ  
ク

21

計  
算  
者



精  
算  
書



備  
考

スミキリ

1  
2

点	①	②	③	④	⑤	⑥	⑦ × ⑧		⑨ × ⑩	
	X	X - (定数) -150.800	X <sub>n-1</sub> - X <sub>n+1</sub>	Y	Y - (定数) -40.680	Y <sub>n-1</sub> - Y <sub>n+1</sub>	+	-	+	-
1	-150.807.612	7.612	- 6.325	-40.674.011	14.014	- 11.863	711.624.550			37.017.156
6	807.480	7.480	+ 6.194	668.994	8.994	- 0.167		46.705.847		1.174.360
5	812.805	12.805	+ 0.132	673.857	13.857	+ 6.020			1.829.124	64.281.100
							711.624.550	48.534.966	38.191.516	64.281.100
							26.089.584			26.089.584
										$\times \frac{1}{2} = 13.044.792$
2	-150.804.687	4.687	+ 4.810	-40.612.870	2.870	- 6.136		13.804.700		24.067.746
8	809.627	9.627	+ 0.130	562.692	2.692	+ 4.957		0.349.960		47.721.039
7	804.817	4.817	- 11.940	567.827	7.827	+ 0.178		38.665.280		0.857.426
							38.665.280	14.154.660	24.067.746	48.578.465
							24.510.720			24.510.720
										$\times \frac{1}{2} = 12.255.360$

面積計算書

工  
区

6

フ  
ロ  
ック

21

計  
算  
者



精  
算  
書



備  
考

スミキリ 3  
4

点	①	②	③	④	⑤	⑥	③	⑤	②	⑥
	X	X - (定数)	X <sub>n-1</sub> - X <sub>n+1</sub>	Y	Y - (定数)	Y <sub>n-1</sub> - Y <sub>n+1</sub>	+	-	+	-
8	-150.829.724	-150.830 9.724	+ 0.096	-40.561.611	-40.560 1.611	+ 2.931		4.987656		28.501044
10	829.804	9.804	- 0.016	564.650	4.650	+ 0.108	14.024400			1.058832
9	826.708	6.708	- 0.080	561.719	1.719	- 0.049	0.137520		20.385612	
							14.161920	4.987656	20.385612	29.559876
							9.174264			9.174264
							× 1/2 = 4.587132			
4	-150.842.662	-150.830 12.662	- 2.844	-40.672.951	-40.660 12.951	+ 0.077	36.975108			28.960974
12	829.728	9.728	- 0.079	672.040	12.040	- 2.988	1.030160		29.067264	
11	842.582	12.582	+ 2.934	669.962	9.962	- 0.089			29.231442	1.119887
							38.005265	29.231442	40.187151	28.960974
							8.772822			8.772822
							× 1/2 = 4.386911			

# 面積計算書

工  
区

6

フ  
ロ  
ツ  
ク

21

計  
算  
者



精  
算  
書



備  
考

1

点	①	②	③	④	⑤	⑥	⑦ × ⑧		⑨ × ⑩		
	X	X - (定数)	X <sub>n-1</sub> - X <sub>n+1</sub>	Y	Y - (定数)	Y <sub>n-1</sub> - Y <sub>n+1</sub>	+	-	+	-	
10	-150.806.490	-150.800	+ 6.490	+ 42.968	+ 40.627.577	- 7.577	- 42.414			257.299766	271.024460
18	841.438	41.438	+ 36.193	676.580	6.580	+ 42.386			238.149940		1756.391068
11	842.583	42.583	- 1.710	669.963	49.963	+ 46.460	85.436730				1.978.406180
12	839.728	39.728	- 29.778	673.040	33.040	+ 3.894	4.579.42470				154.700.830
5	812.805	12.805	- 22.248	673.847	33.847	- 4.046	1,736.780436			51.809030	
6	807.480	7.480	- 6.415	668.994	48.994	- 46.280	314.296510			346.174400	
							3,715.938894	495.449706	669.008890	3,889.498080	
							3,720.489190				3,720.489190
							× 1/2 = 1,610.244595				



面積計算書

工区 6 フコップ 2/ 計算者  精算書  備考 4

点	①	②	③	④	⑤	⑥	⑧ ×	⑨	⑩ ×	⑪
	X	X - (定数)	X <sub>n-1</sub> - X <sub>n+1</sub>	Y	Y - (定数)	Y <sub>n-1</sub> - Y <sub>n+1</sub>	+	-	+	-
15	-150.896.180	-150.800	-25.411	40.581.588	21.588	-12.876	764.457668			66.697680
7	804.817	4.817	+ 11.447	567.827	7.827	-18.896		24.806669		91.072032
8	809.627	9.627	+ 21.891	562.692	2.692	- 6.108		85.850572		58.801716
9	836.708	36.708	+ 30.177	566.719	1.719	+ 1.958		51.874263		71.874264
10	839.804	39.804	+ 2.520	564.650	4.650	+ 18.984		16.368000		75.629136
16	840.228	40.228	- 24.624	580.703	20.703	+ 16.938	716.820672			681.381864
							1481.273440	188.899604	216.521428	4508.895264
							1292.273824			1292.273824
							× 1/2 = 646.136912			

