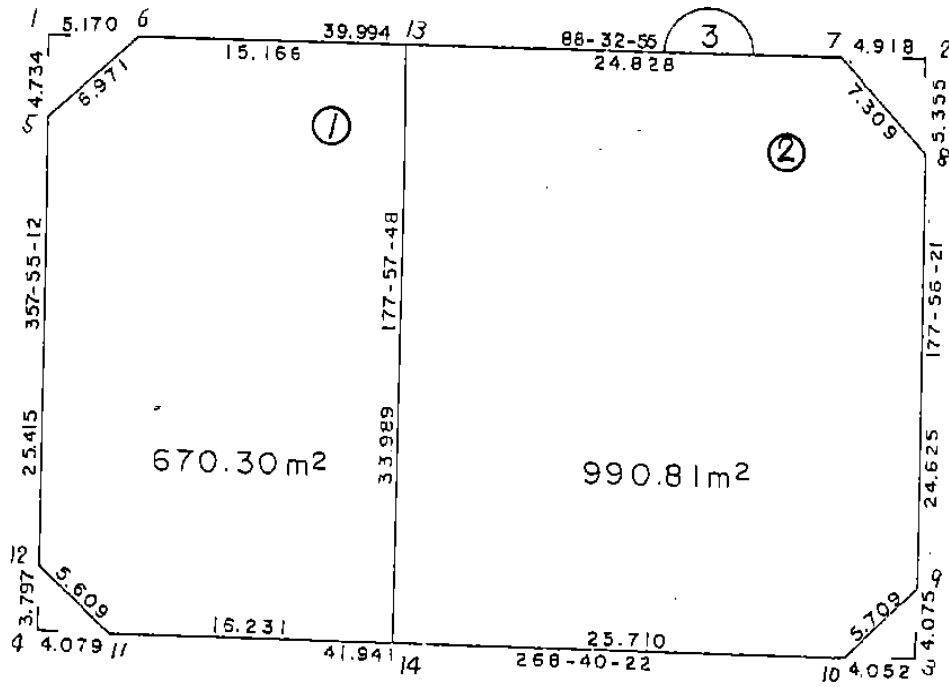


画地略図

街区番号

6-3

備考



記入者

点検者

# 面積計算書

工  
区

6

7  
0  
7  
2

3

計  
算  
者



精  
算  
書



備  
考

全体

点	①	②	③	④	⑤	⑥	⑦ X ⑧		⑨	⑩ X ⑪	
	X	X - (定数)	X <sub>n-1</sub> - X <sub>n+1</sub>	Y	Y - (定数)	Y <sub>n-1</sub> - Y <sub>n+1</sub>	+	-	+	-	
1	-150 710.811	-150 700 10.811	-35.193	-40 343.732	-40290 53.732	-48.834		1890.990276		527.944374	
2	709.542	9.542	+32.764	293.666	3.666	-51.291	120.112824			489.418722	
3	743.575	43.575	+35.193	292.441	2.441	+48.834	35.906113			2127.941550	
4	744.735	44.735	-32.764	342.500	52.500	+51.291		1720.110000		2294.502885	
								206.018937	3611.100276	4422.444435	1017.363096
									3405.081339	3405.081339	
									X / 2 =	1702.540670	
				(1702.54)						(12.23 + 13.16 + 8.25 + 7.74) =	166.16 m <sup>2</sup>

面積計算書

工  
区

6

7  
0  
7  
7

3

計  
算  
者



精  
算  
書



備  
考

スミ切1.  
スミ切2.

点	①	②	③	④	⑤	⑥	⑦	⑧	⑨	⑩
	X	X - (定数)	X <sub>n-1</sub> - X <sub>n+1</sub>	Y	Y - (定数)	Y <sub>n-1</sub> - Y <sub>n+1</sub>	+	-	+	-
1	-150 710.811	-150.710 0.811	-4.862	-40 343.732	-40.330 13.732	-4.996		66.764984		4.051756
6	710.680	0.680	+4.731	338.564	8.564	-0.172	40.516284			0.116960
5	715.542	5.542	+0.131	343.560	13.560	+5.168	1.776360		28.641056	
							42.292644	66.764984	28.641056	4.168716
								24.472340	24.472340	
							X/2 =	12.236170		
2	-150 709.542	-150.700 9.542	+5.227	-40 293.666	-40.290 3.666	-5.109	19.162182			48.750078
8	714.894	14.894	+0.125	293.473	3.473	+4.916	0.434125		73.218904	
7	709.667	9.667	-5.352	298.582	8.582	+0.193		45.930864	1.865731	
							19.596307	45.930864	75.084635	48.750078
								26.334557	26.334557	
							X/2 =	13.1672785		

面積計算書

工区

6

7  
0  
7  
7

3

計算者



精算書





備考

スミ切 3.

スミ切 4.



点	①	②	③	④	⑤	⑥	③	X	⑤	②	X	⑥
	X	X - (定数)	X <sub>n-1</sub> - X <sub>n+1</sub>	Y	Y - (定数)	Y <sub>n-1</sub> - Y <sub>n+1</sub>	+	-	+	-		
3	-150 743.575	-150730 13.575	+4.166	-40 292.441	-40290 2.441	+3.904	10.169206			52.996800		
10	743.669	13.669	-4.072	296.492	6.492	+0.147		26.435424		2.009343		
9	739.503	9.503	-0.094	292.588	2.588	-4.051		0.243272			38.496653	
							10.169206	26.678696		15.006143	38.496653	
								16.509490		16.509490		
								x <sub>1/2</sub> = 8.254745				
4	-150 744.735	-150740 4.735	-3.699	-40 342.500	-40330 12.500	+4.216		46.237500		19.962760		
12	740.941	0.941	-0.095	342.638	12.638	-4.078		1.200610			3.837398	
11	744.640	4.640	+3.794	338.422	8.422	-0.138	31.953068				0.640320	
							31.953068	47.438110		19.962760	4.477718	
								15.485042		15.485042		
								x <sub>1/2</sub> = 7.742521				

# 面積計算書

工 区  $\delta$   $\gamma$   $\omega$  計算者  精算書  備考 1.

点	①	②	③	④	⑤	⑥	⑦ X ⑧		⑨ X ⑩	
	X	X - (定数)	$X_{n-1} - X_{n+1}$	Y	Y - (定数)	$Y_{n-1} - Y_{n+1}$	+	-	+	-
5	-150 715.542	-150.710 5.542	-30.261	-40 343.560	-40.320 23.560	-4.074		712.949160		22.578108
6	710.680	0.680	-5.246	338.564	18.564	-20.157		97.386744		13.706760
13	710.296	0.296	+33.584	323.403	3.403	-16.369	114.286352			4.845224
14	744.264	34.264	+34.344	322.195	2.195	+15.019	75.385080		514.611016	
11	744.680	34.680	-3.323	338.422	18.422	+20.443		61.216306	708.14520	
12	740.941	30.941	-29.098	342.638	22.638	+5.138		658.720524	158.974858	
							189.671432	1530.272734	1381.731394	41.130092
								1340.601302	1340.601302	
							$\times \frac{1}{2} =$	670.300651		

面積計算書

工区 6 7ブロック 3 計算者  精算者  備考 2.

点	①	②	③	④	⑤	⑥	⑦	⑧	⑨	⑩	
	X	X - (定数)	X <sub>n-1</sub> - X <sub>n+1</sub>	Y	Y - (定数)	Y <sub>n-1</sub> - Y <sub>n+1</sub>	+	-	+	-	
13	-150 710.296	-150 10.296	-34.597	-40 323.403	-40 33.403	-23.613		1155.643591		243.119448	
7	709.667	9.667	+4.598	298.582	8.582	-29.930	39.460036			289.233310	
8	714.894	14.894	+29.836	293.473	3.473	-5.994	103.620428			89.274636	
9	739.503	39.503	+28.775	292.588	2.588	+3.019	74.469700		119.259557		
10	743.669	43.669	+4.761	296.492	6.492	+29.607	30.908412		1292.908083		
14	744.264	44.264	-33.373	322.195	32.195	+26.911		1074.443735	1191.188504		
								248.458576	2230.087326	2603.356144	621.727394
									1981.628750	1981.628750	
							X/2		990.814375		

