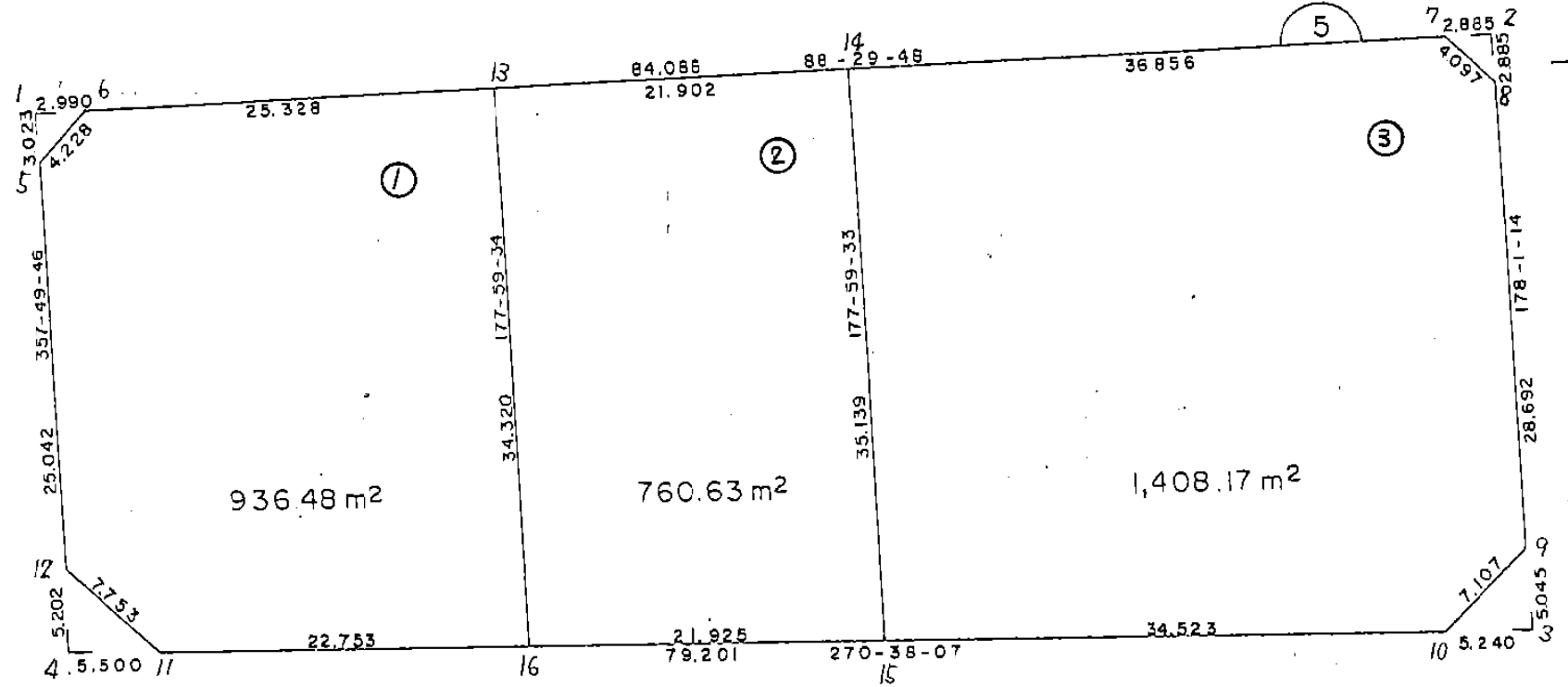


画地略図

街区番号

6-5

備考



記入者

点検者

面積計算書

工区 6 7077 5 計算者 徳山 精算書 備考 全体

点	①	②	③	④	⑤	⑥	⑦	⑧	⑨	⑩
	X	X - (定数)	X _{n-1} - X _{n+1}	Y	Y - (定数)	Y _{n-1} - Y _{n+1}	+	-	+	-
1	⁻¹⁵⁰ 842.777	^{-150,840} 2.777	-35.603	⁻⁴⁰ 451.444	^{-40,360} 91.444	-88.670	3255.680732			246.236590
2	840.417	0.417	+34.240	361.514	1.514	-91.195		51.839360	38.028315	
3	877.017	37.017	+35.603	360.249	0.249	+88.670		8.865147		3282.297390
4	876.020	36.020	-34.240	450.184	90.184	+91.195	3087.900160			3284.843900
							6343.580892	60.704507	284.264905	6567.141290
							6282.876385			6282.876385
							1/2 3141.438192 ⁵			
							≒ 3141.43			
		3141.43	(4.52 + 4.16 + 13.20 + 14.28)							3105.27
				36.16						

面積計算書

工区 6 7077 5 計算者 徳山 精算書 徳山 備考 スミ切1
スミ切2

点	①	②	③	④	⑤	⑥	③	X	⑤	②	X	⑥
	X	X - (定数)	X _{n-1} - X _{n+1}	Y	Y - (定数)	Y _{n-1} - Y _{n+1}	+	-	+	-		
1	^{-150.} 842.777	^{-150.840} 2.777	-3.100	^{-40.} 451.444	^{-40.440} 11.444	-2.875	35.476400			7.983875		
6	842.698	2.698	+3.021	448.455	8.455	-0.114		25.542555		2.307572		
5	845.798	5.798	+0.079	451.330	11.330	+2.989		0.895070				17.330222
							35.476400	26.437625		8.291447		17.330222
							9.038775					9.038775
							$\times 1/2 = 4.5193875$					
							$\div 4.52$					
2	^{-150.} 840.417	^{-150.840} 0.417	+2.807	^{-40.} 361.514	^{-40.360} 1.514	-2.984		4.249798		1.244328		
8	843.300	3.300	+0.076	361.414	1.414	+2.884		0.107464				9.517200
7	840.493	0.493	-2.883	364.398	4.398	+0.100	12.679434					0.049300
							12.679434	4.357262		1.244328		9.566500
							8.322172					8.322172
							$\times 1/2 = 4.161086$					
							$\div 4.16$					

面積計算書

工
区

6

7
0
7
7

5

計
算
者



精
算
書



備
考

スニ切 3
スニ切 4

点	①	②	③	④	⑤	⑥	⑧	⑨	⑩	⑪	⑫
	X	X - (定数)	X _{n-1} - X _{n+1}	Y	Y - (定数)	Y _{n-1} - Y _{n+1}	+	-	+	-	
3	-150. 877.017	-150.870 7.017	+4.984	-40. 360.249	-40.360 0.249	+5.066			1.241016		35.548122
10	876.959	6.959	-5.042	365.489	5.489	+0.174	27.675538				1.210866
9	871.975	1.975	+0.058	360.423	2.423	-5.240			0.024534	10.349000	
							27.675538	1.265550	10.349000		36.758988
							26.409988				26.409988
									x ^{1/2} = 13.204994		
									≒ 13.20		
4	-150. 876.020	-150.870 6.020	-5.259	-40. 450.184	-40.440 10.184	+5.696	53.547138				34.289920
12	870.822	0.822	+0.061	450.381	10.381	-5.497			0.63324	4.518534	
11	876.081	6.081	+5.198	444.685	4.685	-0.199			24.352630	1.210119	
							53.547138	24.985871	5.728653		34.289920
							28.561267				28.561267
									x ^{1/2} = 14.280633 ⁵		
									≒ 14.28		

面積計算書

工区 6 ブロック 5 計算者 (印) 精算者 (印) 備考 1. 2.

点	①	②	③	④	⑤	⑥	③	X	⑤	②	X	⑥	
	X	X - (定数)	X _{n-1} - X _{n+1}	Y	Y - (定数)	Y _{n-1} - Y _{n+1}	+	-	+	-			
13	^{-150.} 842.034	^{-150.840} 2.034	+33.635	^{-40.} 423.136	^{-40.420} 3.136	-26.521			105.479360			53.943714	
16	876.333	36.333	+34.047	421.934	1.934	+21.549			65.846878			782.939817	
11	876.081	36.081	-5.514	444.685	24.685	+28.447	36.039035					1026.396207	
12	870.822	30.822	-30.283	450.381	30.381	+6.645	920.027823					204.812190	
5	845.798	5.798	-28.124	451.330	31.330	-1.926	881.124920					11.166948	
6	842.698	2.698	-3.764	448.455	28.455	-28.194	1071.04620					76.067412	
									2044.296398		171.326258	141.178074	2014.148214
									1872.970140				1872.970140
									x/2 = 936.485070				
									≒ 936.48				
14	^{-150.} 841.459	^{-150.840} 1.459	+34.542	^{-40.} 401.241	^{-40.400} 1.241	-23.126			42.866622			33.740834	
15	876.576	36.576	+34.874	400.010	0.010	+20.693			0.348740			756.867168	
16	876.333	36.333	-34.542	421.934	21.934	+23.126	757.644228					840.236958	
13	842.034	2.034	-34.874	423.136	23.136	-20.693	806.844864					42.089562	
									1564.489092		43.215362	75.830396	1597.104126
									1521.273730				1521.273730
									x/2 = 760.636865				
									≒ 760.63				

≒ 760.63 /

面積計算書

工 区 6 フロップ 5 計算者 (印) 精算書 (印) 備考 3.

点	①	②	3	4	⑤	⑥	③	④	②	⑥
	X	X - (定数)	X _{n-1} - X _{n+1}	Y	Y - (定数)	Y _{n-1} - Y _{n+1}	+	-	+	-
8	^{-150.} 843.300	^{-150.840} 3.300	+31.482	^{-40.} 361.414	^{-40.360} 1.414	-3.975		44.515548		13.117500
9	871.975	31.975	+33.659	360.423	0.423	+4.075		14.237757		130.298125
10	876.959	36.959	+4.601	365.489	5.489	+39.587		25.254889		1463.095933
15	876.576	36.576	-35.500	400.010	40.010	+35.752	1420.355000			1307.665152
14	841.459	1.459	-36.083	401.241	41.241	-35.612	1488.099003			51.957908
7	840.493	0.493	+1.841	364.398	4.398	-39.827		8.096718		19.634711
							2908.454003	92.104912	84.710119	2901.059210
							2816.349091			2816.349091
							x/2 = 1408.1745455			
							= 1408.17			

BNO. 5 各筆面積計算書

画番 地号	地番	隅切	地積	摘要
1			936.48	✓
2			760.63	✓
3			1408.17	✓
	計		3105.28	✓
	全体		3105.27	✓

計算者

点検者