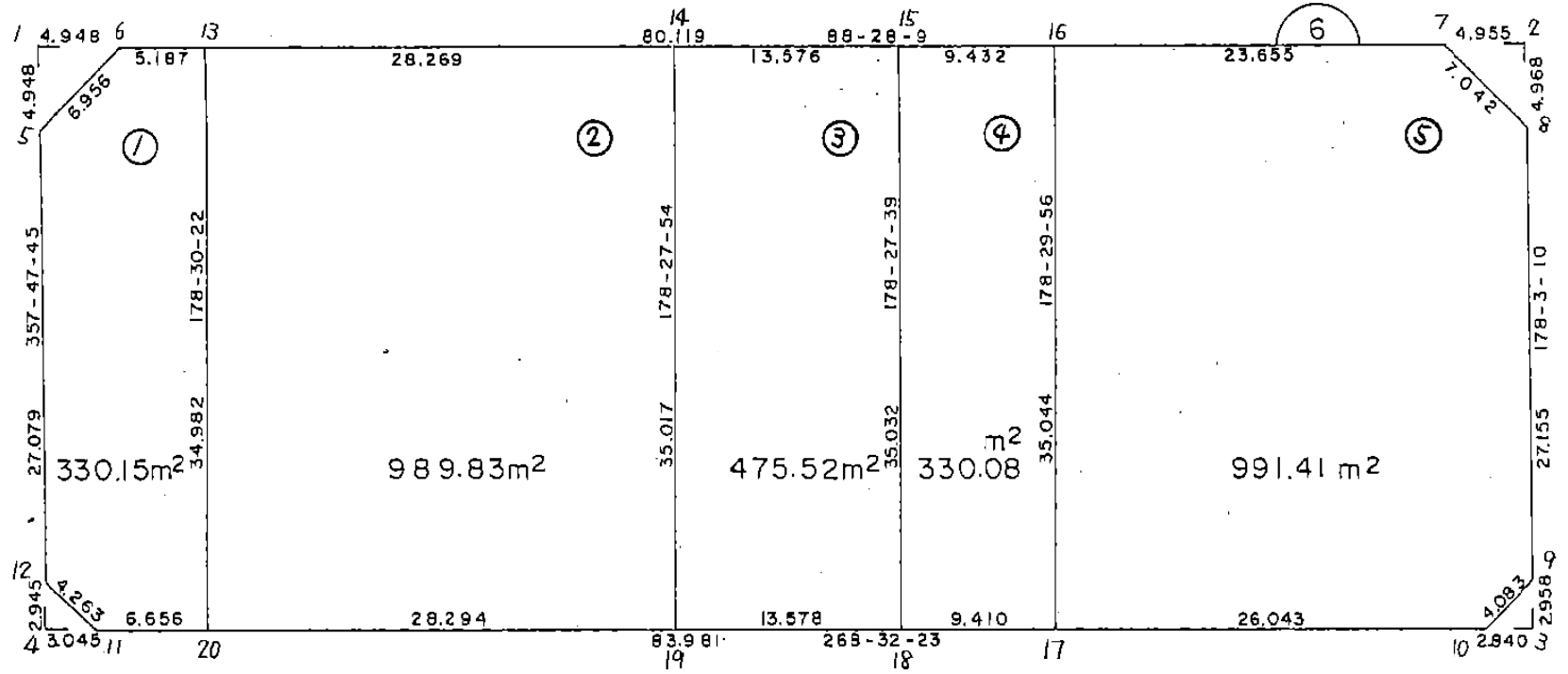


画地略図

街区番号

6-6

備考



記入者

点検者

面積計算書		工 区	△	フ ロ ッ ク	△	計 算 者	精 算 書	備 考	全体		
点	①	②	③	④	⑤	⑥	(③) ×	⑤	② ×	⑥	
	X	X - (定数)	X _{n-1} - X _{n+1}	Y	Y - (定数)	Y _{n-1} - Y _{n+1}	+	-	+	-	
1	-150 801.839	-150 790 11.839	-37.351	-40 452.962	-40 360 92.962	-88.645		3472.223662		1049.468155	
2	799.434	9.434	+37.656	362.972	2.972	-91.182	97.053632			860.210988	
3	834.495	44.495	+37.351	361.780	1.780	+88.645	66.484780			3944.259275	
4	836.785	46.785	-32.656	451.617	91.617	+91.182		2991.244752	4265.949870		
								163.538412	6464.068414	8210.209145	1909.679143
								6300.630002	6300.530002		
								* 1/2 = 3150.265001			
								(3150.26) - (12.23 + 12.30 + 4.20 + 4.48) = 3117.05			

面積計算書

工区 6 フロップ 6 計算者  精算書  備考 スミ切 1
スミ切 2

点	①	②	③	④	⑤	⑥	③	⑤	②	⑥
	X	X - (定数)	X _{n-1} - X _{n+1}	Y	Y - (定数)	Y _{n-1} - Y _{n+1}	+	-	+	-
1	-150 801.839	-150 800 1.839	-5.076	-40 452.962	-40 440 12.962	-4.756		65.795112		8.746284
6	801.707	1.707	+4.944	448.016	8.016	-0.190	39.631104			0.324330
5	806.783	6.783	+0.132	452.772	12.772	+4.946	1.685904		33.548718	
							41.317008	65.795112	33.548718	9.070614
								24.478104	24.478104	
								$\times \frac{1}{2} = 12.239052$		
2	-150 799.434	-150 799 0.434	+4.833	-40 362.972	-40 360 2.972	-5.122	14.363676			2.222948
8	804.399	5.399	+0.132	362.803	2.803	+4.953	0.369996		26.741247	
7	799.566	0.566	-4.965	367.925	7.925	+0.169		39.347625	0.095654	
							14.733672	39.347625	26.836901	2.222948
								24.613953	24.613953	
								$\times \frac{1}{2} = 12.3069765$		

面積計算書

工区 6 7077 6 計算者  核算者  備考 2ミ切3 2ミ切4

点	①	②	3	4	⑤	⑥	③	X	⑤	②	X	⑥
	X	X - (定数)	X _{n-1} - X _{n+1}	Y	Y - (定数)	Y _{n-1} - Y _{n+1}	+	-	+	-		
4	-150 834.495	-150830 4.495	+3.029	-40 361.780	-40360 1.780	+2.738	5.391620			12.307310		
10	834.567	4.567	-2.957	364.619	4.619	+0.101		13.658383		0.461267		
9	831.538	1.538	-0.072	361.881	1.881	-2.839		0.135432				4.366382
							5.391620	13.793815		12.768577		4.366382
								8.402195		8.402195		
								$\times \frac{1}{2} =$		4.2010975		
4	-150 836.785	-150830 6.785	-2.865	-40 451.617	-40440 11.617	+3.157				33.282705		21.420245
12	833.842	3.842	-0.078	451.730	11.730	-3.044		0.914940				11.695048
11	836.707	6.707	+2.943	448.573	8.573	-0.113	25.230339					0.757891
							25.230339	34.197645		21.420245		12.452939
								8.967306		8.967306		
								$\times \frac{1}{2} =$		4.483653		

面積計算書

工
区

6

ブロック

6

計算者



精算書



備考

1.
2.

点	①	②	③	④	⑤	⑥	③ × ⑤		② × ⑥		
	X	X - (定数)	X _{n-1} - X _{n+1}	Y	Y - (定数)	Y _{n-1} - Y _{n+1}	+	-	+	-	
6	-150 801.707	-150800 1.707	-5.215	-40 448.016	-40440 8.016	-9.941			41.803440	16.969287	
13	801.568	1.568	+34.831	442.831	2.831	-6.097	98.606561			9.560096	
20	836.538	36.538	+35.139	441.919	1.919	+5.742	67.431741		209.801196		
11	836.707	36.707	-2.696	448.573	8.573	+9.811		23.112808		360.132377	
12	833.842	33.842	-29.924	451.730	11.730	+4.199		351.008520		142.102458	
5	806.783	6.783	-32.135	452.772	12.772	-3.714		410.428220		25.192062	
								166.038302	826.352988	712.036131	51.721445
								660.314686	660.314686		
								× 1/2 =		330.157343	
13	-150 801.568	-150800 1.568	-35.725	-40 442.831	-40410 32.831	-27.347			1172.887475	42.880096	
14	800.813	0.813	+34.249	414.572	4.572	-29.197	156.586428			23.737161	
19	835.817	35.817	+35.725	413.634	3.634	+27.347	129.824650		979.487499		
20	836.538	36.538	-34.249	441.919	31.919	+29.197		1093.193831	1066.799986		
								286.411078	2266.081306	2046.287485	66.617257
								1979.670228	1979.670228		
								× 1/2 =		989.835114	

面積計算書

工
区

6

7
0
7
7

6

計
算
者





精
算
書



備
考

4.

点	①	②	③	④	⑤	⑥	③ × ⑤		② × ⑥		
	X	X - (定数)	X _{n-1} - X _{n+1}	Y	Y - (定数)	Y _{n-1} - Y _{n+1}	+	-	+	-	
14	-150 800.813	-150 800 0.813	-35.366	-40 414.572	-40 400 14.572	-12.633		515.353352		10.270629	
15	800.451	0.451	+34.657	401.001	1.001	-14.512	34.691657			6.544912	
18	835.470	35.470	+35.366	400.060	0.060	+12.633	2.121960		448.092510		
19	835.817	35.817	-34.657	413.634	13.634	+14.512		472.513532	519.776304		
								36.813617	987.866890	967.868814	16.815541
								951.053273	951.053273		
								× 1/2 =		475.5266365	
15	-150 800.451	-150 800 0.451	-35.271	-40 401.001	-40 400 11.001	-8.488		388.016271		3.828088	
16	800.199	0.199	+34.780	391.572	1.572	-10.347	54.674160			2.059053	
17	835.231	35.231	+35.271	390.654	0.654	+8.488	23.067234		299.040728		
18	835.470	35.470	-34.780	400.060	10.060	+10.347		349.886800	367.008090		
								77.741394	737.903071	666.048818	5.887141
								660.161677	660.161677		
								× 1/2 =		330.0808385	

面積計算書		工区	6	7 ロ ッ ?	6	計算者		精算書		備考	5	
点	①	②	③	④	⑤	⑥	⑧	X	⑤	⑨	⑩	
	X	X - (定数)	X _{n-1} - X _{n+1}	Y	Y - (定数)	Y _{n-1} - Y _{n+1}	+	-	+	-		
16	-150 800.199	-150790 10.199	-35.665	-40 391.572	-40360 31.572	-22.729			1126.015380		231.813071	
7	799.566	9.566	+4.200	367.925	7.925	-28.769	33.285000				275.204254	
8	804.399	14.399	+31.972	362.803	2.803	-6.044	89.617516				87.027556	
9	831.538	41.538	+30.168	361.881	1.881	+1.816	56.746008			75.433008		
10	834.567	44.567	+3.693	364.619	4.619	+28.773	17.057967			1282.326291		
17	835.231	45.231	-34.368	390.654	30.654	+26.953			1053.516672	1219.111143		
									196.706491	2179.532052	2576.870442	594.044881
										1982.825561	1982.825561	
										* 1/2 =	991.4127805	

BNO. 6 各筆面積計算書

画番 地号	地番	隅切	地積	摘要
1			330 15 /	
2			989 83 /	
3			475 52 /	
4			330 08 /	
5			991 41 /	
	計		3116 99 /	
	全 体		3117 05 /	
		計算者		点検者