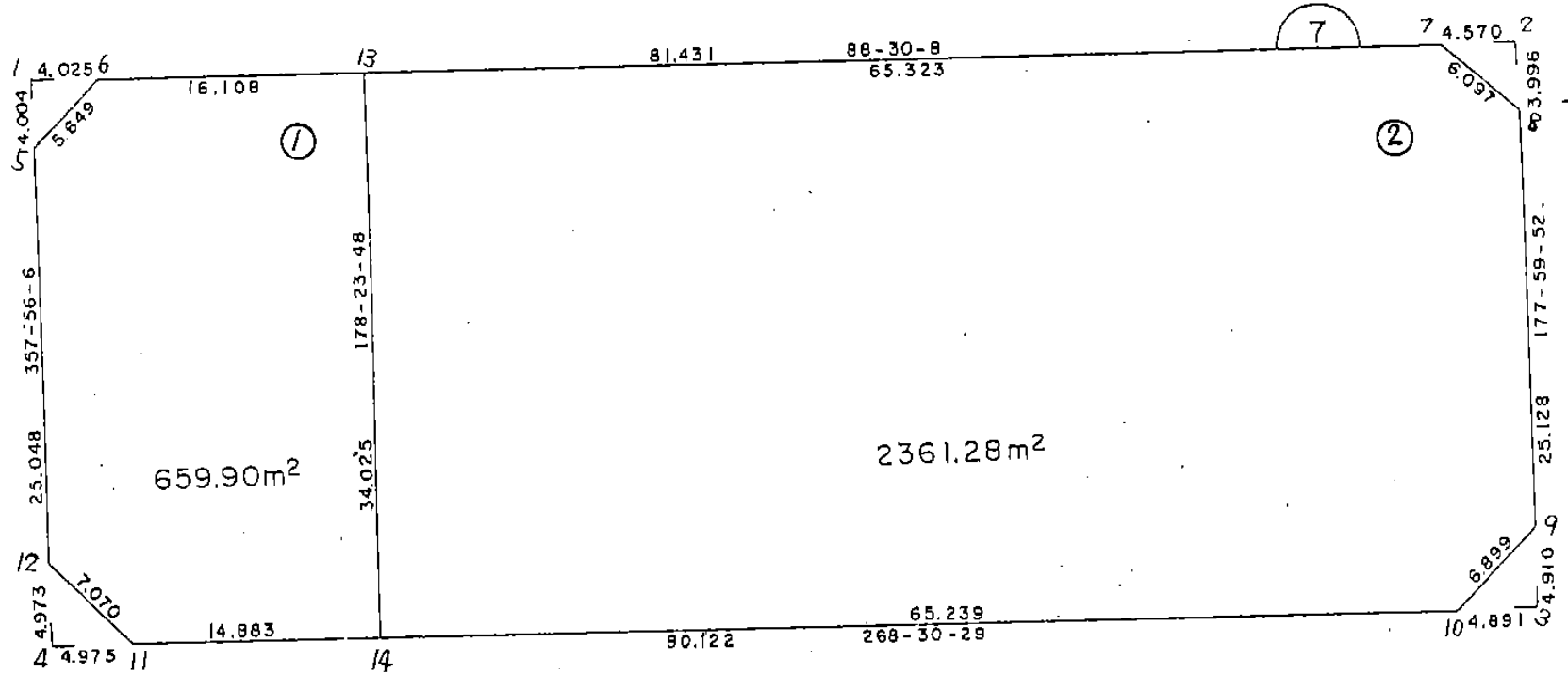


画地略図

街区番号

6-7

備考



記入者

点検者

面積計算書

工区 6 フロア 7 計算者  精算書  備考 スミナリ 1
2

点	①	②	③	④	⑤	⑥	③	⑤	②	⑥
	X	X - (定数) -150.750	X _{n-1} - X _{n+1}	Y	Y - (定数) -40.450	Y _{n-1} - Y _{n+1}	+	-	+	-
1	-150.755.760	5.760	-11.106	-40.454.610	4.610	-3.880	18.928660		22.260440	
6	755.658	5.658	+4.001	450.586	0.586	-0.144		2.344.586	0.814752	
5	749.764	9.764	+0.105	454.466	4.466	+4.024		0.468920		39.290336
							18.928660	2.813.516	23.175192	39.290336
							16.115144			16.115144
								x 1/2 = 8.057572		
2	-150.753.410	3.410	+3.874	-40.364.615	4.615	-4.708		17.878510	16.054280	
8	757.403	7.403	+0.119	364.476	4.475	+4.568		0.532525		33.816904
7	753.529	3.529	-3.993	369.183	9.183	+0.140	36.667719			0.494060
							36.667719	18.411035	16.054280	34.310964
							18.256684			18.256684
								x 1/2 = 9.128342		

面積計算書

工区 6 7 計算者  精算者  備考 スミフリ ウ

点	①	②	3	4	5	⑥	③	×	5	②	×	⑥
	X	X - (定数)	X _{n-1} - X _{n+1}	Y	Y - (定数)	Y _{n-1} - Y _{n+1}	+		-	+		-
8	-150.787.472	-150.780 7.478	+5.034	-40.363.476	-40.360 3.476	+4.718				17.2464.844		35.02174
10	787.560	7.560	-4.907	368.315	8.315	+0.171	40.801705					1.2910.50
9	782.516	2.516	-0.127	362.597	3.597	-4.889	0.456819			12.300724		
							41.258524	17.2464.844	12.300724	36.312764		
							24.012040					24.012040
												x 1/2 = 12.006020
4	-150.789.768	-150.780 9.768	-4.840	-40.463.384	-40.460 3.384	+5.158	44.778560					50.324198
12	784.796	4.796	-0.130	453.563	13.563	-4.974	1.763190			23.855304		
11	789.636	9.636	+4.970	448.410	8.410	-0.179	41.797700			1.724844		
							66.541750	41.797700	25.580148	50.324198		
							24.744050					24.744050
												x 1/2 = 12.372025

面積計算書

工
区

6

フ
ロ
ック

7

計
算
者



精
算
書



備
考

2
1

点	①	②	3	4	⑤	⑥	③	X	⑤	②	X	⑥
	X	X - (定数)	X _{n-1} - X _{n+1}	Y	Y - (定数)	Y _{n-1} - Y _{n+1}	+	-	+	-		
7	-150.750.529	-150.750 2.529	+2.166	40.269.183	-40.260 9.183	-70.009				19.890378	247.06176	
8	757.403	7.403	+28.987	264.475	4.475	-5.581				129.716825	41.250358	
9	782.516	2.516	+20.147	363.597	3.597	+2.840				108.428759		124.861440
10	787.550	7.550	+6.733	268.315	8.315	+69.935				55.984895		2.626.059250
11	789.249	9.249	-22.213	433.532	73.532	+66.169	2.276.039516					2.597.06708
12	755.237	5.237	-25.770	434.484	74.484	-64.349	7.660.568486					236.995713
							5.036.607996			314.020857	625.410632	5.347.987771
							4.772.571397					4.772.577139
										X 1/2 = 2361.2885695		
13	-150.750.237	-150.750 5.237	+23.591	40.434.484	4.484	-17.054				150.677044	89.211798	
14	789.249	9.249	+24.299	433.532	3.532	+13.926				121.497268		546.581574
11	789.636	9.636	-4.453	448.410	18.410	+20.031				81.979720		793.948716
12	784.796	4.796	-29.872	452.562	23.562	+6.056				703.873336		210.724574
5	759.764	9.764	-29.138	454.466	24.466	-2.977				712.890208		29.067428
6	755.658	5.658	-11.527	450.586	20.586	-19.982				93.192822		112.058156
							1.591.936796			272.119312	231.427382	1.551.254816
							1.319.817484					1.319.817484

X 1/2 = 659.908742

BNO. 7 各筆面積計算書

画番	地号	地番	隅切	地積	摘要
1				659 90	
2				2361 28	
		計		3021 18	
		全体		3021 21	
			計算者		点検者