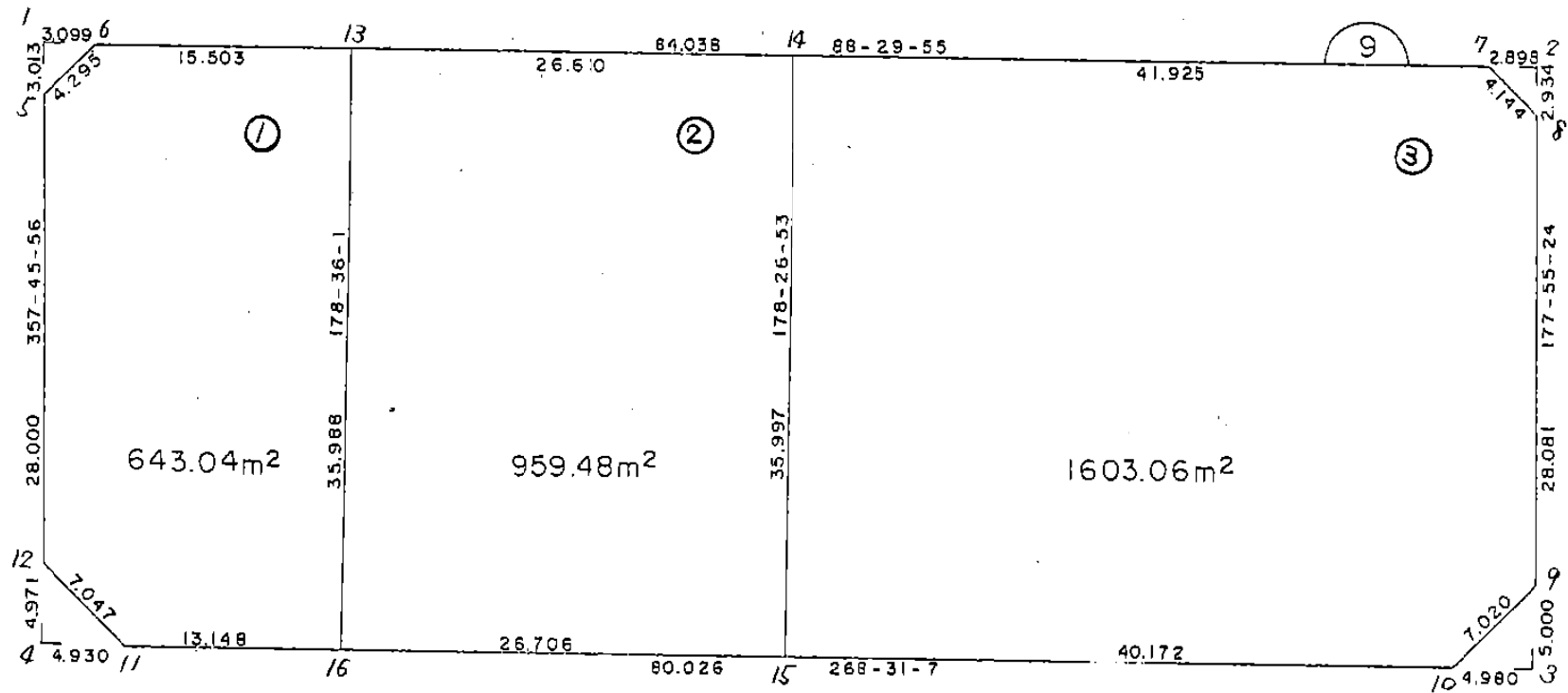


画地略図

街区番号

6-9

備考



記入者

点検者

面積計算書

工区 6 フロア 9 計算者 (Seiwa) 精算書 (Seiwa) 備考 全体

点	①	②	③	④	⑤	⑥	③ X ⑤		② X ⑥	
	X	X - (定数)	X _{n-1} - X _{n+1}	Y	Y - (定数)	Y _{n-1} - Y _{n+1}	+	-	+	-
1	-150 663.838 ✓	-150.660 3.838 ✓	-38.316 ✓	-40 458.017 ✓	-40.360 98.017 ✓	-88.601 ✓			3755.619372 ✓	340.050638 ✓
2	661.479 ✓	1.479 ✓	+33.632 ✓	368.013 ✓	8.013 ✓	-91.309 ✓			369.493216 ✓	135.046011 ✓
3	697.470 ✓	37.470 ✓	+38.316 ✓	366.708 ✓	6.708 ✓	+88.601 ✓			257.023728 ✓	3319.879470 ✓
4	699.795 ✓	39.795 ✓	-33.632 ✓	456.614 ✓	96.614 ✓	+91.309 ✓			3249.322048 ✓	3633.641655 ✓
									526.516944 ✓	7004.941420 ✓
										1953.521125 ✓
										475.096649 ✓
										6478.424476 ✓
										6478.424476 ✓
										X 1/2 = 3239.212238 ✓
										(3239.21) - (4.66 + 4.25 + 12.44 + 12.25) = 3205.61 ✓

面積計算書

工区 6 フロア 9 計算者  精算書  備考 スミ切 1
スミ切 2

点	①	②	③	④	⑤	⑥	③ X ⑤		② X ⑥	
	X	X - (定数)	X _{n-1} - X _{n+1}	Y	Y - (定数)	Y _{n-1} - Y _{n+1}	+	-	+	-
1	$\frac{-150}{663.838}$	$\frac{-150660}{3.838}$	-3.092	$\frac{-40}{458.017}$	$\frac{-40450}{8.017}$	-2.981		24.788564		11.441078
6	663.757	3.757	$+3.011$	454.919	4.919	-0.117	14.811109			0.439569
5	666.849	6.849	$+0.081$	457.900	7.900	$+3.098$	0.639900		21.218202	
							15.451009	24.788564	21.218202	11.880647
								9.337555	9.337555	
							$\times \frac{1}{2} =$	4.668775		
2	$\frac{-150}{661.479}$	$\frac{-150660}{1.479}$	$+2.856$	$\frac{-40}{368.013}$	$\frac{-40360}{8.013}$	-3.003	22.885128			4.441437
8	664.411	4.411	$+0.076$	367.907	7.907	$+2.897$	0.600932		12.778667	
7	661.555	1.555	-2.932	370.910	10.910	$+0.106$		31.988120	0.164830	
							23.486060	31.988120	12.943497	4.441437
								8.502060	8.502060	
							$\times \frac{1}{2} =$	4.251030		

面積計算書

工区 6 7077 9 計算者  精算者  備考 スミ切 3
スミ切 4

点	①	②	③	④	⑤	⑥	⑦	⑧	⑨	⑩	
	X	X - (定数)	X _{n-1} - X _{n+1}	Y	Y - (定数)	Y _{n-1} - Y _{n+1}	+	-	+	-	
3	-150 697.470	-150.690 7.470	+5.125	-40 366.708	-40.360 6.708	+4.797	34.378500			35.833590	
10	697.599	7.599	-4.996	371.686	11.686	+0.181		58.383256		1.375419	
9	692.474	2.474	-0.129	366.889	6.889	-4.978		0.888681		12.315572	
							34.378500	59.271937		37.209009	12.315572
								24.893437		24.893437	
								$\times \frac{1}{2} =$		12.4467185	
4	-150 699.795	-150.690 9.795	+4.840	-40 456.614	-40.450 6.614	-5.122	32.011760			50.169990	
11	699.667	9.667	-4.968	451.686	1.686	+0.194		8.376048		1.875398	
12	694.827	4.827	+0.128	456.808	6.808	+4.928		0.871424		23.787456	
							32.883184	8.376048		25.662854	50.169990
							24.507136			24.507136	
								$\times \frac{1}{2} =$		12.253568	

面積計算書		工区	6	7077	9	計算者	精算書	備考	2.
点	①	②	3	4	⑤	⑥	③ × ⑤	② × ⑥	
	X	X - (定数)	X _{n-1} - X _{n+1}	Y	Y - (定数)	Y _{n-1} - Y _{n+1}	+	-	
6	-150 663.757	-150.660 3.757	-3.498	-40 454.919	-40.430 24.919	-18.479	87.166662	69.425603	
13	663.351	3.351	+35.571	439.421	9.421	-16.377	335.114391	54.879327	
16	699.328	39.328	+36.316	438.542	8.542	+12.265	310.211272	482.357920	
11	699.667	39.667	-4.501	451.686	21.686	+18.266	97.608686	724.557422	
12	694.827	34.827	-32.818	456.808	26.808	+6.214	879.784944	216.414978	
5	666.849	6.849	-31.070	457.900	27.900	-1.889	866.853000	12.937761	
							645.325663	1931.413292	1423.330320
								1286.087629	1286.087629
							$\times \frac{1}{2} =$	643.0438145	
13	-150 663.351	-150.660 3.351	-36.674	-40 439.421	-40.410 29.421	-25.722	1078.985754	86.194422	
14	662.654	2.654	+35.287	412.820	2.820	-27.576	99.509340	73.186704	
15	698.638	38.638	+36.674	411.845	1.845	+25.722	67.663530	993.846636	
16	699.328	39.328	-35.287	438.542	28.542	+27.576	1007.161554	1084.508928	
							167.72870	2086.147308	2078.355564
								1918.974438	1918.974438
							$\times \frac{1}{2} =$	959.487219	

面積計算書

工
区

6

フ
ロ
ック

9

計
算
者



精
算
書



備
考

3.

点	①	②	③	④	⑤	⑥	⑦	⑧	⑨	⑩
	X	X - (定数)	X _{n-1} - X _{n+1}	Y	Y - (定数)	Y _{n-1} - Y _{n+1}	+	-	+	-
14	⁻¹⁵⁰ 662.654 ✓	¹⁵⁰⁶⁶⁰ 2.654 ✓	-37.083 ✓	⁻⁴⁰ 412.820 ✓	⁻⁴⁰³⁶⁰ 52.820 ✓	-40.935 ✓		1958.724060 ✓		108.641490 ✓
7	661.555 ✓	1.555 ✓	+1.757 ✓	370.910 ✓	10.910 ✓	-44.913 ✓	19.168870 ✓			69.839715 ✓
8	664.411 ✓	4.411 ✓	+30.919 ✓	367.907 ✓	7.907 ✓	-4.021 ✓	244.476533 ✓			17.736631 ✓
9	692.474 ✓	32.474 ✓	+33.188 ✓	366.889 ✓	6.889 ✓	+3.779 ✓	228.632132 ✓			122.719246 ✓
10	697.599 ✓	37.599 ✓	+6.164 ✓	371.686 ✓	11.686 ✓	+44.956 ✓	72.032504 ✓			1690.300644 ✓
15	698.638 ✓	38.638 ✓	-34.945 ✓	411.845 ✓	51.845 ✓	+41.134 ✓		1811.723525 ✓	1589.335492 ✓	
							564.310039 ✓	3770.447585 ✓	3402.355382 ✓	196.217836 ✓
								3206.137546 ✓	3206.137546 ✓	
							x 1/2	1603.068773 ✓		

BNO. 9 各筆面積計算書

画番 地号	地番	隅切	地積	摘要
1			643.04	
2			959.48	
3			1603.06	
	計		3205.58	
	全体		3205.61	
		計算者		点検者