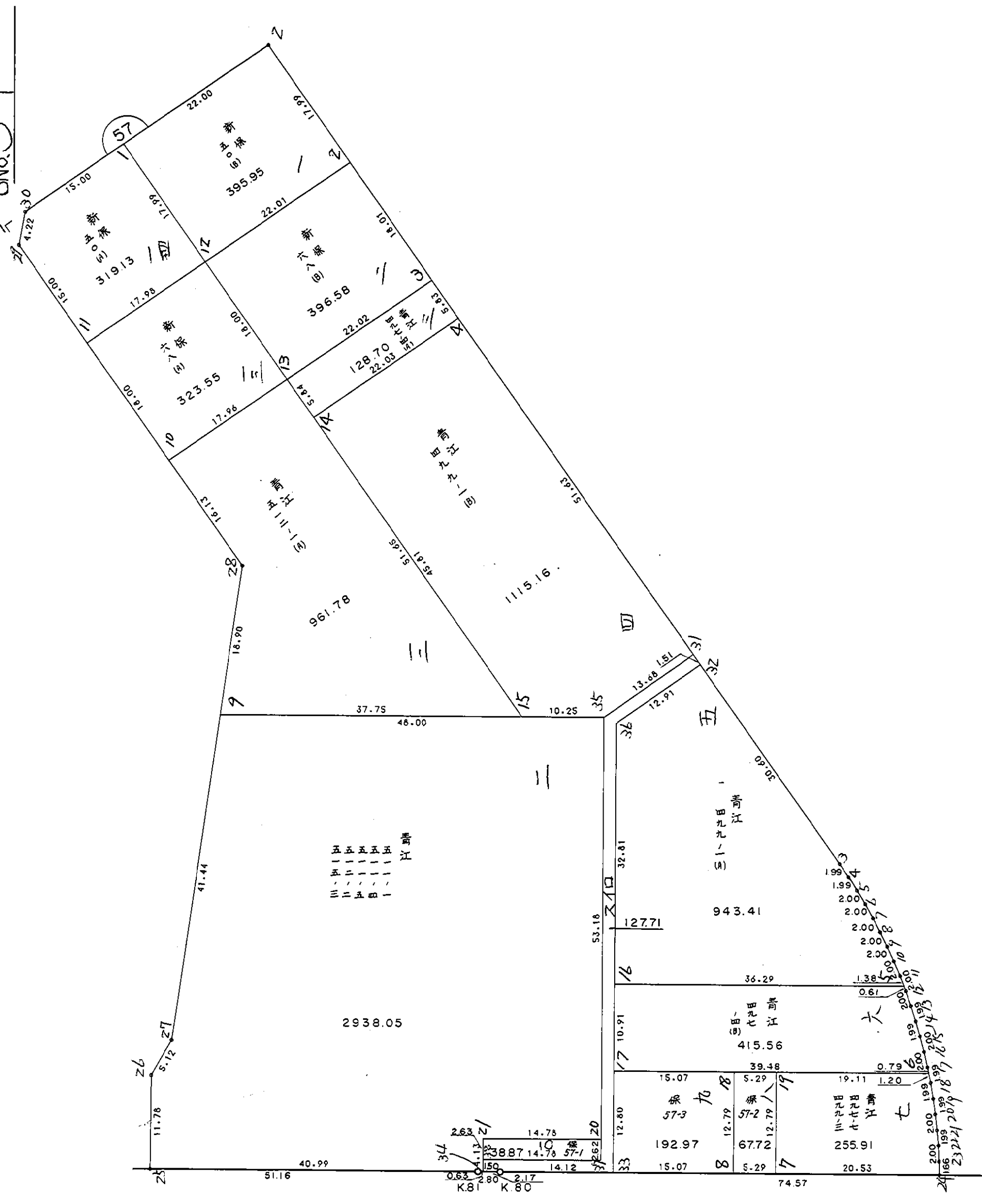
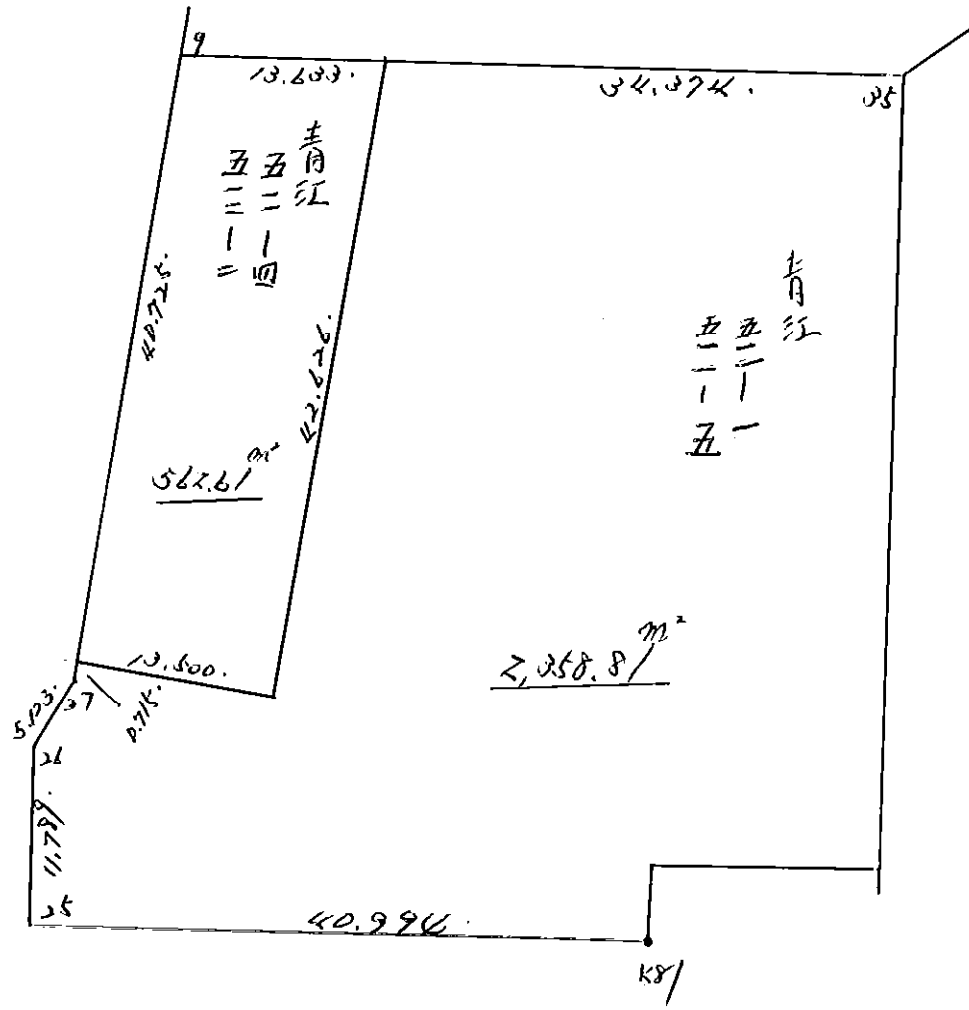


BNo. 57



57 Block.  
介筆.



11-1 LOT

POINT NO. X <sub>0</sub> Y <sub>0</sub>	X	Y	(X-X <sub>0</sub> ) (Y <sub>N-1</sub> -Y <sub>0</sub> )	(X <sub>N-1</sub> -X <sub>0</sub> ) (Y-Y <sub>0</sub> )
	-151900.000	-37900.000		
9	-151967.187	-37971.994		
42	-151969.340	-37958.532	4992.063960	3932.589484
41	-152010.079	-37971.077	6443.144028	4928.479180
40	-152006.108	-37983.980	7541.838316	9244.434420
9	-151967.187	-37971.994	5642.364260	7639.139352
			24619.410564	25744.642436
			1125.231872	1125.231872
			562.615936	562.615936

11-2 LOT

$2,921.42 - 522.61 = 2358.81 \text{ m}^2$



57 BLOCK

円NO.	X	Y	(X-X <sub>0</sub> ) (YN-1-Y <sub>0</sub> )	(XN-1-X <sub>0</sub> ) (Y-Y <sub>0</sub> )
X <sub>0</sub> , Y <sub>0</sub> =	-151900.000	-37900.000		
9	-151967.187	-37971.994		
<del>200</del> 57-35	-151974.770	-37924.590	5382.991380	1652.128330
20	-152027.284	-37932.990	3129.913560	2466.662300
21	-152024.931	-37947.586	4121.473690	6056.936424
201 57-34	-152029.010	-37948.243	6139.069860	6027.046233
K.81	-152028.906	-37948.873	6218.812158	6305.105730
202 57-25	-152022.411	-37989.349	5982.592803	11517.622194
203 57-26	-152010.785	-37987.399	9898.528965	10698.598989
204 57-27	-152006.791	-37984.190	9333.426609	9326.989150
9	-151967.187	-37971.994	5656.473530	7688.311254
			55863.282555	61739.400604
			円ノイメセキ=	5876.118049
			メセキ=	2938.059025

11-1 LOT

円NO.	X	Y	(X-X <sub>0</sub> ) (YN-1-Y <sub>0</sub> )	(XN-1-X <sub>0</sub> ) (Y-Y <sub>0</sub> )
X <sub>0</sub> , Y <sub>0</sub> =	-151900.000	-37900.000		
9	-151967.187	-37971.994		
<del>200</del> 57-35	-151974.770	-37924.590	5382.991380	1652.128330
102	-152026.388	-37932.847	3107.880920	2455.970190
103	-152023.933	-37948.072	4070.827251	6075.723936
K.81	-152028.906	-37948.873	6196.769232	6056.977509
202 57-25	-152022.411	-37989.349	5982.592803	11517.622194
203 57-26	-152010.785	-37987.399	9898.528965	10698.598989
204 57-27	-152006.791	-37984.190	9333.426609	9326.989150
9	-151967.187	-37971.994	5656.473530	7688.311254
			49629.490690	55472.321552
			円ノイメセキ=	5842.830862
			メセキ=	2921.415431

2727.42 ... 換地計画+割合=111

14-2 LOT

円NO.	X	Y	(X-X <sub>0</sub> ) (YN-1-Y <sub>0</sub> )	(XN-1-X <sub>0</sub> ) (Y-Y <sub>0</sub> )
X <sub>0</sub> , Y <sub>0</sub> =	-152000.000	-37900.000		
103	-152023.933	-37948.072		
102	-152026.388	-37932.847	1268.523936	786.127251
20	-152027.284	-37932.990	896.197548	870.540120
21	-152024.931	-37947.586	822.473690	1298.336424
201 57-34	-152029.010	-37948.243	1380.469860	1202.746233
81	-152028.906	-37948.873	1394.512158	1417.805730
103	-152023.933	-37948.072	1169.677509	1389.569232
			6931.854701	6965.124990
			円ノイメセキ=	33.270289
			メセキ=	16.635145

カクヒツ	カクヒツ	カクヒツ メンセキ	入ミナリ メンセキ
57 BLOCK		8621.13	
1 LOT		395.95	
2 LOT		396.58	
3 LOT		128.70	
4 LOT		1115.16	
5 LOT		943.41	
6 LOT		415.56	
7 LOT		255.91	
8 LOT		67.72	
9 LOT		192.97	
10 LOT		38.87	
11 LOT		2938.05	
12 LOT		961.78	
13 LOT		323.55	
14 LOT		319.13	
入ミナリ (入ミナリZ-6号)		127.71	
入ミナリ 39		<del>202.94</del>	202.94
1 入ミナリ			4.46
コウケイ =		<del>8823.99</del>	<del>4.46</del>
		8621.05	207.40

\*\*\*\*\* カクヒツ ノシセキ ケイサン \*\*\*\*\*

57 BLOCK

アノメイ	X	Y	(X-X0)*(YN-1-Y0)	(XN-1-X0)*(Y-Y0)
X0.Y0	- 151800.000	- 37800.000		
857-30	- 151900.991	- 37986.673		
857-2	- 151884.723	- 37953.434	+ 15815.496579	+ 15495.453094
857-3	- 151997.531	- 37898.211	+ 30307.971454	+ 8320.730553
857-4	- 151999.330	- 37897.344	+ 19576.398630	+ 19228.457664
857-5	- 152001.163	- 37896.547	+ 19582.011072	+ 19244.713510
857-6	- 152003.015	- 37895.792	+ 19600.489205	+ 19269.806096
857-7	- 152004.896	- 37895.104	+ 19627.397632	+ 19307.538560
857-8	- 152006.792	- 37894.466	+ 19666.746368	+ 19355.705536
857-9	- 152008.710	- 37893.883	+ 19715.998860	+ 19414.253336
857-10	- 152010.639	- 37893.350	+ 19775.421237	+ 19483.078500
857-11	- 152012.579	- 37892.865	+ 19844.249650	+ 19560.990735
857-12	- 152014.539	- 37892.460	+ 19923.164235	+ 19655.054340
857-13	- 152016.504	- 37892.084	+ 20017.959840	+ 19755.609276
857-14	- 152018.479	- 37891.780	+ 20118.420236	+ 19870.737120
857-15	- 152020.460	- 37891.525	+ 20233.818800	+ 19996.290475
857-16	- 152022.451	- 37891.326	+ 20359.827775	+ 20133.729960
857-17	- 152024.446	- 37891.190	+ 20497.755396	+ 20285.306690
857-18	- 152026.443	- 37891.105	+ 20649.337170	+ 20448.152830
857-19	- 152028.442	- 37891.086	+ 20812.208410	+ 20625.787098
857-20	- 152030.441	- 37891.116	+ 20989.948926	+ 20814.721272
857-21	- 152032.442	- 37891.214	+ 21179.185272	+ 21019.445374
857-22	- 152034.434	- 37891.347	+ 21383.662876	+ 21232.879374
857-23	- 152036.423	- 37891.555	+ 21596.531781	+ 21463.604870
857-24	- 152038.078	- 37891.777	+ 21797.231290	+ 21698.193671
K80	- 152029.363	- 37946.101	+ 21050.248051	+ 34783.433878
K81	- 152028.906	- 37948.873	+ 33443.395506	+ 34145.957899
857-25	- 152022.411	- 37989.349	+ 33110.992803	+ 43343.122194
857-26	- 152010.785	- 37987.399	+ 39911.928965	+ 41679.598989
857-27	- 152006.791	- 37984.190	+ 38752.426609	+ 38824.489150
857-28	- 151949.117	- 37966.430	+ 27465.860230	+ 34416.226130
857-29	- 151904.986	- 37988.049	+ 17472.819980	+ 28041.302733
857-30	- 151900.991	- 37986.673	+ 18991.256559	+ 19598.051578
			+703270.161397	+720512.422485
		ハイメータ	= 17242.261088	
		メータ	= 8621.130544	

1 LOT

アノメイ	X	Y	(X-X0)*(YN-1-Y0)	(XN-1-X0)*(Y-Y0)
X0.Y0	- 151800.000	- 37900.000		
1	- 151894.394	- 37973.195		
857-2	- 151884.723	- 37953.434	+ 6201.299985	+ 5043.848996
?	- 151900.834	- 37945.523	+ 5390.635656	+ 3856.845129
12	- 151910.558	- 37965.298	+ 5032.931834	+ 6587.523432

\*\*\*\*\* カクヒツ メツセキ ケイリツ \*\*\*\*\*

チヨメイ	X	Y	(X-X0)*(YN-1-Y0)	(XN-1-X0)*(Y-Y0)
1	- 151894.394	- 37973.195	+ 6163.739412	+ 8092.292810
			+ 22788.606887	+ 23580.510367
		ハイメツセキ	= 791.903480	
		メツセキ	= 395.951740	

2 LOT

チヨメイ	X	Y	(X-X0)*(YN-1-Y0)	(XN-1-X0)*(Y-Y0)
X0.Y0	- 151900.000	- 37900.000		
12	- 151910.558	- 37965.298		
2	- 151900.384	- 37945.523	+ 57.723432	+ 480.631834
3	- 151917.061	- 37937.604	+ 776.667903	+ 33.241936
13	- 151926.737	- 37957.393	+ 1005.418148	+ 979.181973
12	- 151910.558	- 37965.298	+ 605.955294	+ 1745.872626
			+ 2445.764777	+ 3238.928369
		ハイメツセキ	= 793.163592	
		メツセキ	= 396.581796	

3 LOT

チヨメイ	X	Y	(X-X0)*(YN-1-Y0)	(XN-1-X0)*(Y-Y0)
X0.Y0	- 151900.000	- 37900.000		
13	- 151926.737	- 37957.393		
3	- 151917.061	- 37937.604	+ 979.181973	+ 1005.418148
4	- 151922.304	- 37935.037	+ 838.719616	+ 597.766257
14	- 151931.990	- 37954.827	+ 1120.833630	+ 1222.861408
13	- 151926.737	- 37957.393	+ 1465.909499	+ 1836.002070
			+ 4404.644718	+ 4662.047883
		ハイメツセキ	= 257.403165	
		メツセキ	= 128.701582	

4 LOT

チヨメイ	X	Y	(X-X0)*(YN-1-Y0)	(XN-1-X0)*(Y-Y0)
X0.Y0	- 151900.000	- 37900.000		
14	- 151931.990	- 37954.827		
4	- 151922.304	- 37935.037	+ 1222.861408	+ 1120.833630
357-31	- 151968.681	- 37912.334	+ 2406.376197	+ 275.097536
357-35	- 151974.770	- 37924.590	+ 922.213180	+ 1688.865790
15	- 151973.150	- 37934.716	+ 1798.758500	+ 2595.715320
14	- 151931.990	- 37954.827	+ 1110.564840	+ 4010.595050
			+ 7460.774125	+ 9691.107326
		ハイメツセキ	= 2230.333201	
		メツセキ	= 1115.166600	



\*\*\*\*\* カクホツ メンヒキ ケイリン \*\*\*\*\*

5 LOT

アノメイ	X	Y	(X-X0)*(YN-1-Y0)	(XN-1-X0)*(Y-Y0)
X0.Y0	- 151900.000	- 37800.000		
857-36	- 151975.774	- 37923.235		
857-32	- 151970.045	- 37911.666	+ 8631.995575	+ 8461.379484
857-3	- 151997.531	- 37898.211	+ 10890.896646	+ 6879.189495
857-4	- 151999.330	- 37897.344	+ 9755.298630	+ 9494.057664
857-5	- 152001.163	- 37896.547	+ 9847.611072	+ 9590.013510
857-6	- 152003.015	- 37895.792	+ 9945.789205	+ 9690.606096
857-7	- 152004.896	- 37895.104	+ 10048.197632	+ 9797.138560
857-8	- 152006.792	- 37894.466	+ 10156.346368	+ 9909.105536
857-9	- 152008.710	- 37893.883	+ 10269.398860	+ 10025.953336
857-10	- 152010.639	- 37893.350	+ 10387.121237	+ 10148.078500
857-11	- 152012.579	- 37892.865	+ 10509.249650	+ 10274.490735
5	- 152013.937	- 37892.584	+ 10580.759505	+ 10423.014136
16	- 152008.179	- 37928.414	+ 10015.644536	+ 14631.105918
857-36	- 151975.774	- 37923.235	+ 9730.442436	+ 13331.439065

+130768.751352 +132655.572035

ハイ メンヒキ = 1886.820683  
メンヒキ = 943.410341

6 LOT

アノメイ	X	Y	(X-X0)*(YN-1-Y0)	(XN-1-X0)*(Y-Y0)
X0.Y0	- 152000.000	- 37800.000		
16	- 152008.179	- 37928.414		
5	- 152013.937	- 37892.584	+ 1789.705918	+ 757.244536
857-12	- 152014.539	- 37892.460	+ 1346.078776	+ 1288.615020
857-13	- 152016.504	- 37892.084	+ 1525.959840	+ 1338.809276
857-14	- 152018.479	- 37891.780	+ 1701.620236	+ 1514.737120
857-15	- 152020.460	- 37891.525	+ 1877.818800	+ 1691.290475
857-16	- 152022.451	- 37891.326	+ 2054.827775	+ 1868.529960
857-17	- 152024.446	- 37891.190	+ 2232.555396	+ 2047.306690
5	- 152025.241	- 37891.156	+ 2301.726790	+ 2228.399576
17	- 152018.952	- 37930.136	+ 1727.588512	+ 3284.762776
16	- 152008.179	- 37928.414	+ 1064.382344	+ 2433.702128

+ 17622.264387 + 18453.397557

ハイ メンヒキ = 831.133170  
メンヒキ = 415.566585

7 LOT

アノメイ	X	Y	(X-X0)*(YN-1-Y0)	(XN-1-X0)*(Y-Y0)
X0.Y0	- 152000.000	- 37800.000		
19	- 152022.196	- 37910.027		
5	- 152025.241	- 37891.156	+ 2777.191507	+ 2023.298576

\*\*\*\*\* カワシツ メンセキ ケイリフ \*\*\*\*\*

テウメイ	X	Y	(X-X0)*(YN-1-Y0)	(XN-1-X0)*(Y-Y0)
857-18	- 152026.443	- 37891.105	+ 2410.438108	+ 2299.581305
857-19	- 152028.442	- 37891.086	+ 2591.208410	+ 2408.587098
857-20	- 152030.441	- 37891.116	+ 2772.748926	+ 2591.521272
857-21	- 152032.442	- 37891.214	+ 2955.985272	+ 2776.645374
857-22	- 152034.434	- 37891.347	+ 3140.862876	+ 2963.479374
857-23	- 152036.423	- 37891.555	+ 3327.131781	+ 3152.604870
857-24	- 152038.078	- 37891.777	+ 3486.231290	+ 3342.793671
7	- 152034.826	- 37912.048	+ 3196.225802	+ 4266.563744
19	- 152022.196	- 37910.027	+ 2487.017408	+ 3831.800302
			+ 29145.041380	+ 29656.875586
		ハイ メンセキ =	511.834206	
		メンセキ =	255.917103	

3 LOT

テウメイ	X	Y	(X-X0)*(YN-1-Y0)	(XN-1-X0)*(Y-Y0)
X0.Y0	- 152000.000	- 37900.000		
18	- 152021.353	- 37915.253		
19	- 152022.196	- 37910.027	+ 338.555588	+ 214.106531
7	- 152034.826	- 37912.048	+ 349.200302	+ 267.417408
8	- 152033.987	- 37917.275	+ 409.475376	+ 601.619150
18	- 152021.353	- 37915.253	+ 368.873075	+ 518.403711
			+ 1466.104341	+ 1601.546800
		ハイ メンセキ =	135.442459	
		メンセキ =	67.721229	

9 LOT

テウメイ	X	Y	(X-X0)*(YN-1-Y0)	(XN-1-X0)*(Y-Y0)
X0.Y0	- 152000.000	- 37900.000		
17	- 152018.952	- 37930.136		
18	- 152021.353	- 37915.253	+ 643.494008	+ 289.074856
8	- 152033.987	- 37917.275	+ 518.403711	+ 368.873075
857-33	- 152031.600	- 37932.158	+ 545.890000	+ 1092.953946
17	- 152018.952	- 37930.136	+ 609.458416	+ 952.297600
			+ 2317.246135	+ 2703.199477
		ハイ メンセキ =	385.953342	
		メンセキ =	192.976671	

10 LOT

テウメイ	X	Y	(X-X0)*(YN-1-Y0)	(XN-1-X0)*(Y-Y0)
X0.Y0	- 152000.000	- 37900.000		
21	- 152024.931	- 37947.586		
29	- 152027.284	- 37932.990	+ 1298.336424	+ 822.473690

\*\*\*\*\* 角クヒツ メンベキ ケイリク \*\*\*\*\*

アソメイ	X	Y	(X-X0)*(YN-1-Y0)	(XN-1-X0)*(Y-Y0)
957-37	- 152029.880	- 37933.405	+ 985.741200	+ 911.422020
357-38	- 152027.527	- 37948.004	+ 919.539435	+ 1434.359520
21	- 152024.931	- 37947.586	+ 1196.787724	+ 1309.899822
			+ 4400.404783	+ 4478.155052
		ハイ メンベキ	= 77.750269	
		メンベキ	= 38.875134	

11 LOT

アソメイ	X	Y	(X-X0)*(YN-1-Y0)	(XN-1-X0)*(Y-Y0)
X0.Y0	- 151900.000	- 37900.000		
9	- 151967.187	- 37971.994		
B57-35	- 151974.770	- 37924.590	+ 5382.991380	+ 1652.128330
20	- 152027.284	- 37932.990	+ 3129.913560	+ 2466.662300
21	- 152024.931	- 37947.586	+ 4121.473690	+ 6056.936424
B57-34	- 152029.010	- 37948.243	+ 6139.069860	+ 6027.046233
K81	- 152028.906	- 37948.873	+ 6218.812153	+ 6305.105730
B57-25	- 152022.411	- 37989.349	+ 5982.592803	+ 11517.622194
B57-26	- 152010.785	- 37987.399	+ 9898.528965	+ 10698.598989
B57-27	- 152006.791	- 37984.190	+ 9333.426609	+ 9326.989150
9	- 151967.187	- 37971.994	+ 5656.473530	+ 7688.311254
			+ 55863.282555	+ 61739.400604
		ハイ メンベキ	= 5876.118049	
		メンベキ	= 2938.059024	

12 LOT

アソメイ	X	Y	(X-X0)*(YN-1-Y0)	(XN-1-X0)*(Y-Y0)
X0.Y0	- 151900.000	- 37900.000		
10	- 151934.626	- 37973.529		
13	- 151926.737	- 37957.393	+ 1965.944873	+ 1987.290018
15	- 151973.150	- 37934.716	+ 4198.297950	+ 928.201692
9	- 151967.187	- 37971.994	+ 2332.463892	+ 5266.361100
B57-28	- 151949.117	- 37966.430	+ 3536.129298	+ 4463.232410
10	- 151934.626	- 37973.529	+ 2300.205180	+ 3611.523893
			+ 14333.041193	+ 16256.609113
		ハイ メンベキ	= 1923.567920	
		メンベキ	= 961.783960	

13 LOT

アソメイ	X	Y	(X-X0)*(YN-1-Y0)	(XN-1-X0)*(Y-Y0)
X0.Y0	- 151900.000	- 37900.000		
11	- 151918.459	- 37981.449		
12	- 151910.558	- 37965.298	+ 859.938542	+ 1205.335782

\*\*\*\*\* ちくせつ めんせき ケイリン \*\*\*\*\*

アコメイ	X	Y	(X-X0)*(YN-1-Y0)	(XN-1-X0)*(Y-Y0)
13	- 151926.737	- 37957.393	+ 1745.872626	+ 605.955294
10	- 151934.626	- 37973.529	+ 1987.290018	+ 1965.944873
11	- 151918.459	- 37981.449	+ 1357.271811	+ 2820.253074
			+ 5950.372997	+ 6597.489023
		ハイ めんせき =	647.116026	
		メんせき =	323.558013	

14 LOT

アコメイ	X	Y	(X-X0)*(YN-1-Y0)	(XN-1-X0)*(Y-Y0)
X0.Y0	- 151800.000	- 37900.000		
B57-30	- 151900.991	- 37986.673		
1	- 151894.394	- 37973.195	+ 8181.411162	+ 7392.036245
12	- 151910.558	- 37965.298	+ 8092.292810	+ 6163.739412
11	- 151918.459	- 37981.449	+ 7735.135782	+ 9004.838542
B57-29	- 151904.986	- 37988.049	+ 8551.004714	+ 10430.196491
B57-30	- 151900.991	- 37986.673	+ 8892.156559	+ 9099.451578
			+ 41452.001027	+ 42090.262268
		ハイ めんせき =	638.261241	
		メんせき =	319.130620	

スロ (スロZ-6号)

アコメイ	X	Y	(X-X0)*(YN-1-Y0)	(XN-1-X0)*(Y-Y0)
X0.Y0	- 151900.000	- 37900.000		
B57-31	- 151968.681	- 37912.334		
B57-32	- 151970.045	- 37911.666	+ 863.935030	+ 801.232546
B57-36	- 151975.774	- 37923.235	+ 883.979484	+ 1627.495575
B57-33	- 152031.600	- 37932.158	+ 3057.726000	+ 2436.740292
K80	- 152029.363	- 37946.101	+ 4160.055354	+ 6066.891600
B57-34	- 152029.010	- 37948.243	+ 5947.490010	+ 6240.859209
B57-38	- 152027.527	- 37948.004	+ 6152.285061	+ 6192.996040
B57-37	- 152029.880	- 37933.405	+ 6234.759520	+ 4260.039435
B57-35	- 151974.770	- 37924.590	+ 2497.691850	+ 3193.749200
B57-31	- 151968.681	- 37912.334	+ 1688.865790	+ 922.213180
			+ 31486.788099	+ 31742.217077
		ハイ めんせき =	255.428978	
		メんせき =	127.714489	

スロ 19

アコメイ	X	Y	(X-X0)*(YN-1-Y0)	(XN-1-X0)*(Y-Y0)
X0.Y0	- 151900.000	- 37800.000		
B57-39	- 152040.413	- 37877.219		
B57-24	- 152038.078	- 37891.777	+ 10662.245082	+ 12886.683901

\*\*\*\*\* カワトツ メンピキ ケイサン \*\*\*\*\*

年次	X	Y	(X-X0)*(YN-1-Y0)	(XN-1-X0)*(Y-Y0)
857-23	- 152036.423	- 37891.555	+ 12520.493671	+ 12641.731290
857-22	- 152034.474	- 37891.347	+ 12308.104870	+ 12461.831781
857-21	- 152032.442	- 37891.214	+ 12098.179374	+ 12262.262876
857-20	- 152030.441	- 37891.116	+ 11898.045374	+ 12067.585272
857-19	- 152028.442	- 37891.086	+ 11703.121272	+ 11881.348926
857-18	- 152026.443	- 37891.105	+ 11517.187098	+ 11701.708410
857-17	- 152024.446	- 37891.190	+ 11337.652830	+ 11530.337170
857-16	- 152022.451	- 37891.326	+ 11166.306690	+ 11365.155396
857-15	- 152020.460	- 37891.525	+ 11001.129960	+ 11207.327775
857-14	- 152018.479	- 37891.780	+ 10843.790475	+ 11055.818800
857-13	- 152016.504	- 37892.084	+ 10692.737120	+ 10910.020236
857-12	- 152014.539	- 37892.460	+ 10547.209276	+ 10771.959840
857-11	- 152012.579	- 37892.865	+ 10409.054340	+ 10636.664235
857-10	- 152010.639	- 37893.350	+ 10274.490735	+ 10509.249650
857-9	- 152008.710	- 37893.883	+ 10148.078500	+ 10387.121237
857-8	- 152006.792	- 37894.466	+ 10025.953336	+ 10269.398860
857-7	- 152004.896	- 37895.104	+ 9909.105536	+ 10156.346368
857-6	- 152003.015	- 37895.792	+ 9797.138560	+ 10048.197632
857-5	- 152001.163	- 37896.547	+ 9690.606096	+ 9945.789205
857-4	- 151999.330	- 37897.344	+ 9590.013510	+ 9847.611072
857-3	- 151997.531	- 37898.211	+ 9494.057664	+ 9755.298630
857-39	- 152040.413	- 37877.219	+ 13790.101143	+ 7531.246289

+251424.802512      +251830.694851

ハイ      メンピキ      =      405.892339  
 メンピキ      =      202.946169

1 追加

年次	X	Y	(X-X0)*(YN-1-Y0)	(XN-1-X0)*(Y-Y0)
X0.Y0	- 151900.000	- 37900.000		
857-1	- 151902.307	- 37989.361		
857-29	- 151904.986	- 37988.049	+ 445.553946	+ 203.129043
857-30	- 151900.991	- 37986.673	+ 87.256559	+ 432.151578
857-1	- 151902.307	- 37989.361	+ 199.954611	+ 88.556751

+ 732.765116      + 723.837372

ハイ      メンピキ      =      8.927744  
 メンピキ      =      4.463872