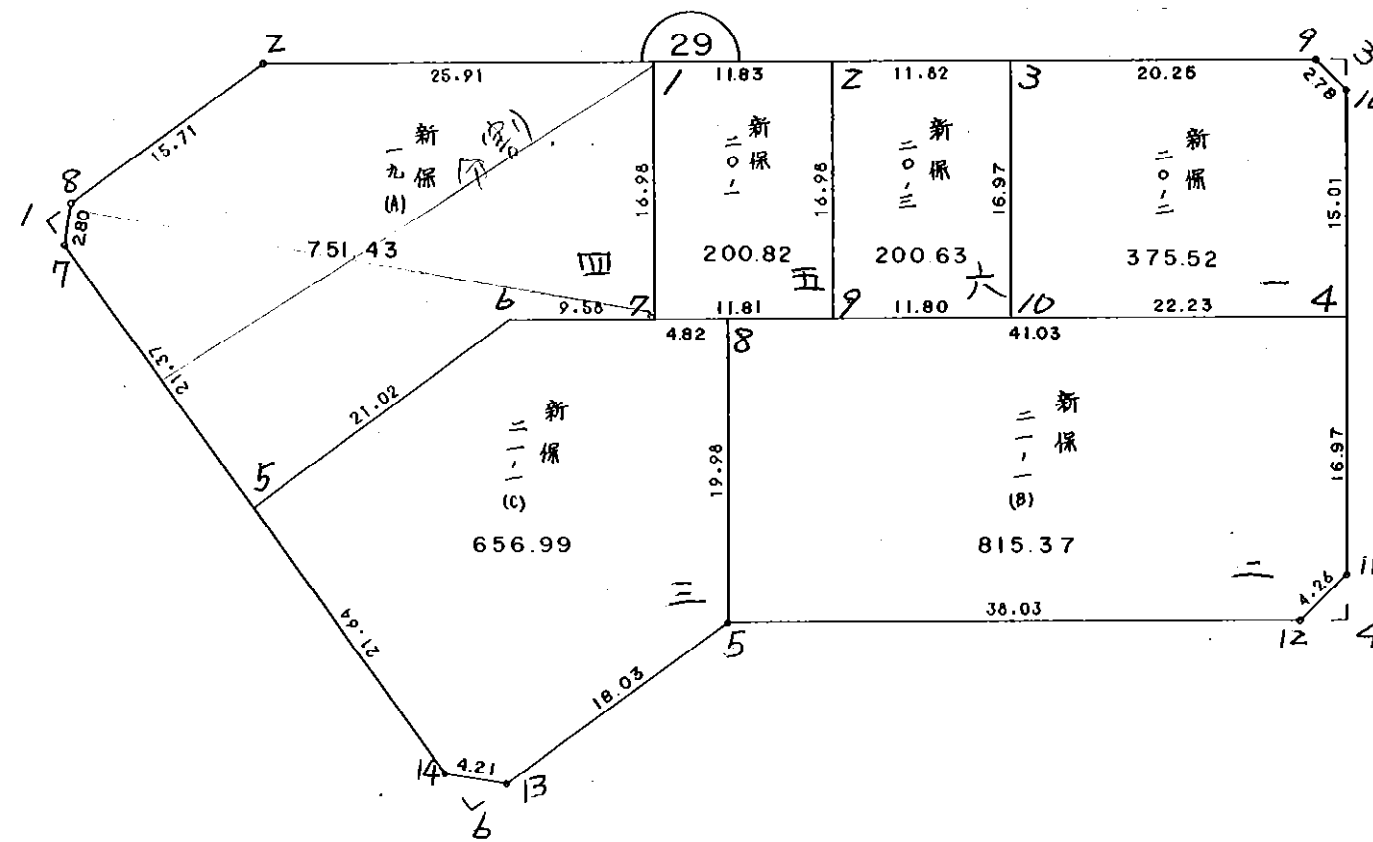
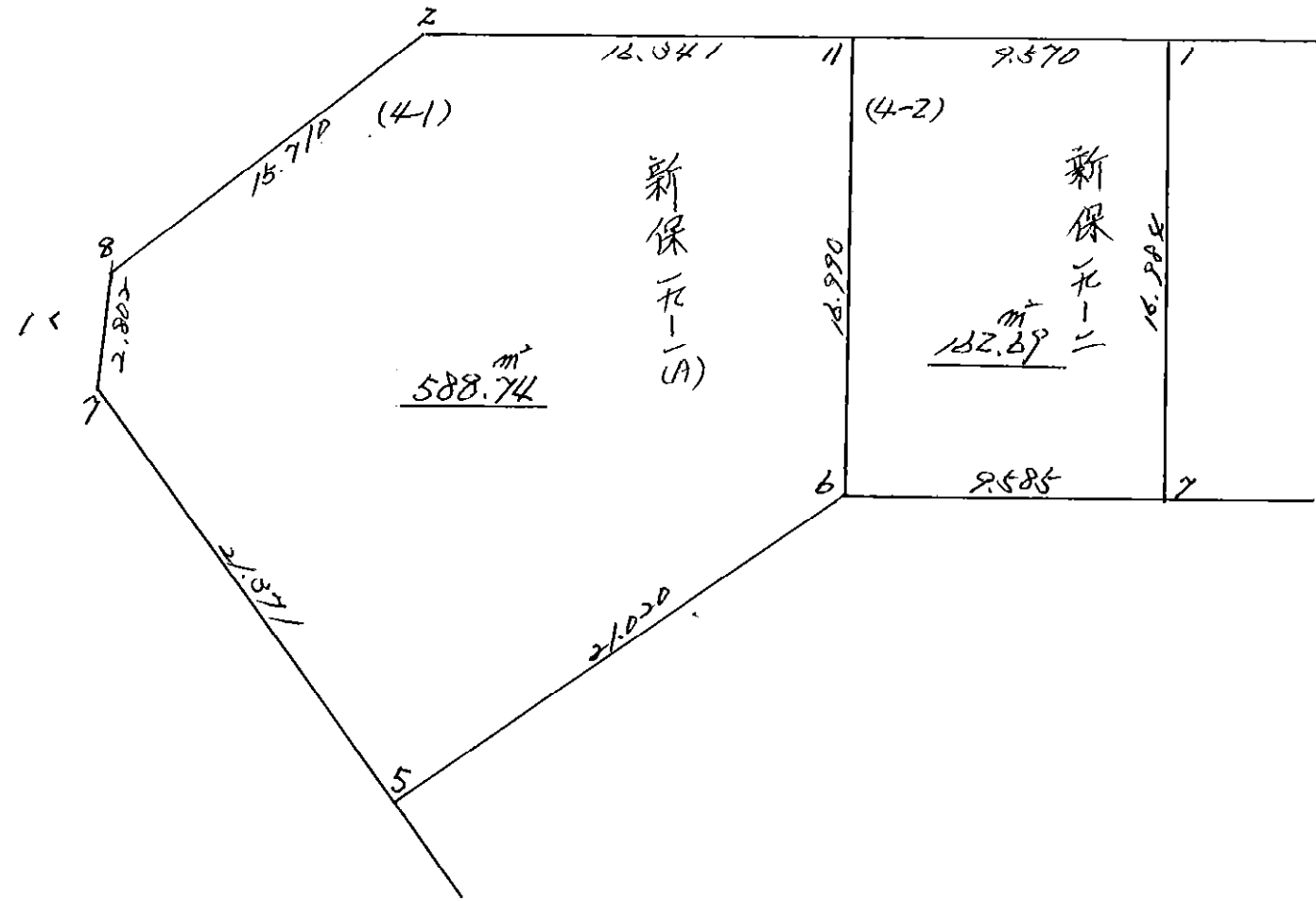


BNo. 29



BNo 29



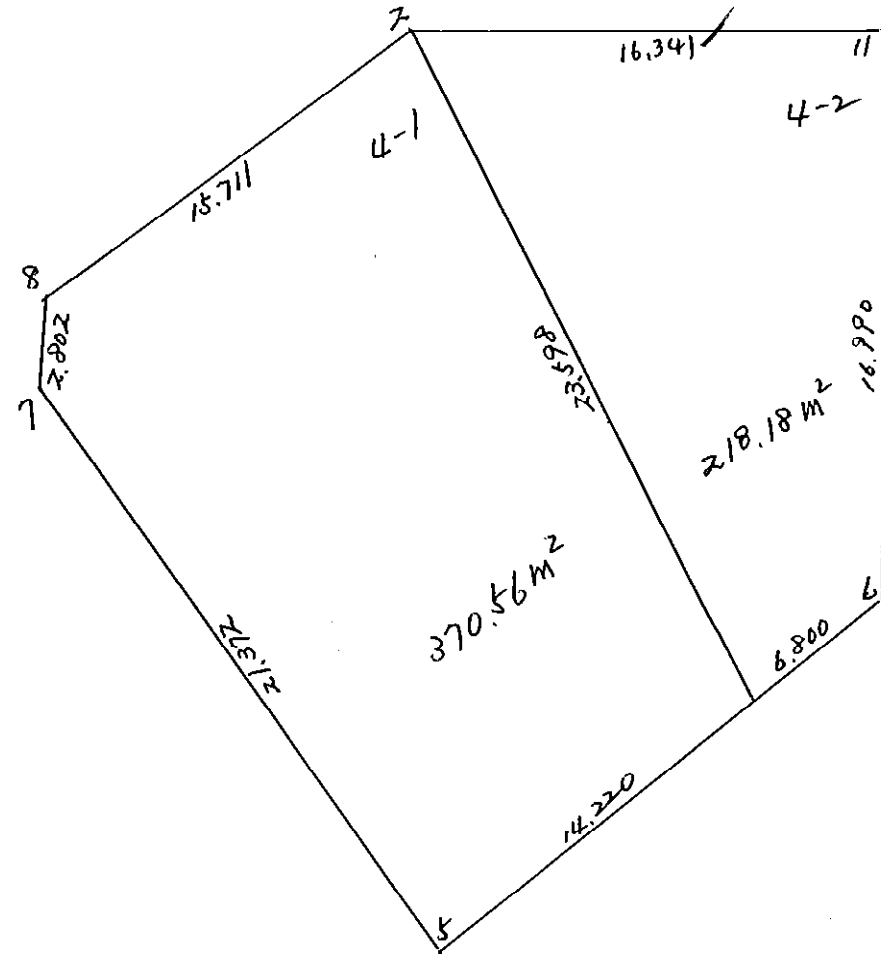
4-1 LOT

POINT NO. X _o Y _o	X	Y	(X-X _o) (Y _{N-1} -Y _o)	(X _{N-1} -X _o) (Y-Y _o)
5	-151594.683	-37966.228		
B297	-151575.487	-37975.622	4999.353036	7160.117826
B293	-151572.835	-37974.716	5507.928370	5640.086692
B292	-151565.936	-37960.602	4926.474176	4413.946670
11	-151568.688	-37944.494	4162.630176	2933.756384
6	-151585.436	-37947.351	3801.389384	3252.445488
5	-151594.683	-37966.228	4483.334733	5658.255408
			27881.109875	29058.608468
			1/2 合計=	1177.498593
			合計=	588.749296

4-2 LOT

POINT NO. X _o Y _o	X	Y	(X-X _o) (Y _{N-1} -Y _o)	(X _{N-1} -X _o) (Y-Y _o)
11	-151568.688	-37944.494		
1	-151570.300	-37935.061	3127.928200	2408.269968
7	-151587.045	-37937.902	3051.884745	2664.510600
6	-151585.436	-37947.351	3238.195272	4121.667795
11	-151568.688	-37944.494	3252.445488	3801.389384
			12670.453705	12995.837747
			1/2 合計=	325.384042
			合計=	162.692021

29 BLOK



29 BLOCK

元/NO. X ₀ , Y ₀ =	X	Y	(X-X ₀) (YN-1-Y ₀)	(XN-1-X ₀) (Y-Y ₀)
8	-151500.000	-37900.000		
2	-151572.835	-37974.716		
11	-151565.936	-37960.602	4926.474176	4413.946670
6	-151568.688	-37944.494	4162.630176	2933.756384
5	-151585.436	-37947.351	3801.389384	3252.445488
7	-151594.683	-37966.228	4483.334733	5658.255408
8	-151575.487	-37975.622	4999.353036	7160.117826
8	-151572.835	-37974.716	5507.928370	5640.086692
			27881.109875	29058.608468
			1/2 欠付 =	1177.498593
			欠付 =	588.749297

4-1 LOT

元/NO. X ₀ , Y ₀ =	X	Y	(X-X ₀) (YN-1-Y ₀)	(XN-1-X ₀) (Y-Y ₀)
8	-151500.000	-37900.000		
2	-151572.835	-37974.716		
100	-151565.936	-37960.602	4926.474176	4413.946670
5	-151588.427	-37953.458	5358.853054	3524.806688
7	-151594.683	-37966.228	5061.563814	5856.343356
8	-151575.487	-37975.622	4999.353036	7160.117826
8	-151572.835	-37974.716	5507.928370	5640.086692
			25854.172450	26595.301232
			1/2 欠付 =	741.128782
			欠付 =	370.564391

4-2 LOT

元/NO. X ₀ , Y ₀ =	X	Y	(X-X ₀) (YN-1-Y ₀)	(XN-1-X ₀) (Y-Y ₀)
2	-151500.000	-37900.000		
11	-151565.936	-37960.602		
6	-151568.688	-37944.494	4162.630176	2933.756384
100	-151585.436	-37947.351	3801.389384	3252.445488
2	-151588.427	-37953.458	4187.106877	4567.237688
2	-151594.683	-37966.228	3524.806688	5358.853054
			15675.933125	16112.292614
			1/2 欠付 =	436.359489
			欠付 =	218.179745

218.18 ... 換地計画により控分

***** カクヒツ メンセキ シユウケイ ヒヨウ *****

カクヒツ	メンセキ	スミナリ	メンセキ
29 BLOCK	3000.77		
1 LOT	375.52		
2 LOT	315.37		
3 LOT	656.99		
4 LOT	754.43		
5 LOT	200.82		
6 LOT	200.63		
1 スミナリ			1.96
3 スミナリ			1.93
4 スミナリ			4.53
6 スミナリ			4.45
コウケイ =	3000.76		12.87

4-1 Lot
11-7 Lot

588.74
162.69

***** カクヒツ メンベキ ケイリン *****

29 BLOCK

テコメイ	X	Y	(X-X0)*(YN-1-Y0)	(XN-1-X0)*(Y-Y0)
X0.Y0	- 151500.000	- 37800.000		
B29-7	- 151575.487	- 37975.622		
B29-8	- 151572.835	- 37974.716	+ 12791.428370	+ 13188.786692
B29-2	- 151565.936	- 37960.602	+ 11520.074176	+ 11697.446670
B29-9	- 151577.696	- 37891.775	+ 12478.132992	+ 6051.276400
B29-10	- 151579.959	- 37890.160	+ 7338.237225	+ 7005.071360
B29-11	- 151611.493	- 37895.556	+ 10052.208880	+ 7640.562204
B29-12	- 151613.930	- 37899.052	+ 10886.695080	+ 11043.604636
B29-5	- 151607.546	- 37936.542	+ 10652.646392	+ 15556.230060
B29-13	- 151615.500	- 37952.729	+ 15770.601000	+ 16425.393034
B29-14	- 151614.119	- 37956.716	+ 17429.280751	+ 18100.698000
B29-7	- 151575.487	- 37975.622	+ 11830.020692	+ 20041.807018
			+120749.325558	+126750.876074
		ハイ メンベキ =	6001.550516	
		メンベキ =	3000.775258	

1 LOT

テコメイ	X	Y	(X-X0)*(YN-1-Y0)	(XN-1-X0)*(Y-Y0)
X0.Y0	- 151500.000	- 37800.000		
3	- 151574.284	- 37911.743		
B29-9	- 151577.696	- 37891.775	+ 8681.984128	+ 6817.414100
B29-10	- 151579.959	- 37890.160	+ 7338.237225	+ 7005.071360
4	- 151594.759	- 37892.692	+ 8543.471440	+ 7411.559628
10	- 151591.019	- 37914.613	+ 8436.733148	+ 10860.613267
3	- 151574.284	- 37911.743	+ 8513.912092	+ 10170.736117
			+ 41514.338033	+ 42265.394472
		ハイ メンベキ =	751.056439	
		メンベキ =	375.528219	

2 LOT

テコメイ	X	Y	(X-X0)*(YN-1-Y0)	(XN-1-X0)*(Y-Y0)
X0.Y0	- 151500.000	- 37800.000		
8	- 151587.857	- 37933.143		
4	- 151594.759	- 37892.692	+ 12616.497537	+ 8143.641044
B29-11	- 151611.493	- 37895.556	+ 10334.509156	+ 9054.791004
B29-12	- 151613.930	- 37899.052	+ 10886.695080	+ 11043.604636
B29-5	- 151607.546	- 37936.542	+ 10652.646392	+ 15556.230060
8	- 151587.857	- 37933.143	+ 11996.170494	+ 14318.997078
			+ 56486.518659	+ 58117.263822
		ハイ メンベキ =	1630.745163	
		メンベキ =	815.372581	

***** カクヒツ メンベト ケイリシ *****

3 LOT

アコメイ X0.Y0	X	Y	(X-X0)*(YN-1-Y0)	(XN-1-X0)*(Y-Y0)
5	- 151500.000	- 37900.000		
6	- 151594.683	- 37966.228		
7	- 151585.436	- 37947.351	+ 5658.255408	+ 4483.334733
8	- 151587.045	- 37937.902	+ 4121.667795	+ 3238.195272
9	- 151587.857	- 37933.143	+ 3329.956014	+ 2884.932435
B29-5	- 151607.546	- 37936.542	+ 3564.397078	+ 3210.470494
B29-13	- 151615.500	- 37952.729	+ 4220.601000	+ 5670.793034
B29-14	- 151614.119	- 37956.716	+ 6017.380751	+ 6550.698000
5	- 151594.683	- 37966.228	+ 5370.041028	+ 7557.873132
			+ 32282.299074	+ 33596.297100
		ハイ メンベト =	1313.998026	
		メンベト =	656.999013	

4 LOT

アコメイ X0.Y0	X	Y	(X-X0)*(YN-1-Y0)	(XN-1-X0)*(Y-Y0)
B29-7	- 151500.000	- 37900.000		
B29-8	- 151575.487	- 37975.622		
B29-2	- 151572.835	- 37974.716	+ 5507.928370	+ 5640.086692
1	- 151565.936	- 37960.602	+ 4926.474176	+ 4413.946670
7	- 151570.300	- 37935.061	+ 4260.320600	+ 2311.782096
7	- 151587.045	- 37937.902	+ 3051.884745	+ 2664.510600
6	- 151585.436	- 37947.351	+ 3238.195272	+ 4121.667795
5	- 151594.683	- 37966.228	+ 4483.334733	+ 5658.255408
B29-7	- 151575.487	- 37975.622	+ 4999.353036	+ 7160.117826
			+ 30467.490932	+ 31970.367087
		ハイ メンベト =	1502.876155	
		メンベト =	751.438077	

5 LOT

アコメイ X0.Y0	X	Y	(X-X0)*(YN-1-Y0)	(XN-1-X0)*(Y-Y0)
1	- 151500.000	- 37900.000		
2	- 151570.300	- 37935.061		
2	- 151572.293	- 37923.395	+ 2534.664873	+ 1644.668500
9	- 151589.032	- 37926.255	+ 2082.903640	+ 1898.052715
7	- 151587.045	- 37937.902	+ 2285.366475	+ 3374.490864
1	- 151570.300	- 37935.061	+ 2664.510600	+ 3051.884745
			+ 9567.445588	+ 9969.096824
		ハイ メンベト =	401.651236	
		メンベト =	200.825618	

***** カクヒツ メンヒキ ケイリン *****

6 LOT

アノメイ	X	Y	(X-X0)*(YN-1-Y0)	(XN-1-X0)*(Y-Y0)
X0.Y0	- 151500.000	- 37900.000		
2	- 151572.293	- 37923.395		
3	- 151574.284	- 37911.743	+ 1737.874180	+ 848.936699
10	- 151591.019	- 37914.613	+ 1068.836117	+ 1085.512092
9	- 151589.032	- 37926.255	+ 1301.024616	+ 2389.703845
?	- 151572.293	- 37923.395	+ 1898.052715	+ 2082.903640
			+ 6005.787628	+ 6407.056276
		ハイ メンヒキ =	401.268648	
		メンヒキ =	200.634324	

1 入ミナリ

アノメイ	X	Y	(X-X0)*(YN-1-Y0)	(XN-1-X0)*(Y-Y0)
X0.Y0	- 151500.000	- 37900.000		
B29-1	- 151573.704	- 37976.495		
B29-7	- 151575.487	- 37975.622	+ 5774.378065	+ 5573.643888
B29-8	- 151572.835	- 37974.716	+ 5507.928370	+ 5640.086692
B29-1	- 151573.704	- 37976.495	+ 5506.868064	+ 5571.513325
			+ 16789.174499	+ 16785.243905
		ハイ メンヒキ =	3.930594	
		メンヒキ =	1.965297	

3 入ミナリ

アノメイ	X	Y	(X-X0)*(YN-1-Y0)	(XN-1-X0)*(Y-Y0)
X0.Y0	- 151500.000	- 37800.000		
B29-3	- 151578.028	- 37889.830		
B29-9	- 151577.696	- 37891.775	+ 6979.431680	+ 7161.019700
B29-10	- 151579.959	- 37890.160	+ 7338.237225	+ 7005.071360
B29-3	- 151578.028	- 37889.830	+ 7035.004480	+ 7182.716970
			+ 21352.673385	+ 21348.808030
		ハイ メンヒキ =	3.865355	
		メンヒキ =	1.932677	

4 入ミナリ

アノメイ	X	Y	(X-X0)*(YN-1-Y0)	(XN-1-X0)*(Y-Y0)
X0.Y0	- 151600.000	- 37800.000		
B29-4	- 151614.439	- 37896.060		
B29-11	- 151611.493	- 37895.556	+ 1104.017580	+ 1379.733084
B29-12	- 151613.930	- 37899.052	+ 1331.095080	+ 1138.404636
B29-4	- 151614.439	- 37896.060	+ 1430.211828	+ 1338.115800
			+ 3865.324488	+ 3856.253520
		ハイ メンヒキ =	9.070968	
		メンヒキ =	4.535484	

***** カクヒツ メンセキ ケイサン *****

6 スミリ

番号	X	Y	(X-X0)*(YN-1-Y0)	(XN-1-X0)*(Y-Y0)
X0.Y0	- 151600.000	- 37900.000		
B29-6	- 151616.812	- 37955.398		
B29-13	- 151615.500	- 37952.729	+ 858.669000	+ 886.479948
B29-14	- 151614.119	- 37956.716	+ 744.480751	+ 879.098000
B29-6	- 151616.812	- 37955.398	+ 953.509392	+ 782.164362
			+ 2556.659143	+ 2547.742310
		ハイメンセキ	= 8.916833	
		メンセキ	= 4.458416	