

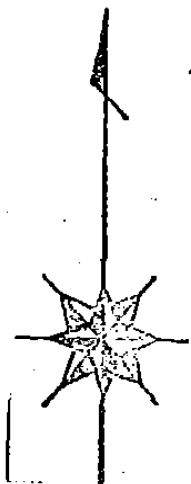
街区略図

工区

ブロック

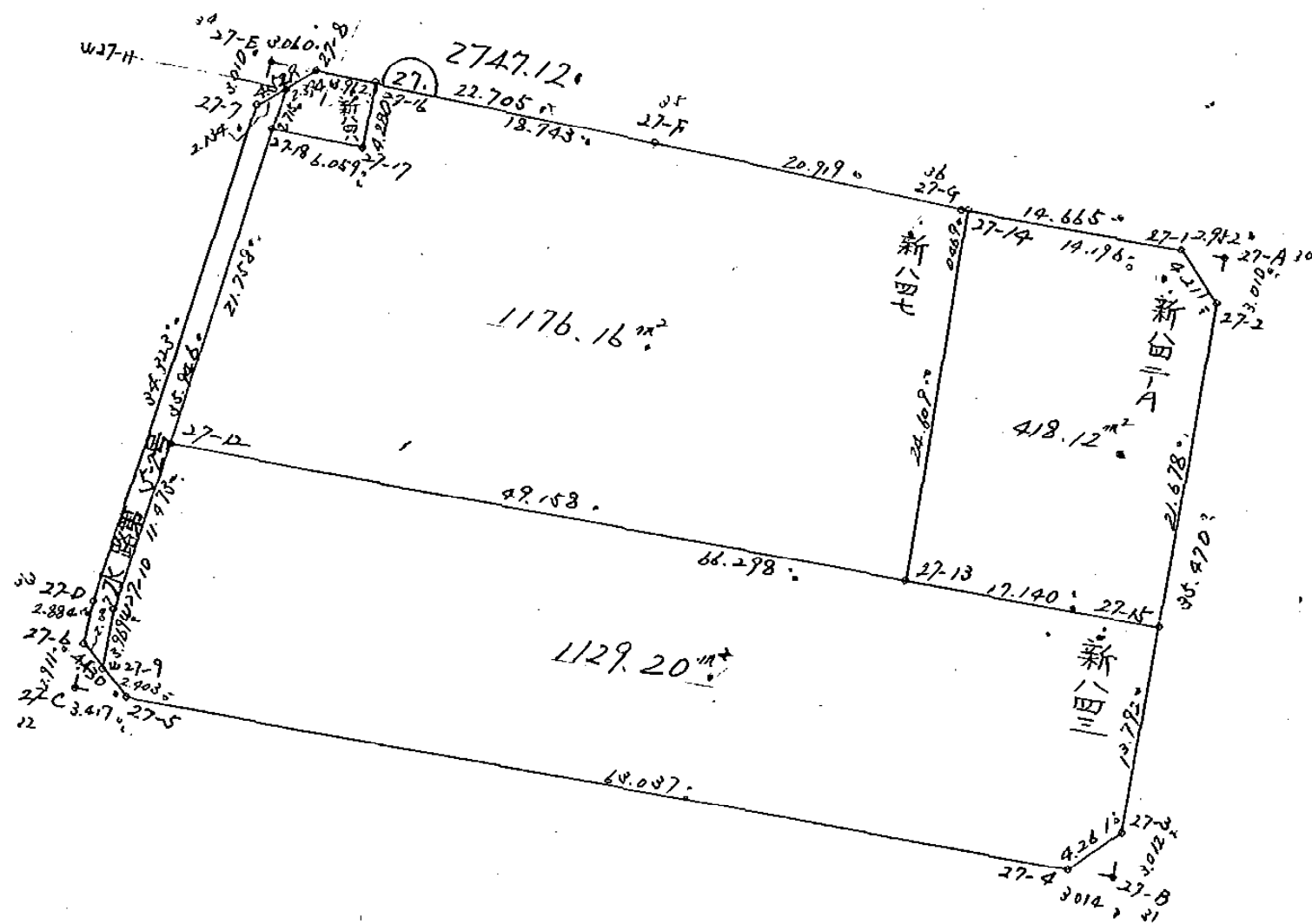
記入者

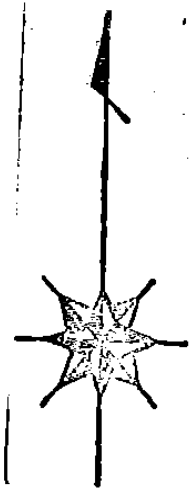
点検者



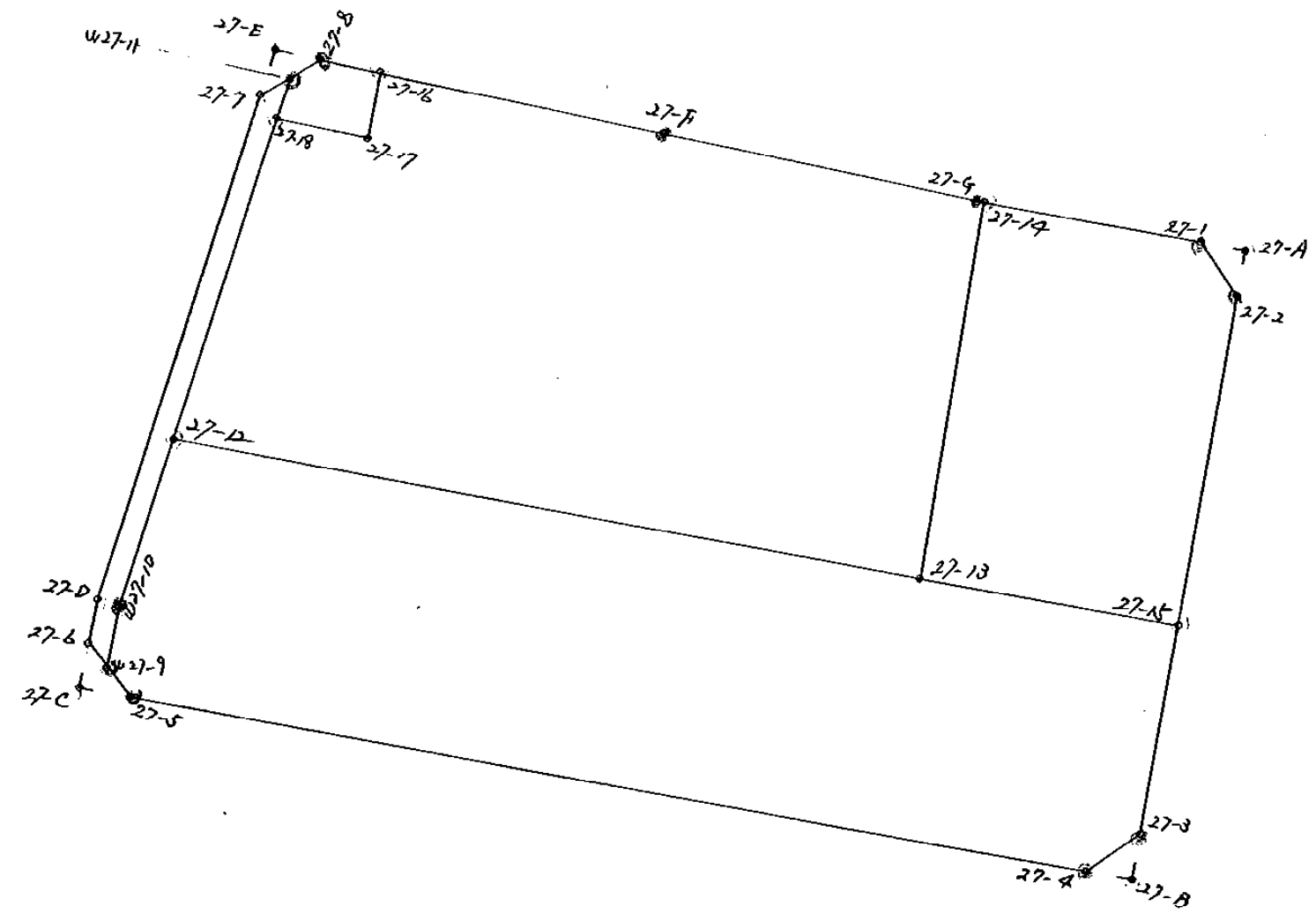
277007

S=1:500





277"211)
 杭打図 S=1:500



| 凡 | 例 |
|---------|---|
| ベ ン キ | ⊙ |
| ラ ベ ル | ○ |
| 鉄 | ○ |
| コンクリート杭 | ○ |
| 木 杭 | ○ |

27-17, 27-18 は同一所有無杭トシ

27 ブロック

** 倍横距法面積計算 **

| 観測点 | 挟角 | 方向角 | 距離 | 緯距 | 経距 | X | Y | 測点 | 倍横距 | 倍面積 |
|----------|------------|-----------|---------|---------|---------|--------------|-------------|----------|---------|--------------|
| ()27-8 | 138-39-18 | 240-11-23 | 2.394 | -1.190 | -2.077 | -151,590.583 | -38,765.624 | W.27-11 | -2.077 | 2.471630 |
| W.27-11 | 137-41-59 | 197-53-22 | 35.946 | -34.208 | -11.042 | -151,624.791 | -38,776.666 | W.27-10 | -15.196 | 519.824768 |
| W.27-10 | 173-00-06 | 190-53-28 | 3.969 | -3.898 | -0.750 | -151,628.689 | -38,777.416 | W.27-9 | -26.988 | 105.199224 |
| W.27-9 | 130-27-37 | 141-21-05 | 2.403 | -1.877 | 1.501 | -151,630.566 | -38,775.915 | ()27-5 | -26.237 | 49.246849 |
| ()27-5 | 138-56-21 | 100-17-26 | 63.037 | -11.261 | 62.023 | -151,641.827 | -38,713.892 | ()27-4 | 37.287 | -419.888907 |
| ()27-4 | 135-00-18 | 55-17-44 | 4.261 | 2.426 | 3.503 | -151,639.401 | -38,710.389 | ()27-3 | 102.813 | 249.424338 |
| ()27-3 | 134-58-17 | 10-16-01 | 35.470 | 34.902 | 6.322 | -151,604.499 | -38,704.067 | ()27-2 | 112.638 | 3931.291476 |
| ()27-2 | 135-29-45 | 325-45-46 | 4.211 | 3.481 | -2.369 | -151,601.018 | -38,706.436 | ()27-1 | 116.591 | 405.853271 |
| ()27-1 | 134-21-42 | 280-07-28 | 14.665 | 2.578 | -14.437 | -151,598.440 | -38,720.873 | ()27-36 | 99.785 | 257.245730 |
| ()27-36 | 182-19-02 | 282-26-30 | 20.919 | 4.507 | -20.428 | -151,593.933 | -38,741.301 | ()27-35 | 64.920 | 292.594440 |
| ()27-35 | 179-05-35 | 281-32-05 | 22.705 | 4.540 | -22.246 | -151,589.393 | -38,763.547 | ()27-8 | 22.246 | 100.996840 |
| TOTAL | 1620-00-00 | | 209.980 | | | | | | 合計 | 5494.259659 |
| | | | | | | | | | 面積 | 2747.1298295 |

新 848 田

** 倍横距法面積計算 **

| 観測点 | 挟角 | 方向角 | 距離 | 緯距 | 経距 | X | Y | 測点 | 倍横距 | 倍面積 |
|---------|-----------|-----------|--------|--------|--------|--------------|-------------|---------|--------|------------|
| ()27-8 | 138-39-31 | 240-11-23 | 2.394 | -1.190 | -2.077 | -151,590.583 | -38,765.624 | W.27-11 | -2.077 | 2.471630 |
| W.27-11 | 137-41-53 | 197-53-16 | 2.715 | -2.584 | -0.834 | -151,593.167 | -38,766.458 | ()27-18 | -4.988 | 12.888992 |
| ()27-18 | 83-39-01 | 101-32-17 | 6.059 | -1.212 | 5.937 | -151,594.379 | -38,760.521 | ()27-17 | 0.115 | -0.139380 |
| ()27-17 | 89-59-51 | 11-32-08 | 4.280 | 4.194 | 0.856 | -151,590.185 | -38,759.665 | ()27-16 | 6.908 | 28.972152 |
| ()27-16 | 89-59-44 | 281-31-52 | 3.962 | 0.792 | -3.882 | -151,589.393 | -38,763.547 | ()27-8 | 3.882 | 3.074544 |
| TOTAL | 540-00-00 | | 19.410 | | | | | | 合計 | 47.267938 |
| | | | | | | | | | 面積 | 23.6339690 |

新 847. / 田

** 倍横距法面積計算 **

| 観測点 | 挟角 | 方向角 | 距離 | 緯距 | 経距 | X | Y | 測点 | 倍横距 | 倍面積 |
|----------|------------|-----------|---------|---------|---------|--------------|-------------|----------|---------|--------------|
| ()27-16 | 90-00-01 | 191-32-08 | 4.280 | -4.194 | -0.856 | -151,594.379 | -38,760.521 | ()27-17 | -0.856 | 3.590064 |
| ()27-17 | 270-00-09 | 281-32-17 | 6.059 | 1.212 | -5.937 | -151,593.167 | -38,766.458 | ()27-18 | -7.649 | -9.270588 |
| ()27-18 | 96-21-08 | 197-53-25 | 21.758 | -20.706 | -6.684 | -151,613.873 | -38,773.142 | ()27-12 | -20.270 | 419.710620 |
| ()27-12 | 82-30-01 | 100-23-26 | 49.158 | -8.866 | 48.352 | -151,622.739 | -38,724.790 | ()27-13 | 21.398 | -189.714668 |
| ()27-13 | 89-51-34 | 10-15-00 | 24.609 | 24.216 | 4.379 | -151,598.523 | -38,720.411 | ()27-14 | 74.129 | 1795.107864 |
| ()27-14 | 89-56-05 | 280-11-05 | 0.469 | 0.083 | -0.462 | -151,598.440 | -38,720.873 | ()27-36 | 78.046 | 6.477818 |
| ()27-36 | 182-15-25 | 282-26-30 | 20.919 | 4.507 | -20.428 | -151,593.933 | -38,741.301 | ()27-35 | 57.156 | 257.602092 |
| ()27-35 | 179-05-37 | 281-32-07 | 18.743 | 3.748 | -18.364 | -151,590.185 | -38,759.665 | ()27-16 | 18.364 | 68.828272 |
| TOTAL | 1080-00-00 | | 145.995 | | | | | | 合計 | 2352.331474 |
| | | | | | | | | | 面積 | 1176.1657370 |

新・842-A 田

** 倍横距法面積計算 **

| 観測点 | 挟角 | 方向角 | 距離 | 緯距 | 経距 | X | Y | 測点 | 倍横距 | 倍面積 |
|---------|-----------|-----------|--------|---------|---------|--------------|-------------|---------|--------|-------------|
| ()27-14 | 90-07-39 | 190-15-00 | 24.609 | -24.216 | -4.379 | -151,622.739 | -38,724.790 | ()27-13 | -4.379 | 106.041864 |
| ()27-13 | 90-08-22 | 100-23-22 | 17.140 | -3.091 | 16.859 | -151,625.830 | -38,707.931 | ()27-15 | 8.101 | -25.040191 |
| ()27-15 | 89-52-41 | 10-16-03 | 21.678 | 21.331 | 3.864 | -151,604.499 | -38,704.067 | ()27-2 | 28.824 | 614.844744 |
| ()27-2 | 135-29-43 | 325-45-46 | 4.211 | 3.481 | -2.369 | -151,601.018 | -38,706.436 | ()27-1 | 30.319 | 105.540439 |
| ()27-1 | 134-21-35 | 280-07-21 | 14.196 | 2.495 | -13.975 | -151,598.523 | -38,720.411 | ()27-14 | 13.975 | 34.867625 |
| TOTAL | 540-00-00 | | 81.834 | | | | | | 合計 | 836.254481 |
| | | | | | | | | | 面積 | 418.1272405 |

新・843 田

** 倍横距法面積計算 **

| 観測点 | 挟角 | 方向角 | 距離 | 緯距 | 経距 | X | Y | 測点 | 倍横距 | 倍面積 |
|----------|-----------|-----------|---------|---------|---------|--------------|-------------|----------|---------|--------------|
| ()27-12 | 97-29-54 | 197-53-19 | 11.473 | -10.918 | -3.524 | -151,624.791 | -38,776.666 | W.27-10 | -3.524 | 38.475032 |
| W.27-10 | 173-00-09 | 190-53-28 | 3.969 | -3.898 | -0.750 | -151,628.689 | -38,777.416 | W.27-9 | -7.798 | 30.396604 |
| W.27-9 | 130-27-37 | 141-21-05 | 2.403 | -1.877 | 1.501 | -151,630.566 | -38,775.915 | ()27-5 | -7.047 | 13.227219 |
| ()27-5 | 138-56-21 | 100-17-26 | 63.037 | -11.261 | 62.023 | -151,641.827 | -38,713.892 | ()27-4 | 56.477 | -635.987497 |
| ()27-4 | 135-00-18 | 55-17-44 | 4.261 | 2.426 | 3.503 | -151,639.401 | -38,710.389 | ()27-3 | 122.003 | 295.979278 |
| ()27-3 | 134-58-14 | 10-15-58 | 13.792 | 13.571 | 2.458 | -151,625.830 | -38,707.931 | ()27-15 | 127.964 | 1736.599444 |
| ()27-15 | 90-07-27 | 280-23-25 | 66.298 | 11.957 | -65.211 | -151,613.873 | -38,773.142 | ()27-12 | 65.211 | 779.727927 |
| TOTAL | 900-00-00 | | 165.233 | | | | | | 合計 | 2258.418007 |
| | | | | | | | | | 面積 | 1129.2090035 |

水路 第5-2号

** 倍横距法面積計算 **

| 観測点 | 挟角 | 方向角 | 距離 | 緯距 | 経距 | X | Y | 測点 | 倍横距 | 倍面積 |
|----------|-----------|-----------|--------|---------|---------|--------------|-------------|----------|---------|-------------|
| ()27-7 | 137-48-06 | 198-01-01 | 34.323 | -32.640 | -10.616 | -151,624.283 | -38,778.092 | ()27-33 | -10.616 | 346.506240 |
| (D)27-33 | 173-47-16 | 191-48-17 | 2.884 | -2.823 | -0.590 | -151,627.106 | -38,778.682 | ()27-6 | -21.822 | 61.603506 |
| ()27-6 | 129-32-39 | 141-20-56 | 2.027 | -1.583 | 1.266 | -151,628.689 | -38,777.416 | W.27-9 | -21.146 | 33.474118 |
| W.27-9 | 49-32-32 | 10-53-28 | 3.969 | 3.898 | 0.750 | -151,624.791 | -38,776.666 | W.27-10 | -19.130 | -74.568740 |
| W.27-10 | 186-59-54 | 17-53-22 | 35.946 | 34.208 | 11.042 | -151,590.583 | -38,765.624 | W.27-11 | -7.338 | -251.018304 |
| W.27-11 | 42-19-33 | 240-12-55 | 2.134 | -1.060 | -1.852 | -151,591.643 | -38,767.476 | ()27-7 | 1.852 | -1.963120 |
| TOTAL | 720-00-00 | | 81.283 | | | | | | 合計 | 114.033700 |
| | | | | | | | | | 面積 | 57.0168500 |