

画地略図

工区

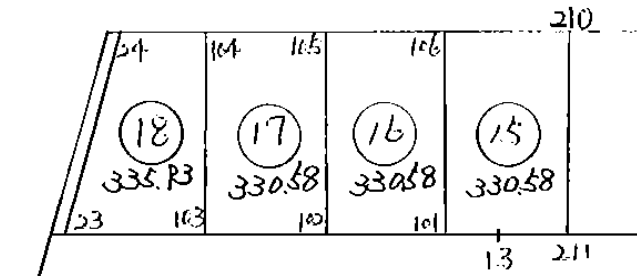
ブロック

記入者

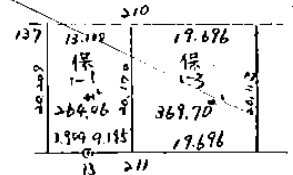
点検者



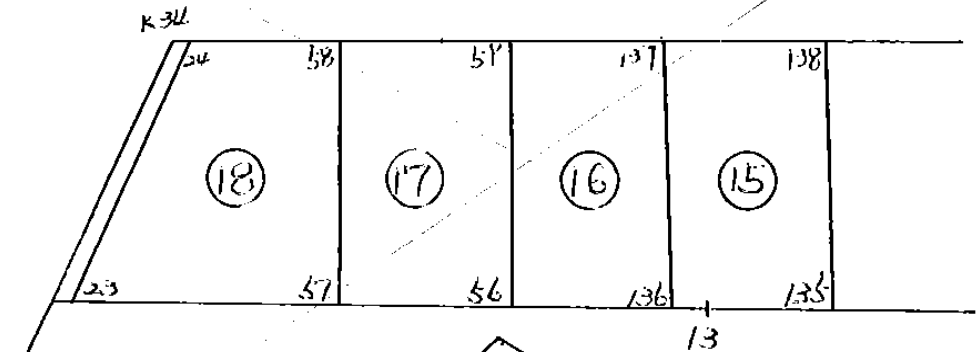
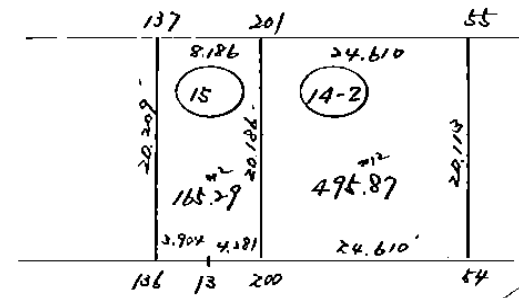
s.61.8.26 変更



s.61.5.29 変更

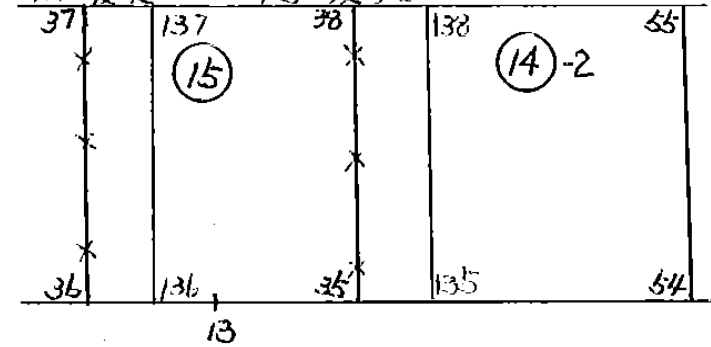


s.61.5.12 変更



4/19 変更

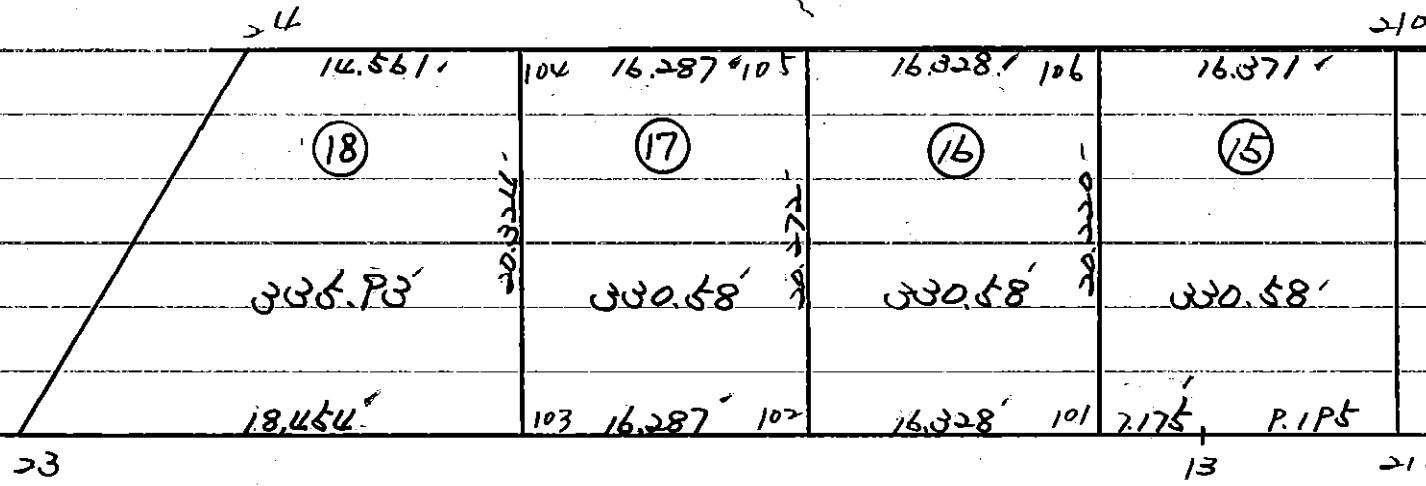
4/5 変更



ドウロ

1 BLOCK

561.8.26 変更計算



MM

70

シウウイ ヒョウ

1-7*カワ BLOCK

1327.686386

15 LOT

330.584055

16 LOT

330.583064

17 LOT

330.581817

18 LOT

~~335.726804~~

335.93

ゴウウイ

1327.675437

0.000000

1-7"ブロック BLOCK

元NO. X ₀ 、Y ₀ ＝	X	Y	(X-X ₀)(Y _{N-1} -Y ₀)	(X _{N-1} -X ₀)(Y-Y ₀)
	-153700.000	-32100.000		
211	-153766.992	-32163.445		
13	-153771.342	-32171.546	4526.293190	4793.009632
23	-153798.914	-32222.850	7076.901044	8764.364700
24	-153779.125	-32229.061	9720.506250	12765.939754
210	-153749.223	-32172.989	6352.769603	5775.254625
211	-153766.992	-32163.445	4889.679088	3122.953235
			32366.149175	39221.521946
			平均傾斜率＝	2655.372771
			変位率＝	1327.686386

15 LOT

元NO. X ₀ 、Y ₀ ＝	X	Y	(X-X ₀)(Y _{N-1} -Y ₀)	(X _{N-1} -X ₀)(Y-Y ₀)
	-153700.000	-32100.000		
211	-153766.992	-32163.445		
13	-153771.342	-32171.546	4526.293190	4793.009632
101	-153774.739	-32177.866	5347.276494	5355.116172
106	-153756.926	-32187.434	4432.599916	6534.729726
210	-153749.223	-32172.989	4303.763782	4154.971814
211	-153766.992	-32163.445	4889.679088	3122.953235
			23499.612470	24160.780579
			平均傾斜率＝	661.168109
			変位率＝	330.584055

16 LOT

元NO. X ₀ 、Y ₀ ＝	X	Y	(X-X ₀)(Y _{N-1} -Y ₀)	(X _{N-1} -X ₀)(Y-Y ₀)
	-153700.000	-32100.000		
101	-153774.739	-32177.866		
102	-153782.468	-32192.249	6421.453288	6894.598011
105	-153764.610	-32201.842	5960.207890	8398.706056
106	-153756.926	-32187.434	5797.457692	5649.110740
101	-153774.739	-32177.866	6534.729726	4432.599916
			24713.848596	25375.014723
			平均傾斜率＝	661.166127
			変位率＝	330.583064

17 LOT

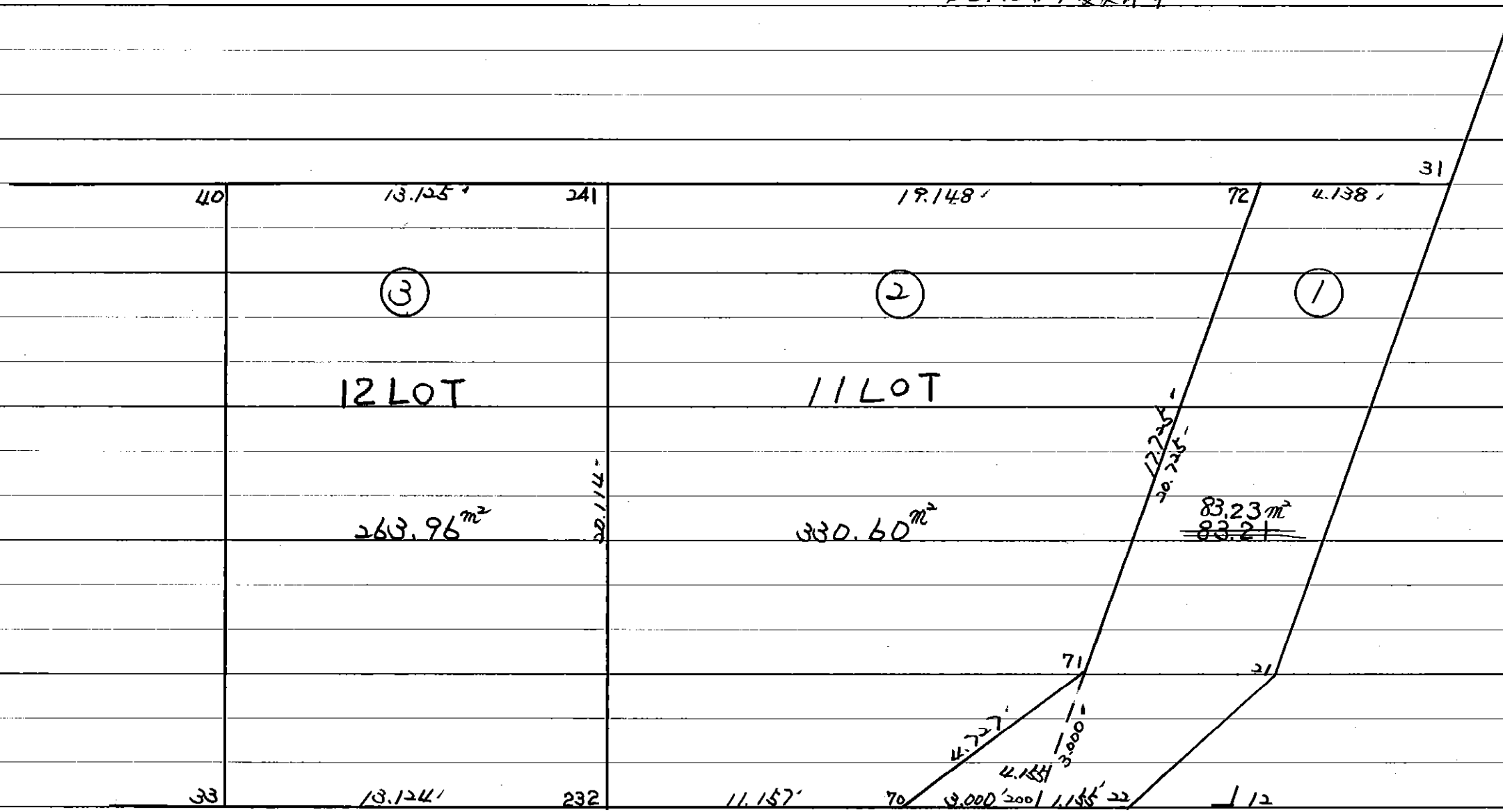
7/NO. X ₀ , Y ₀ =	X	Y	(X-X ₀) (YN-1-Y ₀)	(XN-1-X ₀) (Y-Y ₀)
	-153700.000	-32100.000		
102	-153782.468	-32192.249		
103	-153790.178	-32206.595	8318.830322	8790.676460
104	-153772.274	-32216.213	7704.047030	10479.855914
105	-153764.610	-32201.842	7508.521930	7360.528708
102	-153782.468	-32192.249	8398.706056	5960.207890
			31930.105338	32591.268972
			1/2 平均値 =	661.163634
			1/2 標準偏差 =	330.581817

18 LOT

7/NO. X ₀ , Y ₀ =	X	Y	(X-X ₀) (YN-1-Y ₀)	(XN-1-X ₀) (Y-Y ₀)
	-153700.000	-32200.000		
103	-153790.178	-32206.595		
23	-153798.914	-32222.850	652.337830	2060.567300
24	-153779.125	-32229.061	1808.006250	2874.539754
104	-153772.274	-32216.213	2100.354714	1282.853625
103	-153790.178	-32206.595	1462.055914	476.647030
			6022.754708	6694.607709
			1/2 平均値 =	671.853001
			1/2 標準偏差 =	335.926501

1 BLOCK 11, 12 LOT 分筆

S 61.6.19 變更計算



Handwritten signature or mark.

*** メンセキ ケイザン ***

1 LOT	31 -	21 -	22 -	70 -	71 -	72 -
2 LOT	70 -	232 -	241 -	72 -	71 -	
3 LOT	232 -	33 -	40 -	241 -		

*** メンセキ ケイサン ***

シウケイ ヒョウ

1-11.12 BLOCK

677.785692

1 LOT

~~83.211762~~ 83.23

2 LOT

330.608113

3 LOT

263.968506

ゴウケイ

677.788381

0.000000

1-11,12 BLOCK

棟NO. X ₀ , Y ₀ =	X	Y	(X-X ₀)(Y _{N-1} -Y ₀)	(X _{N-1} -X ₀)(Y-Y ₀)
	-153700.000	-32000.000		
31	-153707.169	-32094.570		
21	-153724.337	-32090.194	2301.550090	646.600786
22	-153728.663	-32092.075	2585.230622	2240.829275
33	-153742.117	-32117.127	3877.922775	3357.211201
40	-153724.400	-32126.646	2857.898800	5333.949582
31	-153707.169	-32094.570	907.925174	2307.508000
			12530.527461	13886.098844
			ハイムセキ=	1355.571383
			ムセキ=	677.785692

1 LOT

棟NO. X ₀ , Y ₀ =	X	Y	(X-X ₀)(Y _{N-1} -Y ₀)	(X _{N-1} -X ₀)(Y-Y ₀)
	-153700.000	-32000.000		
31	-153707.169	-32094.570		
21	-153724.337	-32090.194	2301.550090	646.600786
22	-153728.663	-32092.075	2585.230622	2240.829275
70	-153730.629	-32095.736	2820.165175	2744.080968
71	-153726.302	-32093.834	2518.048272	2874.041586
72	-153709.127	-32098.215	856.422918	2583.250930
31	-153707.169	-32094.570	704.103335	863.140390
			11785.520412	11951.943935
			ハイムセキ=	166.423523
			ムセキ=	83.211762
				83.23

2 LOT

棟NO. X ₀ , Y ₀ =	X	Y	(X-X ₀)(Y _{N-1} -Y ₀)	(X _{N-1} -X ₀)(Y-Y ₀)
	-153700.000	-32000.000		
70	-153730.629	-32095.736		
232	-153735.908	-32105.565	3437.688288	3233.350385
241	-153718.189	-32115.084	1920.121785	4132.436272
72	-153709.127	-32098.215	1050.371668	1786.432635
71	-153726.302	-32093.834	2583.250930	856.422918
70	-153730.629	-32095.736	2874.041586	2518.048272
			11865.474257	12526.690482
			ハイムセキ=	661.216225
			ムセキ=	330.608113

3 LOT

チノNO. X ₀ , Y ₀ =	X	Y	(X-X ₀)(Y _{N-1} -Y ₀)	(X _{N-1} -X ₀)(Y-Y ₀)
	-153700.000	-32100.000		
232	-153735.908	-32105.565		
33	-153742.117	-32117.127	234.381105	614.996316
40	-153724.400	-32126.646	417.898800	1122.249582
241	-153718.189	-32115.084	484.664094	368.049600
232	-153735.908	-32105.565	541.636272	101.221785
			1678.580271	2206.517283
			メッセージ=	527.937012
			メッセージ=	263.968506

***** カクヒツメンヒキ ケイサン *****

1 BLOCK

テツメイ	X	Y	(X-X0)*(YN-1-Y0)	(XN-1-X0)*(Y-Y0)
X0.Y0	- 153400.000	- 32000.000		
1-1	- 153428.436	- 32071.491		
1-15	- 153455.013	- 32064.750	+ 3932.934383	+ 1841.231000
1-16	- 153459.332	- 32066.669	+ 3841.747000	+ 3667.661697
1-3	- 153502.394	- 32146.809	+ 6826.505586	+ 8710.471588
1-4	- 153541.043	- 32136.959	+ 20706.381787	+ 14023.779846
1-5	- 153574.761	- 32128.324	+ 23935.091799	+ 18099.201932
1-6	- 153606.217	- 32120.313	+ 26462.590308	+ 21026.020193
1-17	- 153666.441	- 32104.952	+ 32056.316033	+ 21642.886584
1-18	- 153670.765	- 32106.863	+ 28417.328280	+ 28472.684583
1-8	- 153690.363	- 32143.327	+ 31029.061269	+ 38807.935155
1-9	- 153695.651	- 32140.485	+ 42374.770877	+ 40791.646055
1-10	- 153684.319	- 32119.411	+ 39942.554715	+ 35303.981561
1-19	- 153676.746	- 32105.317	+ 33046.516606	+ 29943.624123
1-20	- 153678.229	- 32101.947	+ 29302.243593	+ 28213.424462
1-21	- 153724.337	- 32090.194	+ 33065.184139	+ 25094.586426
1-22	- 153728.663	- 32092.075	+ 29643.430622	+ 29863.329275
1-13	- 153771.342	- 32171.546	+ 34191.314650	+ 56380.822998
1-14	- 153799.371	- 32223.700	+ 68510.497566	+ 83069.205400
K34	- 153779.503	- 32229.770	+ 84894.821100	+ 91763.474670
K35	- 153739.391	- 32154.553	+ 77981.870070	+ 58653.327159
K36	- 153709.904	- 32170.739	+ 47896.592912	+ 57947.279949
K37	- 153746.448	- 32239.806	+ 59152.185072	+ 74316.838624
K38	- 153714.863	- 32249.649	+ 75506.036578	+ 86490.396752
K39	- 153655.760	- 32136.983	+ 63850.228240	+ 43130.878329
K40	- 153639.622	- 32141.554	+ 32824.140426	+ 36203.851040
K41	- 153683.426	- 32225.122	+ 40120.084004	+ 53944.183884
K42	- 153698.029	- 32254.799	+ 67092.884538	+ 72216.661374
K1	- 153550.845	- 32300.400	+ 38435.155155	+ 89527.911600
1-1	- 153428.436	- 32071.491	+ 8542.174400	+ 10784.059895
			+083580.641707	+159931.356153
		ハイメンヒキ	= 76350.714446	
		メンヒキ	= 38175.357223	

タテ

テツメイ	X	Y	(X-X0)*(YN-1-Y0)	(XN-1-X0)*(Y-Y0)
X0.Y0	- 153400.000	- 32000.000		
1-1	- 153428.436	- 32071.491		
1-15	- 153455.013	- 32064.750	+ 3932.934383	+ 1841.231000
1-16	- 153459.332	- 32066.669	+ 3841.747000	+ 3667.661697
1-3	- 153502.394	- 32146.809	+ 6826.505586	+ 8710.471588
1-4	- 153541.043	- 32136.959	+ 20706.381787	+ 14023.779846
1-5	- 153574.761	- 32128.324	+ 23935.091799	+ 18099.201932
1-6	- 153606.217	- 32120.313	+ 26462.590308	+ 21026.020193

***** カクヒツ メンセキ ケイザン *****

テコメイ	X	Y	(X-X0)*(YN-1-Y0)	(XN-1-X0)*(Y-Y0)
1-17	- 153666.441	- 32104.952	+ 32056.316033	+ 21642.886584
1-18	- 153670.765	- 32106.863	+ 28417.328280	+ 28472.684583
1-8	- 153690.363	- 32143.327	+ 31029.061269	+ 38807.935155
1-9	- 153695.651	- 32140.485	+ 42374.770877	+ 40791.646055
1-10	- 153684.319	- 32119.411	+ 39942.554715	+ 35303.981561
1-19	- 153676.746	- 32105.317	+ 33046.516606	+ 29943.624123
1-20	- 153678.229	- 32101.947	+ 29302.243593	+ 28213.424462
1-21	- 153724.337	- 32090.194	+ 33065.184139	+ 25094.586426
1-22	- 153728.663	- 32092.075	+ 29643.430622	+ 29863.329275
1-13	- 153771.342	- 32171.546	+ 34191.314650	+ 56380.822998
1-23	- 153798.914	- 32222.850	+ 68432.101044	+ 82753.564700
1-24	- 153779.125	- 32229.061	+ 84488.006250	+ 91375.639754
K35	- 153739.391	- 32154.553	+ 77741.241851	+ 58594.906125
K36	- 153709.904	- 32170.739	+ 47896.592912	+ 57947.279949
K37	- 153746.448	- 32239.806	+ 59152.185072	+ 74316.838624
K38	- 153714.863	- 32249.649	+ 75506.036578	+ 86490.396752
K39	- 153655.760	- 32136.983	+ 63850.228240	+ 43130.878329
K40	- 153639.622	- 32141.554	+ 32824.140426	+ 36203.851040
K41	- 153683.426	- 32225.122	+ 40120.084004	+ 53944.183884
K42	- 153698.029	- 32254.799	+ 67092.884538	+ 72216.661374
K1	- 153550.845	- 32300.400	+ 38435.155155	+ 89527.911600
1-1	- 153428.436	- 32071.491	+ 8542.174400	+ 10784.059895

+082854.802116 +159169.459503

ハイメンセキ = 76314.657387
 メンセキ = 38157.328693

トウロ

テコメイ	X	Y	(X-X0)*(YN-1-Y0)	(XN-1-X0)*(Y-Y0)
X0.Y0	- 153700.000	- 32200.000		
1-23	- 153798.914	- 32222.850		
1-14	- 153799.371	- 32223.700	+ 2270.627350	+ 2344.261800
K34	- 153779.503	- 32229.770	+ 1884.221100	+ 2958.274670
1-24	- 153779.125	- 32229.061	+ 2355.551250	+ 2310.436683
1-23	- 153798.914	- 32222.850	+ 2874.539754	+ 1808.006250

+ 9384.939454 + 9420.979403

ハイメンセキ = 36.039949
 メンセキ = 18.019974

2 入ミナリ

テコメイ	X	Y	(X-X0)*(YN-1-Y0)	(XN-1-X0)*(Y-Y0)
X0.Y0	- 153400.000	- 32000.000		
1-2	- 153457.906	- 32064.016		
1-15	- 153455.013	- 32064.750	+ 3521.712208	+ 3749.413500
1-16	- 153459.332	- 32066.669	+ 3841.747000	+ 3667.661697

***** カクヒツ メンセキ ケイサツ *****

テウメイ	X	Y	(X-X0)*(YN-1-Y0)	(XN-1-X0)*(Y-Y0)
1-2	- 153457.906	- 32064.016	+ 3860.535114	+ 3798.197312
			+ 11223.994322	+ 11215.272509
		ハイ	= 8.721813	
		メンセキ	= 4.360906	

7 入ミキリ

テウメイ	X	Y	(X-X0)*(YN-1-Y0)	(XN-1-X0)*(Y-Y0)
X0.Y0	- 153600.000	- 32100.000		
1-7	- 153669.340	- 32104.213		
1-17	- 153666.441	- 32104.952	+ 279.915933	+ 343.371680
1-18	- 153670.765	- 32106.863	+ 350.428280	+ 455.984583
1-7	- 153669.340	- 32104.213	+ 475.880420	+ 298.132945
			+ 1106.224633	+ 1097.489208
		ハイ	= 8.735425	
		メンセキ	= 4.367712	

11 入ミキリ

テウメイ	X	Y	(X-X0)*(YN-1-Y0)	(XN-1-X0)*(Y-Y0)
X0.Y0	- 153600.000	- 32100.000		
1-11	- 153675.332	- 32102.686		
1-19	- 153676.746	- 32105.317	+ 206.139756	+ 400.540244
1-20	- 153678.229	- 32101.947	+ 415.943593	+ 149.424462
1-11	- 153675.332	- 32102.686	+ 146.671404	+ 210.123094
			+ 768.754753	+ 760.087800
		ハイ	= 8.666953	
		メンセキ	= 4.333476	

12 入ミキリ

テウメイ	X	Y	(X-X0)*(YN-1-Y0)	(XN-1-X0)*(Y-Y0)
X0.Y0	- 153700.000	- 32000.000		
1-12	- 153727.254	- 32089.451		
1-21	- 153724.337	- 32090.194	+ 2176.968987	+ 2458.147276
1-22	- 153728.663	- 32092.075	+ 2585.230622	+ 2240.829275
1-12	- 153727.254	- 32089.451	+ 2509.412050	+ 2563.934013
			+ 7271.611659	+ 7262.910564
		ハイ	= 8.701095	
		メンセキ	= 4.350547	

***** カクヒツ メンセキ ケイサン *****

1 BLOCK

テウメイ	X	Y	(X-X0)*(YN-1-Y0)	(XN-1-X0)*(Y-Y0)
X0.Y0	- 153400.000	- 32000.000		
1-1	- 153428.436	- 32071.491		
1-15	- 153455.013	- 32064.750	+ 3932.934383	+ 1841.231000
1-16	- 153459.332	- 32066.669	+ 3841.747000	+ 3667.661697
1-3	- 153502.394	- 32146.809	+ 6826.505586	+ 8710.471588
1-4	- 153541.043	- 32136.959	+ 20706.381787	+ 14023.779846
1-5	- 153574.761	- 32128.324	+ 23935.091799	+ 18099.201932
1-6	- 153606.217	- 32120.313	+ 26462.590308	+ 21026.020193
1-17	- 153666.441	- 32104.952	+ 32056.316033	+ 21642.886584
1-18	- 153670.765	- 32106.863	+ 28417.328280	+ 28472.684583
1-8	- 153690.363	- 32143.327	+ 31029.061269	+ 38807.935155
1-9	- 153695.651	- 32140.485	+ 42374.770877	+ 40791.646055
1-10	- 153684.319	- 32119.411	+ 39942.554715	+ 35303.981561
1-19	- 153676.746	- 32105.317	+ 33046.516606	+ 29943.624123
1-20	- 153678.229	- 32101.947	+ 29302.243593	+ 28213.424462
1-21	- 153724.337	- 32090.194	+ 33065.184139	+ 25094.586426
1-22	- 153728.663	- 32092.075	+ 29643.430622	+ 29863.329275
1-13	- 153771.342	- 32171.546	+ 34191.314650	+ 56380.822998
1-14	- 153799.371	- 32223.700	+ 68510.497566	+ 83069.205400
K34	- 153779.503	- 32229.770	+ 84894.821100	+ 91763.474670
K35	- 153739.391	- 32154.553	+ 77981.870070	+ 58653.327159
K36	- 153709.904	- 32170.739	+ 47896.592912	+ 57947.279949
K37	- 153746.448	- 32239.806	+ 59152.185072	+ 74316.838624
K38	- 153714.863	- 32249.649	+ 75506.036578	+ 86490.396752
K39	- 153655.760	- 32136.983	+ 63850.228240	+ 43130.878329
K40	- 153639.622	- 32141.554	+ 32824.140426	+ 36203.851040
K41	- 153683.426	- 32225.122	+ 40120.084004	+ 53944.183884
K42	- 153698.029	- 32254.799	+ 67092.884538	+ 72216.661374
K1	- 153550.845	- 32300.400	+ 38435.155155	+ 89527.911600
1-1	- 153428.436	- 32071.491	+ 8542.174400	+ 10784.059895

+083580.641707 +159931.356153

ハイメンセキ = 76350.714446
メンセキ = 38175.357223

1 LOT

テウメイ	X	Y	(X-X0)*(YN-1-Y0)	(XN-1-X0)*(Y-Y0)
X0.Y0	- 153400.000	- 32000.000		
1-1	- 153428.436	- 32071.491		
1-15	- 153455.013	- 32064.750	+ 3932.934383	+ 1841.231000
1-16	- 153459.332	- 32066.669	+ 3841.747000	+ 3667.661697
1-3	- 153502.394	- 32146.809	+ 6826.505586	+ 8710.471588
1-53	- 153472.728	- 32154.319	+ 10677.124952	+ 15801.339686
1-1	- 153428.436	- 32071.491	+ 4388.215084	+ 5199.397448

+ 29666.527005 + 35220.101419

ハイメンセキ = 5553.574414
メンセキ = 2776.787207

***** カクヒツ メンセキ ケイサン *****

2 LOT

テコメイ	X	Y	(X-X0)*(YN-1-Y0)	(XN-1-X0)*(Y-Y0)
X0.Y0	- 153400.000	- 32100.000		
1-53	- 153472.728	- 32154.319		
1-3	- 153502.394	- 32146.809	+ 5561.939686	+ 3404.324952
1-4	- 153541.043	- 32136.959	+ 6602.081787	+ 3784.379846
1-5	- 153574.761	- 32128.324	+ 6458.991799	+ 3994.901932
1-6	- 153606.217	- 32120.313	+ 5840.890308	+ 3549.920193
1-25	- 153617.615	- 32117.406	+ 4420.413495	+ 3589.413102
1-51	- 153655.330	- 32187.653	+ 4444.273980	+ 19074.607595
1-52	- 153510.294	- 32224.568	+ 9667.599982	+ 31805.947440
1-53	- 153472.728	- 32154.319	+ 9059.581504	+ 5991.059786
			+ 52055.772541	+ 75194.554846
	ハイ	メンセキ	= 23138.782305	
	メンセキ	= 11569.391152		

3 LOT

テコメイ	X	Y	(X-X0)*(YN-1-Y0)	(XN-1-X0)*(Y-Y0)
X0.Y0	- 153500.000	- 32100.000		
1-52	- 153510.294	- 32224.568		
1-50	- 153662.790	- 32185.754	+ 20278.424720	+ 882.751676
K41	- 153683.426	- 32225.122	+ 15729.513204	+ 20368.610380
K42	- 153698.029	- 32254.799	+ 24777.784538	+ 28394.161374
K1	- 153550.845	- 32300.400	+ 7870.755155	+ 39685.011600
1-52	- 153510.294	- 32224.568	+ 2062.917600	+ 6333.659960
			+ 70719.395217	+ 95664.194990
	ハイ	メンセキ	= 24944.799773	
	メンセキ	= 12472.399886		

4 LOT

テコメイ	X	Y	(X-X0)*(YN-1-Y0)	(XN-1-X0)*(Y-Y0)
X0.Y0	- 153600.000	- 32100.000		
1-25	- 153617.615	- 32117.406		
1-26	- 153625.862	- 32115.303	+ 450.153972	+ 269.562345
1-50	- 153662.790	- 32185.754	+ 960.875370	+ 2217.769948
1-51	- 153655.330	- 32187.653	+ 4744.768820	+ 5503.731870
1-25	- 153617.615	- 32117.406	+ 1544.007595	+ 963.073980
			+ 7699.805757	+ 8954.138143
	ハイ	メンセキ	= 1254.332386	
	メンセキ	= 627.166193		

5 LOT

テコメイ	X	Y	(X-X0)*(YN-1-Y0)	(XN-1-X0)*(Y-Y0)
X0.Y0	- 153600.000	- 32100.000		
1-26	- 153625.862	- 32115.303		
1-27	- 153634.134	- 32113.193	+ 522.352602	+ 341.197366

***** カクヒツ メンセキ ケイリョウ *****

テコメイ	X	Y	(X-X0)*(YN-1-Y0)	(XN-1-X0)*(Y-Y0)
1-49	- 153648.076	- 32139.159	+ 634.266668	+ 1336.653306
K40	- 153639.622	- 32141.554	+ 1551.557898	+ 1997.750104
1-26	- 153625.862	- 32115.303	+ 1074.669548	+ 606.335466
			+ 3782.846716	+ 4281.936242
		ハイ	= 499.089526	
		メンセキ	= 249.544763	

6 LOT

テコメイ	X	Y	(X-X0)*(YN-1-Y0)	(XN-1-X0)*(Y-Y0)
X0.Y0	- 153600.000	- 32100.000		
1-27	- 153634.134	- 32113.193		
1-17	- 153666.441	- 32104.952	+ 876.556113	+ 169.031568
1-18	- 153670.765	- 32106.863	+ 350.428280	+ 455.984583
1-28	- 153687.522	- 32138.042	+ 600.663486	+ 2692.042130
1-48	- 153686.707	- 32140.751	+ 3298.507694	+ 3566.609022
1-47	- 153665.871	- 32151.951	+ 2684.309121	+ 4504.515357
1-46	- 153663.180	- 32151.127	+ 3282.264180	+ 3367.786617
K39	- 153655.760	- 32136.983	+ 2850.841520	+ 2336.585940
1-49	- 153648.076	- 32139.159	+ 1777.994708	+ 2183.505840
1-27	- 153634.134	- 32113.193	+ 1336.653306	+ 634.266668
			+ 17058.218408	+ 19910.327725
		ハイ	= 2852.109317	
		メンセキ	= 1426.054658	

7 LOT

テコメイ	X	Y	(X-X0)*(YN-1-Y0)	(XN-1-X0)*(Y-Y0)
X0.Y0	- 153600.000	- 32100.000		
1-46	- 153663.180	- 32151.127		
1-47	- 153665.871	- 32151.951	+ 3367.786617	+ 3282.264180
1-48	- 153686.707	- 32140.751	+ 4504.515357	+ 2684.309121
1-28	- 153687.522	- 32138.042	+ 3566.609022	+ 3298.507694
1-8	- 153690.363	- 32143.327	+ 3437.589246	+ 3792.065694
1-44	- 153665.967	- 32156.440	+ 2858.152209	+ 5100.087720
1-46	- 153663.180	- 32151.127	+ 3565.879200	+ 3372.694809
			+ 21300.531651	+ 21529.929218
		ハイ	= 229.397567	
		メンセキ	= 114.698783	

8 LOT

テコメイ	X	Y	(X-X0)*(YN-1-Y0)	(XN-1-X0)*(Y-Y0)
X0.Y0	- 153600.000	- 32100.000		
1-44	- 153665.967	- 32156.440		
1-8	- 153690.363	- 32143.327	+ 5100.087720	+ 2858.152209

***** カクヒツ メンセキ ケイリョウ *****

テコメイ	X	Y	(X-X0)*(YN-1-Y0)	(XN-1-X0)*(Y-Y0)
1-30	- 153694.109	- 32141.314	+ 4077.460643	+ 3733.256982
1-42	- 153702.433	- 32156.820	+ 4231.916962	+ 5347.273380
1-43	- 153674.140	- 32172.020	+ 4212.634800	+ 7377.224660
1-44	- 153665.967	- 32156.440	+ 4750.943340	+ 4184.461600
			+ 22373.043465	+ 23500.368831
		ハイメンセキ	= 1127.325366	
		メンセキ	= 563.662683	

9 LOT

テコメイ	X	Y	(X-X0)*(YN-1-Y0)	(XN-1-X0)*(Y-Y0)
X0.Y0	- 153600.000	- 32100.000		
1-43	- 153674.140	- 32172.020		
1-42	- 153702.433	- 32156.820	+ 7377.224660	+ 4212.634800
K36	- 153709.904	- 32170.739	+ 6244.745280	+ 7246.007987
K37	- 153746.448	- 32239.806	+ 10359.585072	+ 15365.238624
K38	- 153714.863	- 32249.649	+ 16058.536578	+ 21915.796752
1-43	- 153674.140	- 32172.020	+ 11094.976860	+ 8272.433260
			+ 51135.068450	+ 57012.111423
		ハイメンセキ	= 5877.042973	
		メンセキ	= 2938.521486	

10 LOT

テコメイ	X	Y	(X-X0)*(YN-1-Y0)	(XN-1-X0)*(Y-Y0)
X0.Y0	- 153600.000	- 32000.000		
K36	- 153709.904	- 32170.739		
1-30	- 153694.109	- 32141.314	+ 16068.076551	+ 15530.973856
1-9	- 153695.651	- 32140.485	+ 13516.825414	+ 13220.902865
1-10	- 153684.319	- 32119.411	+ 11845.554715	+ 11421.781561
1-19	- 153676.746	- 32105.317	+ 9164.316606	+ 8880.224123
1-20	- 153678.229	- 32101.947	+ 8238.843593	+ 7824.024462
1-31	- 153707.169	- 32094.570	+ 10925.558043	+ 7398.116530
K35	- 153739.391	- 32154.553	+ 13182.206870	+ 16563.290457
K36	- 153709.904	- 32170.739	+ 16985.992912	+ 23799.479949
			+ 99927.374704	+104638.793803
		ハイメンセキ	= 4711.419099	
		メンセキ	= 2355.709549	

11 LOT

テコメイ	X	Y	(X-X0)*(YN-1-Y0)	(XN-1-X0)*(Y-Y0)
X0.Y0	- 153700.000	- 32000.000		
1-31	- 153707.169	- 32094.570		
1-21	- 153724.337	- 32090.194	+ 2301.550090	+ 646.600786

***** カクヒツ メンセキ ケイリソ *****

テコメイ	X	Y	(X-X0)*(YN-1-Y0)	(XN-1-X0)*(Y-Y0)
1-22	- 153728.663	- 32092.075	+ 2585.230622	+ 2240.829275
1-32	- 153733.950	- 32101.919	+ 3125.946250	+ 2921.304297
1-41	- 153716.231	- 32111.440	+ 1654.247289	+ 3783.388000
1-31	- 153707.169	- 32094.570	+ 798.913360	+ 1534.965670
			+ 10465.887611	+ 11127.088028
		ハイメンセキ	= 661.200417	
		メンセキ	= 330.600208	

12 LOT

テコメイ	X	Y	(X-X0)*(YN-1-Y0)	(XN-1-X0)*(Y-Y0)
X0.Y0	- 153700.000	- 32100.000		
1-32	- 153733.950	- 32101.919		
1-33	- 153742.117	- 32117.127	+ 80.822523	+ 581.461650
1-40	- 153724.400	- 32126.646	+ 417.898800	+ 1122.249582
1-41	- 153716.231	- 32111.440	+ 432.491226	+ 279.136000
1-32	- 153733.950	- 32101.919	+ 388.388000	+ 31.147289
			+ 1319.600549	+ 2013.994521
		ハイメンセキ	= 694.393972	
		メンセキ	= 347.196986	

13 LOT

テコメイ	X	Y	(X-X0)*(YN-1-Y0)	(XN-1-X0)*(Y-Y0)
X0.Y0	- 153700.000	- 32100.000		
1-33	- 153742.117	- 32117.127		
1-34	- 153749.894	- 32131.609	+ 854.534538	+ 1331.276253
1-39	- 153732.179	- 32141.127	+ 1017.146011	+ 2051.990538
1-40	- 153724.400	- 32126.646	+ 1003.498800	+ 857.441634
1-33	- 153742.117	- 32117.127	+ 1122.249582	+ 417.898800
			+ 3997.428931	+ 4658.607225
		ハイメンセキ	= 661.178294	
		メンセキ	= 330.589147	

14 LOT 分筆

テコメイ	X	Y	(X-X0)*(YN-1-Y0)	(XN-1-X0)*(Y-Y0)
X0.Y0	- 153700.000	- 32100.000		
1-34	- 153749.894	- 32131.609		
1-35	- 153767.184	- 32163.654	+ 2121.090336	+ 3175.952676
1-38	- 153749.334	- 32173.198	+ 3140.306436	+ 4911.878592
K35	- 153739.391	- 32154.553	+ 2883.342418	+ 2691.317702
1-39	- 153732.179	- 32141.127	+ 1755.460987	+ 1620.033657
1-34	- 153749.894	- 32131.609	+ 2051.990538	+ 1017.146011
			+ 11952.190715	+ 13416.328638
		ハイメンセキ	= 1464.137923	
		メンセキ	= 732.068961	

15 LOT

変更

テコメイ	X	Y	(X-X0)*(YN-1-Y0)	(XN-1-X0)*(Y-Y0)
X0.Y0	- 153700.000	- 32100.000		
1-35	- 153767.104	- 32163.654		
1-13	- 153771.342	- 32171.546	+ 4541.203668	+ 4801.022784
1-36	- 153774.852	- 32178.078	+ 5355.361192	+ 5570.240676
1-37	- 153757.038	- 32187.644	+ 4453.412964	+ 6560.328688
1-38	- 153749.334	- 32173.198	+ 4323.829096	+ 4175.067524
1-35	- 153767.104	- 32163.654	+ 4911.878592	+ 3140.306436
			+ 23585.685512	+ 24246.966108
	ハイ	メンセキ	= 661.280596	
	メンセキ		= 330.640298	

16 LOT

テコメイ	X	Y	(X-X0)*(YN-1-Y0)	(XN-1-X0)*(Y-Y0)
X0.Y0	- 153700.000	- 32100.000		
1-36	- 153774.852	- 32178.078		
1-23	- 153798.914	- 32222.850	+ 7723.007292	+ 9195.568200
1-24	- 153779.125	- 32229.061	+ 9720.506250	+ 12765.939754
1-37	- 153757.038	- 32187.644	+ 7361.381318	+ 6934.831500
1-36	- 153774.852	- 32178.078	+ 6560.328688	+ 4453.412964
			+ 31365.223548	+ 33349.752418
	ハイ	メンセキ	= 1984.528870	
	メンセキ		= 992.264435	

17 LOT

テコメイ	X	Y	(X-X0)*(YN-1-Y0)	(XN-1-X0)*(Y-Y0)
X0.Y0	- 153700.000	- 32200.000		
1-23	- 153798.914	- 32222.850		
1-14	- 153799.371	- 32223.700	+ 2270.627350	+ 2344.261800
K34	- 153779.503	- 32229.770	+ 1884.221100	+ 2958.274670
1-24	- 153779.125	- 32229.061	+ 2355.551250	+ 2310.436683
1-23	- 153798.914	- 32222.850	+ 2874.539754	+ 1808.006250
			+ 9384.939454	+ 9420.979403
	ハイ	メンセキ	= 36.039949	
	メンセキ		= 18.019974	

2 入ミ判

テコメイ	X	Y	(X-X0)*(YN-1-Y0)	(XN-1-X0)*(Y-Y0)
X0.Y0	- 153400.000	- 32000.000		
1-2	- 153457.906	- 32064.016		
1-15	- 153455.013	- 32064.750	+ 3521.712208	+ 3749.413500

***** カクヒツ メンセキ ケイサン *****

テツメイ	X	Y	(X-X0)*(YN-1-Y0)	(XN-1-X0)*(Y-Y0)
1-16	- 153459.332	- 32066.669	+ 3841.747000	+ 3667.661697
1-2	- 153457.906	- 32064.016	+ 3860.535114	+ 3798.197312
			+ 11223.994322	+ 11215.272509
		ハイ	= 8.721813	
		メンセキ	= 4.360906	

7 スミキリ

テツメイ	X	Y	(X-X0)*(YN-1-Y0)	(XN-1-X0)*(Y-Y0)
X0.Y0	- 153600.000	- 32100.000		
1-7	- 153669.340	- 32104.213		
1-17	- 153666.441	- 32104.952	+ 279.915933	+ 343.371680
1-18	- 153670.765	- 32106.863	+ 350.428280	+ 455.984583
1-7	- 153669.340	- 32104.213	+ 475.880420	+ 298.132945
			+ 1106.224633	+ 1097.489208
		ハイ	= 8.735425	
		メンセキ	= 4.367712	

11 スミキリ

テツメイ	X	Y	(X-X0)*(YN-1-Y0)	(XN-1-X0)*(Y-Y0)
X0.Y0	- 153600.000	- 32100.000		
1-11	- 153675.332	- 32102.686		
1-19	- 153676.746	- 32105.317	+ 206.139756	+ 400.540244
1-20	- 153678.229	- 32101.947	+ 415.943593	+ 149.424462
1-11	- 153675.332	- 32102.686	+ 146.671404	+ 210.123094
			+ 768.754753	+ 760.087800
		ハイ	= 8.666953	
		メンセキ	= 4.333476	

12 スミキリ

テツメイ	X	Y	(X-X0)*(YN-1-Y0)	(XN-1-X0)*(Y-Y0)
X0.Y0	- 153700.000	- 32000.000		
1-12	- 153727.254	- 32089.451		
1-21	- 153724.337	- 32090.194	+ 2176.968987	+ 2458.147276
1-22	- 153728.663	- 32092.075	+ 2585.230622	+ 2240.829275
1-12	- 153727.254	- 32089.451	+ 2509.412050	+ 2563.934013
			+ 7271.611659	+ 7262.910564
		ハイ	= 8.701095	
		メンセキ	= 4.350547	

ゴウケイ

14 ^{LOT}~~BLOCK~~

732.068962

141 LOT

330.589644

142 LOT

401.489833 1/8 変更

ゴウケイ

732.079477

0.000000

2025 年 4 月

15 LOT

14-2 ^{LOT}~~BLCK~~

732.129928

14-2 LOT

330.582918

~~15 LOT~~

~~401.538432~~

2025 年

732.121350

0.000000

15 LOT
LOT
14-2 掛合米

元NO. X ₀ , Y ₀ =	X	Y	(X-X ₀)(Y _{N-1} -Y ₀)	(X _{N-1} -X ₀)(Y-Y ₀)
	-153700.000	-32100.000		
54	-153757.673	-32146.093		
13	-153771.342	-32171.546	3288.366806	4126.272458
36	-153774.852	-32178.078	5355.361192	5570.240676
37	-153757.038	-32187.644	4453.412964	6560.328688
55	-153739.954	-32155.610	3501.728376	3171.883180
54	-153757.673	-32146.093	3207.195530	1841.599722
			19806.064868	21270.324724
			平均メソセキ=	1464.259856
			メソセキ=	732.129928

14-2 LOT

元NO. X ₀ , Y ₀ =	X	Y	(X-X ₀)(Y _{N-1} -Y ₀)	(X _{N-1} -X ₀)(Y-Y ₀)
	-153700.000	-32100.000		
54	-153757.673	-32146.093		
135	-153765.440	-32160.556	3016.325920	3492.446188
138	-153747.680	-32170.096	2887.310080	4587.082240
55	-153739.954	-32155.610	2800.615584	2651.484800
54	-153757.673	-32146.093	3207.195530	1841.599722
			11911.447114	12572.612950
			平均メソセキ=	661.165836
			メソセキ=	330.582918

15 LOT

元NO. X ₀ , Y ₀ =	X	Y	(X-X ₀)(Y _{N-1} -Y ₀)	(X _{N-1} -X ₀)(Y-Y ₀)
	-153700.000	-32100.000		
135	-153765.440	-32160.556		
13	-153771.342	-32171.546	4320.186152	4681.970240
36	-153774.852	-32178.078	5355.361192	5570.240676
37	-153757.038	-32187.644	4453.412964	6560.328688
138	-153747.680	-32170.096	4178.865920	3998.135648
135	-153765.440	-32160.556	4587.082240	2887.310080
			22894.908468	23697.985332
			平均メソセキ=	803.076864
			メソセキ=	401.538432

51774 797

~~15~~

~~16 BLOCK~~

~~1393.013304~~

~~15 LOT~~

~~330.584248~~

~~16 LOT~~

~~330.583117~~

~~17 LOT~~

~~330.584336~~

~~18 LOT~~

~~402.056111~~

51774

1393.809812

0.000000

15

16 BLOCK

元NO. X ₀ ・Y ₀ ＝	X	Y	(X-X ₀)(Y _{N-1} -Y ₀)	(X _{N-1} -X ₀)(Y-Y ₀)
	-153700.000	-32100.000		
135	-153765.440	-32160.556		
13	-153771.342	-32171.546	4320.186152	4681.970240
23	-153798.914	-32222.850	7076.901044	8764.364700
24	-153779.125	-32229.061	9720.506250	12765.939754
138	-153747.680	-32170.096	6153.628480	5546.346000
135	-153765.440	-32160.556	4587.082240	2887.310080
			31858.304166	34645.930774
			平均値＝	2787.626608
			標準値＝	1393.813304

15 LOT

元NO. X ₀ ・Y ₀ ＝	X	Y	(X-X ₀)(Y _{N-1} -Y ₀)	(X _{N-1} -X ₀)(Y-Y ₀)
	-153700.000	-32100.000		
135	-153765.440	-32160.556		
13	-153771.342	-32171.546	4320.186152	4681.970240
136	-153773.190	-32174.985	5236.451740	5349.579870
137	-153755.387	-32184.548	4153.194195	6188.068120
138	-153747.680	-32170.096	4031.248640	3882.407152
135	-153765.440	-32160.556	4587.082240	2887.310080
			22328.162967	22989.335462
			平均値＝	661.172495
			標準値＝	330.586248

16 LOT

元NO. X ₀ ・Y ₀ ＝	X	Y	(X-X ₀)(Y _{N-1} -Y ₀)	(X _{N-1} -X ₀)(Y-Y ₀)
	-153700.000	-32100.000		
136	-153773.190	-32174.985		
56	-153780.924	-32189.376	6068.086140	6541.429440
59	-153763.074	-32198.963	5637.301824	8008.481812
137	-153755.387	-32184.548	5481.263681	5332.780552
136	-153773.190	-32174.985	6188.068120	4153.194195
			23374.719765	24035.885999
			平均値＝	661.166234
			標準値＝	330.583117

17 LOT

元NO. X ₀ , Y ₀ =	X	Y	(X-X ₀)(Y _{N-1} -Y ₀)	(X _{N-1} -X ₀)(Y-Y ₀)
	-153700.000	-32100.000		
56	-153780.924	-32189.376		
57	-153788.638	-32203.729	7922.109888	8394.165596
58	-153770.742	-32213.341	7337.996918	10046.319558
59	-153763.074	-32198.963	7148.870234	7000.840546
56	-153780.924	-32189.376	8008.481812	5637.301824
			30417.458852	31078.627524
			平均メソセキ=	661.168672
			メソセキ=	330.584336

18 LOT

元NO. X ₀ , Y ₀ =	X	Y	(X-X ₀)(Y _{N-1} -Y ₀)	(X _{N-1} -X ₀)(Y-Y ₀)
	-153700.000	-32200.000		
57	-153788.638	-32203.729		
23	-153798.914	-32222.850	368.850306	2025.378300
24	-153779.125	-32229.061	1808.006250	2874.539754
58	-153770.742	-32213.341	2055.833262	1055.606625
57	-153788.638	-32203.729	1182.519558	263.796918
			5415.209376	6219.321597
			平均メソセキ=	804.112221
			メソセキ=	402.056111

MENSEKI KEISAN

T E N	9 BLOCK		1 LOT		NO 1						
	X	BX	DMD.1	Y	DY	DMD.2	ALHA	DIST	DX * DMD.2	DY * DMD.1	
354	-153757.673			-32146.093							
6200	-153769.317	11.644	11.644	-32167.774	21.681	21.681	241-45-45	24.610	252.4535	252.4535	
7201	-153751.534	-17.783	5.505	-32177.325	9.551	52.913	331-45-34	20.186	-940.9518	52.5782	
135	-153739.954	-11.580	-23.858	-32155.610	-21.715	40.749	61-55-47	24.610	-471.8734	518.0764	
354	-153757.673	17.719	-17.719	-32146.093	-9.517	9.517	151-45-34	20.113	168.6317	168.6317	
		29.363			31.232				421.0852	991.7400	
		-29.363			-31.232				-1412.8252	0.0000	
									991.7400	991.7400	
							MENSEKI	=	495.87		

T E N	9 BLOCK		1 LOT		NO 1						
	X	BX	DMD.1	Y	DY	DMD.2	ALHA	DIST	DX * DMD.2	DY * DMD.1	
4200	-153769.317			-32167.774							
413	-153771.342	2.025	2.025	-32171.546	3.772	3.772	241-45-45	4.281	7.6383	7.6383	
5136	-153773.190	1.848	5.898	-32174.985	3.439	10.983	241-44-43	3.904	20.2965	20.2832	
137	-153755.387	-17.803	-10.057	-32184.548	9.563	23.985	331-45-26	20.209	-427.0049	-96.1750	
7201	-153751.534	-3.853	-31.713	-32177.325	-7.223	26.325	61-55-47	8.186	-101.4302	229.0629	
6200	-153769.317	17.783	-17.783	-32167.774	-9.551	9.551	151-45-34	20.186	169.8454	169.8454	
		21.656			16.774				197.7803	426.8299	
		-21.656			-16.774				-528.4351	-96.1750	
									330.6548	330.6548	
							MENSEKI	=	165.32		

総計 165.29

1-1 Block.

S. 61. 5. 29 變

