



C83

151-5-45<sup>2</sup>

331-5-45<sup>2</sup>

6140

61-7-25<sup>4</sup>

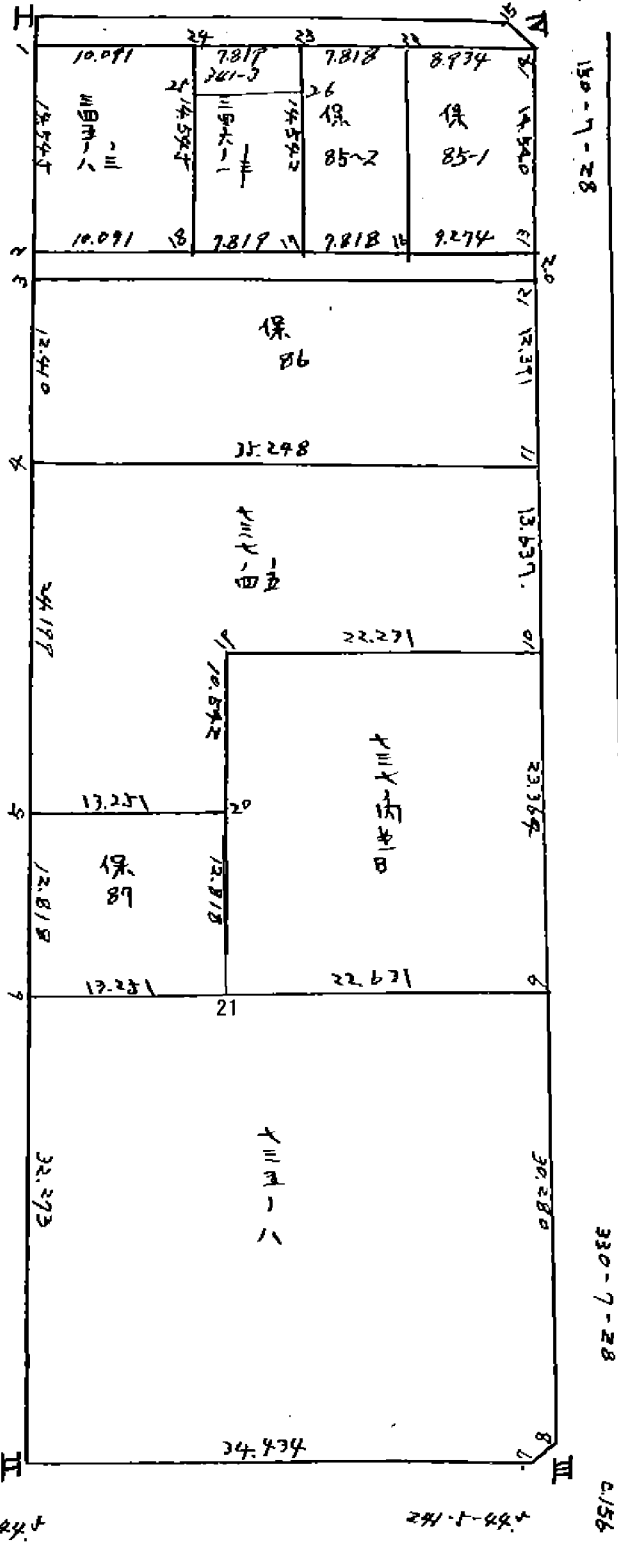
241-7-25<sup>4</sup>

282

150-7-28

330-7-28

2156



61-5-44<sup>4</sup>

241-5-44<sup>4</sup>

# 面積計算書

工区

ブロック

76

計算者

TATE

精算者

備考

点	①	②	③	④	⑤	⑥	③ × ⑤		② × ⑥	
	X	X - (定数)	$X_{n-1} - X_{n+1}$	Y	Y - (定数)	$Y_{n-1} - Y_{n+1}$	+	-	+	-
I	153.999.991	153.970.000 29.991	-	624.167 35.623.200	35.590.000 74.167	27	600.040.8		713.1009 907.9629	
15	153.979.929	9.929	-	496 35.595.400	5.696	31	82.6763 25.0129		311.9493	
14	153.980.697	10.697	+	496 35.592.749	2.749	27		48.2779		6.7096 294.2402
1	153.992.491	27.491	+	33.200 35.623.200	33.200	31		499.4276		863.7122
							682.7171 605.2559		019.9022	1.157.9224
							135.0116 128.0202	$\times 1/2 = 67.5058$		128.0202
									25.8205	
22	153.985.025	5.025	-	17.092 35.600.598	20.598	880	362.0610		4.4220	
14	153.980.697	0.697	+	8.283 35.592.749	12.749	16		105.999	10.5204	
13	153.993.308	13.308	+	17.092 35.585.504	5.504	880		94.0743		11.7110
16	153.997.789	17.789	-	8.283 35.593.629	13.629	16	112.8890			268.6071
							464.9500	199.6742	34.9425	290.2181
							265.3758	$\times 1/2 = 132.6879$		265.3756
									40.1239	

保85-1



# 面積計算書

工区

ブロック

76

計算者

TAKA

精算者

備考

保85-2

346-1  
346-3

	①	②	③	④	⑤	⑥	③ × ⑥		② × ⑥	
	X	X-(定数)	X <sub>n-1</sub> -X <sub>n+1</sub>	Y	Y-(定数)	Y <sub>n-1</sub> -Y <sub>n+1</sub>	+	-	+	-
23	-153988.814	8.814	16.442	-35.607.466	17.466	+ 119	288.9224			1.0488
22	-153.985.025	5.025	8.991	-35.600.598	10.598	- 13.827		95. 117.0	49.5209	
16	-153.992.789	17.789	16.442	-35.593.629	3.629	- 119		60.0309	2.1168	
17	-154001.567	21.567	8.991	-35.600.479	10.479	+ 13.827	94.0490 4.2770			298.4224
							392.9715		71.6877	299.4713
							227.8236	155.1479	219.5377	227.8236
							176.0976 × 1/2	113.9118		176.0976
									34.4583	
24	-153992.602	12.602	16.442	-35.614.335	14.335	+ 136	236.9862			1.7138
23	-153.988.814	8.814	8.965	-35.607.466	7.466	- 13.856		16.9326	122.1267	
17	-154001.567	21.567	16.442	-35.600.479	4.79	- 136		7.9188	2.9331	
18	-154005.346	25.346	8.965	-35.607.330	7.330	+ 13.856	65.7124			241.1941
							302.6996	74.8514	125.0598	332.9079
							227.8482 × 1/2	113.9241		227.8481
									34.4620	



# 面積計算書

工区

ブロック

76

計算者

TAKE

精算者

備考

345-3  
345-8

	①	②	③	④	⑤	⑥	③ × ⑤		② × ⑥	
	X	X-(定数)	X <sub>n-1</sub> -X <sub>n+1</sub>	Y	Y-(定数)	Y <sub>n-1</sub> -Y <sub>n+1</sub>	+	-	+	-
1	<del>152,997.491</del>	<del>7,491</del>	17,620	<del>35,623.200</del>	23,200	1,836	40,878.40		13,753.4	
24	<del>152,992.602</del>	2,602	7,815	<del>35,614.335</del>	14,335	1,870		112,601.4	41,293.7	
18	<del>154,005.346</del>	1,846	17,620	<del>35,607.330</del>	7,330	1,836		139,154.6		28,174.2
2	<del>154,010.222</del>	20,222	7,815	<del>35,616.171</del>	16,171	1,870	127,023.2			320,923.1
							535,807.2	241,756.0	55,047.1	349,090.7
							294,051.2 × 1/2 = <span style="border: 1px solid black; padding: 2px;">147,025.6</span>			294,051.2
									44,475.2	
3	<del>154,011.993</del>	21,993	1,180	<del>35,615.204</del>	35,204	31,663		534,396.7		695,731.0
2	<del>154,010.222</del>	20,222	18,665	<del>35,616.171</del>	36,171	29,700	675,131.7		600,593.4	
13	<del>152,993.308</del>	3,308	1,180	<del>35,585.504</del>	5,504	31,663	83,550.7		104,741.2	
12	<del>152,995.043</del>	5,042	18,665	<del>35,584.508</del>	4,508	29,700		84,141.8		149,747.4
							758,602.4	618,538.5	703,334.6	845,478.4
							140,143.9 × 1/2 = <span style="border: 1px solid black; padding: 2px;">70,071.9</span>			140,143.8
									21,196.7	

# 面積計算書

工区

ブロック

76

計算者

TAITE

精算者

備考

735-8

	①	②	③	④	⑤	⑥	③ × ⑤		② × ⑥	
	X	X - (定数)	X <sub>n-1</sub> - X <sub>n+1</sub>	Y	Y - (定数)	Y <sub>n-1</sub> - Y <sub>n+1</sub>	+	-	+	-
II	154.087.486	154.070.000 27.486	- 11.602	35.575.720	35.570.000 5.720	+ 45.749	414.4234			2446.9210
b	154.035.237	25.237	- 45.609	35.591.317	51.317	- 15.819	2340.5170			399.2241
9	154.037.877	7.877	+ 8.901	35.559.901	19.901	- 46.503		177.1388		366.3041
8	154.064.138	34.138	+ 28.962	35.544.814	4.814	- 14.333		139.4230		489.2999
7	154.066.839	26.839	+ 19.348	35.545.568	5.568	+ 30.906		107.7296		1.138.521
							2754.9404	4242914	1.254.8281	3585.4471
							2.270.6490 × 1/2	<b>1.165.3245</b>		2.270.6490
									252.5106	
7	154.066.839	154.060.000 6.839	- 1.734	35.545.568	5.568	+ 0.998	9.6549			6.818 <sup>16</sup>
8	154.064.138	4.138	- 0.967	35.544.814	4.814	- 1.958	4.6551			7.24 <sup>15</sup> / <sub>26</sub>
III	154.065.872	5.872	+ 2.701	35.543.818	3.818	+ 0.754		10.3097 <sup>31.24</sup>		4.4274
							14.2100	10.3097 <sup>31.24</sup>	7.24 <sup>15</sup> / <sub>26</sub>	11.2458 <sup>23.90</sup>
							3.9976	<b>1.9988</b>	0.6040	3.9975
							4.6663 × 1/2	<b>2.3331</b>		3.9975
14	153.980.697	153.970.000 10.697	+ 0.966	35.592.749	2.749	+ 1.751				18.7304
15	153.979.729	9.729	- 1.734	35.595.496	5.496	+ 0.996	9.5300			9.8892
IV	153.978.963	8.963	+ 0.768	35.593.745	3.745	- 2.747				
								2.8761		24.6213
							9.5300	5.5316	24.6213	28.6196
							3.9984 × 1/2	<b>1.9992</b>	0.6047	3.9983