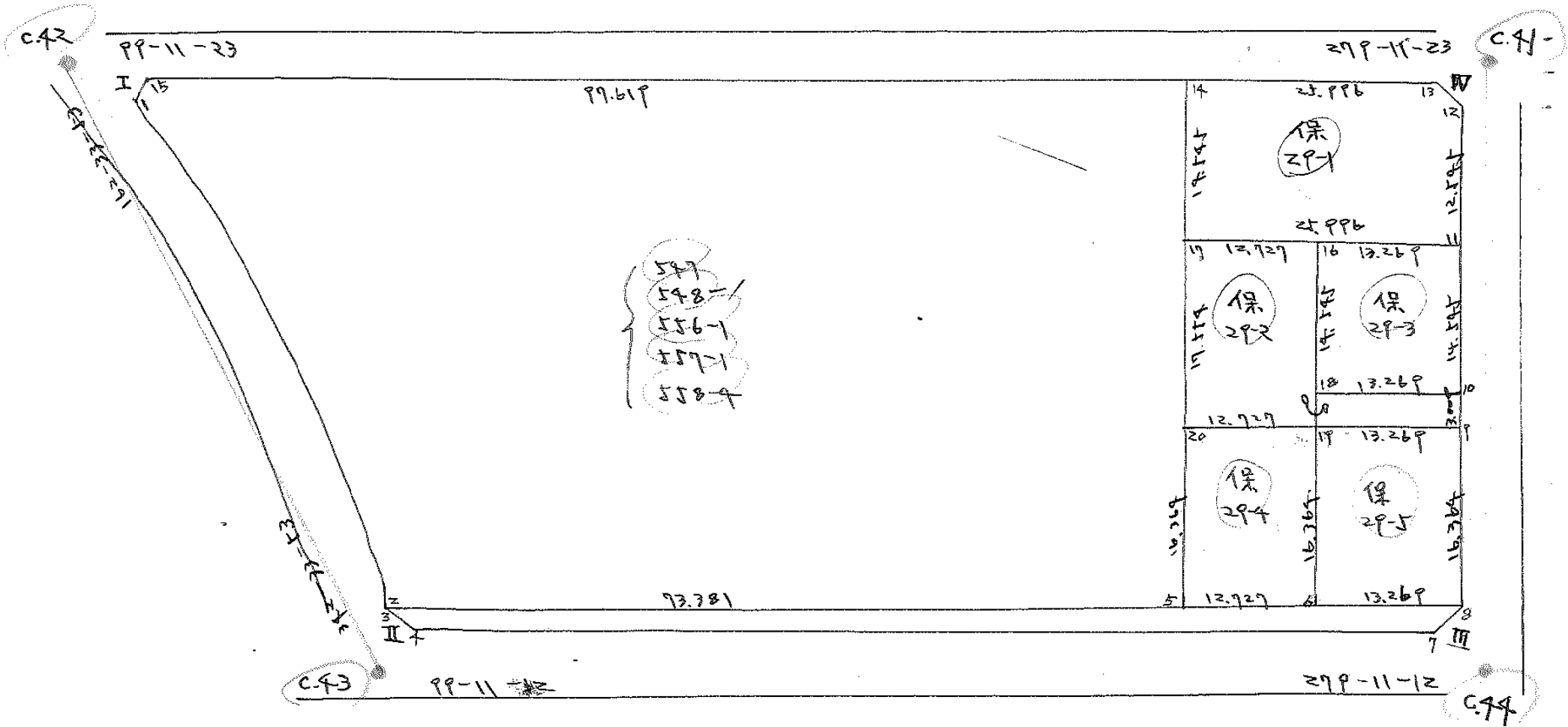


R(東中) 155.198



面積計算書

工区

ブロック

18

計算者

精算者

備考

保29-1

点	①	②	③	④	⑤	⑥	③	×	③	②	×	⑥
	X	X-(定数)	X _{n-1} -X _n	Y	Y-(定数)	Y _{n-1} -Y _n	+		-	+		-
		153 670			35 360							
11	-153 696 993	- 26.993	- 8.237	-35 362 950	- 2.950	- 27.664	24.2991			746.7342		
12	-153 684 606	- 19.606	- 14.681	-35 360 946	- 0.946	- 0.349	12.8882			5.0974		
13	-153 682 312	- 12.312	- 6.126	-35 362 601	- 2.601	+ 25.340	15.9337					211.9860
14	-153 678 480	- 8.480	+ 10.531	-35 386 286	- 26.286	+ 26.009			276.8178			220.5563
17	-153 692 843	- 22.843	+ 18.513	-35 388 610	- 28.610	- 27.376			529.6569	522.0642		
							57.1210		806.4747	1284.8859	572.5423	
							152.3577		1/2 = 376.1768		1122.3536	
										113.7934		

保29-3

点	①	②	③	④	⑤	⑥	③	×	③	②	×	⑥
	X	X-(定数)	X _{n-1} -X _n	Y	Y-(定数)	Y _{n-1} -Y _n	+		-	+		-
		153 650			35 360							
10	753 711 355	- 21.355	- 12.244	-35 365 273	- 5.273	- 15.421	64.5626			279.2144		
11	753 696 993	- 6.993	- 16.481	-35 362 950	- 2.950	+ 10.794	48.6189					75.2425
16	-153 699 874	- 4.874	+ 12.244	-35 376 047	- 16.047	+ 15.421			196.4774			75.1619
18	753 709 239	- 19.239	+ 16.481	-35 378 371	- 18.371	- 10.794			202.7724	202.2594		
							113.1815		499.2518	536.5748	140.5044	
							386.0903		1/2 = 193.0351		386.0904	

58 3931

面積計算書

工区

ブロック

18

計算者

精算者

備考

保29-2

点	①	②	③	④	⑤	⑥	③ × ⑤		② × ⑥	
	X	X-(定数)	X _{n-1} -X _{n+1}	Y	Y-(定数)	Y _{n-1} -Y _{n+1}	+	-	+	-
		153 690			-75 360					
9	153 714 327	- 24.327	+ 1.179	-35 365 953	- 5.753	- 26.143		6.7827	626.9807	
10	153 711 355	- 21.355	- 5.090	-35 365 293	- 5.293	+ 12.618	26.8395			269.4573
18	153 709 237	- 19.237	- 16.981	-35 378 371	- 18.371	+ 10.774	202.7724			207.2594
16	153 694 894	- 4.894	- 16.394	-35 376 049	- 16.049	+ 10.239	262.0745			47.9648 47.9648
17	153 692 843	- 2.843	+ 15.302	-35 388 610	- 28.610	+ 15.369		407.7902		43.6940
20	153 710 176	- 20.176	+ 21.484	-35 391 416	- 31.416	- 22.857		674.9413	466.1628	
							592.6864	1119.5142	1097.1475	570.3155
							526.8278	1/2 = 263.4140		526.8280

保29-5

		153 70			75 360					79.6827
8	153 730 985	- 20.985	- 14.039	-35 368 367	- 8.367	- 15.713	117.4643		331.8808	
9	153 714 327	- 9.327	- 18.277	-35 365 953	- 5.753	+ 10.485	105.1425			45.2605
19	153 712 208	- 2.208	+ 14.039	-35 378 852	- 18.852	+ 15.713		264.6632		24.6943
6	152 728 366	- 18.366	+ 18.277	-35 381 466	- 21.466	- 10.485		392.0840	192.5625	
							212.6118	656.9992	514.4483	80.0628
							434.3854	1/2 = 217.1927		434.3855

657007

面積計算書

工区

ブロック

18

計算者

精算者

備考

保29-4

547
548-1
556-1
557-1
558-4

点	① X	② X-(定数)	③ X _{n-1} -X _{n+1}	④ Y	⑤ Y-(定数)	⑥ Y _{n-1} -Y _{n+1}	③ × ⑤	② × ⑥		
							+	-		
6	153 728 366	- 18.366	- 14.127	381 466	- 11.466	- 15.178	161.9801	278.7691		
19	153 712 208	- 2.208	- 18.190	378 852	- 8.852	+ 9.949	161.0178	21.9673		
20	153 710 176	- 0.176	+ 14.127	372 715	- 21.415	+ 15.178	302.5297	2.6713		
5	153 726 335	- 16.335	+ 18.190	374 030	- 24.030	- 9.949	427.1057	162.5169		
							322.9999	739.6754	441.2960	24.6786
							416.6375	1/2 = 208.3187	416.6374	
								63.0164		
5	153 726 335	- 86.335	- 36.133	374 030	- 14.030	- 80.221	506.9459	5321.4600		
14	153 678 480	- 18.480	- 63.124	386 286	- 6.286	+ 86.609	376.7974	246.9112	1601.0887	
15	153 663 211	- 3.211	- 13.806	480 669	- 100.669	+ 95.450	1209.8362	206.4889		
1	153 664 674	- 4.674	+ 51.402	481 736	- 101.736	+ 14.162	5229.4338	66.1931	401.2068	
2	153 714 613	- 54.613	+ 61.661	466 507	- 86.507	- 89.706	5034.1086	4789.8877		
							2293.5795	10563.5419	10177.5608	1907.5786
							8269.9624	1/2 = 4134.9812	8269.9624	2

欠内 - 77
5457.8738

1227.5068

面積計算書

工区

ブロック

18

計算者

精算者

備考

点	①	②	③	④	⑤	⑥	③ × ⑤		② × ⑥	
	X	X-(定数)	X _{n-1} -X _n	Y	Y-(定数)	Y _{n-1} -Y _n	+	-	+	-
		-153 710			-25 760					
8	153 700 485	- 20.985	17.527	35 368 367	- 8.367	+ 95.847	146.6484		163.4257	1963.4257
2	153 714 613	- 4.613	15.792	35 466 509	- 106.509	+ 98.229	1681.9585		8.629	452.6690
3	153 714 693	- 4.693	2.385	35 466 496	- 106.996	- 2.224	253.1929		0.4372	
4	153 716 998	- 6.998	17.447	35 464 283	- 104.283	+ 75.836	944.7236		670.6603	29.1056
7	153 732 140	- 22.140	17.437	25 370 660	- 10.660	+ 95.916	113.2718		2123.5802	90.2576
							228.4019		2804.6777	2416.0967
							1828.8069		2217.7870	288.5830
							088.5829		12.9111	2.1370
									194.2915	
		-153 710			-25 760				58.7731	
II	153 716 679	- 6.679	2.305	35 466 257	- 2.257	+ 2.213	12020			14.7806
3	153 714 693	- 4.693	0.319	35 466 496	- 2.496	- 1.974		0.7962	92.639	
4	153 716 998	- 6.998	1.986	35 464 283	- 0.283	- 0.239		0.5620	1.6725	
							15.2020		10.9364	14.7806
							3.8441		1.9221	3.8442
									0.5814	

面積計算書

工区

ブロック

18

計算者

精算者

備考

点	①	②	③	④	⑤	⑥	③ × ⑤		② × ⑥	
	X	X-(定数)	X _{n-1} -X _{n+1}	Y	Y-(定数)	Y _{n-1} -Y _{n+1}	+	-	+	-
II	153 662 392	- 0.892	+ 1.463	-35 482 644	- 2.644	+ 1.067		3.8681		0.9519
I	153 664 674	- 2.674	+ 0.319	-35 481 776	- 1.736	- 1.975		0.5539	5.2811	
15	153 663 211	- 1.211	- 1.782	-35 480 669	- 0.669	+ 0.908	1.1921			1.0995
							3.2297	1/2 = 1.6149		3.2299
							角切RF = 0.0133			1.6016 0.08
III	153 732 459	- 2.459	+ 1.655	-35 368 686	- 0.686	+ 2.293		1.1353		5.6384
7	153 732 140	- 2.140	- 1.974	-35 370 660	- 2.660	- 0.719	5.2508		0.6326	
8	153 730 985	- 0.485	+ 0.719	-35 368 369	- 0.367	- 1.974		0.1170	0.9593	0.9593
							3.9985	1/2 = 1.9992		3.9985
								0.6007		
IV	153 682 631	- 0.631	+ 2.294	-35 360 627	- 0.627	- 1.655		1.4383	1.0449	
12	153 684 606	- 2.606	- 0.319	-35 360 946	- 0.946	+ 1.974	0.3019			5.1442
13	153 682 312	- 0.312	- 1.975	-35 362 601	- 2.601	- 0.319	5.1369		0.0995	
							4.0003	1/2 = 2.0002		4.0004

0.6005