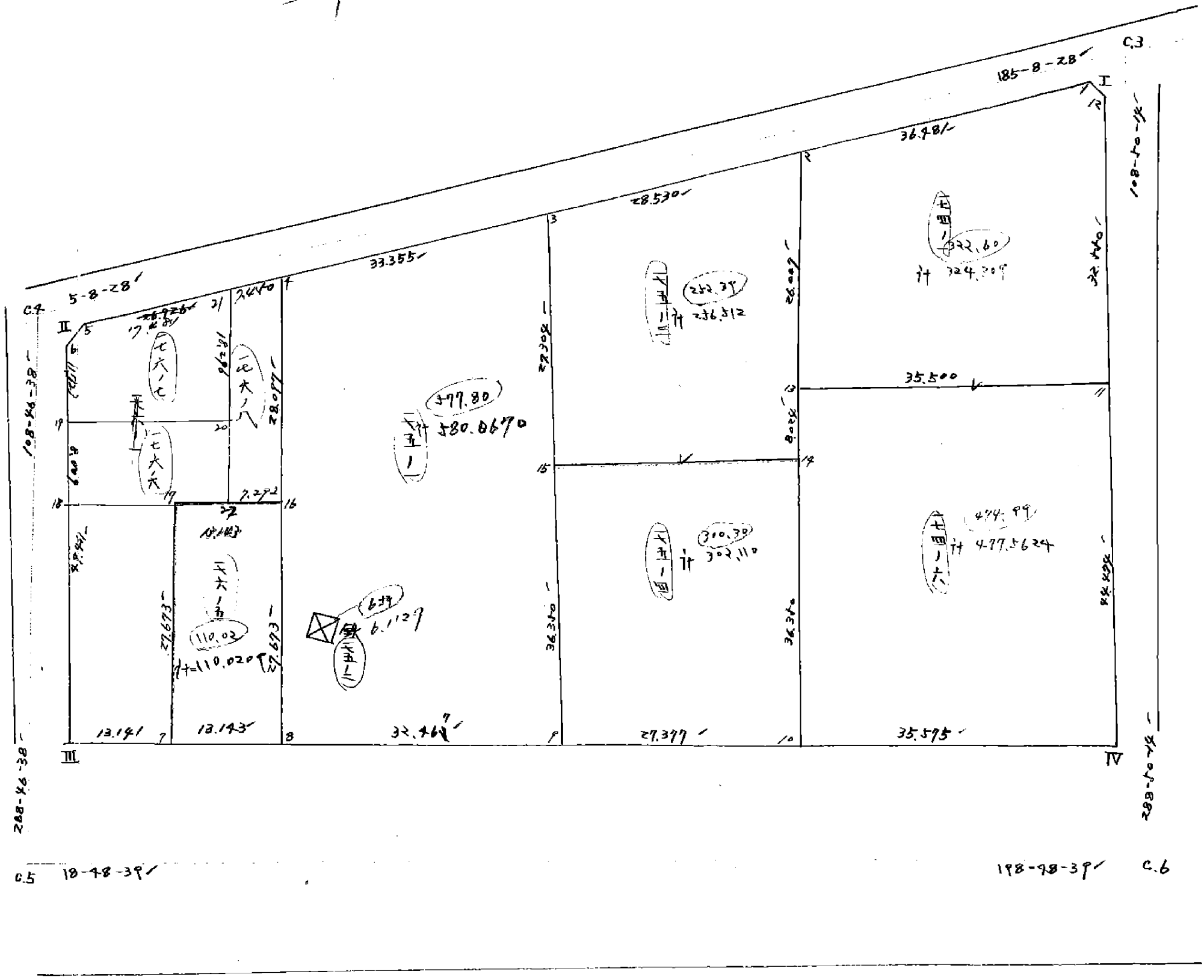
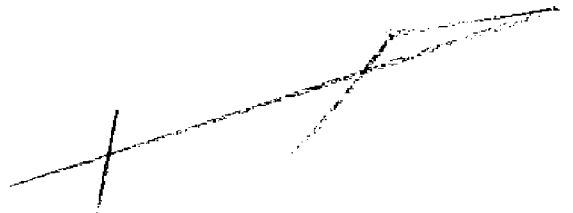


2



鉄 1

$\left\{ \begin{array}{l} -154\ 306\ 554 \\ -35\ 589\ 859 \end{array} \right. (1)$

$\left\{ \begin{array}{l} -153\ 307\ 788 \\ -35\ 586\ 005 \end{array} \right.$

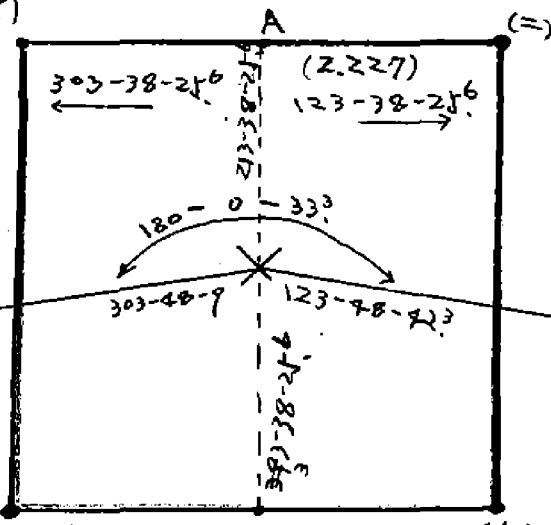
$\left\{ \begin{array}{l} -153\ 309\ 022 \\ -35\ 584\ 151 \end{array} \right.$

- ⊕ 1.239
- ⊖ 1.859

$C. 0.553\ 979 \times 2.227 =$
 $S. 0.832\ 530 \quad \times =$
 $\quad \quad \quad 23$
 ⊖ 1.854
 ⊕ 1.859

外鉄

鉄 2



$\left\{ \begin{array}{l} -154\ 310\ 361 \\ -35\ 590\ 329 \end{array} \right. (2)$

$\left\{ \begin{array}{l} -153\ 311\ 595 \\ -35\ 588\ 413 \end{array} \right.$

$\left\{ \begin{array}{l} -154\ 312\ 829 \\ -35\ 586\ 619 \end{array} \right.$

面積計算書

工区
ブロック
Z
計算者
精算者
備考

点	①	②	③	④	⑤	⑥	③	×	⑤	②	×	⑥
	X	X-(定数)	X _{n-1} -X _{n+1}	Y	Y-(定数)	Y _{n-1} -Y _{n+1}	+		-	+		-
175-1												
4	753 300 171	- 100 171	+ 51 073 35	627 086	127 686	- 49 848			6490.6632	4993.3240		4993.3240
8	753 313 017	- 113 017	- 2 386 35	574 247	74 247	63 306	956.7597			7471.1842		7471.1842
9	753 287 285	- 87 285	- 51 073 35	583 977	63 977	49 848	3257.4359			2257.2848		4350.9826
3	753 266 944	- 66 944	+ 12 386 35	624 096	124 096	63 306			1199.1010	4228.0238		4228.0238
			分筆あり	1539.7893	- 20.2077	1919.5765	4214.1956			12.464502		8508.9384
						580.0670	4244.1216		8089.7647	263		2589.0927
							3895.6326		1937.7843			3895.5688
							3875.5686		5861.7977			3875.5686
175-3												
3	753 266 944	- 66 944	+ 37 145	624 096	124 096	23 315			4609.5859	1560.7993		1560.7993
15	753 275 669	- 75 669	- 17 373	598 223	98 223	34 753	1706.4455			2629.7247		2629.7247
14	753 249 571	- 49 571	- 37 145	609 343	89 343	23 315	5318.6457					1155.7478
2	753 238 524	- 38 524	+ 17 373	621 539	121 539	34 753			2111.4970			1338.8245
							5025.0912			4190.5240		2494.5723
							1695.9517		1695.9517	4190.5240		7494.6219
							1695.9517		256.5126			1695.9517

面積計算書

工
区

ブ
ロ
ック

鉄 /

計
算
者

精
算
者

備
考

175-2

点	①	②	③	④	⑤	⑥	③	×	⑤	②	×	⑥
	X	X-(定数)	X _{n-1} -X _{n+1}	Y	Y-(定数)	Y _{n-1} -Y _{n+1}	+		-	+		-
		158 300.000		158 580.000								
イ	158 306.554	6.554	6.339	158 587.859	7.859	6.176			10.5232			40.4775
ロ	158 310.361	10.361	6.275	158 590.327	10.327	1.240			64.8019	12.8476		
ハ	158 312.829	12.829	6.339	158 586.619	6.619	6.176	8.2628			79.2319		
ニ	158 309.022	9.022	6.275	158 584.151	4.151	1.240	260675					11.1872
							74.9193	75.3251				
							51.0863	706.7611		92.0798		51.6647
							55.0778					
							40.4148	1/2 = 20.2074		40.4148		
										6.1107		

面積計算書

工
区

ブ
ロ
ック

→

計
算
者

精
算
者

備
考

点	①	②	③	④	⑤	⑥	③	×	⑤	②	×	⑥
	X	X-(定数)	X _{n-1} -X _{n-1}	Y	Y-(定数)	Y _{n-1} -Y _{n-1}	+	-	+	-	+	-
175-4												
15	703 275 669 ✓	75 669 +	37 714	35 598 224	98 224	- 25 563			3709.4197	1.934 3266		
9	703 287 285 ✓	87 285 -	14 298	35 563 780	63 780	- 43 271			911.9264		2776.9092	
10	703 261 371 ✓	61 371 -	37 714	35 554 953	64 953	+ 25 563			2072.4974			1.5688268 8
14	703 249 571 ✓	49 571 +	14 298	35 589 343	89 343	+ 43 271			2072.4577			1.5688268 8
									1277.4262		344.9867	2144.9867
									2984.4238		4981.8461	3718.8461
									2984.3718		4981.8084	3718.8461
									6223		5711.4974	2507.2965
									1997.4262		2358	1997.4262
									= 998.9182			4223
									998.7117 m ²			
									902.1101			
174-1												
2	703 238 524 ✓	38 524 +	42 791	35 621 539	121 539	- 21 514			5200.7753		828.8052	
13	703 246 966 ✓	46 966 -	25 186	35 596 934	96 934	- 35 968			2441.3797		1689.2730	
11	703 213 338 ✓	13 338 -	44 127	35 585 571	85 571	+ 19 442			8472			259.3173
12	703 202 829 ✓	2 829 -	9 163	35 616 376	116 376	+ 32 877			3776.6319			93.0090
1	703 204 175 ✓	4 175 +	35 695	35 618 448	118 448	+ 5 162			1066.3532			
									4728.0013			21.5555
									5801		9428.7766	2518.0783
									7284.6196			3 873.8818
									2144.1965		= 1072.0983	
									324.3097			2144.1965

面積計算書

工
区

フ
ロ
ック

Z

計
算
者

精
算
者

備
考

点	①	②	③	④	⑤	⑥	③	×	⑤	②	×	⑥
	X	X - (定数)	$X_{n-1} - X_{n+1}$	Y	Y - (定数)	$Y_{n-1} - Y_{n+1}$	+		-	+		-
												46.2947
II	703 226 994	26 994 -	2 636	35 629 499	29 499	+ 1 715			27.7593			
5	703 225 002	25 002 +	644	25 629 320	29 320	- 1 894			18.8820	47.3537		
6	703 227 638	27 638 +	1 992	35 627 605	27 605	+ 1 79			54.9891			4.7472
									77.7593	73.8711	47.3537	51.2419
									3.8882	1.9441		3.8882
									0.5880			

面積計算書

工区

ブロック

計算者

精算者

備考

点	①	②	③	④	⑤	⑥	③ × ⑤		② × ⑥	
	X	X-(定数)	X _{n-1} -X _{n+1}	Y	Y-(定数)	Y _{n-1} -Y _{n+1}	+	-	+	-
176-1		at 300.000			at 570.000					
4	at 300.171	0.171 + 6.985		at 627.086	57.086 + 55.072			398.2457		94.173
5	at 322.002	22.002 + 27.467		at 629.220	59.220 + 25.19			1629.3424		12.9760
6	at 327.638	27.638 + 17.895		at 627.605	57.605 - 46.597			1030.8414	1287.8478	
III	at 342.897	42.897 - 9.621		at 582.723	12.723 - 53.357		122.4079		22.888552	
8	at 318.017	18.017 - 42.726		at 574.248	4.248 + 44.363		181.5000			799.2881
	$109.4108 - (663.7046 + 301.1760 + 162.0428 + 597.9808) = 262.8046 \text{ m}^2$						3200.9079	20.58720	2576.7020	821.6814
				分筆あり			26.55074	2.16	Y ₂ = 1077.5108	7.5021
176-5		at 300.000			at 570.000					
16	at 309.162	9.162 + 2.586		at 600.466	30.466 + 30.456			109.2510		229.0378
17	at 321.603	21.603 + 21.296		at 604.704	34.704 - 21.980			739.0563	474.8239	
7	at 320.458	20.458 - 2.586		at 577.486	8.486 - 30.456		30.4707		927.6288	
8	at 318.017	18.017 - 21.296		at 574.248	4.248 + 21.980		70.4654			396.036
							120.8961	848.2073	1402.4627	675.0514
							727.4112	Y ₂ = 360.7046		727.4112
									110.0209	

面積計算書

工区	ブロック	2	計算者	精算者	備考					
占	①	②	③	④	⑤	⑥	③ × ⑤	② × ⑥		
176-7	X	X - (定数) 163,300.000	X _{n-1} - X _{n+1}	Y	Y - (定数) 535,600.000	Y _{n-1} - Y _{n+1}	+	-	+	-
5'	142 424 002	- 24 002	- 20.047	24 629 320	- 27.320	+ 0.149	627 7780			37253
21'	142 307 491	- 7.491	- 11.433	24 629 744	- 27.744	- 18.885	320 0868		140.3560	
20'	142 313 469	+ 13.469	+ 23.820	24 610 435	- 10.435	- 11.248		2485617	141.4993	
19'	142 331 411	- 31.411	+ 14.169	24 616 506	- 16.506	+ 17.170		2338735		5393268
6'	142 327 638	- 27.638	- 6.409	24 627 605	- 27.605	+ 12.814	1169204			354.1533
							1084.7852	482.4352	294.8473	877.2056
							602.3500 × 1/2 = 301.1750			602.3504
								91.1054坪		
176-6		153,300.000			600,000					
19'	142 331 411	- 31.411	- 20.520	24 616 506	- 16.506	+ 1.511	338.7031			47.4620
20'	142 313 469	+ 13.469	- 15.347	24 610 435	- 10.435	- 13.689	160.1459		184.3011	
22'	142 316 064	+ 16.064	+ 20.520	24 602 817	- 2.817	- 1.511		57.8048	24.2727	
18'	142 330 989	- 33.989	+ 15.347	24 608 920	- 8.924	+ 13.689		106.9566		465.2754
							4988.490	194.7614	208.6498	512.9374
							304.0886 × 1/2 = 152.0438			304.0896
								45.9932坪		

面積計算書

工
区

ブ
ロ
ック

2

計
算
者

精
算
者

備
考

点	①	②	③	④	⑤	⑥	③ × ⑤		② × ⑥	
	X	X _i - (定数)	X _{n-1} - X _{n+1}	Y	Y _i - (定数)	Y _{n-1} - Y _{n+1}	+	-	+	-
176-8 21	743 307 491	- 7.521	- 15.893	747 746	- 27.754	+ 27.269	441.0943			184.2249
44	743 300 171	- 0.171	+ 1.591	747 086	- 27.086	- 27.288		42.5521	4.8662	
16	743 309 162	- 9.162	+ 15.893	747 466	- 0.466	- 24.269		7.4061	222.3525	
27	743 316 066	- 16.064	- 1.591	747 817	- 2.817	+ 27.288	4.4244			438.3544
							445.5198	49.9582	224.0189	622.5803
							395.5616	- 197.7808		395.5616
								59.8286	✓	