

73-52-37

70-7-458

250-7-948

196-24-38

682-15

344-24-38

758-28-394

81-30-66

513-52-396 (BL2)

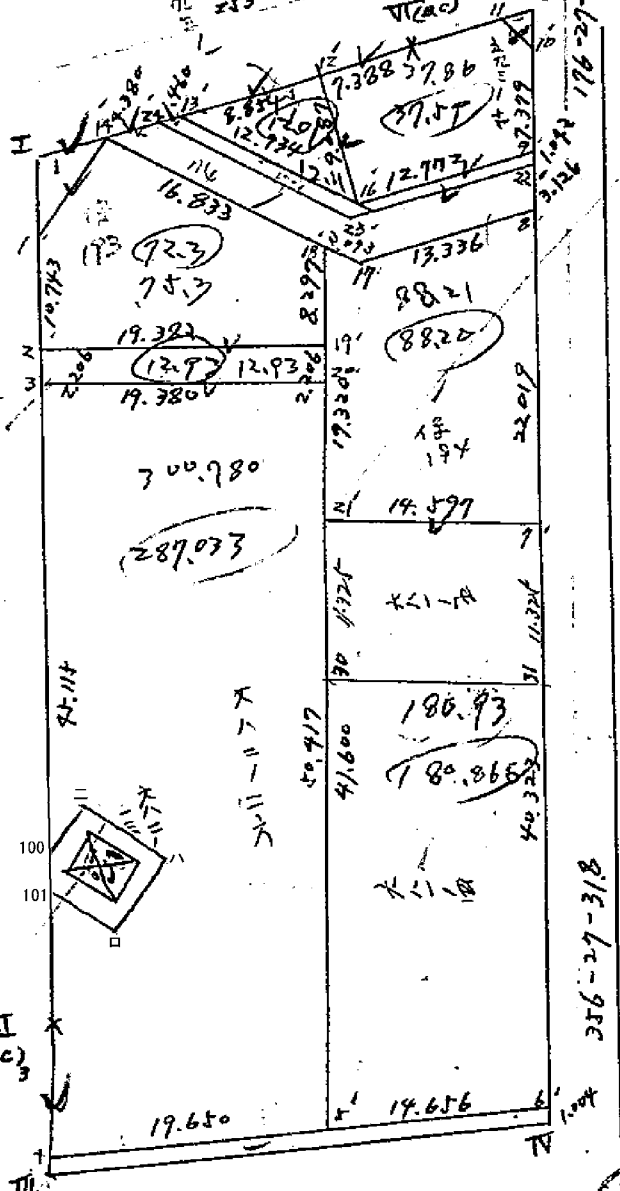
0.266

816-6-21

256-27-318

269

261-30-66



面積計算書

工
区

ブ
ロ
ック

鉄 8

計
算
者

精
算
者

備
考

682-13

点	①	②	③	④	⑤	⑥	③ × ⑤		② × ⑥	
	X	X-(定数)	X _{n-1} -X _{n+1}	Y	Y-(定数)	Y _{n-1} -Y _{n+1}	+	-	+	-
		154,420.000			34,940.000					
100	154,432.411	12.411 +	6.486	34,948.909	8.909 +	1.911		57.708		28.7174
101	154,434.958	14.958 +	5.007	34,948.751	8.751 -	4.851		43.827	72.546	
102	154,437.422	17.422 -	3.398	34,944.058	4.058 -	7.778	13.789		121.424	
103	154,431.558	11.558 -	8.948	34,940.978	0.978 +	2.782	8.782		37.487	17.222
=	154,428.474	8.474 +	0.858	34,946.840	6.840 +	7.934		5.840		67.222
							22.522	107.4319	8.0201	1016
							77.0476	107.4122	207.9828	123.0428
							84.8730			
							95.3646	Y ₂ = 42.4160		84.8720
							84.9184	Y ₂ = 124592		84.9185
								12.6229		

面積計算書

地区

ブロック

140

計算者

精算者

備考

保193

682-15

面積計算書

1. 区

ブロック

140

計算者

精算者

備考

682-26

593-7

点	① X	② X-(定数)	③ $X_{n-1} - X_n$	④ Y	⑤ Y-(定数)	⑥ $Y_{n-1} - Y_n$	③ +	⑤ -	② +	⑥ -
		194.300.000			194.900.000					
31	194.401.111	101.111	46.150	94.864	50.864	16.543		2347.3736		1672.6792
32	194.446.145	146.145	57.112	948.052	48.052	3.032		2504.0858	4413.1116	
44	194.453.223	153.223	47.434	947.832	47.832	17.656		199.6507	2011.2412	
51	194.450.319	150.319	53.228	928.396	28.396	16.823	1541.4622		2443.6590	
20	194.399.995	99.995	49.208	921.509	31.509	22.468	1550.4948			2246.6876
		194.315.442	42.442	951.852	19.852		2021.9570	5051.1101	1908.5198	3919.2668
				287.926.549			1989.1521	Σ = 994.5765		1989.1530
								欠円 - 2.2611.		994.3154 300.78
11	194.373.083	73.083	732	920.469	20.469	7.671		14.9833		560.6196
11	194.375.131	75.131	4475	926.135	26.135	12.645		116.9541		950.0314
12	194.377.558	77.558	10.998	933.114	33.114	3.888		362.5254		301.5254
16	194.386.109	86.109	4.207	930.023	30.023	15.106		126.3067	1300.7625	
9	194.381.765	81.765	11.710	918.008	18.008	11.559	210.8736		945.1216	
10	194.374.399	74.399	8.682	918.464	18.464	2.461	160.3044			183.0959
							371.1780	621.7695	2245.8844	1985.2924
							250.5915	1/2 = 125.2958		250.5917

欠円 - 0.1111

125.1847 37.868

面積計算書

工
区

ブ
ロ
ック
140

計
算
者

精
算
者

備
考

点	① X	② X - (定数)	③ X _{n-1} - X _n	④ Y	⑤ Y - (定数)	⑥ Y _{n-1} - Y _n	③ × ⑤ +	⑤ -	② × ⑥ +	⑥ -
		14.300.000			14.900.000					
12	14.377.558	77.558	5.866	933.114	55.114	17.531	194.2467	894.3212	1382.5689	726.7599
16	14.386.109	86.109	2.685	930.023	50.023	8	80.6117		1268.716	298.9414
13	14.377.044	77.044	8.551	929.849	49.849	3.091	355.8282		238.7537	
							14.6785	200.2777	1382.5689	1416.9478
							14.4008	2.12.2008		14.4008
		14.300.000			14.900.000					
18	14.389.511	89.511	18.336	932.157	32.157	672	589.6307		60.1413	
21	14.408.796	108.796	18.393	930.964	30.964	15.766	569.4208	171.2777		
71	14.407.904	107.904	22.871	916.391	16.391	17.213	374.8785		1126.7355	
81	14.385.925	85.925	17.444	917.291	17.251	13.901	209.6484		1194.4434	
17	14.390.460	90.460	3.586	930.272	30.272	14.406	108.6271		1303.1667	
							684.5269	1267.7786	3141.0132	2557.7644
							582.2517	1/2 291.6259	483.2519	
								88.2168		

保194

面積計算書

ブロック 140 計算者 精算者 備考

点 681-4

点	① X	② X-(定数)	③ X _{n-1} -X _n	④ Y	⑤ Y-(定数)	⑥ Y _{n-1} -Y _n	③ +	×	⑤ -	② +	×	⑥ -	
		74.400.000			74.900.000								
I	14.408.796	8.796	42.418	34.930.964	20.964	12.004			1313.3389			104.5949	
II	14.450.319	50.319	39.348	34.928.396	28.396	17.064			1117.6097	258.4434			
III	14.428.154	48.154	42.418	34.913.900	13.900	12.004	589.5684			578.0887			
IV	14.407.904	7.904	39.348	34.916.391	16.391	17.064	644.1169					134.8738	
	67-5 12等064		498.1312	165.3482	432.7030 m ²				1234.6844	7430.9477	1436.7321	240.4619	
					130.9168 m ²				1196.2623 1/2	598.1312		1196.2624	
									分筆あり	180.9340			
		74.400.000			74.900.000								
V	14.453.223	53.223	6.081	34.947.832	47.832	33.937			270.8663			1806.2209	
VI	14.454.234	54.234	4.067	34.947.837	47.837	33.937	174.5130			1843.6644			
VII	14.449.156	49.156	6.081	34.913.838	13.838	33.937	84.1488			1668.2071			
VIII	14.448.154	48.154	4.067	34.913.900	13.900	33.937			56.5313			1636.9470	
										278.7018	347.3976	55.11.8716	3443.1749
										68.6748 1/2	34.3479		68.6749
										10.3902			

681-5

	(1)	(2)	(3)	(4)	(5)	(6)	(7)	(8)	(9)	(10)
	X	X-(定数)	Xn - Xn1	V	Y-(定数)	Yn - Yn1				
30	154 420 099-20.	099	-10. 411	76 930 265	-30. 265	+ 15. 273	715. 0889			206. 9720
11	154 408 796-8.	796	-12. 195	34 930 964	-30. 964	+ 13. 874	377. 6089		122. 0257	
7	154 407 904-7.	904	+ 10. 411	76 916 391	-16. 391	- 15. 273		170. 6467	120. 7177	
31	154 ^{419 207} 428 154 -19.	207	+ 12. 195	34 915 691	-15. 691	+ 13. 874		191. 2517		266. 4779
							692. 6908	361. 9984	242. 7574	473. 4499
							320. 6964	$\frac{1}{2} = 165.3482 \text{ 等}$		334. 6965
								50. 0178. 等		

面積計算書

工
区

ブ
ロ
ック

140

計
算
者

精
算
者

備
考

点	①	②	③	④	⑤	⑥	③	×	⑤	②	×	⑥
	X	X - (定数)	X _{n-1} - X _n	Y	Y - (定数)	Y _{n-1} - Y _n	+		-	+		-
	154.300.000	300.000	-5.450		154.900.000							
13	154.377.000	77.000	7.900	154.947.849	47.849	12.919	381.8350					1272.4806
29	154.378.129	78.129	10.146	154.947.942	47.942	11.464						
23	154.387.197	87.197	2.146	154.930.090	30.090	24.998						
22	154.382.805	82.805	4.432	154.917.944	17.944	12.082	97.6968					1000.4500
9	154.381.765	81.765	2.304	154.918.008	18.008	12.079						987.6394
16	154.386.109	86.109	4.244	154.930.023	30.023	23.546	145.8286					2569.1786
							527.1354	686.8340	5007.4112	4755.9126		8566.907
							11.6986	72	22.8493	6566.907		
	154.300.000	300.000			154.900.000							
10	154.372.403	72.403	1.316	154.918.588	18.588	2.005	24.4618					145.1680
11	154.373.083	73.083	1.996	154.920.489	20.489	124						
10	154.374.399	74.399	6.80	154.918.464	18.464	1.881	12.5554					139.9445
							37.0173	40.8561	149.0067	145.1680		
							3.8388	15	1.9194	0.1506		3.8387

