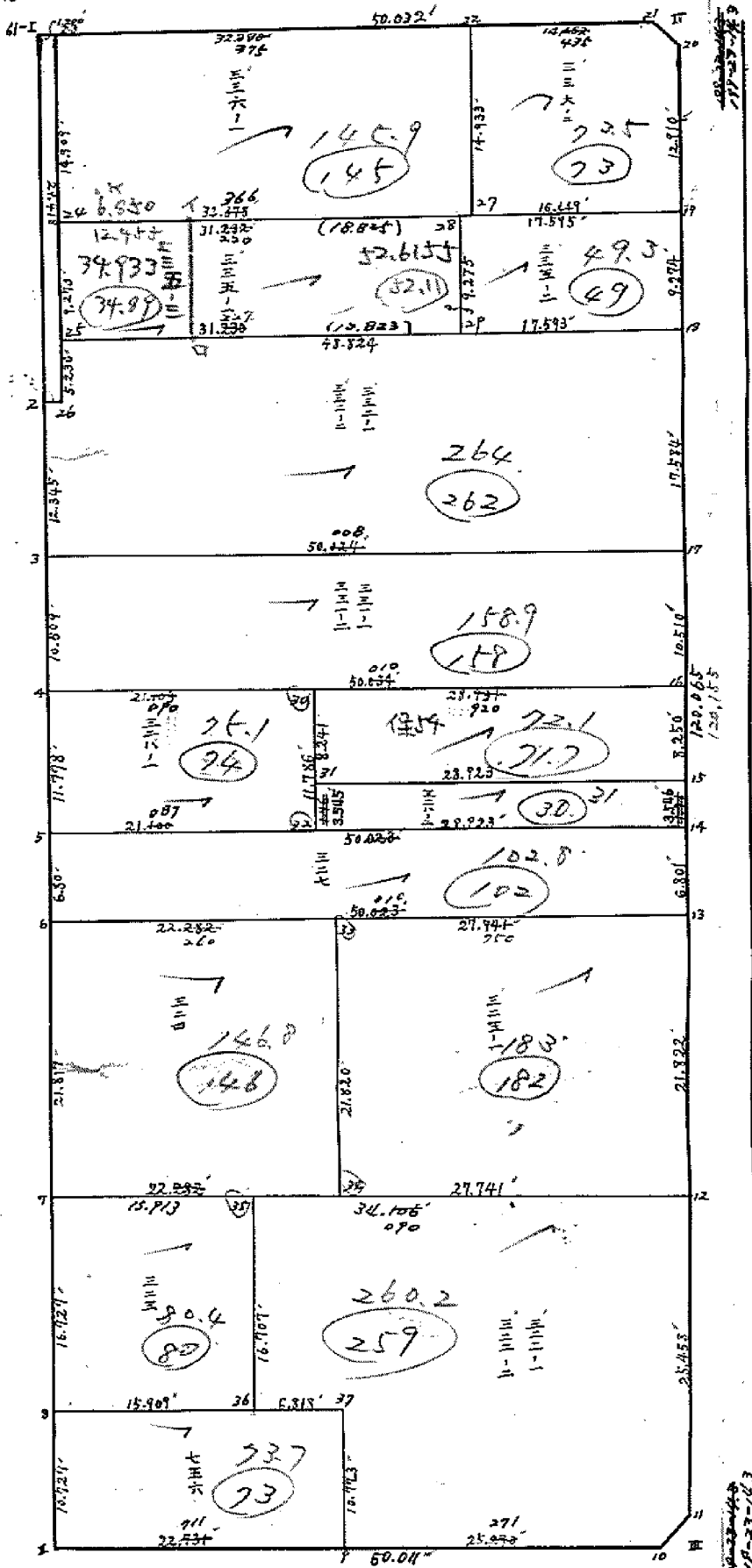


109-20-24
C114

287-20-24

522-22-661
199-22-661
C114



19-27-22
C114

109-22-43

287-22-43

面積計算書

区

ブロック

6/

計算者

精算者

備考

336-1
336-3

点	① X	② X-(定数)	③ X _{n-1} -X _n	④ Y	⑤ Y-(定数)	⑥ Y _{n-1} -Y _n	③ × ⑤ +	⑤ -	② × ⑥ +	⑥ -
		-153.900.000			-35.700.000					
23	-153.930.293	-30.293	-3.343	-35.759.494	-59.494	-35.491	198.8889		10.95.1288	
22	-153.941.014	-41.014	+24.781	-35.728.948	-28.948	-25.587	719.3603	2608	1049.4252	
27	-153.955.074	-55.074	+3.343	-35.733.907	-33.907	+35.491	113.3511			1954.6313
24	-153.964.357	-44.357	-24.781	-35.764.439	-44.439	+25.587	1576.8628			1134.9625
							1795.7512	830.9114	2124.5540	3089.3938
							965.0398	1/2 = 482.5199		965.0398
								145.9622		

336-2

		-153.900.000			-35.700.000					
22	-153.941.014	-41.014	-9.280	-35.728.948	-28.948	-18.579	268.6374		761.9991	
21	-153.945.794	-45.794	+9.329	-35.715.328	-15.328	-14.843	112.3389		699.7203	
20	-153.948.743	-48.743	+14.726	-35.714.105	-14.105	+3.062	207.9102			148.0262
19	-153.960.520	-60.520	+6.731	-35.718.399	-18.399	+19.802	123.7830			11.98.4190
27	-153.955.074	-55.074	-19.506	-35.733.907	-33.907	+10.558	661.3899			581.4712
							930.0273	443.8321	1441.9194	1929.9144
							486.1952	1/2 = 243.0976		486.1950
								73.5370		

面積計算書

工区

ブロック

61

計算者

精算者

備考

335-1

点	① X	② X-(定数)	③ X _{n-1} -X _n	④ Y	⑤ Y-(定数)	⑥ Y _{n-1} -Y _n	③ × ⑤ +	⑤ -	② × ⑥ +	⑥ -
		-153.900.000			-35.700.000					
24	-153.944.357	-44.357	+1.590	-35.764.439	-64.439	-32.527		102.4580	1442.8001	
28	-153.954.694	-54.694	+19.085	-35.734.988	-34.988	-26.377		669.9459	1442.6636	
29	-153.963.442	-63.442	-1.590	-35.738.062	-38.062	+32.527	60.5185			2063.5799
25	-153.953.104	-53.104	-19.085	-35.767.515	-67.515	+26.377	1288.5237			1480.9242

分筆後一部資料なし

289.4191 - 115.4833 = 173.9358

52.6155

1379.0422 770.2039 2885.4639 3464.3021

598.8383 287.4191 598.8384

335-3の面積を足す

335-2

		¹⁵³ -25.900.000			-35.700.000					
28	-153.954.694	-54.694	-2.922	-35.734.988	-34.988	-19.672	102.2349		1075.9403	
19	-153.966.526	-66.526	+14.573	-35.718.390	-18.390	-13.520		269.9974	818.2004	
18	-153.969.267	-69.267	+2.922	-35.721.468	-21.468	+19.672		62.9294		1362.6204
29	-153.963.442	-63.442	-14.573	-35.738.062	-38.062	+13.520	554.6775			859.9358

分筆後の座標なし

656.9124 330.7268 1894.1907 2220.3562

326.1856 1/2 = 163.0928 326.1856

49.3355

面積計算書

区: 市 ブロック: 61 計算者: 精算者: 備考:

332-1
332-2
332-3

①	②	③	④	⑤	⑥	③ ×	⑤	② ×	⑥
X	X - (定数)	X _{n-1} - X _{n-1}	Y	Y - (定数)	Y _{n-1} - Y _{n-1}	+	-	+	-
	¹⁵³ -35,700.000			-35,700.000					
25	-153 953 104	+ 11.223	-35 767 515	- 67.515	- 47.884		957. 9208	2537. 5215	
18	-153 969 267	+ 32.749	-35 721 468	- 21.468	- 40.210		703. 9553	2 785. 2260	
17	-153 985 853	+ 0.024	-35 727 305	- 27.305	+ 52.011		0. 6553		4551. 1533
3	-153 969 291	- 28.207	-35 774 479	- 74.479	+ 43.079	2100.8291			2984. 9869
2	-153 957 646	- 11.247	-35 770 384	- 70.384	- 5.227	791. 6088		301. 3156	
26	-153 958 044	- 4.542	-35 769 252	- 69.252	- 2.869	314. 5425		166. 5282	
						3206. 9804	1461. 4316	5790. 5913	7536. 1402
						1743. 5488	12872. 9744		1743. 5489

331-1
331-2
331-3

	¹⁵³ -35,700.000			-35,700.000					
3	-153 969 291	+ 2.649	-35 774 479	- 74.479	- 50.660		495. 2108	3510. 2820	
17	-153 985 853	+ 26.475	-35 727 305	- 27.305	- 43.686		722. 8998	3750. 5941	
16	-153 995 766	- 6.649	-35 730 793	- 30.793	+ 50.660	294. 9426			4851. 5056
4	-153 979 204	- 26.475	-35 777 965	- 77.965	+ 43.686	2064. 1233			3760. 1059
						2268. 8659	1218. 1106	7260. 8561	8311. 6114
						1050. 7553	1523. 2771		1050. 7553
						158. 9267			

面積計算書

区

ブロック

61

計算者

精算者

備考

328-3

保54

点	① X	② X-(定数)	③ X _{n-1} -X _n	④ Y	⑤ Y-(定数)	⑥ Y _{n-1} -Y _n	③ +	⑤ -	② +	⑥ -
		¹⁵³ -35.700.000			-35.700.000					
4	-153 979 204	- 79.204	- 4.125	-35 977 965	- 77.965	- 23.800	321.6056		1885.0552	
30	-153 986 189	- 86.189	+ 18.100	-35 958 072	- 58.072	- 15.980		1051.1032	13.99.3002	
32	-153 997 304	- 97.304	+ 4.125	-35 961 985	- 61.985	+ 23.800		255.6881		23/5.8352
5	-153 990 314	- 90.314	- 18.100	-328-3 872	- 81.872	+ 15.980	1481.8832			1443.2179
							1803.4888	1306.7913	3262.3554	3959.0529
							496.6975	1/2 = 248.3487		496.6975
								75.1254		
30	-153 986 189	- 86.189	+ 18.005	-35 958 072	- 58.072	- 30.015		104.8199	2586.9628	
16	-153 995 766	- 95.766	+ 17.358	-35 930 793	- 30.793	- 24.541		534.5048	2330.1934	
15	-154 003 547	- 103.547	- 18.005	-35 933 531	- 33.531	+ 30.015	60.5234			3107.9632
31	-153 993 961	- 73.961	- 17.358	-35 960 808	- 60.808	+ 24.541	1055.5052			2305.8969
										5413.8601
							1116.0286	60.9.3297	4937.1562	8521.8233
							496.7039			5413.8601
							496.7039	1/2 = 238.3519		496.7039

72.1014, ↓

面積計算書

工区
ブロック 61
計算者
精算者
備考

点	①	②	③	④	⑤	⑥	③	×	⑤	②	×	⑥
	X	X-(定数)	X _{n-1} -X _n	Y	Y-(定数)	Y _{n-1} -Y _n	+		-	+		-
328-2		¹⁵³ -35,700.000			-35,700.000							
31	-153 993 961	-93.961	+ 6.243	-35 760 808	-60.808	-28.454			379.6243	2673.5662		
15	-154 003 547	-103.547	+ 12.931	-35 733 531	-33.531	-26.100			433.5893	2702.5767		
14	-154 006 892	-106.892	- 6.243	-35 734 708	-34.708	+28.454	216.6820					3091.5049
32	-153 997 304	-97.304	- 12.931	-35 761 985	-61.985	+26.100	801.5280					2539.6344
							1018.2100	813.2136	5376.1429	5581.1393		
							204.9964	1/2 = 102.4982	204.9964			
								31.0057				
327-1 327-2		¹⁵³ -35,700.000			-35,700.000							
5	-153 990 314	-90.314	+ 10.164	-35 781 872	-51.872	-49.419			832.1470	4463.2295		
14	-154 006 892	-106.892	+ 22.992	-35 734 708	-34.708	-44.907			798.0063	4800.1990		
13	-154 013 306	-113.306	- 10.164	-35 736 965	-36.965	+49.419	375.7122					5599.4692
6	-153 996 728	-96.728	- 22.992	-35 784 127	-54.127	+44.907	1737.2479					4343.7692
							2309.9601	1630.1533	9263.4265	9943.2334		
							679.8068	1/2 = 339.9034	679.8069			
								102.8207				

面積計算書

工区

ブロック

61

計算者

精算者

備考

点	①	②	③	④	⑤	⑥	③	×	⑤	②	×	⑥
	X	X-(定数)	X _{n-1} -X _n	Y	Y-(定数)	Y _{n-1} -Y _n	+		-	+		-
324-1 324-2		¹⁵³ -35.900.000			-35.700.000							
6	-153 996 720	- 96.720	- 13.201	-35 784 127	- 84.127	- 28.229	1110.5605			2730.5399		
33	-154 004 107	- 104.107	+ 27.962	-35 763 134	- 63.134	- 12.758		1765.3529		1432.3091		
34	-154 024 690	- 124.690	+ 13.201	-35 770 369	- 70.369	+ 28.229		928.9411				3519.8790
7	-154 017 308	- 117.308	- 27.962	-35 791 363	- 91.363	+ 13.758	2554.6922					1613.9234
							2665.2529	2694.2940	4162.8388	5133.7944		
							990.9589	1/2 = 485.4793		970.9586		
								146.8574				
325-1		-154.000.000			-35.700.000							
33	-154 004 107	- 4.107	- 11.384	-35 763 134	- 63.134	- 33.404	718.9174			137.1902		
13	-154 013 206	- 13.306	+ 29.782	-35 736 965	- 36.965	- 18.926		1100.8916		251.8293		
12	-154 033 809	- 33.809	+ 11.384	-35 744 208	- 44.208	+ 33.404		503.2638				1132.0281
34	-154 024 690	- 24.690	- 29.782	-35 770 369	- 70.369	+ 18.926	2095.9295					467.2829
							2814.4469	1604.1554	389.0195	1599.3110		
							1210.2915	1/2 = 605.2457		1210.2915		
								183.0565				

面積計算書

I
K

ブ
ロ
ック

61

計
算
者

精
算
者

備
考

323-3

756C

点	①	②	③	④	⑤	⑥	③ × ⑤		② × ⑥	
	X	X - (定数)	$X_{n-1} - X_n$	Y	Y - (定数)	$Y_{n-1} - Y_n$	+	-	+	-
		-154,000.000			-25,700.000					
7	-154,017,308	-17,308	-10.502	-25,791,263	-91.363	-20.554	959.4942		355.7486	
35	-154,022,585	-22,585	+21.056	-25,776,357	-76.357	-9.460		1,607.7727	213.6541	
26	-154,038,144	-38,144	+10.502	-25,781,903	-81,903	+20.554		860.1453		788.5336
8	-154,033,087	-33,087	-21.056	-25,796,911	-96.911	+9.460	2040.5580			313.0030
							3000.0522	246.77182	569.4027	1101.5366
							532.1390	1/2 = 266.0670		532.1399
								80.4052		
		-154,000.000			-25,700.000					
8	-154,033,087	-33,087	-2.580	-25,796,911	-96.911	-24.998	250.0203		827.1088	
37	-154,060,307	-40,307	+17.654	-25,775,471	-75.471	-17.864		1332.3650	925.7428	
P	-154,050,741	-50,741	+2.580	-25,779,067	-79.067	+24.998		203.9412		1268.7235
II	-154,063,206	-43,206	-17.654	-25,800,469	-100.469	+17.864	1973.6797			771.8319
							2023.7100	1536.3062	1552.8516	2040.2554
							489.4038	1/2 = 73.7011		489.4038
								73.7198		

面積計算書

区

ブロック

61

計算者

精算者

備考

322-1
322-2

点	①	②	③	④	⑤	⑥	③ × ⑤		② × ⑥	
	X	X - (定数)	$X_{n-1} - X_n$	Y	Y - (定数)	$Y_{n-1} - Y_n$	+	-	+	-
		-154.000.000			-25.700.000					
35	-154 022 585	- 22.585	- 4.252	-35 776 257	- 76.357	- 37.695	341. 6975		851. 3415	
12	-154 033 889	- 33.889	+ 35.317	-35 744 208	- 44.208	- 23.698		1561. 2939	803. 1015	
11	-154 057 902	- 57.902	+ 25.236	-35 752 659	- 52.659	+ 11.002		1328. 9025		639 0398
10	-154 059 125	- 59.125	- 7.161	-35 755 210	- 55.210	+ 26.328	395. 3588			1560. 1905
9	-154 050 741	- 50.741	- 18.878	-35 779 067	- 79.067	+ 20.261	1462. 2909			1028. 0639
37	-154 060 309	- 40.309	- 12.600	-35 775 476	- 75.476	+ 2.856	939. 1095			116. 0298
36	-154 038 461	- 38.461	- 17.722	-35 781 903	- 81.903	+ 0.206	1479. 6120			33. 9905
							4611. 0632	2890. 1964	1654. 4430	3395. 3100
							1720. 8668	1/2 = 860. 4334	2602811	1720. 8670
		-153.900.000			-25.700.000					
I	-153 929 895	- 29.895	- 27.253	-35 760 626	- 60.626	- 10.890	1658. 3029		325. 5365	
23	-153 930 293	- 30.293	+ 28.149	-35 759 494	- 59.494	+ 8.626		1674. 6766		261. 3079
26	-153 958 064	- 58.064	+ 27.353	-35 769 252	- 69.252	+ 10.890		1894. 2999		632. 0991
2	-153 957 646	- 57.646	- 28.149	-35 770 384	- 70.384	- 28.626	1981. 2392		499 2543	
							3 639 5421	3568. 9465	822. 8108	893. 4065
							70. 5956	1/2 = 35. 2978	106775	76. 5959

面積計算書

区
E

ブロック

61

計算者

精算者

備考

点	①	②	③	④	⑤	⑥	③	×	⑤	②	×	⑥
	X	X-(定数)	$X_{n-1}-X_{n.1}$	Y	Y-(定数)	$Y_{n-1}-Y_{n.1}$	+		-	+		-
		-153.900.000			-35.700.000							
19	-153 946 456	-46.456	+ 2.549	-35 713 441	-13.441	- 1.223			34. 2611	56. 8156		
20	-153 948 343	-48.343	- 0.662	-35 714 105	-14.105	+ 1.887	9. 3395					91. 2232
21	-153 945 794	-45.794	- 1.887	-35 715 328	-15.328	- 0.664	28. 9239			30. 4072		
							38. 2614	34. 2611		89. 2228	91. 2232	
							4. 0004	1/2 = 2. 0002	0.6050			4. 0004
		-154.000.000			-35.700.000							
III	-154 059 789	-59.289	+ 1.223	-35 763 323	-53.323	+ 2.551			2140 65. 4212			152. 5219
10	-154 059 125	-59.125	- 1.887	-35 755 210	-55.210	4 0.664	104. 1812			39. 259.0		
11	-154 057 902	-57.902	+ 0.664	-35 752 659	-52.659	- 1.887			34. 9655	109. 2610		
							104. 1812	100. 5849	1795	148. 5200	152. 5219	
							4. 0017	1/2 = 2. 0008	0.6052			4. 0017