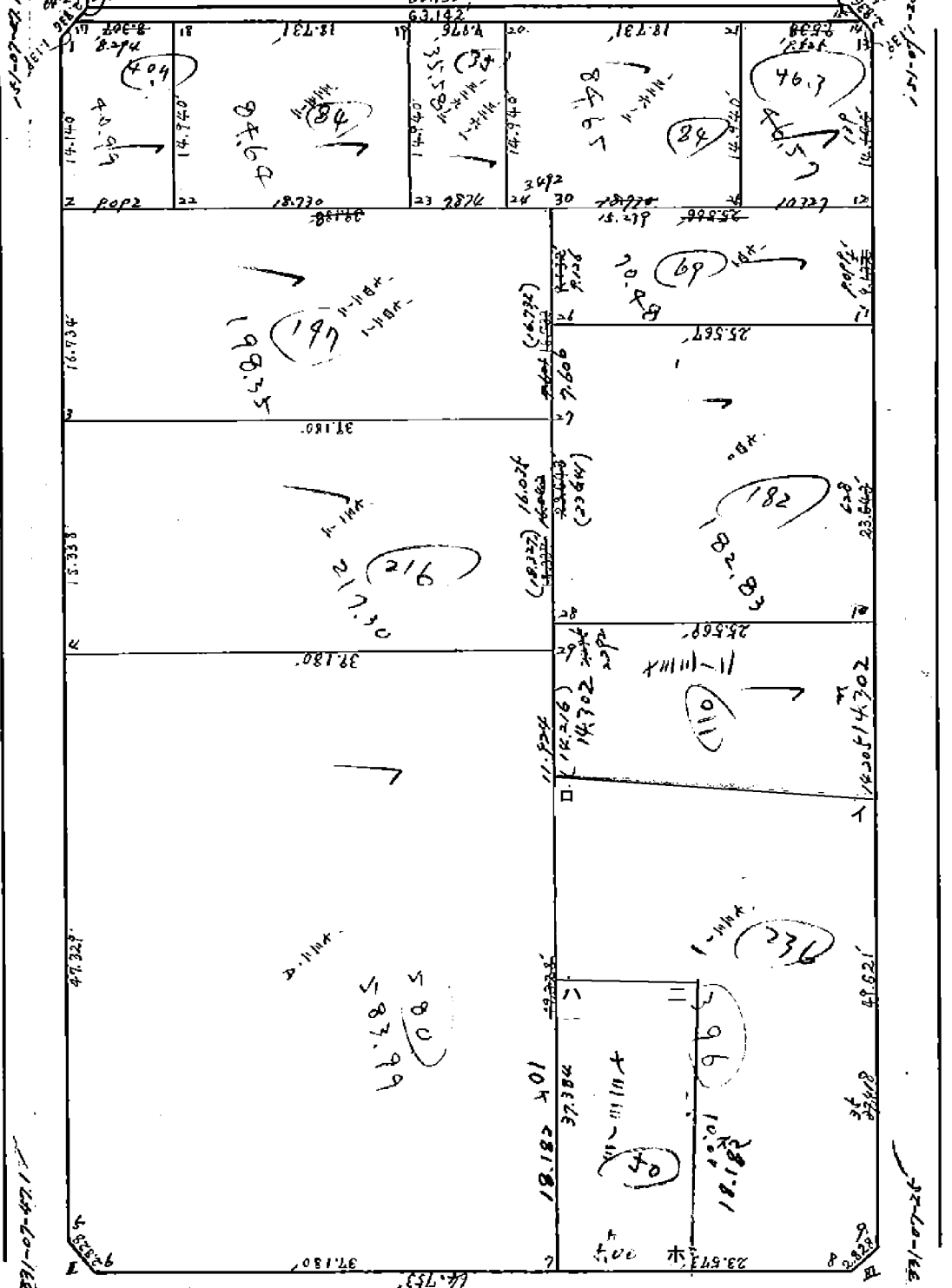


C12 61-07-22-41

241-07-22-41

12-90-11 1117

12-90-12 1118



面積計算書

区 1
 ブロック 64
 計算者
 精算者
 備考

保62

741

点	①	②	③	④	⑤	⑥	③ × ⑤		② × ⑥	
	X	X - (定数)	X _{n-1} - X _n	Y	Y - (定数)	Y _{n-1} - Y _n	+	-	+	-
		-54.000.000			-75.600.000					
21	-154 038 726	- 38.726	- 17.685	-35 700 159	- 100.159	- 1.127	1771.3119		43.6443	
14	-154 034 127	- 34.127	- 4.399	-35 691 819	- 91.819	- 9.427	323.4444		321.9152	
13	-154 026 441	- 34.641	+ 12.698	-35 690 732	- 90.732	- 7.917		1152 1149	272 6693	
12	-154 026 825	- 46.825	+ 17.371	-35 683 902	- 83.902	+ 2.214		1759 4616		1036 705
25	-154 051 812	- 51.812	- 8.099	-35 692 946	- 92.946	+ 16.257	752 7696			842 3076
							2919 5259	2609 5765	638 0287	945 9981
							307 9494	1/2 153 9747		307 9494
								46 5773		
		-154.000.000			35.600.000					
30	-154 059 170	- 59.170	- 20.338	-35 706 291	- 106.291	- 17.982	2161 9463		1063 9949	
12	-154 026 825	- 46.825	- 4.376	-35 683 902	- 83.902	- 26.784	367 1551		1234 1608	
11	-154 054 794	- 54.794	+ 20.338	-35 679 507	- 99.507	+ 17.982		1619 0133		985 3057
26	-154 067 163	- 67.163	+ 4.376	-35 701 886	- 101.884	+ 26.784	2528 9014	445 8443		1798 8937
							2528 9014	2062 8596	2318 1559	2984 1994
							466 0438	1/2 233 0219		466 0437
								70 4891		

面積計算書

区

ブロック

64.

計算者

結算者

TAKE

備考

保61

325-2

点	① X	② X - (定数)	③ X _{n-1} - X _n	④ Y	⑤ Y - (定数)	⑥ Y _{n-1} - Y _n	③ × ⑤ +	⑤ -	② × ⑥ +	⑥ -	
		-154,000,000			25,700,000						
17	-154,064,623	64,623	- 5.092	-25,747,119	47,119	- 7,576	237,9299		489,5838		
18	-154,060,618	60,618	+ 9.078	-25,739,857	39,857	- 14,474		361,8218	899,3849		
22	-154,073,701	73,701	+ 17.473	-25,732,645	32,645	+ 0.250		590,4060		55,2959	
2	-154,078,091	78,091	- 7.991	-25,740,607	40,607	+ 14,788	3244,905			1134,8099	
1	-154,065,710	65,710	- 13.468	-25,747,433	47,433	+ 6,512	638,8276			429,9035	
							1203,2480	32	2298,366	9689	1639,9889
							291,0202	1/2	135,5101		291,0202
							40,9918				
		-154,000,000			25,700,000						
18	-154,060,618	60,618	- 22.127	-25,739,857	39,857	- 9,189	881,9158		557,0188		
19	-154,051,574	51,574	+ 4.040	-25,723,456	23,456	- 23,612		94,7622	1219,8168		
23	-154,064,658	64,658	+ 22.127	-25,716,244	16,244	+ 9,189	359,4309		594,1423		
22	-154,073,701	73,701	- 4.040	-25,732,645	32,645	+ 23,612	731,8858		1940,3019		
							1013,8016	454,1931	1974,8356	2334,4440	
							5396,085	1/2	279,8027		559,6084
							84,6407				

面積計算書

工
区

ブ
ロ
ック

60

計
算
者

精
算
者

備
考

点	①	②	③	④	⑤	⑥	③ × ⑤		② × ⑥	
	X	X - (定数)	X _{n-1} - X _n	Y	Y - (定数)	Y _{n-1} - Y _n	+	-	+	-
		-154.000.000			-75.700.000					
I	-154 063 959	- 63.959	- 2.717	-35 748 399	+ 48.399	- 0.796	131.5000		50 9113	
16	-154 062 993	- 62.993	+ 1.751	-35 746 647	+ 46.647	- 0.956		81 6988	60 2213	
1	-154 065 710	- 65.710	+ 0.966	-35 747 433	- 47.443	+ 1.752		85 8299		115 1239
							131.5000	127 5087	111 1326	115 1239
							3.9913	1/2 = 1.9956		3.9913
								0.6036		
II	-154 151 991	- 51.991	- 0.785	-35 699 862	+ 99.862	+ 2.717	78 3916			141 2595
5	-154 160 240	- 50.240	- 0.966	-35 700 828	+ 100.828	- 1.751	97 3998		87 9902	
6	-154 151 025	- 51.025	+ 1.751	-35 698 111	- 98.111	- 0.966		171 7923	49 2901	
		-154.100.000			-35.600.000					
							195.9914	171 7923	137.2603	141 2595
							3.9994	1/2 = 1.9997		3.9992
								0.6048		
III	-154 120 701	- 20.701	+ 2.717	-35 643 160	- 43.160	+ 0.785		117 2659		16 2502
8	-154 121 667	- 21.667	- 1.751	-35 644 911	- 44.911	+ 0.966	78 6391			20 9303
9	-154 118 950	- 18.950	- 0.966	-35 644 126	- 44.126	- 1.751	42 6259		33 1814	
		-154.100.000			-35.600.000					
							121 2648	117 2659	33 1814	39 1805
							3.9991	1/2 = 1.9995	0.6048	3.9991

面積計算書

区

ブロック

64

計算者

精算者

備考

742-1
742-2

731-2

点	① X	② X-(定数)	③ X _{n,1} -X _{n,1}	④ Y	⑤ Y-(定数)	⑥ Y _{n,1} -Y _{n,1}	③ +	⑤ -	② +	⑥ -
		-54,000,000			-25,600,000					
2	-154,078,091	-78,091	-33,573	-35,760,607	-160,607	-26,238	4720,5988		20,489,516	
30	-154,59,170	-59,170	-4,266	-35,706,291	-106,291	-42,396	4,534,374		25,085,913	
27	-154,073,825	-73,825	+33,573	-35,698,211	-98,211	+26,238		3299,2379		1939,0203
3	-154,092,743	-92,743	+4,266	-35,732,529	-132,529	+42,396		563,3689		3931,9322
							5174,0362	3862,6066	455,75229	5868,9525
							1311,4296	1/2 = 655,7148		1311,4296
								198,3537		
		-25,000,000			-25,600,000					
3	-154,092,743	-92,743	-34,974	-35,732,529	-132,529	-25,465	4635,0692		2361,7004	
27	-154,073,825	-73,825	-2,868	-35,698,211	-98,211	-42,162	281,6691		3186,8037	
29	-154,089,875	-89,875	+34,974	-35,689,362	-89,362	+25,465		3125,3465		2288,6668
4	-154,108,799	-108,799	+2,868	-35,723,676	-123,676	+42,167		354,7027		696,5269
							7679,2647	3480,0492	3348,5041	6985,1932
							4916,7383			
							1436,6891	1/2 = 718,3445		1436,6891
								217,2992		

面積計算書

工区

ブロック

64

計算者

精算者

備考

点	①	②	③	④	⑤	⑥	③	×	⑤	②	×	⑥
	X	X - (定数)	$X_{n+1} - X_n$	Y	Y - (定数)	$Y_{n+1} - Y_n$	+		-	+		-
		154.000.000			15.600.000							
70	-154 032 690	- 72.690	+ 0.985	-35 491 698	- 71.698	- 2.717			71 9829	88.8187		
13	-154 034 447	- 34.447	+ 0.966	-35 690 732	- 90.732	+ 1.951			89 6474			60 3061
15	-154 033 656	- 33.656	- 1.951	-35 693 429	- 93.429	+ 0.966	163 6291					32 5116
							163.6291	159.6300	78.8187	92.7179		
							3.9991	1/2 = 1.9995				3.9990
									0.6048			

面積計算書

工区

ブロック

64

計算者

精算者

備考

326
329

点	①	②	③	④	⑤	⑥	③ × ⑤		② × ⑥	
	X	X - (定数)	X _{n-1} - X _n	Y	Y - (定数)	Y _{n-1} - Y _n	+	-	+	-
		154,000,000			35,700,000					
19	-154,051,574	- 51,574	- 16,887	-35,723,456	- 23,456	+ 0,315	396,1014			16,2458
20	-154,067,771	- 47,771	+ 9,282	-35,716,559	+ 16,559	- 14,107		153,7006	673,9054	
24	-154,060,856	- 60,856	+ 16,887	-35,709,349	+ 9,349	- 0,315		157,8765	19,1696	
23	-154,064,658	- 64,658	- 9,282	-35,716,242	- 16,242	+ 14,107	150,9768			912,1304
							546,8782	311,5791	673,0750	28,3762
							235,3011	1/2 = 117,6505		235,3012
							35,5892	↓		

326-2

		154,000,000			35,600,000					
20	-154,067,771	- 47,771	- 22,130	-35,716,559	- 116,559	- 9,190	2579,4506		439,0154	
21	-154,038,726	- 38,726	+ 4,041	-35,700,159	+ 100,159	- 23,613	4,047,425	914,4390		
25	-154,051,812	- 51,812	+ 22,130	-35,692,946	- 12,946	+ 9,190	2,056,8949		496,1522	
24	-154,060,856	- 60,856	- 4,041	-35,709,349	- 109,349	+ 23,613	441,8793		1436,9929	
							3021,3299	2461,6374	13,53,4524	1913,1449
							359,6925	1/2 = 279,8462		559,6925
							84,6534			

面積計算書

区
 ブロック
 64
 計算者
 精算者
 備考

732A

点	①	②	③	④	⑤	⑥	③ × ⑤		② × ⑥	
	X	X-(定数)	X _{n-1} -X _n	Y	Y-(定数)	Y _{n-1} -Y _n	+	-	+	-
		-154.000.000			-15.600.000					
4	-154 103 799	- 10 8.799	- 60.365	-35 723 676	- 122.676	- 11.466	7765 7019		12.47	4873
29	-154 029 895	- 29.895	+ 24.259	-35 689 362	- 89.362	- 58.122		2169 8329	5 223.8096	
7	-154 123 058	- 123.058	+ 61.150	-35 665 553	- 65.553	+ 8.749		4 008 5659		1164 1294
6	-154 151 025	- 151.025	+ 17.122	-35 698 111	- 98.111	+ 35.275		16 85 7432		15329 4068
5	-154 150 240	- 150.240	- 42.226	-35 700 828	- 150.828	+ 25.565	4237.5631			3 870.8956
							1172326488	1862 1418	6471 2939	10332.4168
							386/384	1230 1/2	<u>1930.5615</u>	386/1229
								583,9948		
		-154.000.000			-15.600.000					
16	-154 062 993	- 62.993	- 30.967	-35 746 647	- 146.647	- 53.670	4541 2176		3380.8343	
15	-154 023 656	- 23.656	- 28.866	-35 693 449	- 93.449	- 54.828	2699 4988		7845.2911	
14	-154 034 127	- 34.127	+ 30.967	-35 691 819	- 91.819	+ 53.670		2843 3589		1831 5960
17	-154 064 623	- 64.623	+ 28.866	-35 747 119	- 147.119	+ 54.828	4246.7370			3543 1498
							7 238 71647	0 90 0939	5 226.1254	5 374.7458
							148.6205 1/2	<u>74.3102</u>		148.6204
								22.4788		

面積計算書

ブロック 64 計算者 精算者 備考

740

733-1

点	①	②	③	④	⑤	⑥	③ × ⑤		② × ⑥		
	X	X - (定数)	X _{n-1} - X _n	Y	Y - (定数)	Y _{n-1} - Y _n	+	-	+	-	
		154.000.000			25.600.000						
26	154 067 163	67.163	- 22.074	25 701 884	101.884	- 10.962	33 69.7114		736 2908		
11	154 054 794	54.794	+ 8.325	25 679 507	79.507	- 33.789		661 8959	1851 4349		
10	154 075 408	75.408	+ 33.074	25 668 095	68.095	+ 10.962		2252 1940		829 4994	
20	154 087 868	87.868	- 8.325	25 690 469	90.469	+ 33.789	753.1544			2968 9918	
							412286.58	6914.06	972589	6752	3996.4712
							1208.7961	1/2 = 604.3980			1208.7960
							82.8303				
		154.000.000			25.600.000						
28	154 087 868	87.868	- 57.570	25 690 469	90.469	+ 2.542	5208.3003			223 3604	
10	154 075 408	75.408	+ 21.082	25 668 095	68.095	- 46.343		2116 5287	3498 3403		
9	154 118 950	118.950	+ 46.179	25 644 126	44.126	- 23.184		2037 6945	2757 7368		
8	154 121 667	121.667	+ 14.108	25 644 911	44.911	+ 21.427		633 6073		2606 9588	
7	154 133 058	133.058	- 33.799	25 665 553	65.553	+ 45.558	2215 6258			4061 8563	
							7423 9261	4787.8275	6256.9771	8892.1958	
				365.7208	987		2636.0986	1/2 = 1318.0493		2636.0984	
				1318.0493	165.2805	904.0480					
						238.0820					

733~2 の面積を/2
733~3

398.7099

