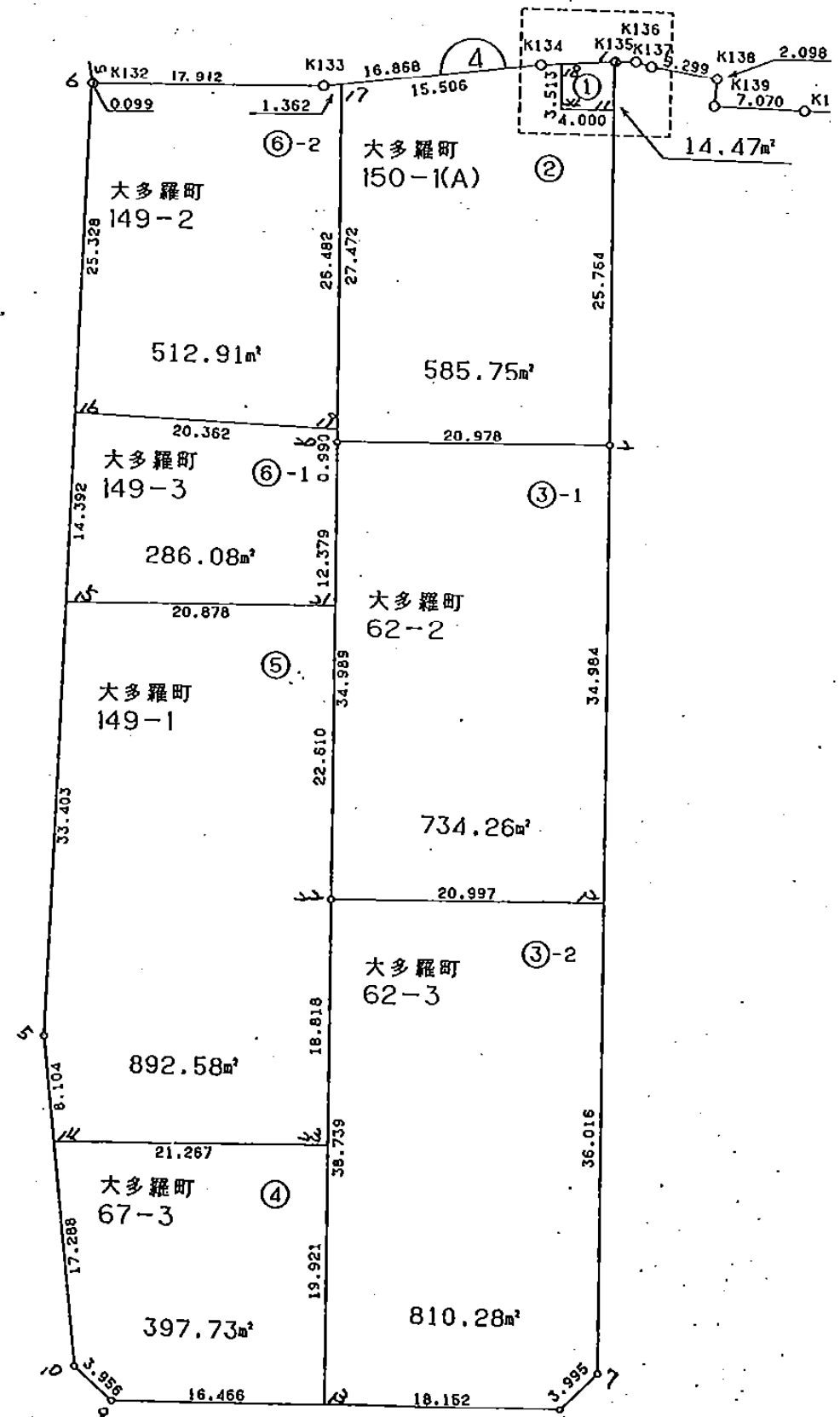
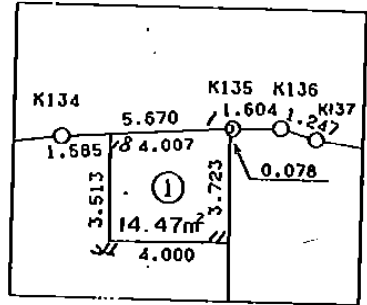


大多羅町
150



* * * * * 各 筆 面 積 計 算 書 * * * * *

4 BLOCK

点 名	X	Y	(X-X0)*(YN-1-Y0)	(XN-1-X0)*(Y-Y0)
X0·Y0	- 148400.000	- 29600.000		
4-1	- 148492.367	- 29696.769		
4-2	- 148521.851	- 29696.324	+ 11791.399419	+ 8897.158908
4-7	- 148592.842	- 29695.232	+ 18575.312808	+ 11604.114432
4-8	- 148595.701	- 29698.023	+ 18636.997632	+ 18902.951366
4-9	- 148596.069	- 29732.639	+ 19219.271587	+ 25957.584939
4-10	- 148593.470	- 29735.622	+ 25661.667330	+ 26591.269918
4-5	- 148568.271	- 29738.748	+ 22821.249562	+ 26843.575560
4-6	- 148495.167	- 29737.089	+ 13204.230916	+ 23068.103119
K132	- 148495.164	- 29736.990	+ 13045.937596	+ 13036.927330
K133	- 148494.878	- 29719.080	+ 12997.337220	+ 11332.129120
K134	- 148492.744	- 29702.348	+ 11043.955520	+ 9710.573544
4-1	- 148492.367	- 29696.769	+ 9453.577716	+ 8974.744136
			+176450.937306	+184919.132372
		倍面積	= 8468.195066	
		面積	= 4234.097533	

1 LOT

点 名	X	Y	(X-X0)*(YN-1-Y0)	(XN-1-X0)*(Y-Y0)
X0·Y0	- 148400.000	- 29600.000		
4-1	- 148492.367	- 29696.769		
4-11	- 148496.090	- 29696.713	+ 9298.533210	+ 8933.089671
4-24	- 148496.150	- 29700.713	+ 9298.954950	+ 9677.512170
4-18	- 148492.637	- 29700.767	+ 9329.750181	+ 9688.747050
4-1	- 148492.367	- 29696.769	+ 9307.545489	+ 8964.389853
			+ 37234.783830	+ 37263.738744
		倍面積	= 28.954914	
		面積	= 14.477457	

2 LOT

点 名	X	Y	(X-X0)*(YN-1-Y0)	(XN-1-X0)*(Y-Y0)
X0·Y0	- 148400.000	- 29600.000		
4-11	- 148496.090	- 29696.713		
4-2	- 148521.851	- 29696.324	+ 11784.575763	+ 9255.773160
4-20	- 148522.175	- 29717.299	+ 11768.384700	+ 14293.000449
4-17	- 148494.706	- 29717.729	+ 11108.919094	+ 14383.540575
K134	- 148492.744	- 29702.348	+ 10918.658376	+ 9692.969688
4-18	- 148492.637	- 29700.767	+ 9481.211676	+ 9345.534648
4-24	- 148496.150	- 29700.713	+ 9688.747050	+ 9329.750181
4-11	- 148496.090	- 29696.713	+ 9677.512170	+ 9298.954950
			+ 74428.008829	+ 75599.523651
		倍面積	= 1171.514822	
		面積	= 585.757411	

* * * * * 各 筆 面 積 計 算 書 * * * * *

3-1 LOT

点 名	X	Y	(X-X0)*(YN-1-Y0)	(XN-1-X0)*(Y-Y0)
X0·Y0	- 148500.000	- 29600.000		
4-2	- 148521.851	- 29696.324		
4-12	- 148556.831	- 29695.786	+ 5474.189244	+ 2093.019886
4-22	- 148557.160	- 29716.780	+ 5475.127760	+ 6636.724180
4-20	- 148522.175	- 29717.299	+ 2589.596500	+ 6704.810840
4-2	- 148521.851	- 29696.324	+ 2563.100449	+ 2135.984700
			+ 16102.013953	+ 17570.539606
		倍面積	= 1468.525653	
		面積	= 734.262826	

3-2 LOT

点 名	X	Y	(X-X0)*(YN-1-Y0)	(XN-1-X0)*(Y-Y0)
X0·Y0	- 148500.000	- 29600.000		
4-12	- 148556.831	- 29695.786		
4-7	- 148592.842	- 29695.232	+ 8892.963812	+ 5412.129792
4-8	- 148595.701	- 29698.023	+ 9113.797632	+ 9100.651366
4-13	- 148595.894	- 29716.174	+ 9399.817562	+ 11117.967974
4-22	- 148557.160	- 29716.780	+ 6640.505840	+ 11198.501320
4-12	- 148556.831	- 29695.786	+ 6636.724180	+ 5475.127760
			+ 40683.809026	+ 42304.378212
		倍面積	= 1620.569186	
		面積	= 810.284593	

4 LOT

点 名	X	Y	(X-X0)*(YN-1-Y0)	(XN-1-X0)*(Y-Y0)
X0·Y0	- 148500.000	- 29700.000		
4-13	- 148595.894	- 29716.174		
4-9	- 148596.069	- 29732.639	+ 1553.820006	+ 3129.884266
4-10	- 148593.470	- 29735.622	+ 3050.767330	+ 3422.169918
4-14	- 148576.313	- 29737.750	+ 2718.421686	+ 3528.492500
4-23	- 148575.976	- 29716.486	+ 2868.094000	+ 1258.096118
4-13	- 148595.894	- 29716.174	+ 1580.908484	+ 1228.835824
			+ 11772.011506	+ 12567.478626
		倍面積	= 795.467120	
		面積	= 397.733560	

5 LOT

点 名	X	Y	(X-X0)*(YN-1-Y0)	(XN-1-X0)*(Y-Y0)
X0·Y0	- 148500.000	- 29700.000		
4-14	- 148576.313	- 29737.750		
4-5	- 148568.271	- 29738.748	+ 2577.230250	+ 2956.976124

* * * * * 各 筆 面 積 計 算 書 * * * * *

点 名	X	Y	(X-X0)*(YN-1-Y0)	(XN-1-X0)*(Y-Y0)
4-15	- 148534.877	- 29737.990	+ 1351.413996	+ 2593.615290
4-21	- 148534.553	- 29717.115	+ 1312.668470	+ 596.919855
4-22	- 148557.160	- 29716.780	+ 978.293400	+ 579.799340
4-23	- 148575.976	- 29716.486	+ 1274.877280	+ 942.339760
4-14	- 148576.313	- 29737.750	+ 1258.096118	+ 2868.094000
			+ 8752.579514	+ 10537.744369
		倍面積	= 1785.164855	
		面積	= 892.582427	

6-1 LOT

点 名	X	Y	(X-X0)*(YN-1-Y0)	(XN-1-X0)*(Y-Y0)
X0-Y0	- 148500.000	- 29700.000		
4-15	- 148534.877	- 29737.990		
4-16	- 148520.488	- 29737.664	+ 778.339120	+ 1313.607328
4-19	- 148521.185	- 29717.314	+ 797.911840	+ 354.729232
4-20	- 148522.175	- 29717.299	+ 383.937950	+ 366.479315
4-21	- 148534.553	- 29717.115	+ 597.732347	+ 379.525125
4-15	- 148534.877	- 29737.990	+ 596.919855	+ 1312.668470
			+ 3154.841112	+ 3727.009470
		倍面積	= 572.168358	
		面積	= 286.084179	

6-2 LOT

点 名	X	Y	(X-X0)*(YN-1-Y0)	(XN-1-X0)*(Y-Y0)
X0-Y0	- 148400.000	- 29700.000		
4-16	- 148520.488	- 29737.664		
4-6	- 148495.167	- 29737.089	+ 3584.369888	+ 4468.779432
K132	- 148495.164	- 29736.990	+ 3529.537596	+ 3520.227330
K133	- 148494.878	- 29719.080	+ 3509.537220	+ 1815.729120
4-17	- 148494.706	- 29717.729	+ 1806.990480	+ 1682.092062
4-19	- 148521.185	- 29717.314	+ 2148.488865	+ 1639.739684
4-16	- 148520.488	- 29737.664	+ 2086.129232	+ 4564.311840
			+ 16665.053281	+ 17690.879468
		倍面積	= 1025.826187	
		面積	= 512.913093	

3 スキリ

点 名	X	Y	(X-X0)*(YN-1-Y0)	(XN-1-X0)*(Y-Y0)
X0-Y0	- 148500.000	- 29600.000		
4-3	- 148595.671	- 29695.189		
4-7	- 148592.842	- 29695.232	+ 8837.537138	+ 9110.940672
4-8	- 148595.701	- 29698.023	+ 9113.797632	+ 9100.651366

* * * * * 各 筆 面 積 計 算 書 * * * * *

点 名	X	Y	(X-X0)*(YN-1-Y0)	(XN-1-X0)*(Y-Y0)
4-3	- 148595.671	- 29695.189	+ 9377.958433	+ 9109.682489
			+ 27329.293203	+ 27321.274527
		倍面積	= 8.018676	
		面積	= 4.009338	

4 区

点 名	X	Y	(X-X0)*(YN-1-Y0)	(XN-1-X0)*(Y-Y0)
X0-Y0	- 148500.000	- 29700.000		
4-4	- 148596.097	- 29735.296		
4-9	- 148596.069	- 29732.639	+ 3390.851424	+ 3136.509983
4-10	- 148593.470	- 29735.622	+ 3050.767330	+ 3422.169918
4-4	- 148596.097	- 29735.296	+ 3423.167334	+ 3299.117120
			+ 9864.786088	+ 9857.797021
		倍面積	= 6.989067	
		面積	= 3.494533	

* * * 各筆面積 集計表 * * *

街区名・筆名	各筆面積	隅切面積
4 BLOCK	4234.09	
1 LOT	14.47	
2 LOT	585.75	
3-1 LOT	734.26	
3-2 LOT	810.28	
4 LOT	397.73	
5 LOT	892.58	
6-1 LOT	286.08	
6-2 LOT	512.91	
3 ｽﾏｷﾘ		4.00
4 ｽﾏｷﾘ		3.49
合計 =	4234.06	7.49