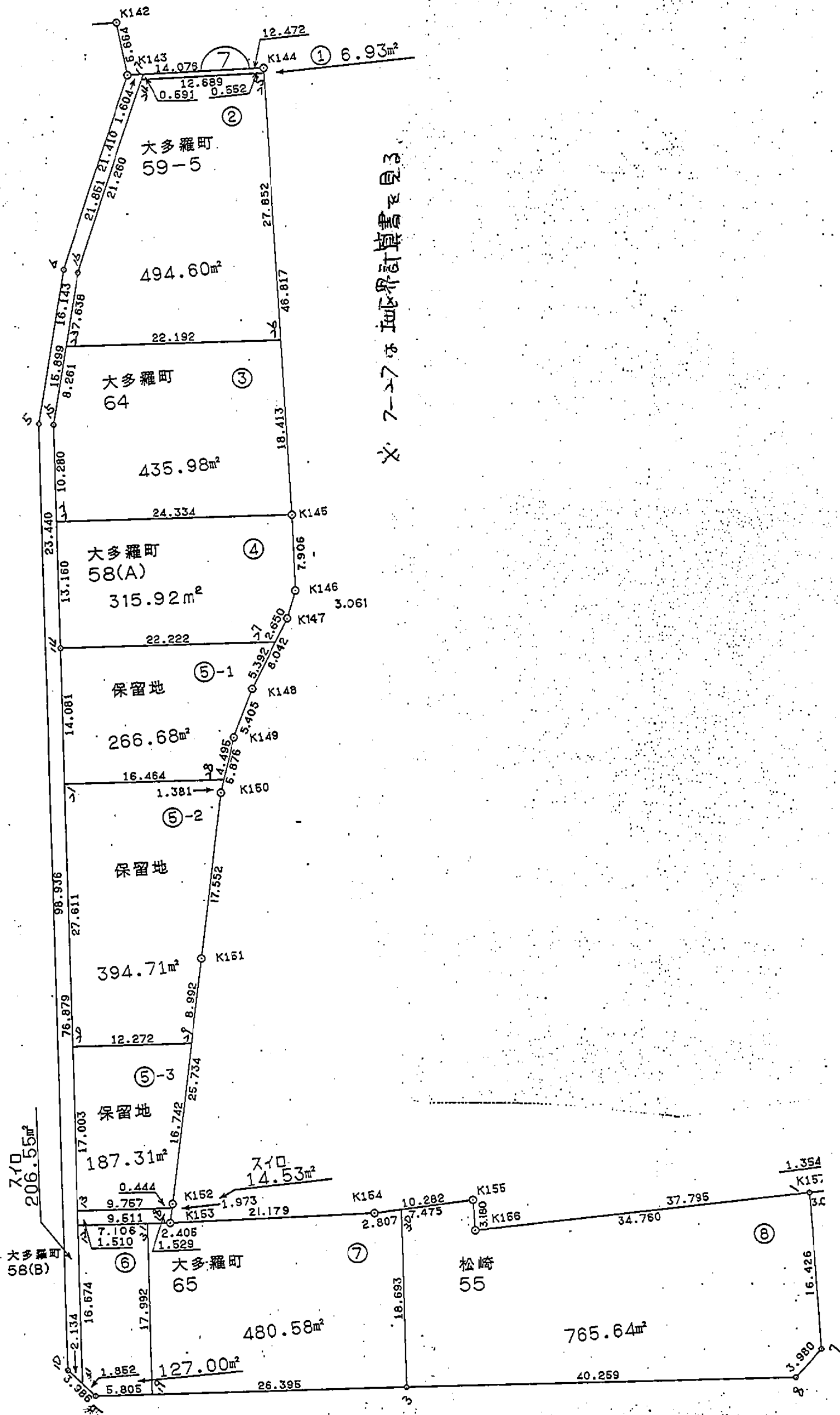


大多羅町
66-1(B)



* * * * * 各 筆 面 積 計 算 書 * * * * *

7 BLOCK

点 名	X	Y	(X-X0)*(YN-1-Y0)	(XN-1-X0)*(Y-Y0)
X0·Y0	- 148500.000	- 29500.000		
7-1	- 148625.638	- 29573.099		
7-7	- 148642.056	- 29573.636	+ 10384.151544	+ 9251.479768
7-8	- 148644.706	- 29576.605	+ 10655.571016	+ 10882.199880
7-3	- 148641.350	- 29616.724	+ 10828.116750	+ 16890.663144
7-9	- 148638.730	- 29648.817	+ 16193.120520	+ 21035.282950
7-10	- 148635.672	- 29651.374	+ 20190.300024	+ 21000.115020
7-5	- 148537.072	- 29643.224	+ 5611.736928	+ 19431.486528
7-6	- 148521.520	- 29638.897	+ 3082.180480	+ 5149.189584
K143	- 148502.025	- 29630.046	+ 281.266425	+ 2798.589920
K144	- 148502.832	- 29615.993	+ 368.290272	+ 234.885825
K145	- 148549.591	- 29618.327	+ 5752.208863	+ 335.102064
K146	- 148557.479	- 29618.861	+ 6801.317633	+ 5894.435851
K147	- 148560.290	- 29620.073	+ 7166.129690	+ 6901.675967
K148	- 148567.046	- 29624.435	+ 8050.414358	+ 7502.186150
K149	- 148571.854	- 29626.905	+ 8941.152490	+ 8508.472630
K150	- 148577.390	- 29628.876	+ 9821.177950	+ 9260.256104
K151	- 148594.492	- 29632.825	+ 12177.750992	+ 10279.326750
K152	- 148619.553	- 29638.671	+ 15879.627225	+ 13103.300132
K153	- 148621.467	- 29639.149	+ 16843.950357	+ 16635.680397
K154	- 148622.781	- 29618.011	+ 17084.853369	+ 14334.442137
K155	- 148622.555	- 29607.731	+ 14462.838105	+ 13227.319911
K156	- 148625.732	- 29607.859	+ 13545.234092	+ 13218.659745
7-1	- 148625.638	- 29573.099	+ 13551.189042	+ 9190.883468
			+227672.578125	+235065.633925
		倍面積	= 7393.055800	
		面積	= 3696.527900	

1 LOT

点 名	X	Y	(X-X0)*(YN-1-Y0)	(XN-1-X0)*(Y-Y0)
X0·Y0	- 148500.000	- 29600.000		
7-17	- 148502.117	- 29628.445		
K144	- 148502.832	- 29615.993	+ 80.556240	+ 33.857181
7-25	- 148503.383	- 29616.021	+ 54.104319	+ 45.371472
7-24	- 148502.655	- 29628.689	+ 42.535755	+ 97.054887
7-17	- 148502.117	- 29628.445	+ 60.734613	+ 75.521475
			+ 237.930927	+ 251.805015
		倍面積	= 13.874088	
		面積	= 6.937044	

2 LOT

点 名	X	Y	(X-X0)*(YN-1-Y0)	(XN-1-X0)*(Y-Y0)
X0·Y0	- 148500.000	- 29600.000		
7-23	- 148529.372	- 29639.525		
7-16	- 148522.013	- 29637.480	+ 870.063825	+ 1100.862560

* * * * * 各 筆 面 積 計 算 書 * * * * *

点 名	X	Y	(X-XD)*(YN-1-YD)	(XN-1-XD)*(Y-YD)
7-24	- 148502.655	- 29628.689	+ 99.509400	+ 631.530957
7-25	- 148503.383	- 29616.021	+ 97.054887	+ 42.535755
7-26	- 148531.201	- 29617.409	+ 499.871221	+ 58.894647
7-23	- 148529.372	- 29639.525	+ 511.337148	+ 1233.219525
			+ 2077.836481	+ 3067.043444
		倍面積	= 989.206963	
		面積	= 494.603481	

3 LOT

点 名	X	Y	(X-XD)*(YN-1-YD)	(XN-1-XD)*(Y-YD)
XD·YD	- 148500.000	- 29600.000		
7-22	- 148547.577	- 29642.578		
7-15	- 148537.332	- 29641.736	+ 1589.521896	+ 1985.673672
7-23	- 148529.372	- 29639.525	+ 1225.869792	+ 1475.547300
7-26	- 148531.201	- 29617.409	+ 1233.219525	+ 511.337148
K145	- 148549.591	- 29618.327	+ 863.329719	+ 571.820727
7-22	- 148547.577	- 29642.578	+ 871.943679	+ 2111.485598
			+ 5783.884611	+ 6655.864445
		倍面積	= 871.979834	
		面積	= 435.989917	

4 LOT

点 名	X	Y	(X-XD)*(YN-1-YD)	(XN-1-XD)*(Y-YD)
XD·YD	- 148500.000	- 29600.000		
7-14	- 148560.693	- 29643.657		
7-22	- 148547.577	- 29642.578	+ 2077.069089	+ 2584.186554
K145	- 148549.591	- 29618.327	+ 2111.485598	+ 871.943679
K146	- 148557.479	- 29618.861	+ 1053.417633	+ 935.335851
K147	- 148560.290	- 29620.073	+ 1137.129690	+ 1153.775967
7-27	- 148562.516	- 29621.510	+ 1254.883668	+ 1296.837900
7-14	- 148560.693	- 29643.657	+ 1305.506430	+ 2729.261012
			+ 8939.492108	+ 9571.340963
		倍面積	= 631.848855	
		面積	= 315.924427	

5-1LOT

点 名	X	Y	(X-XD)*(YN-1-YD)	(XN-1-XD)*(Y-YD)
XD·YD	- 148500.000	- 29600.000		
7-21	- 148574.726	- 29644.820		
7-14	- 148560.693	- 29643.657	+ 2720.260260	+ 3262.312982
7-27	- 148562.516	- 29621.510	+ 2729.261012	+ 1305.506430
K148	- 148567.046	- 29624.435	+ 1442.159460	+ 1527.578460

* * * * * 各 筆 面 積 計 算 書 * * * * *

点 名	X	Y	(X-XD)*(YN-1-YD)	(XN-1-XD)*(Y-YD)
K149	- 148571.854	- 29626.905	+ 1755.752490	+ 1803.872630
7-28	- 148576.089	- 29628.413	+ 2047.174545	+ 2041.587702
7-21	- 148574.726	- 29644.820	+ 2123.189838	+ 3410.308980
			+ 12817.797605	+ 13351.167184
		倍面積	= 533.369579	
		面積	= 266.684789	

5-2 LOT

点 名	X	Y	(X-XD)*(YN-1-YD)	(XN-1-XD)*(Y-YD)
XD·YD	- 148500.000	- 29600.000		
7-20	- 148602.242	- 29647.099		
7-21	- 148574.726	- 29644.820	+ 3519.519874	+ 4582.486440
7-28	- 148576.089	- 29628.413	+ 3410.308980	+ 2123.189838
K150	- 148577.390	- 29628.876	+ 2198.882070	+ 2197.145964
K151	- 148594.492	- 29632.825	+ 2728.550992	+ 2540.326750
7-29	- 148603.249	- 29634.868	+ 3389.148425	+ 3294.747056
7-20	- 148602.242	- 29647.099	+ 3564.974056	+ 4862.924651
			+ 18811.384397	+ 19600.820699
		倍面積	= 789.436302	
		面積	= 394.718151	

5-3 LOT

点 名	X	Y	(X-XD)*(YN-1-YD)	(XN-1-XD)*(Y-YD)
XD·YD	- 148600.000	- 29600.000		
7-13	- 148619.187	- 29648.503		
7-20	- 148602.242	- 29647.099	+ 108.743726	+ 903.688513
7-29	- 148603.249	- 29634.868	+ 153.024651	+ 78.174056
K152	- 148619.553	- 29638.671	+ 681.774004	+ 125.642079
7-18	- 148619.984	- 29638.779	+ 772.801264	+ 758.245787
7-13	- 148619.187	- 29648.503	+ 744.052673	+ 969.283952
			+ 2460.396318	+ 2835.034387
		倍面積	= 374.638069	
		面積	= 187.319034	

6 LOT

点 名	X	Y	(X-XD)*(YN-1-YD)	(XN-1-XD)*(Y-YD)
XD·YD	- 148600.000	- 29600.000		
7-19	- 148639.202	- 29643.031		
7-9	- 148638.730	- 29648.817	+ 1666.590630	+ 1913.724034
7-11	- 148637.309	- 29650.005	+ 1821.313453	+ 1936.693650
7-12	- 148620.692	- 29648.628	+ 1034.703460	+ 1814.262052
7-31	- 148621.271	- 29641.546	+ 1034.366188	+ 859.669832

* * * * * 各 筆 面 積 計 算 書 * * * * *

点 名	X	Y	(X-X0)*(YN-1-Y0)	(XN-1-X0)*(Y-Y0)
7-19	- 148639.202	- 29643.031	+ 1628.686292	+ 915.312401
			+ 7185.660023	+ 7439.661969
		倍面積	= 254.001946	
		面積	= 127.000973	

7 LOT

点 名	X	Y	(X-X0)*(YN-1-Y0)	(XN-1-X0)*(Y-Y0)
X0·Y0	- 148600.000	- 29600.000		
7-3	- 148641.350	- 29616.724		
7-19	- 148639.202	- 29643.031	+ 655.614248	+ 1779.331850
7-31	- 148621.271	- 29641.546	+ 915.312401	+ 1628.686292
K153	- 148621.467	- 29639.149	+ 891.867982	+ 832.738379
K154	- 148622.781	- 29618.011	+ 891.853369	+ 386.642137
7-30	- 148622.719	- 29615.205	+ 409.191909	+ 346.385105
7-3	- 148641.350	- 29616.724	+ 628.726750	+ 379.952556
			+ 4392.566659	+ 5353.736319
		倍面積	= 961.169660	
		面積	= 480.584830	

8 LOT

点 名	X	Y	(X-X0)*(YN-1-Y0)	(XN-1-X0)*(Y-Y0)
X0·Y0	- 148600.000	- 29500.000		
7-1	- 148625.638	- 29573.099		
7-7	- 148642.056	- 29573.636	+ 3074.251544	+ 1887.879768
7-8	- 148644.706	- 29576.605	+ 3291.971016	+ 3221.699880
7-3	- 148641.350	- 29616.724	+ 3167.616750	+ 5218.263144
7-30	- 148622.719	- 29615.205	+ 2651.852556	+ 4763.726750
K155	- 148622.555	- 29607.731	+ 2598.448775	+ 2447.540589
K156	- 148625.732	- 29607.859	+ 2772.134092	+ 2432.759745
7-1	- 148625.638	- 29573.099	+ 2765.289042	+ 1880.983468
			+ 20321.563775	+ 21852.853344
		倍面積	= 1531.289569	
		面積	= 765.644784	

710 1

点 名	X	Y	(X-X0)*(YN-1-Y0)	(XN-1-X0)*(Y-Y0)
X0·Y0	- 148500.000	- 29600.000		
7-11	- 148637.309	- 29650.005		
7-10	- 148635.672	- 29651.374	+ 6784.278360	+ 7054.112566
7-5	- 148537.072	- 29643.224	+ 1904.536928	+ 5864.286528
7-6	- 148521.520	- 29638.897	+ 930.180480	+ 1441.989584
K143	- 148502.025	- 29630.046	+ 78.766425	+ 646.589920

* * * * * 各 筆 面 積 計 算 書 * * * * *

点 名	X	Y	(X-XD)*(YN-1-YD)	(XN-1-XD)*(Y-YD)
7-17	- 148502.117	- 29628.445	+ 63.607382	+ 57.601125
7-16	- 148522.013	- 29637.480	+ 626.159785	+ 79.345160
7-15	- 148537.332	- 29641.736	+ 1399.203360	+ 918.734568
7-14	- 148560.693	- 29643.657	+ 2533.083048	+ 1629.803124
7-11	- 148637.309	- 29650.005	+ 5994.499013	+ 3034.953465
			+ 20314.314781	+ 20727.416040
		倍面積	= 413.101259	
		面積	= 206.550629	

2 区

点 名	X	Y	(X-XD)*(YN-1-YD)	(XN-1-XD)*(Y-YD)
XD・YD	- 148600.000	- 29600.000		
7-12	- 148620.692	- 29648.628		
7-13	- 148619.187	- 29648.503	+ 933.025436	+ 1003.624076
7-18	- 148619.984	- 29638.779	+ 969.283952	+ 744.052673
K153	- 148621.467	- 29639.149	+ 832.468793	+ 782.353616
7-12	- 148620.692	- 29648.628	+ 810.071108	+ 1043.897276
			+ 3544.849289	+ 3573.927641
		倍面積	= 29.078352	
		面積	= 14.539176	

2 区

点 名	X	Y	(X-XD)*(YN-1-YD)	(XN-1-XD)*(Y-YD)
XD・YD	- 148600.000	- 29500.000		
7-2	- 148644.946	- 29573.731		
7-7	- 148642.056	- 29573.636	+ 3100.830936	+ 3309.643656
7-8	- 148644.706	- 29576.605	+ 3291.971016	+ 3221.699880
7-2	- 148644.946	- 29573.731	+ 3443.088330	+ 3296.218086
			+ 9835.890282	+ 9827.561622
		倍面積	= 8.328660	
		面積	= 4.164330	

4 区

点 名	X	Y	(X-XD)*(YN-1-YD)	(XN-1-XD)*(Y-YD)
XD・YD	- 148600.000	- 29600.000		
7-4	- 148638.502	- 29651.608		
7-9	- 148638.730	- 29648.817	+ 1998.777840	+ 1879.552134
7-10	- 148635.672	- 29651.374	+ 1741.400024	+ 1989.715020
7-4	- 148638.502	- 29651.608	+ 1978.001748	+ 1840.960576
			+ 5718.179612	+ 5710.227730
		倍面積	= 7.951882	
		面積	= 3.975941	

* * * 各筆面積 集計表 * * *

街区名・筆名	各筆面積	開切面積
7 BLOCK	3696.52	
1 LOT	6.93	
2 LOT	494.60	
3 LOT	435.98	
4 LOT	315.92	
5-1LOT	266.68	
5-2 LOT	394.71	
5-3 LOT	187.31	
6 LOT	127.00	
7 LOT	480.58	
8 LOT	765.64	
スロ 1	206.55	
スロ 2	14.53	
2 スミキリ		4.16
4 スミキリ		3.97
合計 =	3696.43	8.13