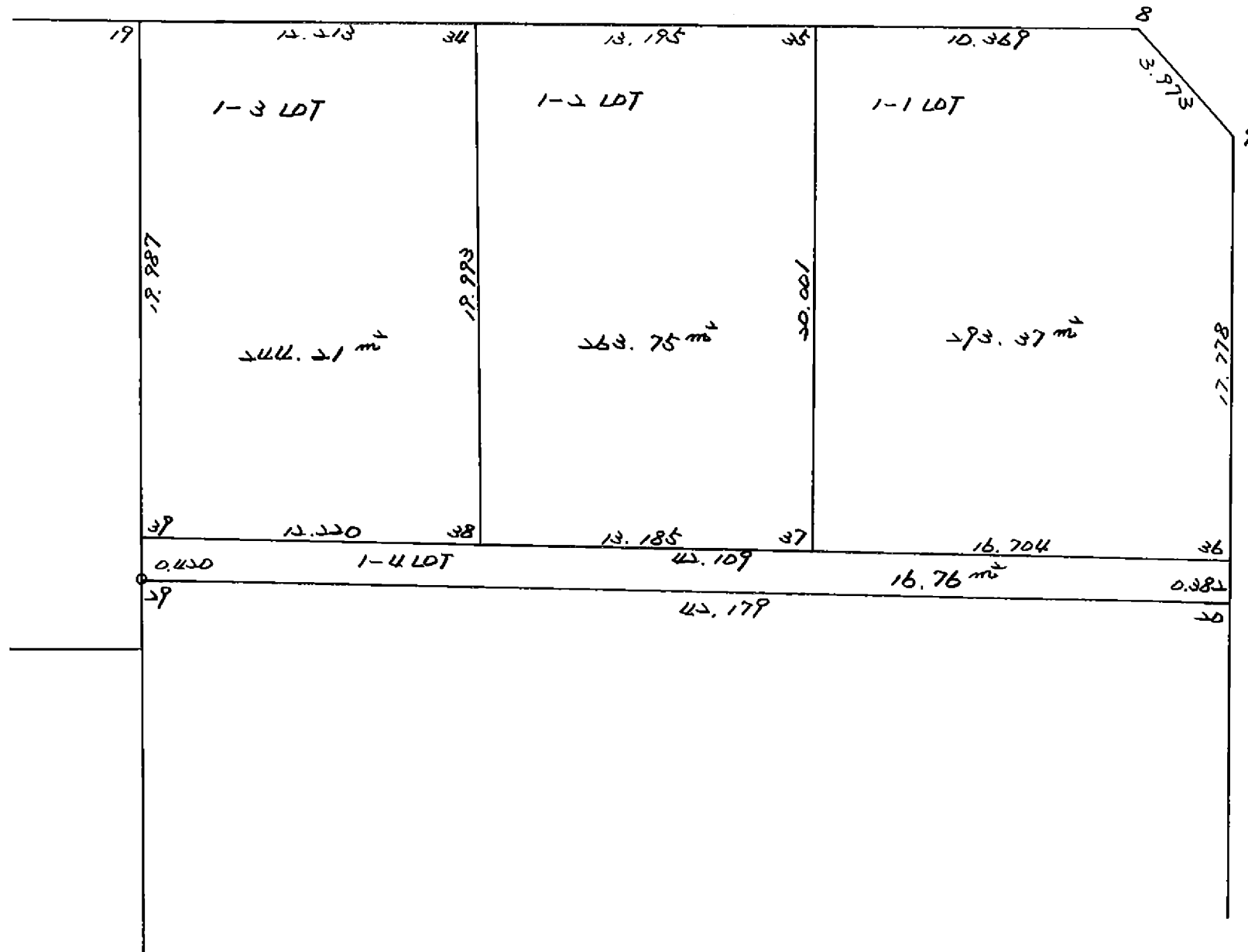




23 BL

H5, 4.7



\* \* \* \* 1-1 LOT

面積計算書

\* \* \* \* NO 1

点名	X	DX	DMD.1	Y	DY	DMD.2	DX * DMD.2	DY * DMD.1
23-35	- 148869.533			- 29262.080				
23-8	- 148869.469	- 0.064	- 0.064	- 29251.711	- 10.369	- 10.369	+ 0.663616	+ 0.663616
23-9	- 148871.986	+ 2.517	+ 2.389	- 29248.637	- 3.074	- 23.812	- 59.934804	- 7.343786
23-36	- 148889.439	+ 17.453	+ 22.359	- 29245.256	- 3.381	- 30.267	- 528.249951	- 75.595779
23-37	- 148889.534	+ 0.095	+ 39.907	- 29261.960	+ 16.704	- 16.944	+ 1.609680	+ 666.606528
23-35	- 148869.533	- 20.001	+ 20.001	- 29262.080	+ 0.120	- 0.120	+ 2.400120	+ 2.400120
		+ 20.065			+ 16.824		+ 3.063736	+ 669.670264
		- 20.065			- 16.824		- 589.794435	- 82.939565
							- 586.730699	+ 586.730699
						面積 =	<del>293.365349</del>	293.37

\* \* \* \* 1-2 LOT

## 面 積 計 算 書

\* \* \* \* NO 1

点 名	X	DX	DMD.1	Y	DY	DMD.2	DX * DMD.2	DY * DMD.1
23-34	- 148869.616			- 29275.274				
23-35	- 148869.533	- 0.083	- 0.083	- 29262.080	- 13.194	- 13.194	+ 1.095102	+ 1.095102
23-37	- 148889.534	+ 20.001	+ 19.835	- 29261.960	- 0.120	- 26.508	- 530.186508	- 2.380200
23-38	- 148889.609	+ 0.075	+ 39.911	- 29275.144	+ 13.184	- 13.444	- 1.008300	+ 526.186624
23-34	- 148869.616	- 19.993	+ 19.993	- 29275.274	+ 0.130	- 0.130	+ 2.599090	+ 2.599090
		+ 20.076			+ 13.314		+ 3.694192	+ 529.880816
		- 20.076			- 13.314		- 531.194808	- 2.380200
							- 527.500616	+ 527.500616
						面 積 =	263.750308	

\* \* \* \* 1-3 LOT

面積計算書

\* \* \* \* NO 1

点名	X	DX	DMD.1	Y	DY	DMD.2	DX * DMD.2	DY * DMD.1
23-19	- 148869.692			- 29287.487				
23-34	- 148869.616	- 0.076	- 0.076	- 29275.274	- 12.213	- 12.213	+ 0.928188	+ 0.928188
23-38	- 148889.609	+ 19.993	+ 19.841	- 29275.144	- 0.130	- 24.556	- 490.948108	- 2.579330
23-39	- 148889.679	+ 0.070	+ 39.904	- 29287.364	+ 12.220	- 12.466	- 0.872620	+ 487.626880
23-19	- 148869.692	- 19.987	+ 19.987	- 29287.487	+ 0.123	- 0.123	+ 2.458401	+ 2.458401
		+ 20.063			+ 12.343		+ 3.386589	+ 491.013469
		- 20.063			- 12.343		- 491.820728	- 2.579330
							- 488.434139	+ 488.434139
						面積 =	244.217069	

\* \* \* \* 1-4 LOT

面積計算書

\* \* \* \* NO 1

点名	X	DX	DMD.1	Y	DY	DMD.2	DX * DMD.2	DY * DMD.1
23-36	- 148889.439			- 29245.256				
23-20	- 148889.814	+ 0.375	+ 0.375	- 29245.183	- 0.073	- 0.073	- 0.027375	- 0.027375
23-29	- 148890.099	+ 0.285	+ 1.035	- 29287.361	+ 42.178	+ 42.032	+ 11.979120	+ 43.654230
23-39	- 148889.679	- 0.420	+ 0.900	- 29287.364	+ 0.003	+ 84.213	- 35.369460	+ 0.002700
23-36	- 148889.439	- 0.240	+ 0.240	- 29245.256	- 42.108	+ 42.108	- 10.105920	- 10.105920
		+ 0.660			+ 42.181		+ 11.979120	+ 43.656930
		- 0.660			- 42.181		- 45.502755	- 10.133295
							- 33.523635	+ 33.523635
						面積 =	16.761817	

\* \* \* \* \* 各 筆 面 積 計 算 書 \* \* \* \* \*

23 BLOCK

点 名	X	Y	(X-X0)*(YN-1-Y0)	(XN-1-X0)*(Y-Y0)
X0·Y0	- 148800.000	- 29200.000		
23-6	- 148873.273	- 29372.770		
23-7	- 148870.207	- 29370.243	+ 12129.663390	+ 12474.215339
23-8	- 148869.469	- 29251.711	+ 11826.610967	+ 3630.474177
23-9	- 148871.986	- 29248.637	+ 3722.468046	+ 3378.763753
23-10	- 148909.364	- 29241.395	+ 5319.136868	+ 2979.860470
23-11	- 148912.433	- 29243.954	+ 4654.164035	+ 4806.985256
23-21	- 148912.685	- 29287.218	+ 4952.956490	+ 9806.181394
23-24	- 148913.088	- 29351.216	+ 9863.309184	+ 17039.774960
23-12	- 148913.173	- 29363.613	+ 17113.568368	+ 18502.666944
23-13	- 148910.583	- 29366.664	+ 18092.816379	+ 18861.864872
23-5	- 148881.776	- 29371.100	+ 13629.115264	+ 18920.751300
23-6	- 148873.273	- 29372.770	+ 12537.010300	+ 14128.439520
			+113840.819291	+124529.977985
		倍面積	= 10689.158694	
		面積	= 5344.579347	

~~1 LOT~~

点 名	X	Y	(X-X0)*(YN-1-Y0)	(XN-1-X0)*(Y-Y0)
X0·Y0	- 148800.000	- 29200.000		
23-19	- 148869.692	- 29287.487		
23-8	- 148869.469	- 29251.711	+ 6077.634403	+ 3603.843012
23-9	- 148871.986	- 29248.637	+ 3722.468046	+ 3378.763753
23-20	- 148889.814	- 29245.183	+ 4368.283518	+ 3252.543438
23-29	- 148890.099	- 29287.361	+ 4070.943117	+ 7846.240854
23-19	- 148869.692	- 29287.487	+ 6088.362812	+ 7882.491213
			+ 24327.691896	+ 25963.882270
		倍面積	= 1636.190374	
		面積	= 818.095187	

2 LOT

点 名	X	Y	(X-X0)*(YN-1-Y0)	(XN-1-X0)*(Y-Y0)
X0·Y0	- 148800.000	- 29200.000		
23-20	- 148889.814	- 29245.183		
23-10	- 148909.364	- 29241.395	+ 4941.393612	+ 3717.850530
23-11	- 148912.433	- 29243.954	+ 4654.164035	+ 4806.985256
23-21	- 148912.685	- 29287.218	+ 4952.956490	+ 9806.181394
23-29	- 148890.099	- 29287.361	+ 7858.254582	+ 9844.274285
23-20	- 148889.814	- 29245.183	+ 7846.240854	+ 4070.943117
			+ 30253.009573	+ 32246.234582
		倍面積	= 1993.225009	
		面積	= 996.612504	

\* \* \* \* \* 各 筆 面 積 計 算 書 \* \* \* \* \*

3 LOT

点 名	X	Y	(X-X0)*(YN-1-Y0)	(XN-1-X0)*(Y-Y0)
X0·Y0	- 148800.000	- 29200.000		
23-21	- 148912.685	- 29287.218		
23-22	- 148912.899	- 29321.197	+ 9846.824982	+ 13657.083945
23-27	- 148891.391	- 29321.323	+ 11076.315027	+ 13697.245377
23-28	- 148891.194	- 29287.354	+ 11063.929662	+ 7983.369414
23-21	- 148912.685	- 29287.218	+ 9843.485490	+ 7953.758292
			+ 41830.555161	+ 43291.457028
		倍面積	= 1460.901867	
		面積	= 730.450933	

4-1 LOT

点 名	X	Y	(X-X0)*(YN-1-Y0)	(XN-1-X0)*(Y-Y0)
X0·Y0	- 148800.000	- 29300.000		
23-22	- 148912.899	- 29321.197		
23-23	- 148912.990	- 29335.706	+ 2395.049030	+ 4031.171694
23-32	- 148893.004	- 29335.825	+ 3320.800824	+ 4047.866750
23-33	- 148892.901	- 29321.314	+ 3328.178325	+ 1982.287256
23-22	- 148912.899	- 29321.197	+ 2406.329286	+ 1969.222497
			+ 11450.357465	+ 12030.548197
		倍面積	= 580.190732	
		面積	= 290.095366	

4-2 LOT

点 名	X	Y	(X-X0)*(YN-1-Y0)	(XN-1-X0)*(Y-Y0)
X0·Y0	- 148800.000	- 29300.000		
23-23	- 148912.990	- 29335.706		
23-24	- 148913.088	- 29351.216	+ 4037.920128	+ 5786.895840
23-30	- 148893.089	- 29351.324	+ 4767.646224	+ 5804.128512
23-32	- 148893.004	- 29335.825	+ 4773.337296	+ 3334.913425
23-23	- 148912.990	- 29335.706	+ 4047.866750	+ 3320.800824
			+ 17626.770398	+ 18246.738601
		倍面積	= 619.968203	
		面積	= 309.984101	

4-3 LOT

点 名	X	Y	(X-X0)*(YN-1-Y0)	(XN-1-X0)*(Y-Y0)
X0·Y0	- 148800.000	- 29300.000		
23-33	- 148892.901	- 29321.314		
23-32	- 148893.004	- 29335.825	+ 1982.287256	+ 3328.178325
23-30	- 148893.089	- 29351.324	+ 3334.913425	+ 4773.337296



\* \* \* \* \* 各 筆 面 積 計 算 書 \* \* \* \* \*

点 名	X	Y	(X-X0)*(YN-1-Y0)	(XN-1-X0)*(Y-Y0)
23-26	- 148891.582	- 29351.332	+ 4700.354568	+ 4778.444548
23-27	- 148891.391	- 29321.323	+ 4691.282812	+ 1952.802986
23-33	- 148892.901	- 29321.314	+ 1980.928023	+ 1947.907774
			+ 16689.766084	+ 16780.670929
		倍面積	= 90.904845	
		面積	= 45.452422	

4-4 LOT

点 名	X	Y	(X-X0)*(YN-1-Y0)	(XN-1-X0)*(Y-Y0)
X0·Y0	- 148900.000	- 29300.000		
23-24	- 148913.088	- 29351.216		
23-12	- 148913.173	- 29363.613	+ 674.668368	+ 832.566944
23-13	- 148910.583	- 29366.664	+ 673.216379	+ 878.164872
23-14	- 148902.425	- 29367.920	+ 161.660200	+ 718.797360
23-31	- 148902.319	- 29351.274	+ 157.506480	+ 124.339450
23-24	- 148913.088	- 29351.216	+ 671.074112	+ 118.769904
			+ 2338.125539	+ 2672.638530
		倍面積	= 334.512991	
		面積	= 167.256495	

4-5 LOT

点 名	X	Y	(X-X0)*(YN-1-Y0)	(XN-1-X0)*(Y-Y0)
X0·Y0	- 148800.000	- 29300.000		
23-14	- 148902.425	- 29367.920		
23-15	- 148891.691	- 29369.573	+ 6227.652720	+ 7126.014525
23-26	- 148891.582	- 29351.332	+ 6371.634486	+ 4706.682412
23-31	- 148902.319	- 29351.274	+ 5252.238908	+ 4695.775468
23-14	- 148902.425	- 29367.920	+ 5251.739450	+ 6949.506480
			+ 23103.265564	+ 23477.978885
		倍面積	= 374.713321	
		面積	= 187.356660	

5-1 LOT

点 名	X	Y	(X-X0)*(YN-1-Y0)	(XN-1-X0)*(Y-Y0)
X0·Y0	- 148800.000	- 29300.000		
23-15	- 148891.691	- 29369.573		
23-16	- 148886.690	- 29370.343	+ 6031.283370	+ 6449.820013
23-25	- 148886.609	- 29355.181	+ 6092.336887	+ 4783.640890
23-17	- 148870.114	- 29355.284	+ 3868.960634	+ 4788.091956
23-18	- 148869.904	- 29321.469	+ 3864.572736	+ 1505.277466
23-27	- 148891.391	- 29321.323	+ 1962.073379	+ 1490.562992
23-26	- 148891.582	- 29351.332	+ 1952.802986	+ 4691.282812

\* \* \* \* \* 各 筆 面 積 計 算 書 \* \* \* \* \*

点 名	X	Y	(X-X0)*(YN-1-Y0)	(XN-1-X0)*(Y-Y0)
23-15	- 148891.691	- 29369.573	+ 4706.682412	+ 6371.634486
			+ 28478.712404	+ 30080.310615
		倍面積	= 1601.598211	
		面積	= 800.799105	

5-2 LOT

点 名	X	Y	(X-X0)*(YN-1-Y0)	(XN-1-X0)*(Y-Y0)
X0-Y0	- 148800.000	- 29300.000		
23-16	- 148886.690	- 29370.343		
23-5	- 148881.776	- 29371.100	+ 5752.369168	+ 6163.659000
23-6	- 148873.273	- 29372.770	+ 5209.710300	+ 5950.839520
23-7	- 148870.207	- 29370.243	+ 5108.963390	+ 5146.915339
23-17	- 148870.114	- 29355.284	+ 4925.017702	+ 3881.323788
23-25	- 148886.609	- 29355.181	+ 4788.091956	+ 3868.960634
23-16	- 148886.690	- 29370.343	+ 4783.640890	+ 6092.336887
			+ 30567.793406	+ 31104.035168
		倍面積	= 536.241762	
		面積	= 268.120881	

6 LOT

点 名	X	Y	(X-X0)*(YN-1-Y0)	(XN-1-X0)*(Y-Y0)
X0-Y0	- 148800.000	- 29200.000		
23-18	- 148869.904	- 29321.469		
23-19	- 148869.692	- 29287.487	+ 8465.417548	+ 6115.691248
23-29	- 148890.099	- 29287.361	+ 7882.491213	+ 6088.362812
23-28	- 148891.194	- 29287.354	+ 7966.799034	+ 7870.508046
23-27	- 148891.391	- 29321.323	+ 7983.369414	+ 11063.929662
23-18	- 148869.904	- 29321.469	+ 8480.962992	+ 11101.173379
			+ 40779.040201	+ 42239.665147
		倍面積	= 1460.624946	
		面積	= 730.312473	

1 区切り

点 名	X	Y	(X-X0)*(YN-1-Y0)	(XN-1-X0)*(Y-Y0)
X0-Y0	- 148800.000	- 29300.000		
23-1	- 148870.226	- 29373.368		
23-6	- 148873.273	- 29372.770	+ 5375.893464	+ 5110.346020
23-7	- 148870.207	- 29370.243	+ 5108.963390	+ 5146.915339
23-1	- 148870.226	- 29373.368	+ 4932.884918	+ 5150.947176
			+ 15417.741772	+ 15408.208535
		倍面積	= 9.533237	
		面積	= 4.766618	

\* \* \* \* \* 各 筆 面 積 計 算 書 \* \* \* \* \*

2 区画

点 名	X	Y	(X-X0)*(YN-1-Y0)	(XN-1-X0)*(Y-Y0)
X0・Y0	- 148800.000	- 29200.000		
23-2	- 148869.453	- 29249.128		
23-8	- 148869.469	- 29251.711	+ 3412.873032	+ 3591.484083
23-9	- 148871.986	- 29248.637	+ 3722.468046	+ 3378.763753
23-2	- 148869.453	- 29249.128	+ 3377.985561	+ 3536.528208
			+ 10513.326639	+ 10506.776044
		倍面積	= 6.550595	
		面積	= 3.275297	

3 区画

点 名	X	Y	(X-X0)*(YN-1-Y0)	(XN-1-X0)*(Y-Y0)
X0・Y0	- 148900.000	- 29200.000		
23-3	- 148912.415	- 29240.804		
23-10	- 148909.364	- 29241.395	+ 382.088656	+ 513.918925
23-11	- 148912.433	- 29243.954	+ 514.664035	+ 411.585256
23-3	- 148912.415	- 29240.804	+ 545.688910	+ 507.316132
			+ 1442.441601	+ 1432.820313
		倍面積	= 9.621288	
		面積	= 4.810644	

4 区画

点 名	X	Y	(X-X0)*(YN-1-Y0)	(XN-1-X0)*(Y-Y0)
X0・Y0	- 148900.000	- 29300.000		
23-4	- 148913.191	- 29366.262		
23-12	- 148913.173	- 29363.613	+ 872.869326	+ 839.119083
23-13	- 148910.583	- 29366.664	+ 673.216379	+ 878.164872
23-4	- 148913.191	- 29366.262	+ 879.364824	+ 701.250746
			+ 2425.450529	+ 2418.534701
		倍面積	= 6.915828	
		面積	= 3.457914	

\* \* \* 各筆面積 集計表 \* \* \*

街区名・筆名	各筆面積	隅切面積
23 BLOCK	5344.57	
1 LOT	818.09	
2 LOT	996.61	
3 LOT	730.45	
4-1 LOT	290.09	
4-2 LOT	309.98	
4-3 LOT	45.45	
4-4 LOT	167.25	
4-5 LOT	187.35	
5-1 LOT	800.79	
5-2 LOT	268.12	
6 LOT	730.31	
1 ｽｽﾞｷ		4.76
2 ｽｽﾞｷ		3.27
3 ｽｽﾞｷ		4.81
4 ｽｽﾞｷ		3.45
合計 =	5344.49	16.29