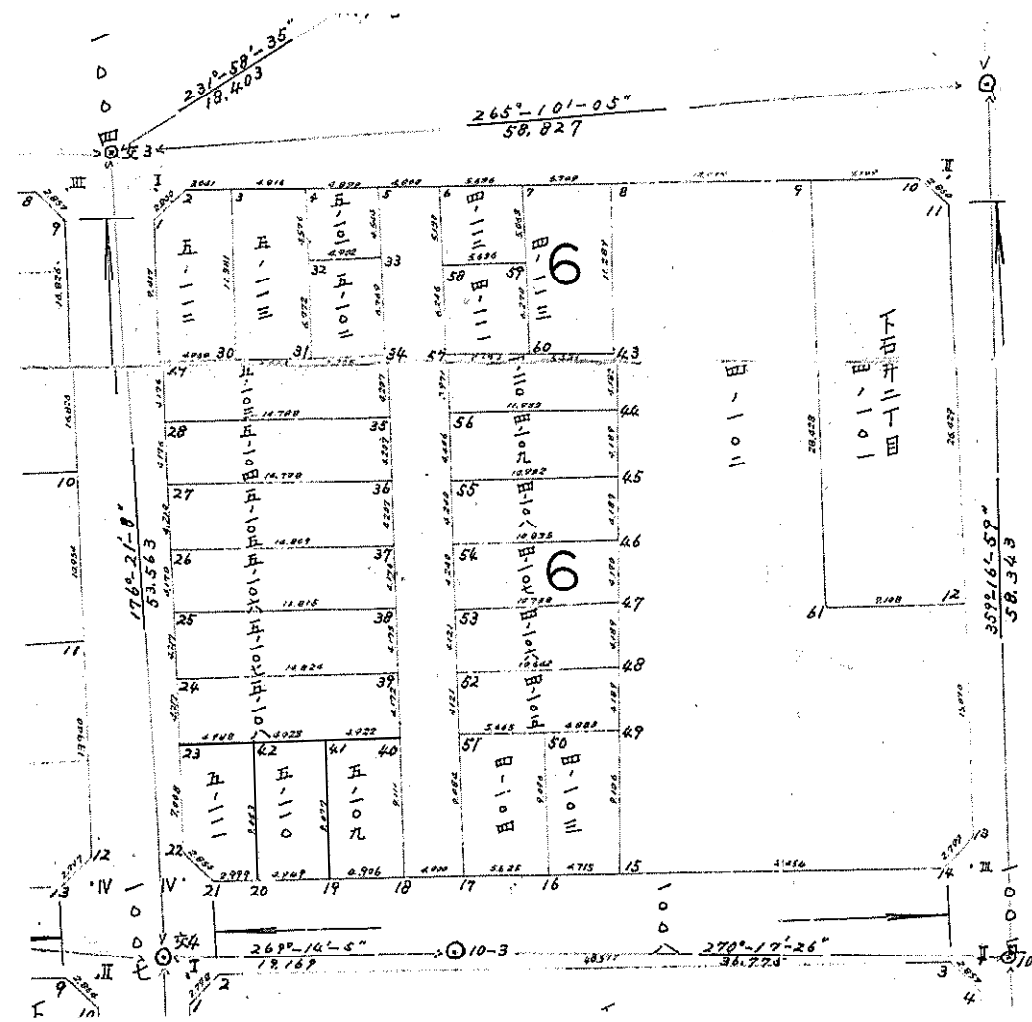


6 フ" ロ ッ ク



座標面積計算

工
区

ブ
ロ
ック

6

計
算
者

太田春雄

点
検
者

野崎

備
考

196

地 番	①	②	③	④	⑤	⑥	③	×	⑤	②	×	⑥
	X	X-(定数)	X _{n-1} -X _{n-1}	Y	Y-(定数)	Y _{n-1} -Y _{n-1}	÷		-	+		-
308-22			55.054248 /		308-31				45.437016 /			
308-21			55.220389 /		308-33				45.187492 /			
308-1			22.344264 /		308-34				47.190386 /			
308			33.191534 /		308-35				45.867118 /			
通路			182.223378 /		308-36				45.453169 /			
308-32			28.772814 /		308-37				44.421978 /			
308-42			35.273949 /		308-38				44.016873 /			
308-2			63.531024 /		308-40				51.299752 /			
308-20			782.572058 /		308-39				43.677346 /			
308-23			61.957784 /		4-13				256.882536 /			
308-24			61.997543 /	1382.02885	小計				2386.933110 /			
308-25			62.289410 /		隅切 1				1.999640 /			
308-26			61.791571 /		2				1.999762 /			
308-27			62.161134 /		3				1.999693 /			
308-28			62.185837 /		4				1.999825 /			
308-29			42.222682 /		合計				2394.991030 /			
308-30			44.709825 /		全面積				2394.993204 /			

$\epsilon = -0.062174 /$

座標面積計算

工区

ブロック

6

計算者

太田春雄

点検者



備考

196

地番	点	①	②	③	④	⑤	⑥	③ × ⑤	② × ⑥		
		X	X-(定数)	X _{n-1} -X _{n-2}	Y	Y-(定数)	Y _{n-1} -Y _{n-2}	÷	-	+	-
			(148.700.000)			(37.800.000)					
I		148,909,345	+ 7,345	+ 46,129	37,826,329	+ 26,329	+ 51,149	1,214,530,441		477,968,715	
II		148,908,786	+ 8,786	+ 44,915	37,773,788	- 26,212	+ 54,038	1,177,311,980		474,777,868	
III		148,954,260	+ 54,260	+ 46,129	37,772,291	- 27,709	+ 51,147	1,278,188,461			2,775,236,220
IV		148,954,915	+ 54,915	+ 44,915	37,824,935	+ 24,935	+ 54,038	1,119,955,525			3,967,496,770
				+ 71,044			+ 105,185	4,789,986,407	0.000,000	952,746,583	5,742,732,990
				- 71,044			- 105,185	0.000,000			952,746,583
				0.000			0.000	4,789,986,407			4,789,986,407
								1/2 2,394,993,204			1/2 = 2,394,993,204

座標面積計算

工区

ブロック

6

計測者

太田春幸

点検者



備考

196

地番	点	①	②	③	④	⑤	⑥	③ × ⑤		② × ⑥	
		X	X-(定数)	X _{n-1} -X _{n-1}	Y	Y-(定数)	Y _{n-1} -Y _{n-1}	+	-	+	-
			(148.910.000)			(37.820.000)					
I	1	148.909.345	- 0.655	+ 2.020	37.826.329	+ 6.329	1.939	12.784580			1.270045
	2	148.909.324	- 0.676	- 1.999	37.824.329	+ 4.329	0.061		8.653671		0.041236
	1	148.911.344	+ 1.344	- 0.021	37.826.268	+ 6.268	2.000		0.131628		2.688000
								12.784580	8.785299		F= 3.999281
								8.785299			F _{1/2} = 1.999640
								F= 3.999281			F _{1/2} = 1.999640

		(148.910.000)			(37.820.000)						
1	148.911.344	+ 1.344	11.433	37.826.268	+ 6.268	1.651	71.662044			2.218944	
2	148.909.324	- 0.676	2.053	37.824.329	+ 4.329	4.980	8.887437			3.366480	
3	148.909.291	- 0.709	11.345	37.821.288	+ 1.288	3.318		14.612360		2.352462	
30	148.920.669	+ 10.669	11.466	37.821.011	+ 1.011	4.692		11.592126		50.058968	
29	148.920.757	+ 10.757	12.013 9.325	37.825.980	+ 5.980	5.257	55.763500			56.549549	
							135.312981	26.204486	2.218944	112.327439	
							26.204486			2.218944	
							F= 110.108485			F= 110.108485	
							F _{1/2} = 55.054248			F _{1/2} = 55.054248	

陽切

三〇八三三

面積計算書

6

計算者 太田春美

備考

点	① X	② X-(定数) (148.910.000)	③ X _{n-1}-X_n}	④ Y	⑤ Y-(定数) (37.820.000)	⑥ Y _{n-1}-Y_n}	③ × ⑤ +	⑤ -	② × ⑥ +	⑥ -
3	148.909.291	-0.709	11.429	37.821.288	+1.288	4.538	14.720.552			3.217.442
4	148.909.240	-0.760	11.291	37.816.473	+3.527	5.180	39.823.357			3.936.800
31	148.920.582	+10.582	11.429	37.816.108	-3.892	4.538	44.481.668			48.021.116
30	148.920.669	+10.669	11.291	37.821.011	+1.011	5.180	11.415.201			55.265.420
							F = 110.440.778			F = 110.440.778
							F _{1/2} = 55.220.389			F _{1/2} = 55.220.389

点	① X	② X-(定数) (148.910.000)	③ X _{n-1}-X_n}	④ Y	⑤ Y-(定数) (37.810.000)	⑥ Y _{n-1}-Y_n}	③ × ⑤ +	⑤ -	② × ⑥ +	⑥ -	
4	148.909.240	-0.760	4.626	37.816.473	+6.473	4.752	29.944.098			3.511.520	
5	148.909.188	-0.812	4.490	37.811.574	+1.574	5.048		7.067.260		4.098.976	
33	148.913.730	+3.730	4.626	37.811.425	+1.425	4.752		6.592.050		17.724.960	
32	148.913.814	+3.814	4.490	37.816.326	+6.326	5.048	28.403.740			19.253.072	
							58.347.838 / 13.659.310			F = 44.688.528	
							13.659.310				F _{1/2} = 22.344.264
							F = 44.688.528				
							F _{1/2} = 22.344.264				

三〇八一

三〇八一

面積計算書

太田春美

三〇八四三

通路

点	① X	② X-(定数) (48.910.000)	③ $X_{n-1} - X_{n-2}$	④ Y	⑤ Y-(定数) (37.810.000)	⑥ $Y_{n-1} - Y_{n-2}$	+	-	+	-
32	148.913.814	+3.814	6.852	37.816.328	+6.328	4.683	43.345752			17.860962
33	148.913.730	+3.730	6.681	37.811.425	+1.425	5.122		9.520425		19.105060
34	148.920.495	+10.495	6.852	37.811.204	+1.204	4.683		8.249808		49.148085
31	148.920.582	+10.582	6.681	37.816.108	+6.108	5.122	40.807548			54.201004
							84.153300	17.770233	36.966022	103.349089
							17.770233			36.966022
							F=66.383067			F=66.383067
							F/2=33.191534			F/2=33.191534
5	148.909.188	-20.812	45.585	37.811.574	+1.574	2.508	71.750790			52.196496
6	148.909.165	-20.855	45.492	37.807.574	+2.426	5.492	110.363592			114.535660
17	148.954.680	+24.680	45.585	37.806.082	+3.918	2.508	178.602030			61.897440
18	148.954.730	+24.730	45.492	37.810.082	+0.082	5.492	3.730344			135.817160
							F=364.446756			F=364.446756
							F/2=182.223378			F/2=182.223378

面積計算書

工区

ブロック

計算者 太田春美

精算者

備考

①	②	③	④	⑤	⑥	⑦	⑧	⑨	⑩
X	Y (定数)	Xn - Yn	Xn	Yn (定数)	Yn	Yn - Xn			
6	148.909.145	0.855	5.187	37.807.574	7.574	5.468	39.286.338		4.675.140
7	148.909.086	0.914	5.001	37.801.938	1.938	5.803	9.691.938		5.303.942
59	148.914.146	4.146	5.187	37.801.771	1.771	5.468	9.186.177		22.670.328
58	148.914.273	4.273	5.001	37.807.406	7.406	5.803	37.037.406		24.716.219
							76.323.744	18.878.115	F= 57.445.629
							18.878.115		F/2= 28.722.814
							F= 57.445.629		F/2= 28.722.814

①	②	③	④	⑤	⑥	⑦	⑧	⑨	⑩	
X	Y (定数)	Xn - Yn	Xn	Yn (定数)	Yn	Yn - Xn				
58	148.914.273	4.273	6.369	37.807.406	7.406	5.430	47.168.814		23.202.390	
59	148.914.146	4.146	6.140	37.801.771	1.771	5.842	10.873.940		24.220.932	
60	148.920.413	10.413	6.369	37.801.564	1.564	5.430	9.961.116		56.542.590	
57	148.920.515	10.515	6.140	37.807.201	7.201	5.842	44.214.140		61.428.630	
							91.382.954	20.835.056	47.423.322	117.971.220
							20.835.056		47.423.322	
							F= 70.547.898		F= 70.547.898	
							F/2= 35.273.949		F/2= 35.273.949	

三〇八一三

三〇八一四

座標面積計算

工区

ブロック

6

計区番 太田春美

点検者



備考

196

地番	点	①	②	③	④	⑤	⑥	③ × ⑤	② × ⑥	
		X	X-(定数)	X _{n-1} -X _{n-2}	Y	Y-(定数)	Y _{n-1} -Y _{n-2}	+	-	+
			(428.910.000)			(37.800.000)				
7	148.909.086	0.914	11.389	37.801.938	1.938	5.374	22.071882		4.911836	
8	148.909.024	0.976	11.227	37.796.190	-3.810	5.859	42.774870		5.718384	
43	148.920.313	10.313	11.389	37.796.079	3.921	5.374	44.656269		55.422062	
60	148.920.413	10.413	11.227	37.801.564	1.564	5.859	17.559028		61.009767	
							F = 127.062049		F = 127.062049	
							F _{1/2} = 63.531024		F _{1/2} = 63.531024	
			(148.930.000)			(37.780.000)				
8	148.909.024	20.976	45.669	37.796.190	+16.190	12.847	739.381110		269.478672	
9	148.908.883	21.117	28.272	37.782.896	2.896	14.229		81.875712	300.473793	
61	148.937.296	7.296	28.316	37.781.961	1.961	10.043		55.527676	73.273728	
12	148.937.199	7.199	14.965	37.772.853	-7.147	9.604	106.954853		69.139196	
13	148.952.261	22.261	17.086	37.772.357	-7.643	1.438	130.588298		32.011318	
14	148.954.285	24.285	2.291	37.774.291	5.709	23.386	13.079319		567.929010	
15	148.954.552	24.552	45.261	37.795.743	15.743	21.899	2.5439		537.664248	
							1702.5439	137.403388	142.412924	1707.557041
							137.403388		142.412924	
							F = 1565.144117		F = 1565.144117	
							F _{1/2} = 782.572058		F _{1/2} = 782.572058	

三〇八一

下石三〇八一〇

座標面積計算

工区

ブロック

6

計測者 太田春幸

点検者



備考

196

地点番	①	②	③	④	⑤	⑥	③	×	⑤	②	×	⑥	
	X	X-(定数)	X _{n-1} -X _{n-1}	Y	Y-(定数)	Y _{n-1} -Y _{n-1}	+		-	+		-	
28	148.924.931	(148.920.000) 4.931	3.943	37.825.852	(37.820.000) 5.852	14.914	23.074436					73.540934	
29	148.920.757	0.757	4.436	37.825.980	5.980	14.648	26.527280			11.088536			
34	148.920.495	0.495	3.943	37.811.204	8.796	14.914	34.682628			7.382430			
35	148.924.700	4.700	4.436	37.811.066	8.934	14.648	39.631224			18.470966		68.845600	
							F = 123.915568					142.386534	
							F ₂ = 61.957784						18.470966
													E = 123.915568
													F ₂ = 61.957784
27	148.929.105	(148.920.000) 9.105	3.974	37.825.725	(37.820.000) 5.725	14.924	22.751150					135.883020	
28	148.924.931	4.931	4.405	37.825.852	5.852	14.659	25.778060			72.283529			
35	148.924.700	4.700	3.974	37.811.066	8.934	14.924	35.503716			70.142800			
36	148.928.905	8.905	4.405	37.810.928	9.072	14.659	39.962160			142.426329		130.538395	
							F = 123.995086						266.421415
							F ₂ = 61.997543						142.426329
													E = 123.995086
													F ₂ = 61.997543

三〇八一三

三〇八一四

座標面積計算

工区

6

計測者

太田春雄

点検者



備考

196

地点番	①	②	③	④	⑤	⑥	③	×	⑤	②	×	⑥	
	X	X-(定数)	X _{n-1} -X _{n-1}	Y	Y-(定数)	Y _{n-1} -Y _{n-1}	+		-	+		-	
26	148.933.278	³¹³ 3.278	4.005	37.825.597	⁶ 5.597	14.935	22.415	985	1980	48.856	930	9.479.655	
27	148.929.105	0.895	⁴⁰⁸ 4.373	37.825.725	5.725	14.668	25.035	425	235800	7860		13.128.755	
36	148.928.905	1.095	4.005	37.810.928	9.072	14.935	36.333	360	597680	17480		16.353.825	
37	148.933.110	3.110	⁴⁰⁸ 4.373	37.810.790	9.210	14.668	40.275	330	578820	578820		45.620.590	
							F	124.050.700				F=	124.050.700
							F _{1/2}	62.025.350		289410		F _{1/2}	62.025.350

25	148.937.446	⁸¹ 7.446	4.005	37.825.468	⁸ 5.468	14.943	21.903	345	707960			111.781.102	
26	148.933.278	³¹³ 3.278	⁷¹ 4.336	37.825.597	⁶ 5.597	14.678	24.268	592	460116	628214		48.117.762	
37	148.933.110	3.110	^{3.970} 4.005	37.810.790	9.210	14.943	36.886	050	513700	69620		46.472.730	
38	148.937.283	7.283	⁷¹ 4.336	37.810.654	9.346	14.678	40.524	256	851366			106.907.157	
							F	123.582.243		3122		F=	123.582.243
							F _{1/2}	61.791.122		571		F _{1/2}	61.791.122

三〇八一五

三〇八一六

座標面積計算

工区

ブロック

6

計測者 太田春雄

点検者



備考

196

地点	①	②	③	④	⑤	⑥	③ × ⑤	② × ⑥
	X	X-(定数)	X _{n-1} -X _{n-2}	Y	Y-(定数)	Y _{n-1} -Y _{n-2}	+	-
24	148.941.696	(148.940.000) 1.696	3.973 4.998	37.825.339	(37.820.000) 5.339	14.958	21.398712	25.358592
25	148.937.446	2.554	4.413	37.825.468	5.468	14.685	24.134697	37.505490
38	148.937.283	2.717	3.973 4.998	37.810.654	9.346	14.958	37.458768	40.624584
39	148.941.454	1.454	4.413	37.810.517	9.483	14.685	41.848478	21.351990
							F = 124.840556	F = 124.840556
							F ₂ = 62.420328	F ₂ = 62.420328

23	148.945.946	(148.940.000) 5.946	3.927	37.825.209	(37.820.000) 5.209	14.959	20.458743	88.946214
24	148.941.696	1.696	4.492	37.825.339	5.339	14.692	23.982788	24.917632
39	148.941.454	1.454	3.927	37.810.517	9.483	14.959	37.239741	21.750386
40	148.945.623	5.623	4.492	37.810.380	9.620	14.692	43.213040	82.613716
							F = 124.871312	F = 124.871312
							F ₂ = 62.445656	F ₂ = 62.445656

三〇八二七

三〇八二八

座標面積計算

工区

ブロック

6

計測者 太田春雄

点検者



備考

196

地点番	①	②	③	④	⑤	⑥	③	×	⑤	②	×	⑥
	X	X-(定数)	X _{n-1} -X _n	Y	Y-(定数)	Y _{n-1} -Y _n	+		-	+		-
22	148.952.916 ^(148,950.000)	2.916	0.025	37.824.996 ^(37,820.000)	4.996	2.000	0.124900			5.832000		
21	148.954.890	4.890	1.999	37.822.935	2.935	0.061			5.867065	0.298290		
Tv	148.954.915	4.915	1.974	37.824.935	4.935	2.061	9.741690		5.867065	6.130290		10.129815
							9.866590		5.867065	6.130290		10.129815
							5.867065			6.130290		6.130290
							F= 3.999525			F= 3.999525		
							F _{1/2} = 1.999762			F _{1/2} = 1.999762		

陽切

三〇八二九

22	148.952.916 ^(148,950.000)	2.916	8.944 ⁷⁹	37.824.996 ^(37,820.000)	4.996	3.145	859084			170820		
23	148.945.946 ¹¹	4.056 ⁸⁹	7.079 ¹⁰²	37.825.209 ¹⁰	5.209	4.773	7.001420			516397		
42	148.945.837 ¹⁴	4.165 ⁸⁶	8.906 ⁴¹	37.820.223	0.223	5.273	36.874511			19.349762		
20	148.954.852 ¹⁴	4.852	9.053 ⁷⁶	37.819.936	0.064	1.842	580864			2.076984		
21	148.954.890	4.890	1.936	37.822.935	2.065	5.060	1.986038		993843	21.951499		
							86.731907		93843	24.743400		
							1.986038		1.986038	5365		
							445365			F= 84.449929		
							F= 84.449929			F _{1/2} = 222682		
							F _{1/2} = 42.074964			F _{1/2} = 42.074964		

座標面積計算

工
区

プロ
ック

6

計
算
者
太田春雄

点
検
者



備
考

196

地 番 点	①	②	③	④	⑤	⑥	③	×	⑤	②	×	⑥
	X	X-(定数)	X _{n-1} -X _{n-1}	Y	Y-(定数)	Y _{n-1} -Y _{n-1}	+		-	+		-

42	148.945.857 ¹⁴	4.183 ^(148,950.000)	9.122 ³³	37.820.223	0.223 ^(37,820.000)	4.635	2.034	206	6659	19.295	505	402.110
41	148.945.730 ¹⁹	4.270 ⁸¹	8.954 ⁷⁷	37.815.301	4.699 ⁷⁷	5.235	42.074	846	182.923	22.353	450	411.035
19	148.954.791 ³³	4.791 ⁷⁷	9.122 ³³	37.814.988	5.012 ⁷⁷	4.635	45.719	464	774.596	22.206	285	457.719
20	148.954.852 ⁷⁷	4.852 ⁷⁷	8.954 ⁷⁷	37.819.936	0.064 ⁷⁷	5.235	994.178	0.573	4528	25.400	220	452.852
							89.828	546	0.573	056	F=	89.255
							0.573	056	4528	F/2=	44.627	730
							70.825					44.627

41	148.945.730 ¹⁹	4.270 ^(148,950.000)	9.168	37.815.301	5.301 ^(37,810.000)	4.608	48.599	568		19.726	868	
40	148.945.623	4.377	9.000 ¹¹	37.810.380	0.380 ¹¹	5.383	3.420	000	4.180	23.561	391	
18	148.954.730 ¹¹	4.730 ¹¹	9.168	37.810.082	0.082 ¹¹	4.608	0.751	776		21.795	840	
19	148.954.791 ¹¹	4.791 ¹¹	9.000 ¹¹	37.814.988	4.988 ¹¹	5.383	94.243	344	946.868	25.789	953	
							44.892	000	4.180	F=	90.823	344
							3.420	000		F/2=	45.411	672
							37.016					45.411

三〇八一〇

三〇八一〇

座標面積計算

工区

ブロック

6

計測者

太田春雄

点検者

野崎

備考

196

地番	点	①	②	③	④	⑤	⑥	③	×	⑤	②	×	⑥
		X	X-(定数)	X _{n-1} -X _{n-1}	Y	Y-(定数)	Y _{n-1} -Y _{n-1}	+		-	+		-

56	148.920.484	(148.920.000) 4.484	3.986	37.807.071	(37.800.000) 7.071	11.163	28.185006						50.054892		
57	148.920.515	0.515	4.171	37.807.201	7.201	10.992	30.035371				5.660880				
43	148.920.313	0.313	3.986	37.796.079	3.921	11.163	15.629106				3.494019				
44	148.924.501	4.501	4.171	37.796.038	3.962	10.992	16.525502						49.474992		
							F=	90.374985			9.154899		99.529884		
							F _{1/2} =	45.187492					9.154899		
													F=	90.374985	
														F _{1/2} =	45.187492

55	148.920.888	(148.920.000) 8.888	4.206	37.806.927	(37.800.000) 6.927	11.074	29.134962						98.425712		
56	148.924.484	4.484	4.387	37.807.071	7.071	10.889	31.020477				4.8.826276				
44	148.924.501	4.501	4.206	37.796.038	3.962	11.074	16.664172				4.9.844074				
45	148.928.690	8.690	4.387	37.795.997	4.003	10.889	17.561161						94.625410		
							F=	94.380772			98.670350		193.051122		
							F _{1/2} =	47.190386					98.670350		
														E=	94.380772
														F _{1/2} =	47.190386

三〇八三三

三〇八三四

座標面積計算

工
区

フ
ロ
ツ
ク

6

計
算
者

太田春美

点
検
者



備
考

196

地 番 点	①	②	③	④	⑤	⑥	③	X	⑤	②	X	⑥	
	X	X-(定数)	X _{n-1} -X _{n-1}	Y	Y-(定数)	Y _{n-1} -Y _{n-1}	+		-	+		-	
54	148.933.126	^(148,930.000) 3.126	3.991	87.806.788	^(37,800.000) 6.788	10.971	27.090	908				34.295346	
55	148.928.888	1.112	4.436	87.806.927	6.927	10.791	30.728	172				11.999592	
45	148.928.690	1.310	3.991	137.795.997	4.003	10.971	15.975	973				14.372010	
46	148.932.879	2.879	4.436	87.795.956	4.044	10.791	17.939	184				31.067289	
							F=	91.734	237		F=	91.734	237
							F ₂ =	45.867	118		F ₂ =	45.867	118

53	148.937.363	^(148,930.000) 7.363	3.942	87.806.649	^(37,800.000) 6.649	10.873	26.210	358				80.057899	
54	148.933.126	3.126	4.484	87.806.788	6.788	10.693	30.437	392			33.426	318	
46	148.932.879	2.879	3.942	137.795.956	4.044	10.873	15.941	448			31.303	367	
47	148.937.068	7.068	4.484	87.795.915	4.085	10.693	18.317	140				75.578124	
							F=	90.906	338		64.729	685	55.636023
							F ₂ =	45.453	169		64.729	685	
											F=	90.906	338
											F ₂ =	45.453	169

三〇八三五

三〇八三六

座標面積計算

工区

ブロック

6

計測者 太田春幸

点検者



備考

196

地点番	①	②	③	④	⑤	⑥	③ × ⑤		② × ⑥	
	X	X-(定数)	X _{n-1} -X _{n-1}	Y	Y-(定数)	Y _{n-1} -Y _{n-1}	+	-	+	-
		(148,940.000)			(37,800.000)					
52	148,941.482	1.482	3.895	37,806,514	6.514	10.775	25.372030			15,968.550
53	148,937.363	2.637	4.414	37,806,649	6.649	10.599	29.348686			27,949.563
47	148,937.068	2.932	3.895	37,795,915	4.085	10.775	15.911075			31,592.300
48	148,941.258	1.258	4.414	37,795,874	4.126	10.599	18.212164			13,333.542
						F	88.843955			F= 88.843955
						F/2	44.421978			F/2= 44.421978
		(148,940.000)			(37,800.000)					
51	148,945.601	5.601	3.964	37,806,379	6.379	10.682	25.286356			59,829.882
52	148,941.482	1.482	4.343	37,806,514	6.514	10.505	28.290302		15,568.410	
48	148,941.258	1.258	3.964	37,795,874	4.126	10.682	16.355464		13,437.956	
49	148,945.446	5.446	4.343	37,795,832	4.168	10.505	18.101624			57,210.230
						F	88.033746		29,006.366	117,040.112
						F/2	44.016873			29,006.366
										F= 88.033746
										F/2= 44.016873

三〇八一三七

三〇八一三八

座標面積計算

工区

ブロック

6

計測者 太田春美

点検者



備考

196

地点番	①	②	③	④	⑤	⑥	③ × ⑤		② × ⑥	
	X	X-(定数)	X _{n-1} -X _{n-1}	Y	Y-(定数)	Y _{n-1} -Y _{n-1}	+	-	+	-

17	148,954.680	4.680	9.009	37,806.082	6.082	5.921	54.792738			27.710280	
51	148,945.601	4.399	9.162	37,806.379	6.379	5.367	58.444398			23.609433	
50	148,945.518	4.482	9.009	37,800.715	0.715	5.921		6.441435		26.537922	
14	148,954.610	4.610	9.162	37,800.458	0.458	5.367		4.196196		24.741870	
							113.237136	10.637631			F = 102.599505
							10.637631				F _{1/2} = 51.299752
							F = 102.599505				F _{1/2} = 51.299752
							F _{1/2} = 51.299752				

15	148,954.552	4.552	9.164	37,795.743	4.257	4.626	38.011148			21.057552	
16	148,954.610	4.610	9.034	37,800.458	0.458	4.972	4.137572			22.920920	
50	148,945.518	4.482	9.164	37,800.715	0.715	4.626	6.552260			20.733732	
49	148,945.446	4.554	9.034	37,795.832	4.168	4.972	37.653712			22.642488	
							F = 87.354692				F = 87.354692
							F _{1/2} = 43.677346				F _{1/2} = 43.677346

三〇八四

三〇八三九

座標面積計算

工区

ブロック

6

計測者 太田春美

点検者



備考

196

地番	①	②	③	④	⑤	⑥	③ × ⑤	② × ⑥	
	X	X-(定数)	X _{n-1} -X _{n-1}	Y	Y-(定数)	Y _{n-1} -Y _{n-1}	+	-	
10	148,908.807	8.807	1.998	37,775.788	5.788	0.066	11,564,424	0.581,262	
11	148,908.786	8.786	1.977	37,773.788	3.788	2.066	7,488,876	18,151,876	
17	148,910.784	10.784	0.021	37,773.722	3.722	2.000	0.078,162	21,568,000	
							11,564,424	7,567,038	18,151,876
							F = 3,997,386	F = 3,997,386	
							F _{1/2} = 1,998,693	F _{1/2} = 1,998,693	
9	148,908.883	1.117	28.489	37,782.896	12.896	4.173	367,394,144	6,895,241	
10	148,908.807	1.193	1.901	37,775.788	5.788	9.174	11,002,988	10,944,582	
11	148,910.784	0.784	28.392	37,773.722	3.722	2.935	105,675,024	2,301,040	
12	148,937.199	27.199	26.512	37,772.853	2.853	8.239	75,638,736	224,092,561	
61	148,937.296	27.296	28.316	37,781.961	11.961	10.043	338,687,676	274,133,728	
							706,081,820	192,316,748	2,301,040
							F = 513,765,072	F = 513,765,072	
							F _{1/2} = 256,882,536	F _{1/2} = 256,882,536	

陽
切

内
下
四
一
三

座標面積計算

工区

ブロック

6

計測者 太田春雄

点検者



備考

198

地点番	①	②	③	④	⑤	⑥	③ × ⑤		② × ⑥	
	X	X-(定数)	X _{n-1} -X _n	Y	Y-(定数)	Y _{n-1} -Y _n	+	-	+	-
		(148,950.000)			(37,770.000)					
13	148,952.261	2.261	0.025	37,772.35	2.357	2.000	0.058925		4.522000	
12	148,954.260	4.260	2.024	37,772.291	2.291	1.934		4.636984		8.238840
14	148,954.285	4.285	1.999	37,774.291	4.291	0.066	8.577709			0.282810
							8.636634	4.636984	4.522000	8.521650
							4.636984			4.522000
							F= 3.999650			F= 3.999650
							F ₂ = 1.999825			F ₂ = 1.999825

隅切