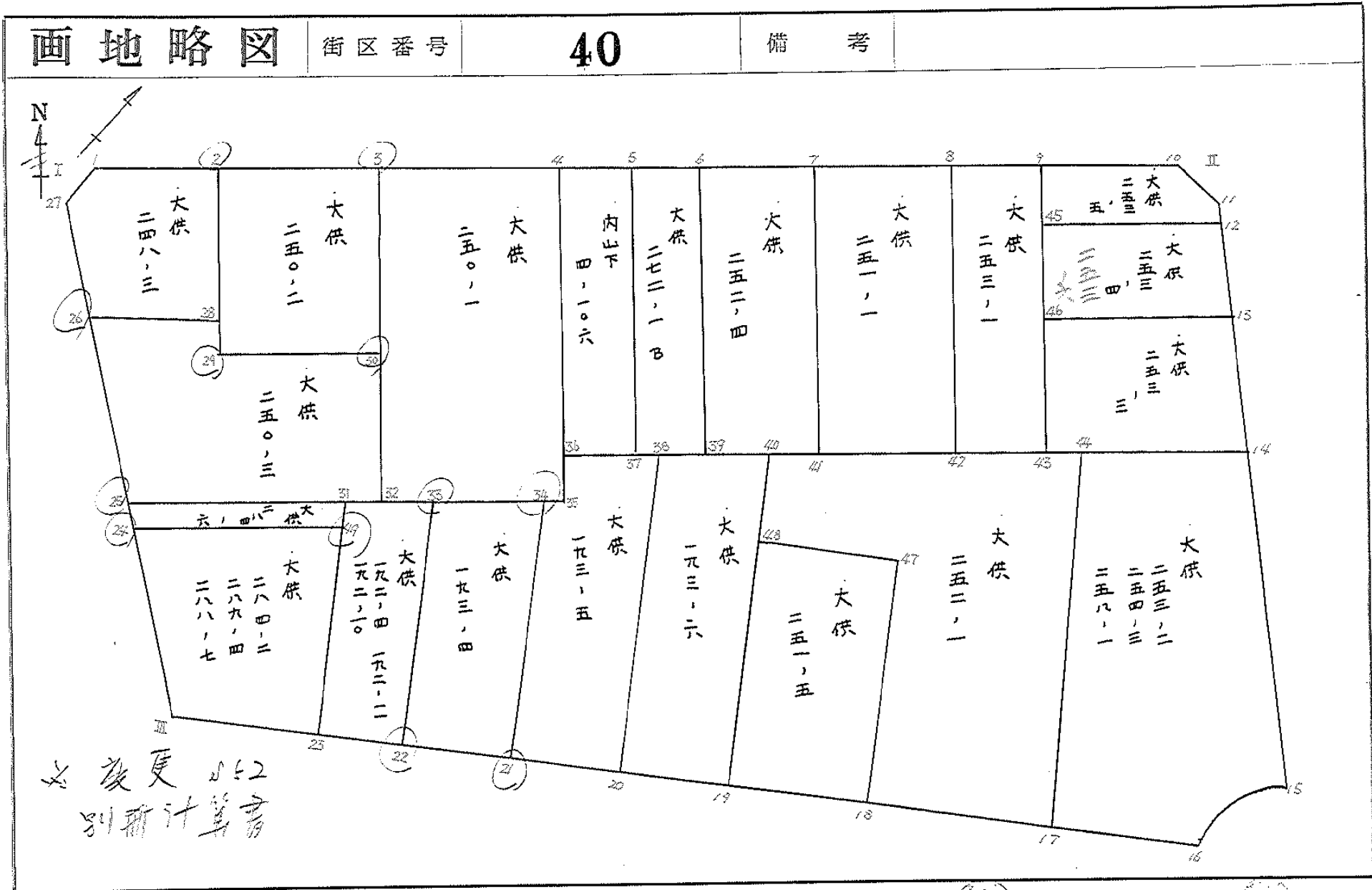


图略地画

街区番号

40

備考



記入者 _____ 点検者 _____

画地地積集計表

No. ✓

画地番号	画地地積	画地地積	摘 要
40- 2	4.411012	4.41	
40- 3	4.470481	4.47	
40- 4	133.750857	133.75	✓
40- 5	283.351700	283.35	✓
40- 6	192.530383	192.53	✓
40- 7	391.159008	391.15	✓
40- 8	134.941583	134.94	
40- 9	126.850522	126.85	
40- 10	212.029740	212.02	
40- 11	254.412702	254.41	
40- 12	168.697657	168.69	
40- 13	62.610463	62.61	
40- 14	112.318588	112.31	
40- 15	168.832485	168.83	
40- 16	489.753586	489.75	✓
40- 17	503.486698	503.48	✓
40- 18	223.226442	223.22	✓
40- 19	229.250377	229.25	
40- 20	212.138518	212.13	✓
40- 21	177.922833	177.92	✓
40- 22	133.602905	133.60	✓
40- 23	222.202884	222.20	✓
40- 24	33.433392	33.43	✓
GOKEI	4475.384820	4475.30	
40- 1	4475.410618	4475.41	

座標法面積計算 (DESCRIPTION OF APPLICATION)

(6-40 BLOCK) 1

測点 STA.NO	X (1)	Δx (2)	Y (3)	Δy (4)	(2) × (3)	(1) × (4)
交, I	-149712.264 ✓	92.923	-38009.945 ✓	16.197	-3531998.119235	-2424889.540008
交, II	-149639.286 ✓	46.859	-37953.456 ✓	99.697	-1778460.994704	-14918587.896342
15	-149665.405 ✓	-35.796	-37910.248 ✓	41.354	1357035.237408	-6189263.158370
16	-149675.082 ✓	-66.804	-37912.102 ✓	-59.405	2532680.062008	8391448.246210
交, III	-149732.209 ✓	-37.182	-37969.653 ✓	-97.843	1411787.637846	14650248.525187
					-8956.176677	8956.176677
					-4478.088338	4478.088338
					弓形面積	- 2.677720 ✓
						4475.410618 ✓

岡山調査測量株式会社

座標法面積計算 (DESCRIPTION OF APPLICATION)

隅切

(6-40 BLOCK)

2

測点 STA.NO	X (1)	Δx (2)	Y (3)	Δy (4)	(2) × (3)	(1) × (4)
27	-149713.595 ✓	-2.372	-38007.256 ✓	-1.836	90153.211232	274874.160420
交, 1	-149712.264 ✓	3.703	-38009.945 ✓	-0.853	-140750.826335	127704.561192
1	-149709.892 ✓	-1.331	-38008.109 ✓	2.689	50588.793079	-402569.899588
					-8.822024	8.822024
					-4.411012	4.411012

岡山調査測量株式会社

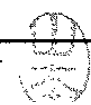


座標法面積計算 (DESCRIPTION OF APPLICATION)

隅切 (6-40 BLOCK) 3

測点 STA.NO	X (1)	Δx (2)	Y (3)	Δy (4)	(2) × (3)	(1) × (4)
10	-149641.659 ✓	1.552	-37955.292 ✓	-2.567	-58906.613184	384130.138653
交, II	-149639.286 ✓	.821	-37953.456 ✓	4.403	-31159.787376	-658861.776258
11	-149640.838 ✓	-2.373	-37950.889 ✓	-1.836	90057.459597	274740.578568
					-8.940963	8.940963
					-4.470481	4.470481

岡山調査測量株式会社



座標法面積計算 (DESCRIPTION OF APPLICATION) 内山下 4-106. (6-40 BLOCK) 8

測点 STA.NO	X (1)	Δx (2)	Y (3)	Δy (4)	(2) \times (3)	(1) \times (4)
4	-149680.788 ✓	18.578	-37985.581 ✓	-15.034	-705696.123818	2250300.966792
5	-149676.188 ✓	-9.394	-37982.020 ✓	22.129	356803.095880	-3312184.364252
37	-149690.182 ✓	-18.578	-37963.452 ✓	15.034	705285.011256	-2250442.196188
36	-149694.766 ✓	9.394	-37966.986 ✓	-22.129	-356661.866484	3312595.476814
					-269.883166	269.883166
					-134.941583	134.941583 ✓

岡山調査測量株式会社



座標法面積計算 (DESCRIPTION OF APPLICATION) 大供272-1B (6-40 BLOCK) 9

測点 STA.NO	X (1)	Δx (2)	Y (3)	Δy (4)	(2) × (3)	(1) × (4)
5.	-149676.188 ✓	18.307	-37982.020 ✓	-15.230	-695336.840140	2279568.343240
6.	-149671.875 ✓	-9.669	-37978.682 ✓	21.902	367215.876258	-3278113.406250
39.	-149685.857 ✓	-18.307	-37960.118 ✓	15.230	694935.880226	-2279715.602110
37.	-149690.182 ✓	9.669	-37963.452 ✓	-21.902	-367068.617388	3278514.366164
					-253.701044	253.701044
					-126.850522	126.850522

岡山調査測量株式会社



座標法面積計算 (DESCRIPTION OF APPLICATION) 大供252 - 4 . / (6-40 BLOCK) 10

測点 STA.NO	X (1)	Δx (2)	Y (3)	Δy (4)	(2) \times (3)	(1) \times (4)
6	-149671.875 ✓	21.221	-37978.682 ✓	-12.960	-805945.610722	1939747.500000
7	-149664.636 ✓	-6.774	-37973.078 ✓	24.120	257229.630372	-3609911.020320
41	-149678.649 ✓	-21.221	-37954.562 ✓	12.960	805433.760202	-1939335.291040
39	-149685.857 ✓	6.774	-37960.118 ✓	-24.120	-257141.839332	3610422.870840
					-424.059480	424.059480
					-212.029740	212.029740

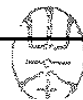
岡山調査測量株式会社



座標法面積計算 (DESCRIPTION OF APPLICATION) 大抵251 - 1. (BLOCK) 6-40 11

測点 STA.NO	X (1)	Δx (2)	Y (3)	Δy (4)	(2) \times (3)	(1) \times (4)
7.	-149664.636 ✓	22.670	-37973.078 ✓	-11.815	-860849.678260	1768287.674340
8.	-149655.979 ✓	-5.319	-37966.377 ✓	25.217	201943.159263	-3773874.822443
42.	-149669.955 ✓	-22.670	-37947.861 ✓	11.815	860278.008870	-1768350.518325
41.	-149678.649 ✓	5.319	-37954.562 ✓	-25.217	-201880.315278	3774446.491833
					-508.825405	508.825405
					-254.412702	254.412702 ✓

岡山調査測量株式会社



座標法面積計算 (DESCRIPTION OF APPLICATION) 大供253 - 1 (6-40 BLOCK) 12

測点 STA.NO	X (1)	Δx (2)	Y (3)	Δy (4)	(2) \times (3)	(1) \times (4)
8	-149655.979 ✓	19.723	-37966.377 ✓	-14.068	-748810.853571	2105360.312572
9	-149650.232 ✓	-8.209	-37961.929 ✓	22.962	311629.475161	-3436268.627184
43	-149664.188 ✓	-19.723	-37943.415 ✓	14.068	748357.974045	-2105475.796784
42	-149669.955 ✓	8.209	-37947.861 ✓	-22.962	-311513.990949	3436721.506710
					-337.395314	337.395314
					-168.697657	168.697657 ✓

岡山調査測量株式会社



座標法面積計算 (DESCRIPTION OF APPLICATION) 大供253-5 (6-40 BLOCK) 13

測点 STA.NO	X (1)	Δx (2)	Y (3)	Δy (4)	(2) \times (3)	(1) \times (4)
9	-149650.232	11.482	-37961.929	2.779	-435878.868778	-415877.994728
10	-149641.659	9.394	-37955.292	11.040	-356552.013048	-1652043.915360
11	-149640.838	-0.071	-37950.889	5.879	2694.513119	-879738.486602
12	-149641.730	-12.303	-37949.413	-7.132	466891.628139	1074726.904860
45	-149653.141	-8.502	-37958.071	-12.516	322719.519642	1873058.712756
					-125.220926	125.220926
					-62.610463	62.610463

岡山調査測量株式会社



座標法面積計算 (DESCRIPTION OF APPLICATION) 大供²⁵³⁻⁶253-4 (BLOCK) 6-40 14

測点 STA.NO	X (1)	Δx (2)	Y (3)	Δy (4)	(2) × (3)	(1) × (4)
12	-149641.730	7.433	-37949.413	15.238	-282077.986829	-2280240.681740
13	-149645.708	-15.997	-37942.833	-2.573	606971.499501	385038.406684
46	-149657.727	-7.433	-37951.986	-15.238	282097.111938	2280484.444026
45	-149653.141	15.997	-37958.071	2.573	-607215.261787	-385057.531793
					-224.637177	224.637177
					-112.318588	112.318588

岡山調査測量株式会社

座標法面積計算 (DESCRIPTION OF APPLICATION) 大供253-3-1 (6-40 BLOCK) 15

測点 STA.NO	X (1)	Δx (2)	Y (3)	Δy (4)	(2) × (3)	(1) × (4)
13	-149645.708 ✓	6.385	-37942.833 ✓	18.473	-242264.988705	-2764405.163884
14	-149651.342 ✓	-18.480	-37933.513 ✓	-.582	701011.320240	87097.081044
43	-149664.188 ✓	-6.385	-37943.415 ✓	-18.473	242268.704775	2764746.544924
46	-149657.727 ✓	18.480	-37951.986 ✓	.582	-701352.701280	-87100.797114
					-337.664970	337.664970
					-168.832485	168.832485 ✓

岡山調査測量株式会社



座標法面積計算 (DESCRIPTION OF APPLICATION) 大抵93 - 6. / (BLOCK) 6-40 19

測点 STA.NO	X (1)	Δx (2)	Y (3)	Δy (4)	(2) \times (3)	(1) \times (4)
19.	-149700.758 ✓	-25.126	-37937.969 ✓	12.817	953229.409094	-1918714.615286
20.	-149706.890 ✓	12.013	-37944.146 ✓	-24.376	-455823.025898	3649255.150640
38.	-149688.745 ✓	25.126	-37962.345 ✓	-12.817	-953841.880470	1918560.644665
40.	-149681.764 ✓	-12.013	-37956.963 ✓	24.376	455976.996519	-3648642.679264
					-458.500755	458.500755
					-229.250377	229.250377 ✓

岡山調査測量株式会社



座標法面積計算 (DESCRIPTION OF APPLICATION) 大供²⁵³⁻²/₂₅₄₋₃ (BLOCK) 5-40 16

測点 STA.NO	X (1)	Δx (2)	Y (3)	Δy (4)	(2) × (3)	(1) × (4)
14	-149651.342 ✓	-3.394	-37933.513 ✓	31.489	128746.343122	-4712371.108238
15	-149665.405 ✓	-23.740	-37910.248 ✓	21.411	899989.287520	-3204485.986455
16	-149675.082 ✓	-16.919	-37912.102 ✓	-9.150	641434.853738	1369527.000300
17	-149682.324 ✓	13.071	-37919.398 ✓	-29.635	-495644.451258	4435835.671740
44	-149662.011 ✓	30.982	-37941.737 ✓	-14.115	-1175510.895734	2112479.285265
			変		-984.862612	984.862612
					-492.431306	492.431306
					弓形面積	- 2.677720 ✓
						489.753586 ✓

岡山調査測量株式会社

面積計算書

工区 6

プロック 40

計算者

測量者

備考 197

地点	①	②	③	④	⑤	⑥	③ × ⑤	② × ⑥
	X	X-(定数) (-650.000)	X _{n-1} -X _{n+1}	Y	Y-(定数) (-910.000)	Y _{n-1} -Y _{n+1}		
大 15	665.405	15.405 -	23.740	910.248	0.248 +	21.411		
併 16	675.082	25.082 -	17.164	912.102	2.102 -	9.397		
三 17	682.569	32.569 +	12.795	919.645	9.645 -	29.848		
五 44	662.287	12.287 +	31.227	941.950	31.950 -	13.868		
五 14	651.342	1.342 -	3.118	933.513	23.513 +	31.702		
							1005830643 × 1/2	1005.830643
							= 502915821	
							5形面積 2.677720	
							500.238101	

座標法面積計算 (DESCRIPTION OF APPLICATION) 大供251-5. / (6-40 BLOCK) 18

測点 STA.NO	X (1)	Δx (2)	Y (3)	Δy (4)	(2) × (3)	(1) × (4)
18	-149692.858 ✓	-21.976	-37930.010 ✓	6.116	833549.899760	-915521.519528
19	-149700.758 ✓	6.175	-37937.969 ✓	-22.034	-234266.958575	3298506.501772
48	-149686.683 ✓	21.976	-37952.044 ✓	-6.116	-834034.118944	915483.753228
47	-149678.782 ✓	-6.175	-37944.085 ✓	22.034	234304.724875	-3298022.282588
					-446.452884	446.452884
					-223.226442	223.226442 ✓

変更

岡山調査測量株式会社

座標法面積計算 (DESCRIPTION OF APPLICATION) 大供252-1. / (

5-40 BLOCK) 17

測点 STA.NO	X (1)	Δx (2)	Y (3)	Δy (4)	(2) × (3)	(1) × (4)
17	-149682.324 ✓	-30.847	-37919.398 ✓	11.727	1169699.670106	-1755324.613548
18	-149692.858 ✓	3.542	-37930.010 ✓	-24.687	-134348.095420	3695467.585446
47	-149678.782 ✓	6.175	-37944.085 ✓	-22.034	-234304.724875	3298022.282588
48	-149686.683 ✓	-2.982	-37952.044 ✓	-12.878	113172.995208	1927665.103674
40	-149681.764 ✓	24.672	-37956.963 ✓	10.307	-996474.191136	-1542769.941548
44	-149662.011 ✓	-.560	-37941.737 ✓	37.565	21247.372720	-5622053.443215
			変 更		-1006.973397	1006.973397
					-503.486698	503.486698 ✓

岡山調査測量株式会社



面積計算書

工
区

6

ブ
ロ
ック

40

計
算
者

清算者

備
考
197

地 番 点	①	②	③	④	⑤	⑥	③	×	⑤	②	×	⑥
	X	X-(定数) (-670.000)	X _{n-1} -X _{n,1}	Y	Y-(定数) (-930.000)	Y _{n-1} -Y _{n,1}	+		-	+		-
大 俣 二 五 一 五	18 693.094	23.094 -	20.906	930.248	0.248 +	5.521						
	19 700.758	30.758 +	5.578	937.969	7.969 -	20.963						
	48 687.516	17.516 +	20.906	951.211	21.211 -	5.521						
	47 679.852	9.852 -	5.578	943.490	13.490 +	20.963						
							407,456,340	×	1/2			407,456,340
									=	203,728,170		
大 俣 二 五 二 一	17 682.569	(-600.000) 22.569 -	30.807	919.645	(-910.000) 9.645 +	11.702						
	18 693.094	33.094 +	2.717	930.248	20.248 -	23.845						
	47 679.852	19.852 +	5.578	943.490	33.490 -	20.963						
	48 687.516	27.516 -	1.912	951.211	41.211 -	13.473						
	40 681.764	21.764 +	25.229	956.963	46.963 +	9.261						
	44 662.287	2.287 -	0.805	941.950	31.950 +	37.318						
							1025,001,866	×	1/2			1025,001,866
									=	512,500,933		

座標法面積計算 (DESCRIPTION OF APPLICATION) 大橋13-5 (6-40 BLOCK) 20

測点 STA.NO	X (1)	Δx (2)	Y (3)	Δy (4)	(2) × (3)	(1) × (4)
20	-149706.890 ✓	-24.277	-37944.146 ✓	12.021	921170.032442	-1799626.524690
21	-149713.022 ✓	8.706	-37950.324 ✓	-20.881	-330395.520744	3126157.612382
34	-149698.184 ✓	16.072	-37965.027 ✓	-13.756	-610173.913944	2059248.219104
35	-149696.950 ✓	3.418	-37964.080 ✓	-1.959	-129761.225440	293256.325050
36	-149694.766 ✓	8.205	-37966.986 ✓	1.735	-311519.120130	-259720.419010
38	-149688.745 ✓	-12.124	-37962.345 ✓	22.840	460255.470780	-3418890.935800
					-424.277036	424.277036
					-212.138518	212.138518

欠

岡山調査測量株式会社



座標法面積計算 (DESCRIPTION OF APPLICATION) 大供250-1 ✓ (6-40 BLOCK) 7

測点 STA.NO	X (1)	Δx (2)	Y (3)	Δy (4)	(2) × (3)	(1) × (4)
3	-149692.187 ✓	27.776	-37994.404 ✓	-12.589	-1055332.565504	1884474.942143
4	-149680.788 ✓	-4.763	-37985.581 ✓	30.324	180925.322303	-4538920.215312
35	-149696.950 ✓	-27.776	-37964.080 ✓	12.589	1054490.286080	-1884534.903550
32	-149708.564 ✓	4.763	-37972.992 ✓	-30.324	-180865.360896	4539762.494736
					-782.318017	782.318017
					-391.159008	391.159008

敬

岡山調査測量株式会社

面積計算書

正
区

6

ブ
ロ
ック

40

計
画
書

積
算
者

備
考

197

地
番

大
保
一
八
三
一
五

大
保
二
五
〇
一

①

②

③

④

⑤

⑥

③

×

⑤

②

×

⑥

X

X - (定数)

X_{n-1} - X_{n,1}

Y

Y - (定数)

Y_{n-1} - Y_{n,1}

+

-

+

-

(-680.000)

(-940.000)

(-680.000)

(-960.000)

20	706.890	26.890 -	24.277	944.146	4.146 +	12.021				
21	713.022	33.022 +	8.711	950.324	10.324 -	20.885				
34	698.179	18.179 +	16.072	965.031	25.031 -	13.756				
35	696.950	16.950 +	3.413	964.080	24.080 -	1.955				
36	694.766	14.766 +	8.205	966.986	26.986 +	1.735				
38	688.745	8.745 -	12.124	962.345	22.345 +	22.840				

424.272544 × 1/2

424.272544

= 212.136272

3	692.284	12.284 +	27.750	994.480	34.480 -	12.537				
4	680.788	0.788 -	4.666	985.581	25.581 +	30.400				
35	696.950	16.950 -	27.750	964.080	4.080 +	12.537				
32	708.538	28.538 +	4.666	973.044	13.044 -	30.400				

785.102358 × 1/2

785.102358

= 392.551179

座標法面積計算 (DESCRIPTION OF APPLICATION)

大供²⁸⁴⁻²₂₈₉₋₄ : /
288-7

6-40 BLOCK) 23

測点 STA.NO	X (1)	Δx (2)	Y (3)	Δy (4)	(2) × (3)	(1) × (4)
23	-149724.050 /	-19.996	-37961.434 /	3.660	759076.834264	-547990.023000
交Ⅲ	-149732.209 /	-1.348	-37969.653 /	-21.978	51183.092244	3290814.489402
24	-149725.398 /	19.996	-37983.412 /	-3.660	-759516.306352	547994.956680
49	-149712.213 /	1.348	-37973.313 /	21.978	-51188.025924	-3290375.017314
					-444.405768	444.405768
					-222.202884	222.202884

複製

岡山調査測量株式会社

座標法面積計算 (DESCRIPTION OF APPLICATION)

大橋 284-6 ✓

6-40

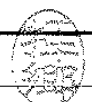
BLOCK

24

測点 STA.NO	X (1)	Δx (2)	Y (3)	Δy (4)	(2) × (3)	(1) × (4)
49	-149712.213 ✓	-14.585	-37973.313 ✓	-8.694	553840.770105	1301597.979822
24	-149725.398 ✓	-12.289	-37983.412 ✓	-11.910	466778.150068	1783229.490180
25	-149724.502 ✓	14.585	-37985.223 ✓	8.694	-554014.477455	-1301704.820388
31	-149710.813 ✓	12.289	-37974.718 ✓	11.910	-466671.309502	-1783055.782830
					-66.866784	66.866784
					-33.433392	33.433392

概

岡山調査測量株式会社



面積計算書

工区

6

ブロック

40

計算名

補正

積算名

備考 197

地番

大供
二六四二二
二六四二二
二六四二二
二六四二二

大供
二六四二六

点	① X	② X - (定数)	③ X _{n-1} - X _{n,1}	④ Y	⑤ Y - (定数)	⑥ Y _{n-1} - Y _{n,1}	⑦ +	×	⑧ -	⑨ +	×	⑩ -
Ⅲ	732.209	22.209	- 1.271	969.653	9.653	- 22.134						
24	725.321	15.321	+ 20.03P	983.568	23.568	- 3.704						
49	712.170	2.170	+ 1.271	973.357	13.357	+ 22.134						
23	724.050	14.050	- 20.03P	961.434	1.434	+ 3.704						
24	725.321	15.321	- 1.271	983.568	13.568	- 11.98P						
25	724.441	14.441	+ 14.556	985.346	15.346	+ 8.801						
31	710.765	0.765	+ 1.271	974.767	4.767	+ 11.98P						
49	712.170	2.170	- 14.556	973.357	3.357	- 8.801						

448 25/010
55 722862
4/2 = 25 861451

224 125505
25 861451

448 25/010 ✓

66 514813
4/2 = 23 257406

66 514813 ✓

座標法面積計算 (DESCRIPTION OF APPLICATION) 大抵 248 - 3. (6-40 BLOCK) 4

測点 STA.NO	X (1)	Δx (2)	Y (3)	Δy (4)	(2) \times (3)	(1) \times (4)
26.	-149717.706 ✓	-3.789	-37998.952 ✓	-14.745	143978.029128	2207587.574970
27.	-149713.595 ✓	7.314	-38007.256 ✓	-9.157	-296988.698384	1370927.389415
1.	-149709.892 ✓	11.274	-38008.109 ✓	5.008	-428503.420866	-749747.139136
2.	-149702.321 ✓	.086	-38002.248 ✓	15.598	-3268.193328	-2335056.802958
28.	-149709.806 ✓	-15.385	-37992.511 ✓	3.296	584514.781735	-493443.520576
					-267.501715	267.501715
					-133.750857	133.750857

計算

岡山調査測量株式会社



座標法面積計算 (DESCRIPTION OF APPLICATION) 大烘 250-3 (6-40 BLOCK) 5

測点 STA.NO	X (1)	Δx (2)	Y (3)	Δy (4)	(2) \times (3)	(1) \times (4)
25	-149724.502 ✓	-9.142	-37985.223 ✓	-25.960	347260.908666	3886848.071920
26	-149717.706 ✓	14.696	-37998.952 ✓	-7.288	-558432.598592	1091142.641328
28	-149709.806 ✓	6.242	-37992.511 ✓	8.599	-237149.253662	-1287354.621794
29	-149711.464 ✓	8.504	-37990.353 ✓	10.024	-323069.961912	-1500707.715136
30	-149701.302 ✓	2.900	-37982.487 ✓	17.361	-110149.212300	-2598964.304022
32	-149708.564 ✓	-23.200	-37972.992 ✓	-2.736	880973.414400	409602.631104
					-566.703400	566.703400
					-283.351700	283.351700 ✓

変

岡山調査測量株式会社

面積計算書

工区

6

ブロック

40

計算者

測量者

備考 197

地番	点	①	②	③	④	⑤	⑥	⑦	⑧	⑨	⑩	⑪	⑫
		X	X-(定数) (-700.000)	X _{n-1} -X _{n,1}	Y	Y-(定数) (-990.000)	Y _{n-1} -Y _{n,1}	+	×	+	-	+	-
大 塚 二 四 一 三	1	709.892	9.892+	11.107	1008.109	18.109+	4.878	✓		✓			
	2	702.488	2.488+	0.086	1002.378	12.378+	15.598	✓		✓			
	28	709.806	9.806-	15.285	992.511	2.511+	3.562		✓	✓			
	26	717.773	17.773-	3.789	998.816	8.816-	14.745		✓				✓
	27	713.595	13.595+	7.881	1007.256	17.256-	9.293	✓					✓
								266.411248 × 1/2				266.411248	
								= 133.205624					
大 塚 二 五 〇 三	26	717.773	17.773+	14.532	998.816	28.816-	7.245	✓					✓
	28	709.909	9.909+	6.279	992.591	22.591+	8.315	✓		✓			
	29	711.494	11.494+	8.619	990.501	20.501+	9.988	✓		✓			
	30	701.290	1.290+	2.956	982.603	12.603+	17.457	✓		✓			
	32	708.538	8.538-	23.151	973.044	3.044-	2.743		✓				✓
	25	724.441	24.441-	9.235	985.366	15.366-	25.772		✓				✓
								562.363634 × 1/2				562.363634	
								= 281.181817					

座標法面積計算 (DESCRIPTION OF APPLICATION) 大供250-2 (6-40 BLOCK) 6

測点 STA.NO	X (1)	Δx (2)	Y (3)	Δy (4)	(2) \times (3)	(1) \times (4)
2	-149702.321	19.277	-38002.248	-4.051	-732569.334696	606444.102371
3	-149692.187	1.019	-37994.404	19.761	-38716.297676	-2958067.307307
30	-149701.302	-19.277	-37982.487	4.051	732188.401899	-606439.974402
29	-149711.464	-1.019	-37990.353	-19.761	38712.169707	2958448.240104
					-385.060766	385.060766
					-192.530383	192.530383

変更

岡山調査測量株式会社



面積計算書

工
区

6

ブロック

40

計算者

情報者

備 197

地 番	点	①	②	③	④	⑤	⑥	③	×	⑤	②	×	⑥
		X	X-(定数) (-700.000)	X _{n-1} -X _{n-1}	Y	Y-(定数) (-990.000)	Y _{n-1} -Y _{n-1}	+	-	+	-		
大 供 ニ 四 ハ リ 三	1	709.892	9.892+	11.107	1,008,10.9	18.109+	4.878						
	2	702.488	2.488-	0.017	1,002.378	12.378+	15.518						
	28	709.909	9.909-	15.285	992.591	2.591+	3.562						
	26	717.773	17.773-	3.686	992.816	8.816-	14.665						
	27	713.595	13.595+	7.881	1,007.256	17.256-	9.293						
								264.82/562	× 1/2			264.82/562	
									= 132.410781				
大 供 ニ 五 〇 一 二	2	702.488	12.488+	19.210	1,002.378	22.378-	3.979						
	3	692.284	2.284+	1.198	994.480	14.480+	19.775						
	30	701.290	11.290-	19.210	982.603	2.603+	3.979						
	29	711.494	21.494-	1.198	990.501	10.501-	19.775						
								384.644592	× 1/2			384.644592	
									= 192.322296				

座標法面積計算 (DESCRIPTION OF APPLICATION) 大供 192-4 / (6-40 BLOCK) 22

測点 STA.NO	X (1)	Δx (2)	Y (3)	Δy (4)	(2) \times (3)	(1) \times (4)
22	-149719.154 ✓	-18.797	-37956.501 ✓	9.018	713468.349297	-1350167.330772
23	-149724.050 ✓	8.341	-37961.434 ✓	-18.217	-316636.320994	2727523.018850
31	-149710.813 ✓	18.797	-37974.718 ✓	-9.018	-713810.774246	1350092.111634
33	-149705.253 ✓	-8.341	-37970.452 ✓	18.217	316711.540132	-2727180.593901
					-267.205811	267.205811
					-133.602905	133.602905 ✓

校正

岡山調査測量株式会社

座標法面積計算 (DESCRIPTION OF APPLICATION) 大抵93-4 (6-40 BLOCK) 21

測点 STA.NO	X (1)	Δx (2)	Y (3)	Δy (4)	(2) × (3)	(1) × (4)
21	-149713.022	-20.970	-37950.324	8.526	795818.294280	-1276453.225572
22	-149719.154	7.769	-37956.501	-20.128	-294884.056269	3013547.131712
33	-149705.253	20.970	-37970.452	-8.526	-796240.378440	1276386.987078
34	-149698.184	-7.769	-37965.027	20.128	294950.294763	-3013125.047552
					-355.345666	355.345666
					-177.922833	177.922833

変更

岡山調査測量株式会社

面積計算書

工区

6

ブロック

40

計算者

精算者

備考 197

地点	①	②	③	④	⑤	⑥	⑦	⑧	⑨	⑩	
	X	X - (定数) (-700.000)	X _{n-1} - X _{n,1}	Y	Y - (定数) (-950.000)	Y _{n-1} - Y _{n,1}	+	×	-	+	-
大 40/122	719.154	19.154 -	18.826 -	956.501	6.501 +	9.047					
大 40/123	724.050	24.050 +	8.389 -	961.434	11.434 -	18.266					
大 49/131	710.765	10.765 +	18.826 -	974.767	24.767 -	9.047					
大 40/133	705.224	5.224 -	8.389 -	970.481	20.481 +	18.266					
							267,980,433			267,980,433	
							$\times \frac{1}{2} = 133,990,216$			\checkmark	
		(-690.000)			(-950.000)						
大 21	713.022	23.022 -	20.975 -	950.324	0.324 +	8.530					
大 22	719.154	29.154 +	7.798 -	956.501	6.501 -	20.157					
大 33	705.224	15.224 +	20.975 -	970.481	20.481 -	8.530					
大 34	698.179	8.179 -	7.798 -	965.031	15.031 +	20.157					
							356,276,135 $\times \frac{1}{2}$			356,276,135	
							= 178,138,067				