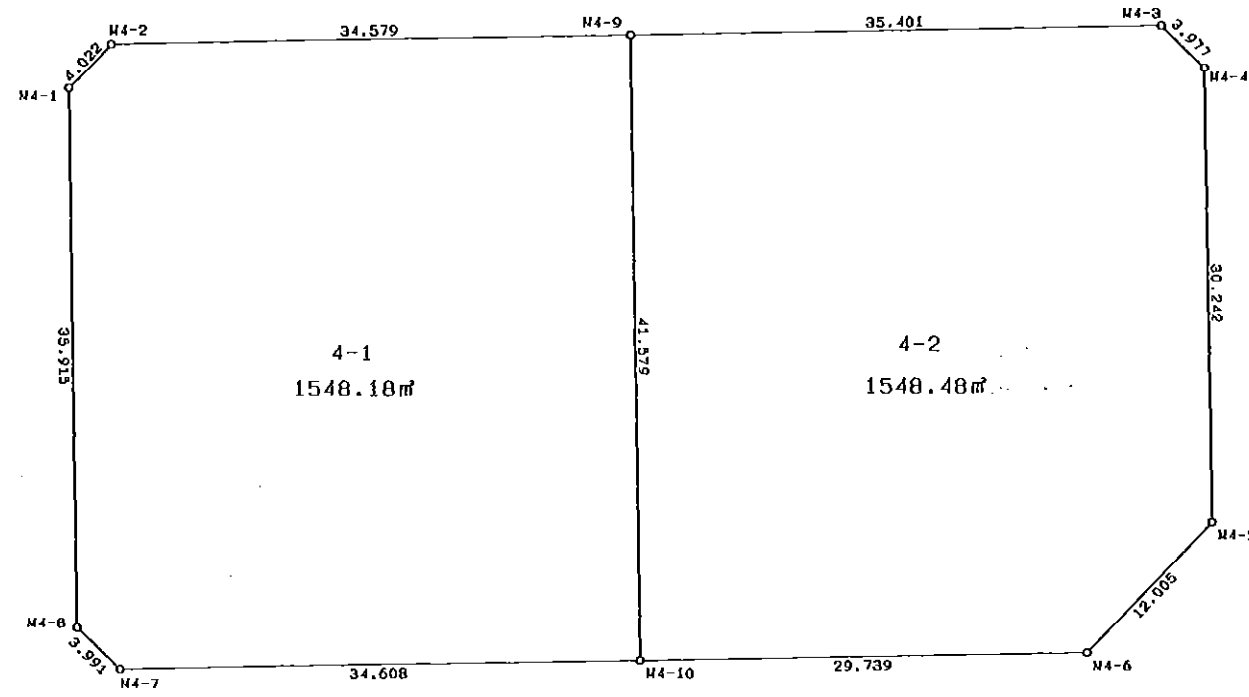
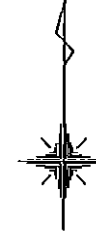


4 街区



S=1:500

* * 面積計算 (座標法) * *

地 器械点	番 : 4 視準点	内角	方向角	距離	[1] X(i)	[2] Y(i)	[3] X(i+1)-X(i-1)	[2]*[3]
M4-1	M4-8	135-05-28	178-55-58	35.915	-148517.379	-37895.036	-38.810	1470706.347160
M4-8	M4-7	134-52-46	133-48-44	3.991	-148553.288	-37894.367	-38.672	1465450.960624
M4-7	M4-10	135-06-24	88-55-08	34.608	-148556.051	-37891.487	-2.110	79951.037570
M4-10	M4-6	180-01-52	88-57-00	29.739	-148555.398	-37856.885	1.198	-45352.548230
M4-6	M4-5	134-45-02	43-42-02	12.005	-148554.853	-37827.151	9.224	-348917.640824
M4-5	M4-4	135-12-57	358-54-59	30.242	-148546.174	-37818.857	38.916	-1471758.639012
M4-4	M4-3	135-14-54	314-09-53	3.977	-148515.937	-37819.429	33.008	-1248343.712432
M4-3	M4-9	134-45-55	268-55-48	35.401	-148513.166	-37822.282	2.110	-79805.015020
M4-9	M4-2	179-59-29	268-55-17	34.579	-148513.827	-37857.677	-1.312	49669.272224
M4-2	M4-1	134-55-13	223-50-30	4.022	-148514.478	-37892.250	-3.552	134593.272000
							倍面積	6193.334060
							面積	3096.667030

* * 面積計算 (座標法) * *

地 器械点	番 : 視準点	4-1 内角	方向角	距離	[1] X(i)	[2] Y(i)	[3] X(i+1)-X(i-1)	[2]*[3]
M4-1	M4-8	135-05-28	178-55-58	35.915	-148517.379	-37895.036	-38.810	1470706.347160
M4-8	M4-7	134-52-46	133-48-44	3.991	-148553.288	-37894.367	-38.672	1465450.960624
M4-7	M4-10	135-06-24	88-55-08	34.608	-148556.051	-37891.487	-2.110	79951.037570
M4-10	M4-9	89-59-23	358-54-31	41.579	-148555.398	-37856.885	42.224	-1598469.112240
M4-9	M4-2	90-00-46	268-55-17	34.579	-148513.827	-37857.677	40.920	-1549136.142840
M4-2	M4-1	134-55-13	223-50-30	4.022	-148514.478	-37892.250	-3.552	134593.272000
							倍面積	3096.362274
							面積	1548.181137

* * 面積計算 (座標法) * *

地 器械点	番 : 視準点	4-2 内角	方向角	距離	[1] X(i)	[2] Y(i)	[3] X(i+1)-X(i-1)	[2]*[3]
M4-9	M4-10	89-58-43	178-54-31	41.579	-148513.827	-37857.677	-42.232	1598805.415064
M4-10	M4-6	90-02-29	88-57-00	29.739	-148555.398	-37856.885	-41.026	1553116.564010
M4-6	M4-5	134-45-02	43-42-02	12.005	-148554.853	-37827.151	9.224	-348917.640824
M4-5	M4-4	135-12-57	358-54-59	30.242	-148546.174	-37818.857	38.916	-1471758.639012
M4-4	M4-3	135-14-54	314-09-53	3.977	-148515.937	-37819.429	33.008	-1248343.712432
M4-3	M4-9	134-45-55	268-55-48	35.401	-148513.166	-37822.282	2.110	-79805.015020
							倍面積	3096.971786
							面積	1548.485893