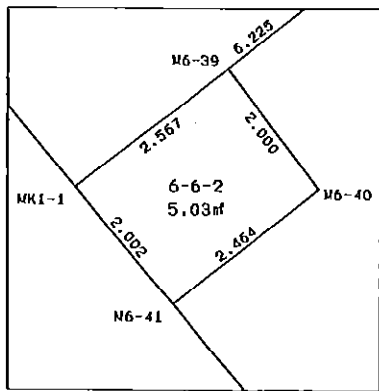
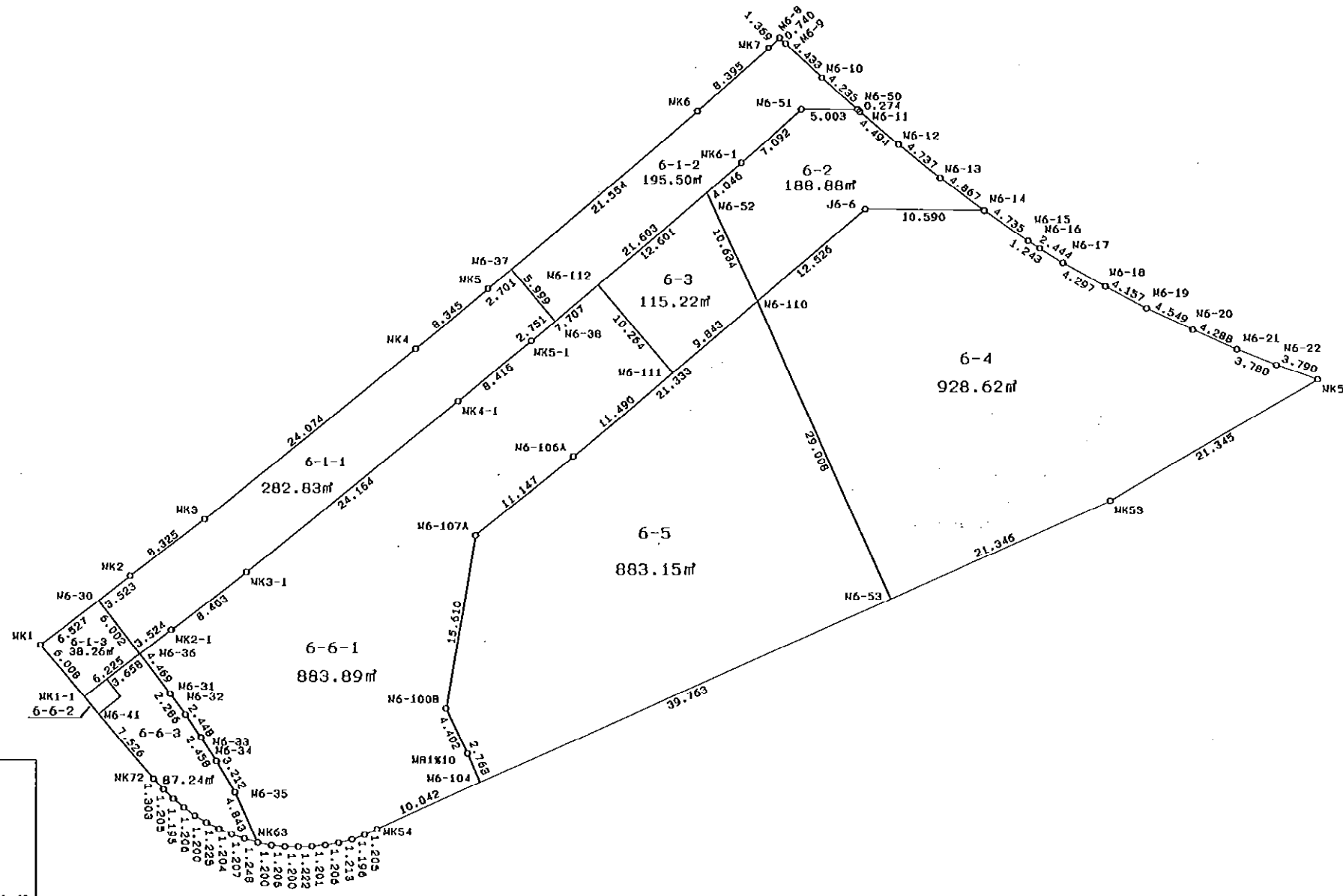
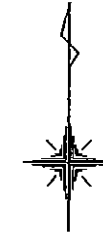


6 街区



S=1:500

* * 面積計算 (座標法) * *

地 器械点	番 : 6 視準点	内角	方向角	距離	[1] X(i)	[2] Y(i)	[3] X(i+1)-X(i-1)	[2]*[3]
MK1	MK72	87-05-13	139-30-49	15.536	-148613.838	-38071.846	-17.944	683161.204624
MK72	MK71	176-36-22	136-07-11	1.303	-148625.654	-38061.759	-12.755	485477.736045
MK71	MK70	177-20-02	133-27-13	1.205	-148626.593	-38060.856	-1.768	67291.593408
MK70	MK69	175-07-26	128-34-39	1.195	-148627.422	-38059.981	-1.574	59906.410094
MK69	MK68	177-35-22	126-10-01	1.206	-148628.167	-38059.047	-1.457	55452.031479
MK68	MK67	174-13-25	120-23-26	1.200	-148628.879	-38058.073	-1.319	50198.598287
MK67	MK66	175-55-25	116-18-51	1.225	-148629.486	-38057.038	-1.150	43765.593700
MK66	MK65	175-50-27	112-09-18	1.204	-148630.029	-38055.940	-0.997	37941.772180
MK65	MK64	176-24-00	108-33-18	1.207	-148630.483	-38054.825	-0.838	31889.943350
MK64	MK63	177-03-45	105-37-03	1.248	-148630.867	-38053.681	-0.720	27398.650320
MK63	MK62	176-27-38	102-04-41	1.200	-148631.203	-38052.479	-0.587	22336.805173
MK62	MK61	172-55-06	94-59-47	1.206	-148631.454	-38051.306	-0.356	13546.264936
MK61	MK60	175-43-11	90-42-58	1.200	-148631.559	-38050.105	-0.120	4566.012600
MK60	MK59	177-24-27	88-07-25	1.222	-148631.574	-38048.905	0.025	-951.222625
MK59	MK58	176-19-55	84-27-20	1.201	-148631.534	-38047.684	0.156	-5935.438704
MK58	MK57	176-11-29	80-38-49	1.206	-148631.418	-38046.489	0.312	-11870.504568
MK57	MK56	175-13-31	75-52-20	1.213	-148631.222	-38045.299	0.492	-18718.287108
MK56	MK55	172-50-33	68-42-53	1.196	-148630.926	-38044.123	0.730	-27772.209790
MK55	MK54	177-39-21	66-22-14	1.205	-148630.492	-38043.009	0.917	-34885.439253
MK54	MK53	179-31-18	65-53-32	71.151	-148630.009	-38041.905	29.545	-1123948.083225
MK53	MK52	173-40-06	59-33-38	21.345	-148600.947	-37976.960	39.876	-1514369.256960
MK52	M6-22	49-40-57	289-14-35	3.790	-148590.133	-37958.557	12.063	-457894.073091
M6-22	M6-21	182-36-43	291-51-18	3.780	-148588.884	-37962.135	2.656	-100827.430560
M6-21	M6-20	182-13-46	294-05-04	4.288	-148587.477	-37965.643	3.157	-119857.534951
M6-20	M6-19	180-23-04	294-28-08	4.549	-148585.727	-37969.558	3.634	-137981.373772
M6-19	M6-18	182-59-24	297-27-32	4.157	-148583.843	-37973.698	3.801	-144338.026098
M6-18	M6-17	182-07-08	299-34-40	4.297	-148581.926	-37977.387	4.038	-153352.688706
M6-17	M6-16	182-02-15	301-36-55	2.444	-148579.805	-37981.124	3.402	-129211.783848
M6-16	M6-15	181-32-17	303-09-12	1.243	-148578.524	-37983.205	1.961	-74485.065005
M6-15	M6-14	181-06-50	304-16-02	4.735	-148577.844	-37984.246	3.346	-127095.287116
M6-14	M6-13	181-56-28	306-12-30	4.867	-148575.178	-37988.159	5.541	-210492.389019
M6-13	M6-12	182-09-24	308-21-54	4.737	-148572.303	-37992.086	5.815	-220923.980090
M6-12	M6-11	181-45-38	310-07-32	4.494	-148569.363	-37995.800	5.836	-221743.488800
M6-11	M6-10	181-24-47	311-32-19	4.509	-148566.467	-37999.236	5.886	-223663.503096
M6-10	M6-9	181-23-11	312-55-30	4.433	-148563.477	-38002.611	6.009	-228357.689499
M6-9	M6-8	181-21-49	314-17-19	0.740	-148560.458	-38005.857	3.536	-134388.710352
M6-8	MK7	92-48-46	227-06-05	1.369	-148559.941	-38006.387	-0.415	15772.650605
MK7	MK6	181-32-24	228-38-29	8.395	-148560.873	-38007.390	-6.479	246249.879810
MK6	MK5	180-58-55	229-37-24	24.256	-148566.420	-38013.691	-21.260	808171.070660
MK5	MK4	180-46-43	230-24-07	8.345	-148582.133	-38032.169	-21.032	799892.578408
MK4	MK3	180-32-03	230-56-10	24.074	-148587.452	-38038.599	-20.490	779410.893510
MK3	MK2	181-23-54	232-20-04	8.325	-148602.623	-38057.291	-20.258	770964.601078
MK2	MK1	180-05-32	232-25-36	10.050	-148607.710	-38063.881	-11.215	426886.425415
							倍面積	7217.249446
							面積	3608.624723

* * 面積計算 (座標法) * *

地 器械点	番 : 6-1-1 視準点	内角	方向角	距離	[1] X(i)	[2] Y(i)	[3] X(i+1)-X(i-1)	[2]*[3]
M6-37	MK5	89-59-59	229-37-27	2.701	-148580.383	-38030.111	2.820	-107244.913020
MK5	MK4	180-46-40	230-24-07	8.345	-148582.133	-38032.169	-7.069	268849.402661
MK4	MK3	180-32-03	230-56-10	24.074	-148587.452	-38038.599	-20.490	779410.893510
MK3	MK2	181-23-54	232-20-04	8.325	-148602.623	-38057.291	-20.258	770964.601078
MK2	M6-30	180-05-35	232-25-39	3.523	-148607.710	-38063.881	-7.235	275392.179035
M6-30	M6-36	89-57-49	142-23-28	6.002	-148609.858	-38066.673	-6.903	262774.243719
M6-36	MK2-1	90-04-09	52-27-37	3.524	-148614.613	-38063.010	-2.608	99268.330080
MK2-1	MK3-1	179-52-44	52-20-21	8.403	-148612.466	-38060.216	7.281	-277116.432696
MK3-1	MK4-1	178-35-36	50-55-57	24.164	-148607.332	-38053.564	20.363	-774884.723732
MK4-1	MK5-1	179-26-17	50-22-14	8.416	-148592.103	-38034.803	20.597	-783402.837391
MK5-1	M6-38	179-15-31	49-37-45	2.751	-148586.735	-38028.321	7.150	-271902.495150
M6-38	M6-37	89-59-43	319-37-28	5.999	-148584.953	-38026.225	6.352	-241542.581200
							倍面積	565.666894
							面積	282.833447

* * 面積計算 (座標法) * *

地 器械点	番 : 6-1-2 視準点	内角	方向角	距離	[1] X(i)	[2] Y(i)	[3] X(i+1)-X(i-1)	[2]*[3]
M6-38	MK6-1	90-00-19	49-37-47	21.603	-148584.953	-38026.225	9.423	-358321.118175
MK6-1	M6-51	179-00-02	48-37-49	7.092	-148570.960	-38009.766	18.680	-710022.428880
M6-51	M6-50	221-30-26	90-08-15	5.003	-148566.273	-38004.444	4.675	-177670.775700
M6-50	M6-10	41-23-50	311-32-05	4.235	-148566.285	-37999.441	2.796	-106246.437036
M6-10	M6-9	181-23-25	312-55-30	4.433	-148563.477	-38002.611	5.827	-221441.214297
M6-9	M6-8	181-21-49	314-17-19	0.740	-148560.458	-38005.857	3.536	-134388.710352
M6-8	MK7	92-48-46	227-06-05	1.369	-148559.941	-38006.387	-0.415	15772.650605
MK7	MK6	181-32-24	228-38-29	8.395	-148560.873	-38007.390	-6.479	246249.879810
MK6	M6-37	180-58-55	229-37-24	21.554	-148566.420	-38013.691	-19.510	741647.111410
M6-37	M6-38	90-00-04	139-37-28	5.999	-148580.383	-38030.111	-18.533	704812.047163
							倍面積	391.004548
							面積	195.502274

* * 面積計算 (座標法) * *

地 器械点	番 : 6-1-3 視準点	内角	方向角	距離	[1] X(i)	[2] Y(i)	[3] X(i+1)-X(i-1)	[2]*[3]
MK1	MK1-1	87-05-00	139-30-34	6.008	-148613.838	-38071.846	-8.549	325476.211454
MK1-1	M6-36	92-56-16	52-26-50	6.225	-148618.407	-38067.945	-0.775	29502.657375
M6-36	M6-30	89-56-38	322-23-28	6.002	-148614.613	-38063.010	8.549	-325400.672490
M6-30	MK1	90-02-06	232-25-34	6.527	-148609.858	-38066.673	0.775	-29501.671575
							倍面積	76.524764
							面積	38.262382

* * 面積計算 (座標法) * *

地 器械点	番 : 視準点	6-2 内角	方向角	距離	[1] X(i)	[2] Y(i)	[3] X(i+1)-X(i-1)	[2]*[3]
M6-110	J6-6	75-00-22	49-40-21	12.526	-148583.192	-38008.298	-1.505	57202.488490
J6-6	M6-14	220-49-31	90-29-52	10.590	-148575.086	-37998.749	8.014	-304521.974486
M6-14	M6-13	35-42-38	306-12-30	4.867	-148575.178	-37988.159	2.783	-105721.046497
M6-13	M6-12	182-09-24	308-21-54	4.737	-148572.303	-37992.086	5.815	-220923.980090
M6-12	M6-11	181-45-38	310-07-32	4.494	-148569.363	-37995.800	5.836	-221743.488800
M6-11	M6-50	181-28-24	311-35-56	0.274	-148566.467	-37999.236	3.078	-116961.648408
M6-50	M6-51	138-32-19	270-08-15	5.003	-148566.285	-37999.441	0.194	-7371.891554
M6-51	MK6-1	138-29-34	228-37-49	7.092	-148566.273	-38004.444	-4.675	177670.775700
MK6-1	M6-52	180-59-28	229-37-17	4.046	-148570.960	-38009.766	-7.308	277775.369928
M6-52	M6-110	105-02-42	154-39-59	10.634	-148573.581	-38012.848	-12.232	464973.156736
							倍面積	377.761019
							面積	188.880510

* * 面積計算 (座標法) * *

地 器械点	番 : 視準点	6-3 内角	方向角	距離	[1] X(i)	[2] Y(i)	[3] X(i+1)-X(i-1)	[2]*[3]
M6-111	M6-110	90-02-00	49-39-52	9.843	-148589.563	-38015.801	-1.449	55084.895649
M6-110	M6-52	105-00-07	334-39-59	10.634	-148583.192	-38008.298	15.982	-607448.618636
M6-52	M6-112	74-57-54	229-37-53	12.601	-148573.581	-38012.848	1.449	-55080.616752
M6-112	M6-111	89-59-59	139-37-52	10.264	-148581.743	-38022.449	-15.982	607674.779918
							倍面積	230.440179
							面積	115.220090

* * 面積計算 (座標法) * *

地 器械点	番 : 視準点	6-4 内角	方向角	距離	[1] X(i)	[2] Y(i)	[3] X(i+1)-X(i-1)	[2]*[3]
M6-53	MK53	90-00-33	65-53-21	21.346	-148609.667	-37996.444	-17.755	674626.863220
MK53	MK52	173-40-17	59-33-38	21.345	-148600.947	-37976.960	19.534	-741841.936640
MK52	M6-22	49-40-57	289-14-35	3.790	-148590.133	-37958.557	12.063	-457894.073091
M6-22	M6-21	182-36-43	291-51-18	3.780	-148588.884	-37962.135	2.656	-100827.430560
M6-21	M6-20	182-13-46	294-05-04	4.288	-148587.477	-37965.643	3.157	-119857.534951
M6-20	M6-19	180-23-04	294-28-08	4.549	-148585.727	-37969.558	3.634	-137981.373772
M6-19	M6-18	182-59-24	297-27-32	4.157	-148583.843	-37973.698	3.801	-144338.026098
M6-18	M6-17	182-07-08	299-34-40	4.297	-148581.926	-37977.387	4.038	-153352.688706
M6-17	M6-16	182-02-15	301-36-55	2.444	-148579.805	-37981.124	3.402	-129211.783848
M6-16	M6-15	181-32-17	303-09-12	1.243	-148578.524	-37983.205	1.961	-74485.065005
M6-15	M6-14	181-06-50	304-16-02	4.735	-148577.844	-37984.246	3.346	-127095.287116
M6-14	J6-6	146-13-50	270-29-52	10.590	-148575.178	-37988.159	2.758	-104771.342522
J6-6	M6-110	139-10-29	229-40-21	12.526	-148575.086	-37998.749	-8.014	304521.974486
M6-110	M6-53	106-12-27	155-52-48	29.008	-148583.192	-38008.298	-34.581	1314364.953138
							倍面積	1857.248535
							面積	928.624268

* * 面積計算 (座標法) * *

地番 : 6-5

器械点	視準点	内角	方向角	距離	[1] X(i)	[2] Y(i)	[3] X(i+1)-X(i-1)	[2]*[3]
M6-110	M6-106A	73-47-15	229-40-03	21.333	-148583.192	-38008.298	12.668	-481489.119064
M6-106A	M6-107A	181-13-38	230-53-41	11.147	-148596.999	-38024.560	-20.838	792355.781280
M6-107A	M6-100B	138-37-08	189-30-49	15.610	-148604.030	-38033.210	-22.426	852932.767460
M6-100B	MR1-10	144-18-41	153-49-30	4.402	-148619.425	-38035.790	-19.346	735840.393340
MR1-10	M6-104	182-30-49	156-20-19	2.763	-148623.376	-38033.848	-6.482	246535.402736
M6-104	M6-53	89-33-20	65-53-39	39.763	-148625.907	-38032.739	13.709	-521390.818951
M6-53	M6-110	89-59-09	335-52-48	29.008	-148609.667	-37996.444	42.715	-1623018.105460
							倍面積	1766.301341
							面積	883.150671

* * 面積計算 (座標法) * *

地番 : 6-1-1

器械点	視準点	内角	方向角	距離	[1] X(i)	[2] Y(i)	[3] X(i+1)-X(i-1)	[2]*[3]
M6-37	MK5	89-59-59	229-37-27	2.701	-148580.383	-38030.111	2.820	-107244.913020
MK5	MK4	180-46-40	230-24-07	8.345	-148582.133	-38032.169	-7.069	268849.402661
MK4	MK3	180-32-03	230-56-10	24.074	-148587.452	-38038.599	-20.490	779410.893510
MK3	MK2	181-23-54	232-20-04	8.325	-148602.623	-38057.291	-20.258	770964.601078
MK2	M6-30	180-05-35	232-25-39	3.523	-148607.710	-38063.881	-7.235	275392.179035
M6-30	M6-36	89-57-49	142-23-28	6.002	-148609.858	-38066.673	-6.903	262774.243719
M6-36	MK2-1	90-04-09	52-27-37	3.524	-148614.613	-38063.010	-2.608	99268.330080
MK2-1	MK3-1	179-52-44	52-20-21	8.403	-148612.466	-38060.216	7.281	-277116.432696
MK3-1	MK4-1	178-35-36	50-55-57	24.164	-148607.332	-38053.564	20.363	-774884.723732
MK4-1	MK5-1	179-26-17	50-22-14	8.416	-148592.103	-38034.803	20.597	-783402.837391
MK5-1	M6-38	179-15-31	49-37-45	2.751	-148586.735	-38028.321	7.150	-271902.495150
M6-38	M6-37	89-59-43	319-37-28	5.999	-148584.953	-38026.225	6.352	-241542.581200
							倍面積	565.666894
							面積	282.833447

* * 面積計算 (座標法) * *

地 器械点	番 : 6-6-2 視準点	内角	方向角	距離	[1] X(i)	[2] Y(i)	[3] X(i+1)-X(i-1)	[2]*[3]
M6-39	MK1-1	90-00-06	232-27-21	2.567	-148616.843	-38065.910	0.022	-837.450020
MK1-1	M6-41	87-03-39	139-31-00	2.002	-148618.407	-38067.945	-3.087	117515.746215
M6-41	M6-40	92-57-11	52-28-11	2.464	-148619.930	-38066.645	-0.022	837.466190
M6-40	M6-39	89-59-04	322-27-15	2.000	-148618.429	-38064.691	3.087	-117505.701117
							倍面積	10.061268
							面積	5.030634

* * 面積計算 (座標法) * *

地 器械点	番 : 6-6-3 視準点	内角	方向角	距離	[1] X(i)	[2] Y(i)	[3] X(i+1)-X(i-1)	[2]*[3]
M6-39	M6-40	90-00-48	142-27-15	2.000	-148616.843	-38065.910	-3.816	145259.512560
M6-40	M6-41	270-00-56	232-28-11	2.464	-148618.429	-38064.691	-3.087	117505.701117
M6-41	MK72	87-02-46	139-30-57	7.526	-148619.930	-38066.645	-7.225	275031.510125
MK72	MK71	176-36-14	136-07-11	1.303	-148625.654	-38061.759	-6.663	253605.500217
MK71	MK70	177-20-02	133-27-13	1.205	-148626.593	-38060.856	-1.768	67291.593408
MK70	MK69	175-07-26	128-34-39	1.195	-148627.422	-38059.981	-1.574	59906.410094
MK69	MK68	177-35-22	126-10-01	1.206	-148628.167	-38059.047	-1.457	55452.031479
MK68	MK67	174-13-25	120-23-26	1.200	-148628.879	-38058.073	-1.319	50198.598287
MK67	MK66	175-55-25	116-18-51	1.225	-148629.486	-38057.038	-1.150	43765.593700
MK66	MK65	175-50-27	112-09-18	1.204	-148630.029	-38055.940	-0.997	37941.772180
MK65	MK64	176-24-00	108-33-18	1.207	-148630.483	-38054.825	-0.838	31889.943350
MK64	MK63	177-03-45	105-37-03	1.248	-148630.867	-38053.681	-0.720	27398.650320
MK63	M6-35	49-15-05	334-52-08	4.843	-148631.203	-38052.479	4.049	-154074.487471
M6-35	M6-34	174-07-06	328-59-14	3.212	-148626.818	-38054.536	7.138	-271633.277968
M6-34	M6-33	178-12-07	327-11-21	2.458	-148624.065	-38056.191	4.819	-183392.784429
M6-33	M6-32	177-38-26	324-49-47	2.448	-148621.999	-38057.523	4.067	-154779.946041
M6-32	M6-31	178-58-37	323-48-24	2.286	-148619.998	-38058.933	3.846	-146374.656318
M6-31	M6-36	178-35-06	322-23-30	4.469	-148618.153	-38060.283	5.385	-204954.623955
M6-36	M6-39	90-02-57	232-26-27	3.658	-148614.613	-38063.010	1.310	-49862.543100
							倍面積	174.497555
							面積	87.248778