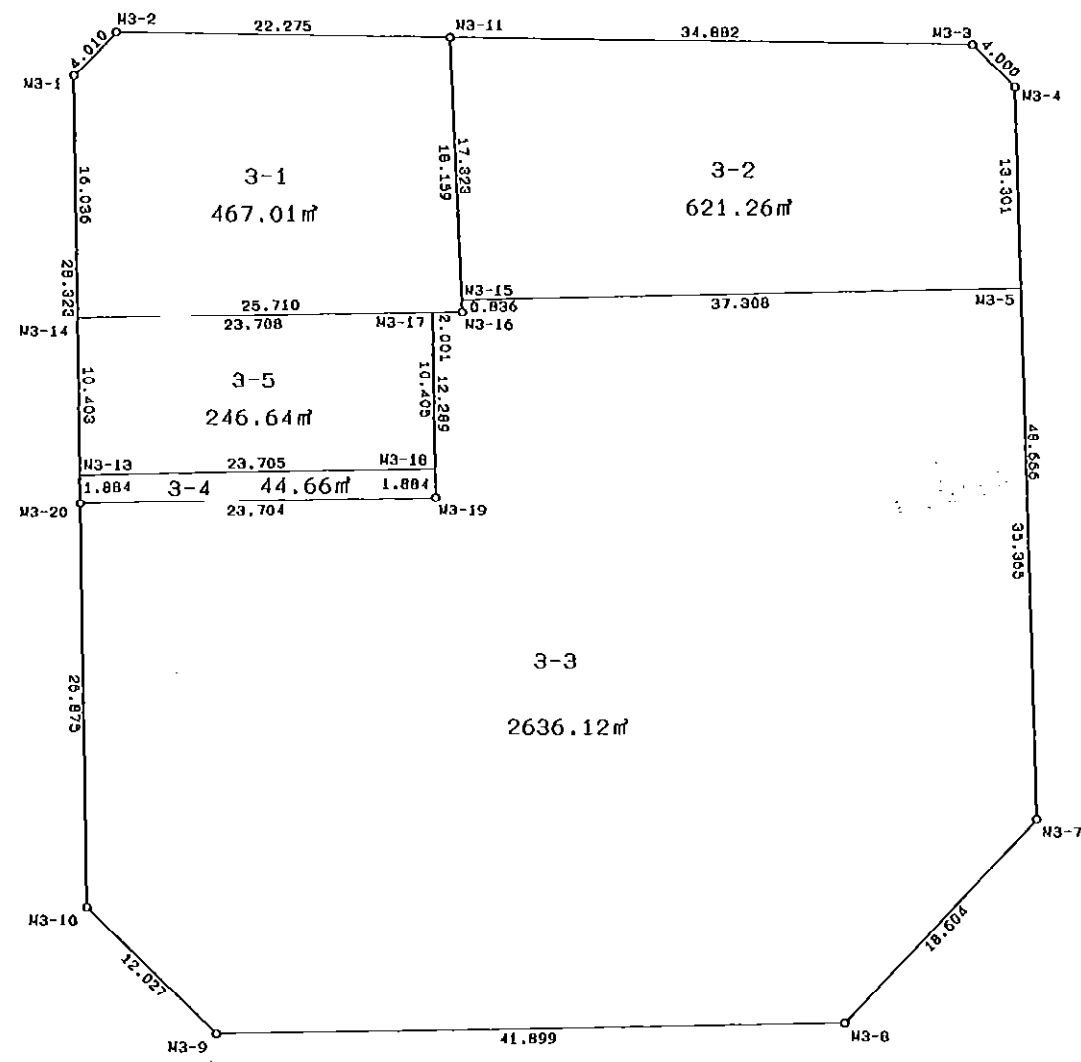


3 街区



S=1: 500

* * 面積計算 (座標法) * *

地 器械点	番 : 3 視準点	内角	方向角	距離	[1] X(i)	[2] Y(i)	[3] X(i+1)-X(i-1)	[2]*[3]
M3-1	M3-20	134-17-36	178-52-45	28.323	-148494.935	-37803.847	-31.174	1178497.126378
M3-20	M3-10	180-00-59	178-53-44	26.875	-148523.253	-37803.293	-55.188	2086288.134084
M3-10	M3-9	135-02-24	133-56-08	12.027	-148550.123	-37802.775	-35.215	1331224.721625
M3-9	M3-8	134-56-25	88-52-33	41.899	-148558.468	-37794.114	-7.523	284325.119622
M3-8	M3-7	134-38-43	43-31-16	18.604	-148557.646	-37752.223	14.312	-540309.815576
M3-7	M3-4	134-35-58	358-07-14	48.666	-148544.156	-37739.412	62.130	-2344749.667560
M3-4	M3-3	136-00-30	314-07-44	4.000	-148495.516	-37741.008	51.425	-1940831.336400
M3-3	M3-11	136-30-24	270-38-08	34.882	-148492.731	-37743.879	3.172	-119723.584188
M3-11	M3-2	180-02-46	270-40-54	22.275	-148492.344	-37778.759	0.652	-24631.750868
M3-2	M3-1	133-54-15	224-35-09	4.010	-148492.079	-37801.032	-2.591	97942.473912
							倍面積	8031.421029
							面積	4015.710515

* * 面積計算 (座標法) * *

地 器械点	番 : 3-1 視準点	内角	方向角	距離	[1] X(i)	[2] Y(i)	[3] X(i+1)-X(i-1)	[2]*[3]
M3-1	M3-14	134-17-32	178-52-41	16.036	-148494.935	-37803.847	-18.889	714076.865983
M3-14	M3-16	90-01-56	88-54-37	25.710	-148510.968	-37803.533	-15.544	587618.116952
M3-16	M3-11	88-09-03	357-03-40	18.159	-148510.479	-37777.828	18.624	-703574.268672
M3-11	M3-2	93-37-14	270-40-54	22.275	-148492.344	-37778.759	18.400	-695129.165600
M3-2	M3-1	133-54-15	224-35-09	4.010	-148492.079	-37801.032	-2.591	97942.473912
							倍面積	934.022575
							面積	467.011288

* * 面積計算 (座標法) * *

地 器械点	番 : 3-2 視準点	内角	方向角	距離	[1] X(i)	[2] Y(i)	[3] X(i+1)-X(i-1)	[2]*[3]
M3-11	M3-15	86-25-34	177-03-42	17.323	-148492.344	-37778.759	-16.913	638952.150967
M3-15	M3-5	91-39-27	88-43-09	37.308	-148509.644	-37777.871	-16.466	622050.423886
M3-5	M3-4	89-24-09	358-07-18	13.301	-148508.810	-37740.572	14.128	-533198.801216
M3-4	M3-3	136-00-26	314-07-44	4.000	-148495.516	-37741.008	16.079	-606837.667632
M3-3	M3-11	136-30-24	270-38-08	34.882	-148492.731	-37743.879	3.172	-119723.584188
							倍面積	1242.521817
							面積	621.260909

* * 面積計算 (座標法) * *

地 器械点	番 : 3-3 視準点	内角	方向角	距離	[1] X(i)	[2] Y(i)	[3] X(i+1)-X(i-1)	[2]*[3]
M3-20	M3-10	89-58-51	178-53-44	26.875	-148523.253	-37803.293	-27.319	1032748.161467
M3-10	M3-9	135-02-24	133-56-08	12.027	-148550.123	-37802.775	-35.215	1331224.721625
M3-9	M3-8	134-56-25	88-52-33	41.899	-148558.468	-37794.114	-7.523	284325.119622
M3-8	M3-7	134-38-43	43-31-16	18.604	-148557.646	-37752.223	14.312	-540309.815576
M3-7	M3-5	134-35-57	358-07-13	35.365	-148544.156	-37739.412	48.836	-1843041.924432
M3-5	M3-15	90-35-56	268-43-09	37.308	-148508.810	-37740.572	34.512	-1302502.620864
M3-15	M3-16	88-19-58	177-03-07	0.836	-148509.644	-37777.871	-1.669	63051.266699
M3-16	M3-17	271-51-36	268-54-43	2.001	-148510.479	-37777.828	-0.873	32980.043844
M3-17	M3-19	89-59-16	178-53-59	12.289	-148510.517	-37779.829	-12.325	465636.392425
M3-19	M3-20	270-00-54	268-54-53	23.704	-148522.804	-37779.593	-12.736	481160.896448
							倍面積	5272.241258
							面積	2636.120629

* * 面積計算 (座標法) * *

地 器械点	番 : 3-4 視準点	内角	方向角	距離	[1] X(i)	[2] Y(i)	[3] X(i+1)-X(i-1)	[2]*[3]
M3-13	M3-20	89-57-37	178-52-30	1.884	-148521.369	-37803.330	-2.333	88195.168890
M3-20	M3-19	90-02-23	88-54-53	23.704	-148523.253	-37803.293	-1.435	54247.725455
M3-19	M3-18	89-59-26	358-54-19	1.884	-148522.804	-37779.593	2.333	-88139.790469
M3-18	M3-13	90-00-34	268-54-53	23.705	-148520.920	-37779.629	1.435	-54213.767615
							倍面積	89.336261
							面積	44.668131

* * 面積計算 (座標法) * *

地 器械点	番 : 3-5 視準点	内角	方向角	距離	[1] X(i)	[2] Y(i)	[3] X(i+1)-X(i-1)	[2]*[3]
M3-14	M3-13	89-58-19	178-52-55	10.403	-148510.968	-37803.533	-10.852	410243.940116
M3-13	M3-18	90-01-58	88-54-53	23.705	-148521.369	-37803.330	-9.952	376218.740160
M3-18	M3-17	89-59-02	358-53-55	10.405	-148520.920	-37779.629	10.852	-409984.533908
M3-17	M3-14	90-00-41	268-54-36	23.708	-148510.517	-37779.829	9.952	-375984.858208
							倍面積	493.288160
							面積	246.644080