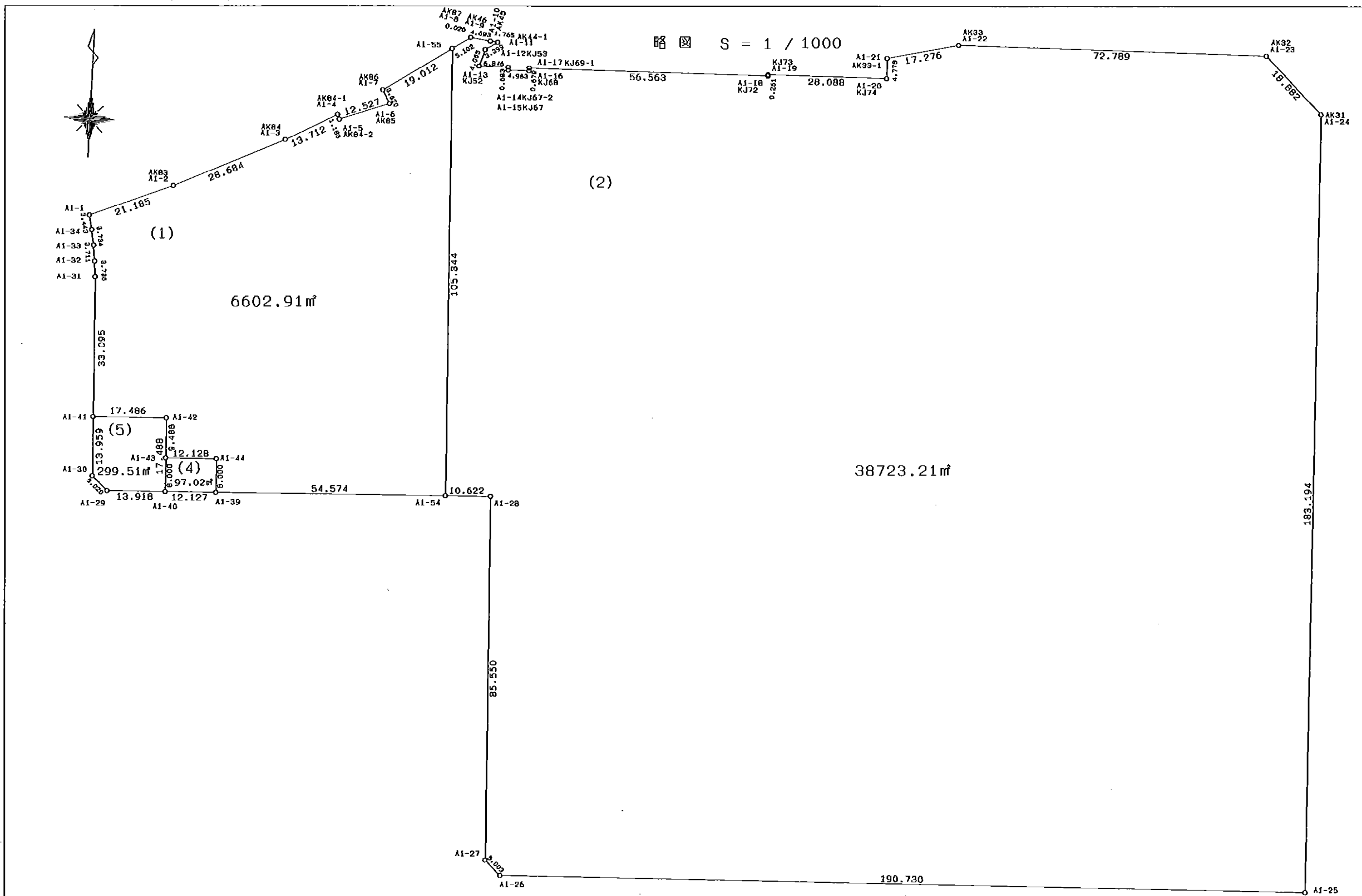


略図 S = 1 / 1000



※ ※ 面積計算 (座標法) ※ ※

地 器械点	番 : 視準点	1-1 内角	方向角	距離	[1] X(i)	[2] Y(i)	[3] X(i+1)-X(i-1)	[2]*[3]
A1-1	A1-34	100-01-12	167-45-36	3.443	-148641.165	-38027.864	-11.390	433137.370960
A1-34	A1-33	182-46-31	170-32-07	3.734	-148644.530	-38027.134	-7.048	268015.240432
A1-33	A1-32	182-43-01	173-15-08	3.711	-148648.213	-38026.520	-7.368	280179.399360
A1-32	A1-31	182-01-07	175-16-15	3.736	-148651.898	-38026.084	-7.408	281697.230272
A1-31	A1-41	182-30-20	177-46-35	33.095	-148655.621	-38025.776	-36.793	1399082.376368
A1-41	A1-42	90-00-05	87-46-40	17.486	-148688.691	-38024.492	-32.392	1231689.344864
A1-42	A1-43	269-59-58	177-46-38	9.488	-148688.013	-38007.019	-8.803	334575.788257
A1-43	A1-44	89-59-50	87-46-28	12.128	-148697.494	-38006.651	-9.010	342439.925510
A1-44	A1-39	270-00-17	177-46-45	8.000	-148697.023	-37994.532	-7.523	285832.864236
A1-39	A1-54	89-59-52	87-46-37	54.574	-148705.017	-37994.222	-5.877	223292.042694
A1-54	A1-55	89-59-59	357-46-36	105.344	-148702.900	-37939.689	107.382	-4074039.684198
A1-55	A1-7	58-46-05	236-32-41	19.012	-148597.635	-37943.776	94.784	-3596462.864384
A1-7	A1-6	94-45-32	151-18-13	3.620	-148608.116	-37959.638	-13.656	518376.816528
A1-6	A1-5	278-56-11	250-14-24	12.527	-148611.291	-37957.900	-7.410	281268.039000
A1-5	A1-4	263-28-35	333-42-59	1.183	-148615.526	-37969.689	-3.174	120515.792886
A1-4	A1-3	88-00-03	241-43-02	13.712	-148614.465	-37970.213	-5.436	206406.077868
A1-3	A1-2	183-09-35	244-52-37	28.684	-148620.962	-37982.288	-18.675	709319.228400
A1-2	A1-1	182-51-47	247-44-24	21.185	-148633.140	-38008.258	-20.203	767880.836374
							倍面積	13205.825427
							面積	6602.9127135

<< 岡山駅南第2地区 >>

※ ※ 面積計算 (座標法) ※ ※

地 器械点	番 : 視準点 ¹⁻²	内角	方向角	距離	[1] X(i)	[2] Y(i)	[3] X(i+1)-X(i-1)	[2]*[3]
A1-55	A1-54	121-13-59	177-46-36	105.344	-148597.635	-37943.776	-108.078	4100887.422528
A1-54	A1-28	90-00-02	87-46-38	10.622	-148702.900	-37939.689	-104.853	3978090.210717
A1-28	A1-27	270-00-29	177-47-07	85.550	-148702.488	-37929.075	-85.074	3226778.126550
A1-27	A1-26	135-08-28	132-55-35	5.003	-148787.974	-37925.769	-88.893	3371335.383717
A1-26	A1-25	135-13-28	88-09-03	190.730	-148791.381	-37922.106	2.748	-104209.947288
A1-25	A1-24	89-57-43	358-06-46	183.194	-148785.226	-37731.475	189.250	-7140681.643750
A1-24	A1-23	135-24-24	313-31-10	18.882	-148602.131	-37737.508	196.097	-7400212.106276
A1-23	A1-22	135-23-19	268-54-29	72.789	-148589.129	-37751.200	11.615	-438480.188000
A1-22	A1-21	167-58-13	256-52-42	17.276	-148590.516	-37823.976	-5.309	200807.488584
A1-21	A1-20	101-28-00	178-20-42	4.778	-148594.438	-37840.801	-8.698	329139.287098
A1-20	A1-19	270-24-38	268-45-20	28.088	-148599.214	-37840.663	-5.386	203809.810918
A1-19	A1-18	94-05-45	182-51-05	0.261	-148599.824	-37868.744	-0.871	32983.676024
A1-18	A1-17	266-01-42	268-52-47	56.563	-148600.085	-37868.757	-1.367	51766.590819
A1-17	A1-16	92-43-23	181-36-10	0.679	-148601.191	-37925.309	-1.785	67696.676565
A1-16	A1-15	267-21-03	268-57-13	4.983	-148601.870	-37925.328	-0.770	29202.502560
A1-15	A1-14	269-42-16	358-39-29	0.683	-148601.961	-37930.310	0.592	-22454.743520
A1-14	A1-13	90-38-20	269-17-49	6.846	-148601.278	-37930.326	0.599	-22720.265274
A1-13	A1-12	288-20-41	17-38-30	4.065	-148601.362	-37937.171	3.790	-143781.878090
A1-12	A1-11	219-13-12	56-51-42	3.399	-148597.488	-37935.939	5.732	-217448.802348
A1-11	A1-10	38-57-31	275-49-13	1.765	-148595.630	-37933.093	2.037	-77269.710441
A1-10	A1-9	181-49-16	277-38-29	4.693	-148595.451	-37934.849	0.803	-30461.683747
A1-9	A1-8	187-06-08	284-44-37	0.020	-148594.827	-37939.500	0.629	-23863.945500
A1-8	A1-55	131-48-00	236-32-37	5.102	-148594.822	-37939.519	-2.808	106534.169352

<< 岡山駅南第2地区 >>

倍面積 77446.431198
面積 38723.2155990

※ ※ 面積計算 (座標法) ※ ※

地 器械点	番 : 視準点	1-4 内角	方向角	距離	[1] X(i)	[2] Y(i)	[3] X(i+1)-X(i-1)	[2]*[3]
A1-43	A1-40	89-59-51	177-46-19	8.000	-148697.494	-38006.651	-8.465	321726.300715
A1-40	A1-39	90-00-08	87-46-27	12.127	-148705.488	-38006.340	-7.523	285921.695820
A1-39	A1-44	90-00-18	357-46-45	8.000	-148705.017	-37994.222	8.465	-321621.089230
A1-44	A1-43	89-59-43	267-46-28	12.128	-148697.023	-37994.532	7.523	-285832.864236
								倍面積 194.043069
								面積 97.0215345

※ ※ 面積計算 (座標法) ※ ※

地 器械点	番 : 視準点	1-5 内角	方向角	距離	[1] X(i)	[2] Y(i)	[3] X(i+1)-X(i-1)	[2]*[3]
A1-41	A1-30	89-59-49	177-46-29	13.959	-148688.691	-38024.492	-14.626	556146.219992
A1-30	A1-29	134-41-55	132-28-24	5.020	-148702.639	-38023.950	-17.338	659259.245100
A1-29	A1-40	135-17-56	87-46-20	13.918	-148706.029	-38020.247	-2.849	108319.683703
A1-40	A1-42	90-00-10	357-46-30	17.488	-148705.488	-38006.340	18.016	-684722.221440
A1-42	A1-41	90-00-10	267-46-40	17.486	-148688.013	-38007.019	16.797	-638403.898143
								倍面積 599.029212
								面積 299.5146060