

街区略図

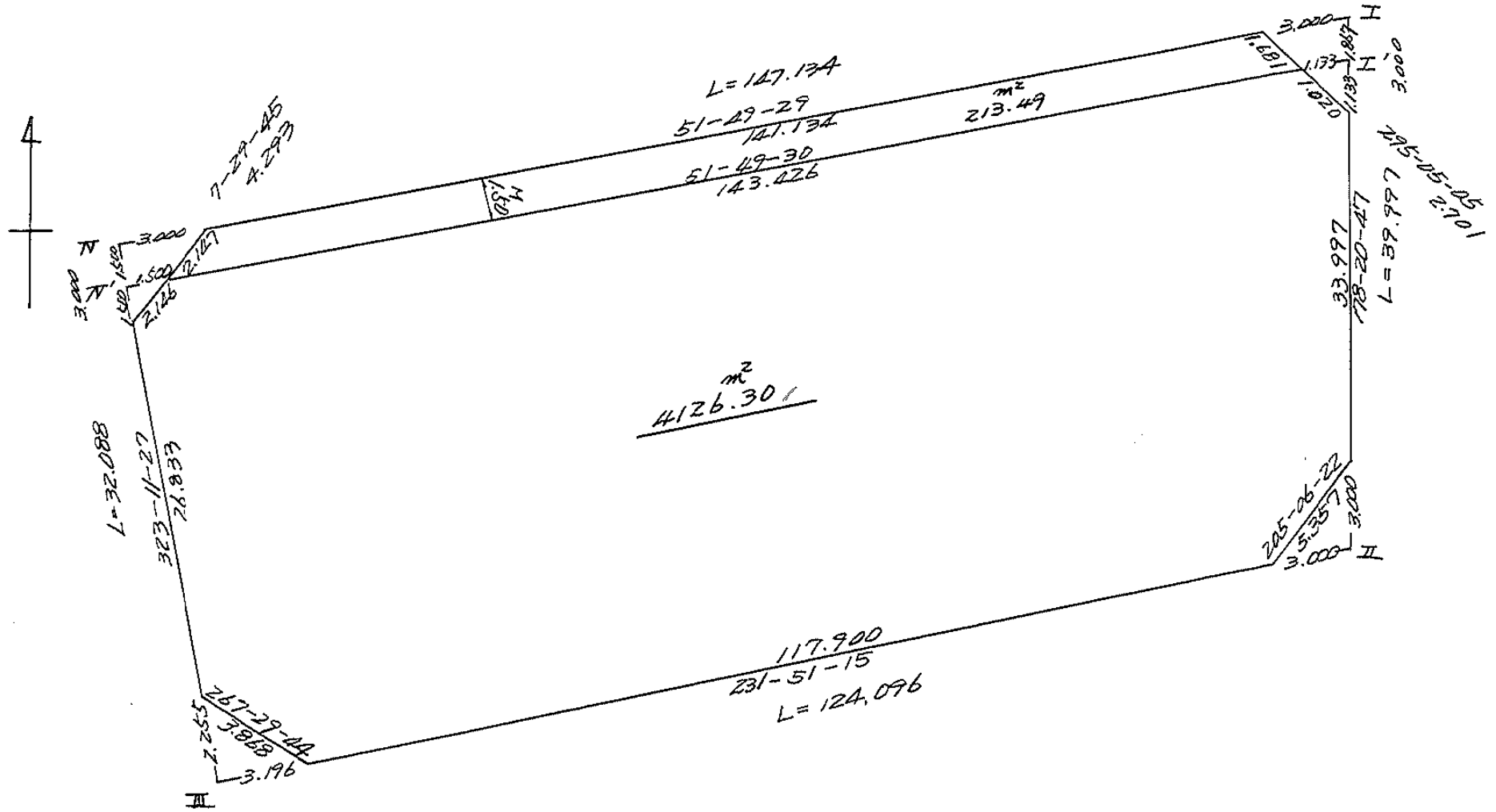
工区

ブロック

12

記入者

点検者



# 面積計算書

工  
区

ブ  
ロ  
ック

12

計  
算  
者



精  
算  
者

備  
考

全  
体

点	①	②	③	④	⑤	⑥	③ × ⑤		② × ⑥	
	X	X - (定数)	X <sub>n-1</sub> - X <sub>n+1</sub>	Y	Y - (定数)	Y <sub>n-1</sub> - Y <sub>n+1</sub>	+	-	+	-
	-148.	-148.200.		-40	-40.000.					
I	277.525	77.525	-50.959	030.811	30.811	-116.820	1570.097769		9056.470500	
II	317.505	117.505	+116.630	029.657	29.657	+96.440		3458.895910		11332.182200
III	394.155	194.155	+50.959	127.251	127.251	+116.820		6494.583709		22681.187100
IV	368.464	168.464	-116.630	146.477	146.477	-96.440	17083.612510		16246.668160	
							18653.710289	9943.479619	25803.138660	34013.369300
							8710.230640			8710.230640
								$\frac{1}{2} = 4355.115320$		
							<del><math>(4355.11 - 213.49 - 4.49 - 3.61) = 4133.52</math></del>			
							* I II III IV $4355.11 - (213.49) - (3.61 - 3.61 - 3.60 - 4.50) = 4126.30$			
							15.32 <sup>m</sup>			

# 地 計 算

画地略図

工区

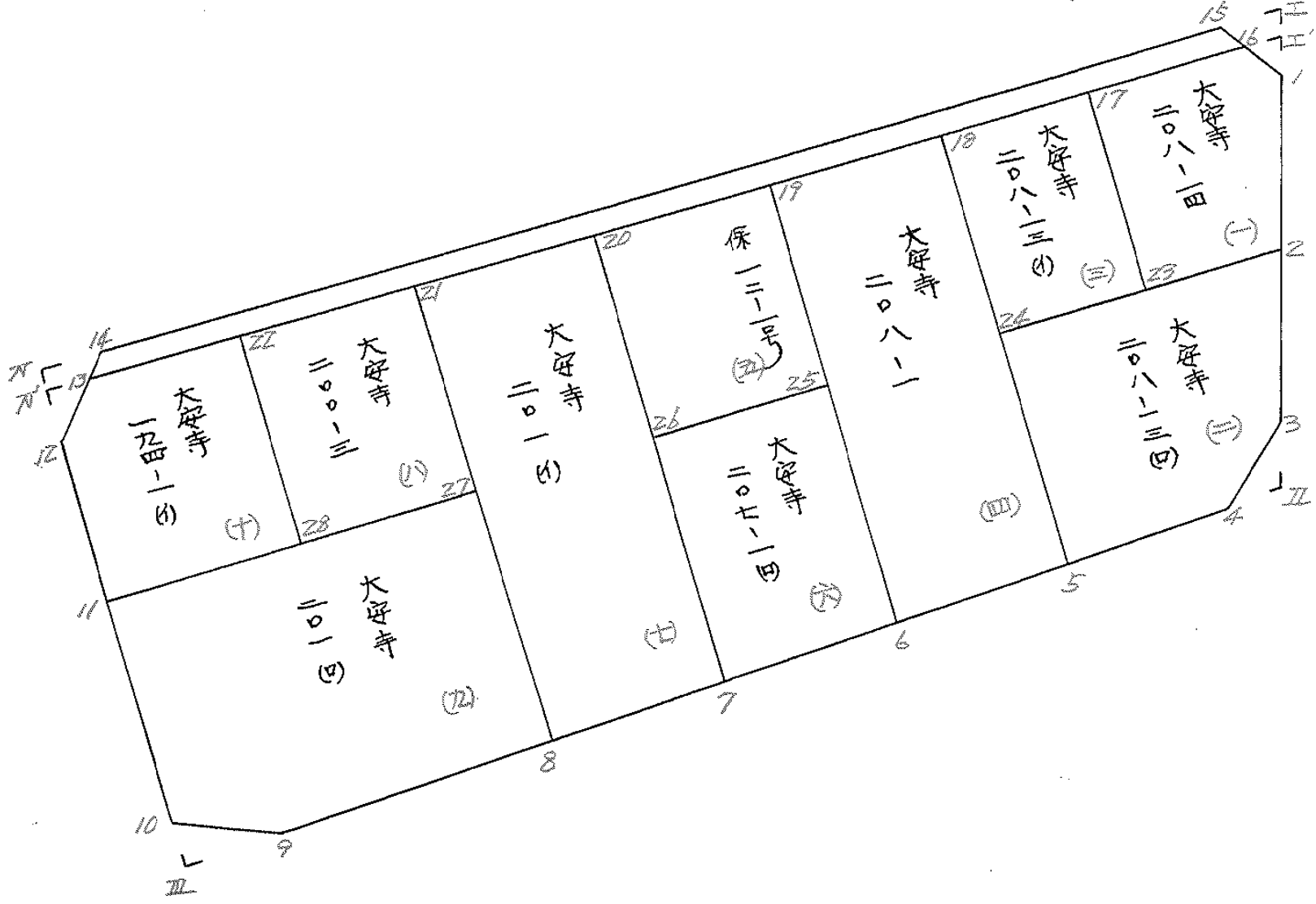
ブロック

12

記入者



点検者



# 面積計算書

工  
区

ブ  
ロ  
ック

12

計  
算  
者

精  
算  
者

備  
考

大安寺ニ〇八、-四 (-)  
大安寺ニ〇八、-三(1) (E)

点	①	②	③	④	⑤	⑥	③ × ⑤		② × ⑥	
	X	X-(定数)	X <sub>n-1</sub> -X <sub>n+1</sub>	Y	Y-(定数)	Y <sub>n-1</sub> -Y <sub>n+1</sub>	+	-	+	-
	-148	148.280		-40	40.030					
1	280.524	-0.524	+17.493	030.724	-0.724	-1.416		12.664932	0.741984	
2	297.585	-17.585	+28.502	030.232	-0.232	+14.052		6.612464		247.104420
23	309.026	-29.026	-0.077	044.776	-14.776	+23.568	1.137752			684.084768
17	297.508	-17.508	-28.934	053.800	-23.800	-13.128	688.629200		229.845024	
16	280.092	-0.092	-16.984	031.648	-1.648	-23.076	27.989632		2.122992	
							717.756584	9.277396	232.710000	931.189188
							698.479188			698.479188
							1/2 = 349.239594			
	-148	148.290		-20	40.040					
17	297.508	-7.508	+0.083	053.800	-13.800	-23.568		1.145400	176.948544	
23	309.026	-19.026	+22.957	044.776	-4.776	+5.517		109.642632		104.966442
24	320.465	-30.465	-0.083	059.317	-19.317	+23.568	1.603311			717.999120
18	308.943	-18.943	-22.957	068.344	-28.344	-5.517	650.693208		104.508531	
							652.296519	110.788032	281.457075	822.965562
							541.508487			541.508487
							1/2 = 270.7542435			

# 面積計算書

工  
区

ブ  
ロ  
ック

12

計  
算  
者



精  
算  
者

備  
考

大分市 = 〇八 一 一 三 (四) (一)  
大分市 = 〇八 一 一 (四) (四)

点	①	②	③	④	⑤	⑥	③ × ⑤		② × ⑥	
	X	X - (定数)	X <sub>n-1</sub> - X <sub>n+1</sub>	Y	Y - (定数)	Y <sub>n-1</sub> - Y <sub>n+1</sub>	+	-	+	-
2	-148. 297.585	148.290 -7.585	-5.958,	-40. 030.232	40.020 -10.232	-29.574,	60.962256		224.318790	
3	314.507,	-24.507	+21.773,	029.743,	-9.743	+1.784,		212.134339		43.720488
4	319.258,	-29.358	+18.547,	032.016,	-12.016	+19.711,		222.860752		578.675538
5	333.054,	-43.054	+1.107,	049.454,	-29.454	+27.301,		32.605578		1175.417254
24	320.465,	-30.465	-35.469,	059.317,	-39.317	-19.222,	1394.534673		485.598230	
							1455.496929	467.600669	809.917020	1797.813280
							987.896260			987.896260
									1/2 = 493.948130	
18	-148. 308.943	148.300 -8.943	77.861,	-40. 068.344	40.040 -28.344	-39.559,		222.812184	353.776137	
5	333.054,	-33.054	+40.343	049.454,	-9.454	+1.778,		381.402722		58.770012
6	349.286,	-49.286	-7.861,	070.122,	-30.122	+39.559,	236.789042			1949.704874
19	325.193,	-25.193	-40.343,	089.013,	-49.013	-1.778,	1977.331459		44.793154	
							2214.120501	604.214906	398.569291	2008.474886
							1609.905595			1609.905595
									1/2 = 804.9527975	

面積計算書						工 区	フ ロ ック	12	計 算 者	精 算 者	備 考	保一ニ、一号 (五) 大字等=0七、一〇 (六)
点	①	②	③	④	⑤	⑥	③ × ⑤	② × ⑥				
	X	X-(定数)	X <sub>n-1</sub> -X <sub>n+1</sub>	Y	Y-(定数)	Y <sub>n-1</sub> -Y <sub>n+1</sub>	+	-				
	-148,	-148,320.000		-40,	-40,070.000							
19	325.193	5.193	+0.426	089.013	19.013	-23.125	8.099538	120.088125				
25	336.704	16.704	+22.594	079.988	9.988	+5.071	225.668872	84.705984				
26	347.787	27.787	-0.426	084.084	24.084	+23.125	10.249784	642.574375				
20	336.278	16.278	-22.594	103.113	33.113	-5.071	748.155122	82.545738				
							748.414906	233.768410				
							202.633863	727.280349				
							524.646496	524.646496				
								1/2 = 262.323298,				
	-148,	-148,330.000		-40,	-40,070.000							
25	336.704	6.704	+1.499	079.988	9.988	-23.962	14.972012	160.641248				
6	349.286	19.286	+23.655	070.122	0.122	+4.233	2.885910	81.637638				
7	360.359	30.359	-1.499	084.221	14.221	+23.962	21.317279	727.462368				
26	347.787	17.787	-23.655	084.084	24.084	-4.233	569.707020	75.292371				
							591.024299	17.857922				
							235.933619	809.099996				
							573.166377	573.166377				
								1/2 = 286.5831885,				

# 面積計算書

工  
区

フ  
ロ  
ック

12

計  
算  
者



精  
算  
者

備  
考

大字号 = 0 - (イ) (七)  
大字号 = 001 三 (ハ)

点	①	②	③	④	⑤	⑥	③ × ⑤		② × ⑥		
	X	X - (定数)	X <sub>n-1</sub> - X <sub>n+1</sub>	Y	Y - (定数)	Y <sub>n-1</sub> - Y <sub>n+1</sub>	+	-	+	-	
	-148.	-148,330.000		-40.	-40,080.000						
20	336.278	6.278	+ 14.807	123.113	23.113	- 30.687		342.234191	192.652986		
7	360.359	30.359	+ 33.343	284.221	4.221	- 7.100		140.740803	215.548900		
8	369.621	39.621	- 14.807	296.013	16.013	+ 30.687	237.104491			1215.849627	
21	345.552	15.552	- 33.343	114.908	34.908	+ 7.100	1163.937444			110.419200	
								1401.041935	482.974994	408.201886	1326.268827
								918.066941			918.066941
											1/2 = 459.0334705
21	345.552	5.552	- 1.665	114.908	14.908	- 25.772	24.821820			143.086144	
27	357.052	17.052	+ 24.662	105.880	5.880	+ 7.717		145.012560		131.590284	
28	370.214	30.214	+ 1.665	122.625	22.625	+ 25.772		37.670625		778.675208	
22	358.717	18.717	- 24.662	131.652	31.652	- 7.717	780.601624			144.439089	
								805.423444	182.683185	287.525233	910.265492
								622.740259			622.740259
											1/2 = 311.3701295



# 面積計算書

工  
区

ブ  
ロ  
ック

12

計算者



精算者

備考

大分県一九四一(一) (十)  
大分県二〇(一) (九)

点	①	②	③	④	⑤	⑥	③ × ⑤		② × ⑥	
	X	X-(定数)	X <sub>n-1</sub> -X <sub>n+1</sub>	Y	Y-(定数)	Y <sub>n-1</sub> -Y <sub>n+1</sub>	+	-	+	-
22	-148.350 358.717	148.350 -8.717	+1.476	-40.131.652	40.120 -11.652	-21.774		17.188.352	189.803.958	
28	370.214	-20.214	+22.653	122.625	-2.625	+5.167		59.464.125	104.445.738	
11	381.370	-31.370	+0.652	136.819	-16.819	+22.054		10.965.988	691.833.980	
12	370.866	-20.866	-12.632	144.679	-24.679	+7.580	311.745.128		158.164.280	
13	368.738	-18.738	-12.149	144.399	-24.399	-13.027	296.423.451		244.099.926	
							608.168.579	87.628.465	433.903.884	954.443.998
							520.540.114		520.540.114	
								1/2 = 260.270.057		
27	-148.350 357.052	148.350 -7.052	-11.749	-40.105.880	40.090 -15.880	-40.806	186.574.120		287.763.912	
8	369.621	-19.621	+35.129	096.013	-6.013	+18.858		211.230.677	370.012.818	
9	392.181	-42.181	+22.729	124.738	-24.738	+32.589		789.560.002	1374.636.609	
10	392.350	-42.350	-10.811	128.602	-38.602	+12.081	47.326.222		516.630.350	
11	381.370	-31.370	-35.298	136.819	-46.819	-22.722	165.617.062		712.789.140	
							2256.517.404	1000.790.679	1000.553.052	2256.279.777
							1255.726.725		1255.726.725	
								1/2 = 627.863.362.5		

# 面積計算書

工  
区

フ  
ロ  
ック

12.

計  
算  
者



精  
算  
者

備  
考

隣切 Ⅰ, Ⅱ

点	①	②	③	④	⑤	⑥	③ × ⑤		② × ⑥	
	X	X-(定数)	X <sub>n-1</sub> -X <sub>n+1</sub>	Y	Y-(定数)	Y <sub>n-1</sub> -Y <sub>n+1</sub>	+	-	+	-
	-148	148.270		-40	40.030					
Ⅰ	277.525	-7.525	+1.145	030.811	-0.811	-2.446		0.928595	18.206150	
1	280.524	-10.524	+1.854	030.724	-0.724	+2.359		1.342296		24826116
15	279.379	-9.379	-2.999	033.170	-3.170	+0.087	9.506830			0.815973
							9.506830	2.270891	18.406150	25642089
							7.235939			7.235909
										$\frac{1}{2} = 3.6179695$ $\approx 3.61^{m^2}$
	-148	148.310		-40	40.020					
Ⅲ	314.507	-4.507	-1.853	029.743	-9.743	-2.359	18.053779		10.632013	
Ⅱ	317.505	-7.505	+4.851	029.657	-9.657	+2.273		46.846107		17.058865
4	319.358	-9.358	-2.998	032.016	-12.016	+0.086	36.023918			0.804788
							54.077747	46.846107		17.863653
							7.231640			7.231640
										$\frac{1}{2} = 3.615820$ $\approx 3.61^{m^2}$

# 面積計算書

工  
区

フ  
ロ  
ック

12

計  
算  
者

精  
算  
者

備  
考

隔切Ⅲ,Ⅳ

点	①	②	③	④	⑤	⑥	③ × ⑤		② × ⑥	
	X	X-(定数)	X <sub>n-1</sub> -X <sub>n+1</sub>	Y	Y-(定数)	Y <sub>n-1</sub> -Y <sub>n+1</sub>	+	-	+	-
9	-148 392.181	148.390 -2.181	+1.805	-40 124.738	40.120 -4.738	-1.351			8.552090	2.946531
Ⅲ	394.155	-4.155	+0.169	127.251	-7.251	73.864			1.225419	16.054920
10	392.350	-2.350	-1.974	128.602	-8.602	-2.573	16.980348		5.945500	
							16.980348	9.777509	8.852081	16.054920
							7.202839			7.202839
								1/2 23.6014195		≒ 3.60 <sup>m²</sup>
12	-148 370.866	148.360 -10.866	+1.854	-40 144.679	40.140 -4.679	+2.358			8.674866	25.622028
Ⅳ	368.464	-8.464	-4.256	146.477	-6.477	-0.560	27.566112		4.739840	
14	366.610	-6.610	+2.402	144.119	-4.119	-1.798			9.893838	11.884780
							27.566112	13.568704	16.624620	25.622028
							8.797408			8.797408
								1/2 24.498704		≒ 4.50 <sup>m²</sup>

# 面積計算書

工  
区

フ  
ロ  
ック

12

計  
算  
者



精  
算  
者

備  
考

水路11号線1.5M

点	①	②	③	④	⑤	⑥	③ × ⑤		② × ⑥	
	X	X - (定数)	X <sub>n-1</sub> - X <sub>n+1</sub>	Y	Y - (定数)	Y <sub>n-1</sub> - Y <sub>n+1</sub>	+	-	+	-
16	<sup>-148</sup> 280.092	<sup>-148.270</sup> 10.092	+89.359	<sup>-40</sup> 031.648	<sup>40.030</sup> -1.648	+111.229		147.263632		1122.523068
13	368.738	98.738	+86.518	144.399	-114.399	+112.471		9897.572682		11185.161598
14	366.610	96.610	-89.359	144.119	-114.119	-111.229	10.19755972			10765.83369
15	279.379	9.379	-86.518	033.170	-3.170	-112.471	274.26206			1056.865609
							10.47182178	10.04483634	11800.69989	2227.684666
							426.985467			426.985467
										1/2 = 213.4927335
										≒ 213.49 m <sup>2</sup>

計年  
月  
算日

計  
算  
者



檢  
查  
者



B.NO. 12

各筆面積計算書

地番	算式	隅切	地積	摘要
1	特 208 - 14		349.23	
2	特 208 - 13 (四)		493.94	
3	特 208 - 13 (一)		270.75	
4	特 208 - 1		804.75	
5	保 12 - 1号		262.32	
6	特 207 - 1 (四)		286.58	
7	特 201 (一)		459.03	
8	特 200 - 3		311.37	
9	特 201 (四)		627.86	
10	特 194 - 1 (一)		260.27	
	合計		4126.30	
	全面積		4126.30	
		差	- 0.00	
	空地面積		3863.98	9筆
	保留地面積		262.32	1筆
	水路面積 11号線1.5M		213.49	

S-53-4.6

略	図	工区	ブロック	12	記入者	点検者
---	---	----	------	----	-----	-----

The diagram shows a site plan with two rectangular areas. The upper area is labeled '大安寺' (Daianji) and 'ニローニ' (Niroji). The lower area is also labeled '大安寺' (Daianji) and 'ニローニ' (Niroji). A north arrow is located on the left side of the diagram. Numerical labels are placed at the corners and along the boundaries: 21 and 20 at the top left and right corners of the upper area; 30 and 29 at the bottom left and right corners of the lower area; 8 and 7 at the bottom left and right corners of the entire plan.

面積計算書

工区

ブロック

12

計算者



精算者

備考

大安寺 201-1 201-2

点	①	②	③	④	⑤	⑥	③ × ⑤		② × ⑥	
	X	X-(定数)	X <sub>n-1</sub> -X <sub>n+1</sub>	Y	Y-(定数)	Y <sub>n-1</sub> -Y <sub>n+1</sub>	+	-	+	-
21	-148,345.552	-148.330. 15.552	-21.314	-40,114.908	-40.070. 24.908	-2.343	530.889112			36.438336
20	336.278	6.278	+2.775	103.113	13.113	-21.248		36.388575	133.394944	
29	348.327	18.327	+21.314	093.660	3.660	+2.343		78.009240		42.940161
30	357.592	27.592	-2.775	105.456	15.456	+21.248	42.890400			586.274816
							573.779512	114.397815	169.833280	629.214977
		459.03	-229.34	229.69			459.381697			459.381697
										$\frac{1}{2} = 229.6908485 = 229.69$
30	-148,357.592	-148.340. 17.592	-21.294	-40,105.456	-40.080. 25.456	-2.353	542.060064			41.393976
29	348.327	8.327	+2.767	093.660	13.660	-21.235		37.797220	176.823845	
7	360.359	20.359	+21.294	084.221	4.221	+2.353		89.881974		47.904727
8	369.621	29.621	-2.767	086.013	16.013	+21.235	44.307971			629.001933
							586.368035	127.679194	218.217821	676.906662
							458.688841			458.688841
										$\frac{1}{2} = 229.3444205$
										<u>229.34</u>