

街区略図

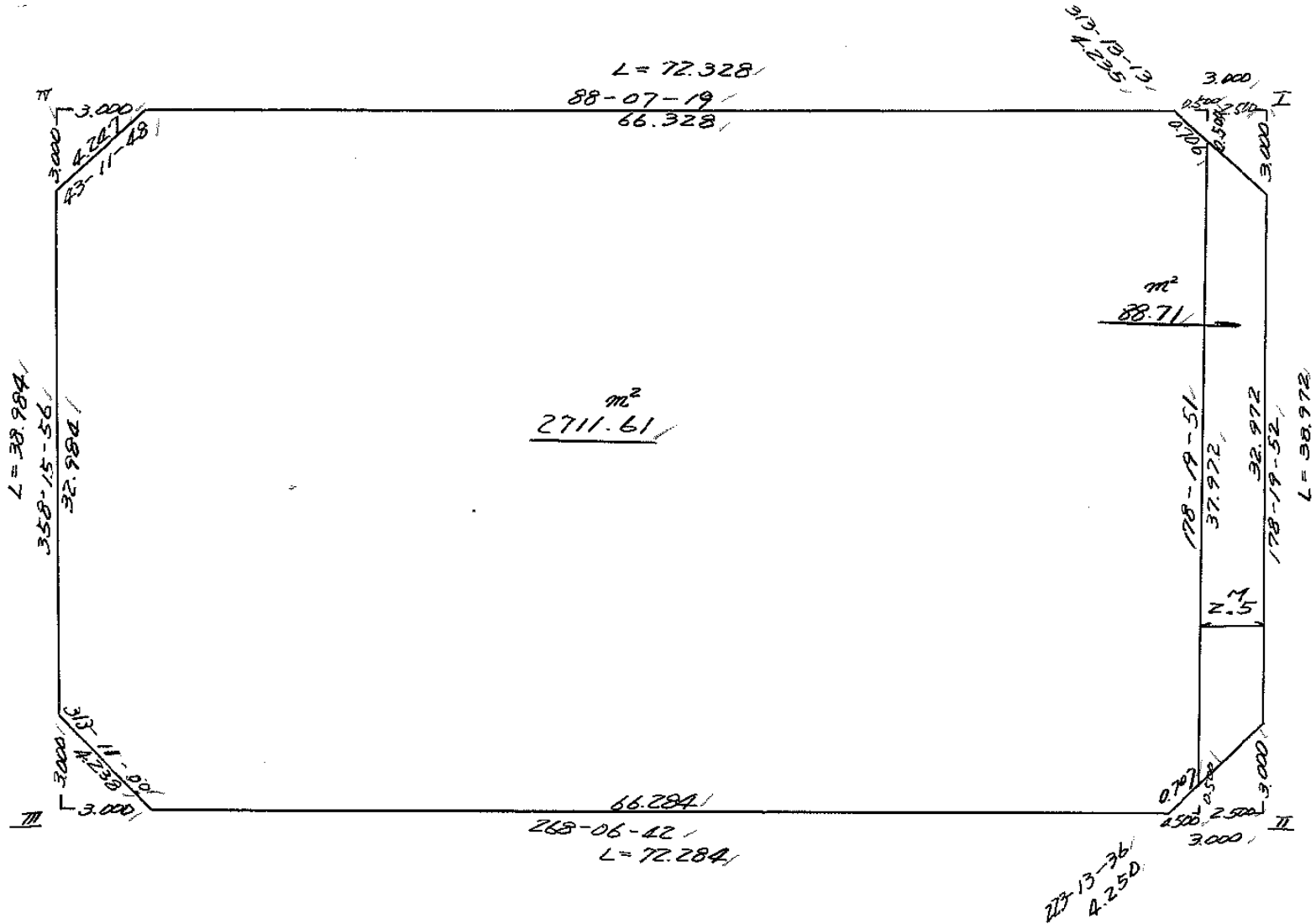
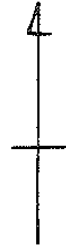
工区

ブロック

16

記入者

点検者





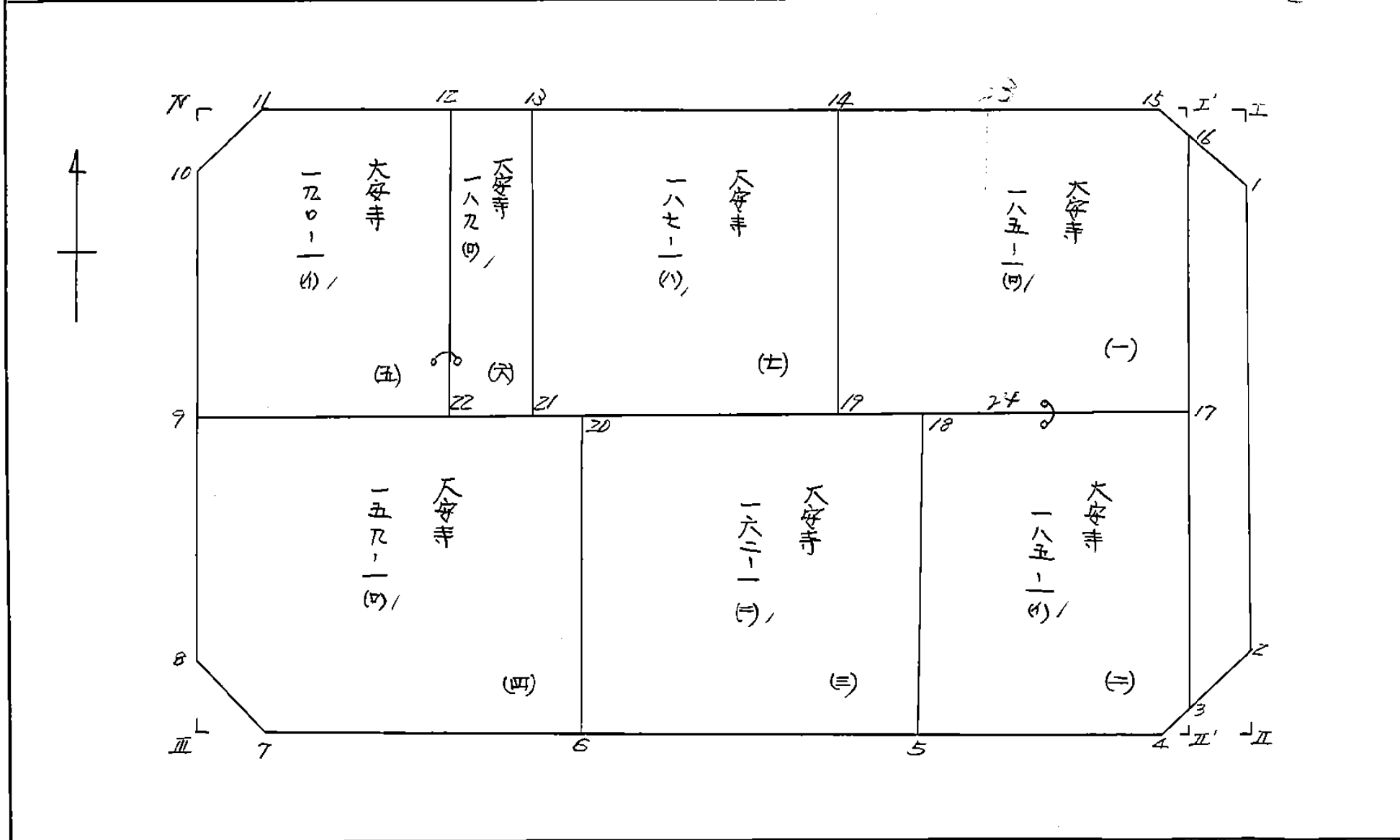
面積計算書

工 区
 ブ ロ ッ ク
 16
 計算者
 精算者
 101
 備考
 全体

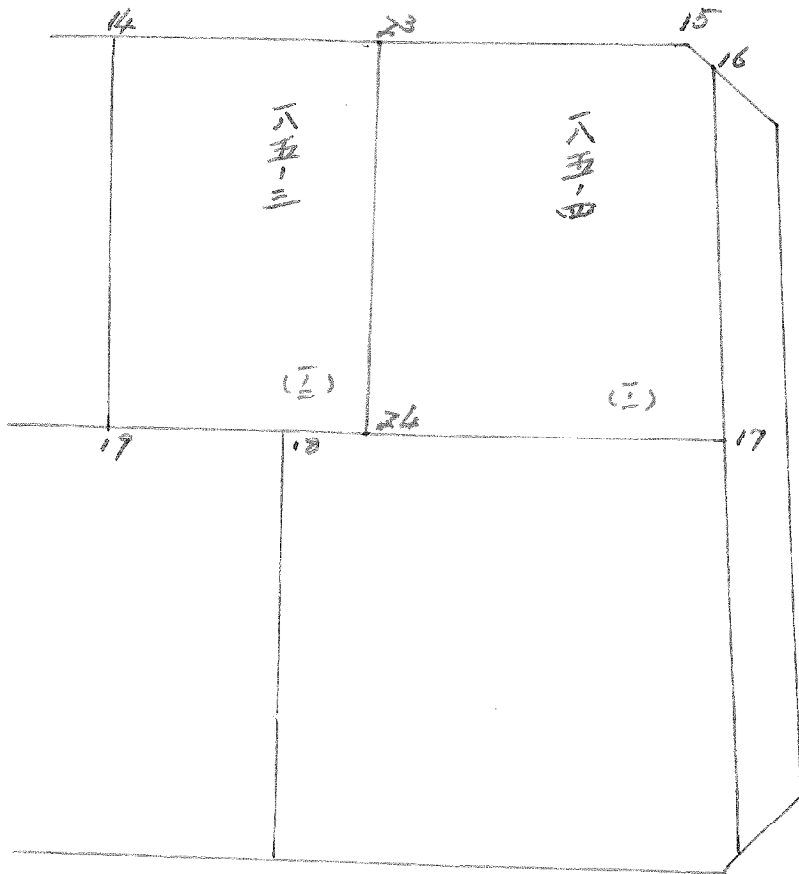
点	①	②	③	④	⑤	⑥	③ × ⑤	② × ⑥	
	X	X - (定数)	X _{n-1} - X _{n+1}	Y	Y - (定数)	Y _{n-1} - Y _{n+1}			+
I	-148 505.252	-148.500 5.353	+36.584	129.997	-40.100 29.997	-73.425		1097.410213	
II	544.308	44.308	+41.337	128.862	28.862	+71.110		3150.741890	
III	546.690	46.690	-36.584	201.107	101.107	+73.425	3698.898688	3428.23260	
IV	507.724	7.724	-41.337	202.287	102.287	-71.110	4228.237719	549.253640	
							7927.136207	2290.478742	942.297665
							5636.657465		6578.955130
									5636.657465
							$\times \frac{1}{2} = 2818.3287325$		$= 2818.32$
							$\frac{1600}{I}$		
							$2818.32 - (4.50 + 4.50 + 4.50 + 4.50) = 2711.61$	$- 88.71$	$= 2711.61$

画地計算

画地略図	工区	ブロック	16	記入者		点検者	
------	----	------	----	-----	---	-----	---



BNO. 16 分割計算



面積計算書

工区

ブロック

16

計算者

12/11/11

精算者

(12/11)

備考

1 大塚寺 185-1(10)
2 大塚寺 185-1(11)

点	①	②	③	④	⑤	⑥	③ × ⑤		② × ⑥	
	X	X-(定数)	X _{n-1} -X _{n+1}	Y	Y-(定数)	Y _{n-1} -Y _{n+1}	+	-	+	-
	-148	148.500		-40	40.130					
16	505.935	-5.935	+18.958	132.482	-2.482	-1.053		47.053756	6.249555	
17	524.410	-24.410	+19.477	131.943	-1.943	+30.453		37.882671		743.357730
19	525.432	-25.432	-17.956	132.935	-32.935	+31.624	591.380860			804.261568
14	506.454	-6.454	-19.980	133.567	-33.567	-29.939	670.668660		199.226366	
15	505.452	-5.452	-0.519	132.996	-2.996	-31.085	1.554924		169.475420	
							1263.604444	21.936427	368.951281	1547.619298
							1178.668017			1178.668017
							$\frac{1}{2} = 589.3340085$			
	-148	148.520		-40	40.130					
17	524.410	-4.410	+18.777	131.943	-1.943	-21.951		36.483711	76.803910	
3	543.892	-23.892	+19.997	131.376	-1.376	-0.083		27.515872	1.983036	
4	544.407	-24.407	+1.201	131.860	-1.860	+21.291		2.233860		579.649437
5	545.093	-25.093	-19.292	152.667	-22.667	+21.467	437.291764			538.671431
18	525.115	-5.115	-20.683	153.327	-23.327	-20.724	482.472341		106.503260	
							919.764105	66.233443	204.790206	1058.320868
							853.530662			853.530662
							$\frac{1}{2} = 426.765331$			

面積計算書

工
区

ブ
ロ
ック

16

計
算
書

備
考

(1-1) 185-4
(1-2) 185-3

点	①	②	③	④	⑤	⑥	③ × ⑤		② × ⑥	
	X	X-(定数)	X _{n-1} -X _{n+1}	Y	Y-(定数)	Y _{n-1} -Y _{n+1}	+	-	+	-
15	^{-118.} 505.652	^{-118.500.} 5.652	- 0.119	^{-60.} 132.996	^{-60.130.} 2.996	- 18.897	0.356524		103.026444	
16	505.935	5.935	+ 18.958	132.682	2.682	- 1.053		47.053756	6.249555	
17	524.410	24.410	+ 19.095	131.963	1.963	+ 18.268		37.101585		445.921880
24	525.030	25.030	- 18.356	150.750	20.750	+ 19.436	380.887000			486.483080
23	506.054	6.054	- 19.578	151.379	21.379	✓ 17.754	418.558062		107.482716	
							799.801586	84.155341	216.758715	932.404960
							715.646245			715.646245
							715.646245 × 1/2 = 357.823122			
23	^{-118.} 506.054	^{-118.500.} 6.054	+ 18.576	^{-60.} 151.379	^{-60.150.} 1.379	- 12.817		25.616304	77.594118	
24	525.030	25.030	+ 19.378	150.750	0.750	+ 11.556		14.533500		289.246680
19	525.432	25.432	- 18.576	162.935	12.935	+ 12.817	240.280560			325.961944
14	506.654	6.654	- 19.378	163.567	13.567	- 11.556	262.901326		74.582424	
							503.181886	40.149804	152.176542	615.208624
							463.032082			463.032082
							463.032082 × 1/2 = 231.516041			

面積計算書

工区: フロック: 16 計算者: 備考者: 備考: 3 大守寺 162-1 (B)
 4 大守寺 159-1 (A)

点	①	②	③	④	⑤	⑥	③ × ⑤		② × ⑥	
	X	X - (定数)	X _{n-1} - X _{n+1}	Y	Y - (定数)	Y _{n-1} - Y _{n+1}	+	-	+	-
18	⁻¹⁴⁸ 525.115	^{148.520} -5.115	179.128	⁻⁴⁰ 153.327	^{40.150} -3.327	-26.453			63,638,856	135,307,075
5	545.093	-25.093	+20.828	152.667	-2.667	+25.120			55,548,276	630,336,160
6	545.943	-25.943	-19.128	178.447	-28.447	+26.453	544,134,216			686,270,179
20	525.965	-5.965	-20.828	179.120	-29.120	-25.120	606,511,360		149,840,800	
							1150,645,576	119,187,132	285,147,895	1316,606,339
							1031,458,444			1031,458,444
							√2 = 515,729,222			
20	⁻¹⁴⁸ 525.965	^{148.520} -5.965	+19.233	⁻⁴⁰ 179.120	^{40.170} -9.120	-23.265			175,404,960	138,775,725
6	545.943	-25.943	+20.626	178.447	-8.447	+18.988			174,227,822	492,605,684
7	546.591	-26.591	-2.252	198.108	-28.108	+22.751	63,299,216			604,971,841
8	543.691	-23.691	-19.881	201.198	-31.198	+3.604	620,247,438			85,382,364
9	526.710	-6.710	-17.726	201.712	-31.712	-22.078	562,126,912		148,143,380	
							1245,673,566	349,632,782	286,919,105	1182,959,889
							896,040,784			896,040,784
							√2 = 448,020,392			

面積計算書

工区

ブロック

16

計算者

計算者

備考

5 大守寺 190-1(1)
6 大守寺 189(1)

点	①	②	③	④	⑤	⑥	③ × ⑤		② × ⑥		
	X	X - (定数)	X _{n-1} - X _{n+1}	Y	Y - (定数)	Y _{n-1} - Y _{n+1}	+	-	+	-	
	⁻¹⁰⁸ 507.233	^{108.500} -7.233	+18.588	⁻⁴⁰ 187.306	^{40.180} -7.306	-12.628			135.203928	91.338324	
22	526.214	-26.214	+19.477	186.661	-6.661	+14.406			129.736297		377.638884
9	526.710	-26.710	-15.492	201.712	-21.712	+15.535	336.362304				414.939850
10	510.722	-10.722	-19.084	202.196	-22.196	-2.423	423.588464			25.979406	
11	507.626	-7.626	-3.489	199.289	-19.289	-14.890	67.299321			113.551140	
							827.250089	265.540225	230.868870	792.578734	
							561.709864				561.709864
									$\frac{1}{2} = 280.854932$		
13	⁻¹⁰⁸ 507.054	^{108.500} -7.054	+18.801	⁻⁴⁰ 181.868	^{40.180} -1.868	-6.090			35.120268	42.958860	
21	526.034	-26.034	+19.160	181.216	-1.216	+4.793			23.298560		124.780962
22	526.214	-26.214	-18.801	186.661	-6.661	+6.090	105.233461				159.643260
12	507.233	-7.233	-19.160	187.306	-7.306	-4.793	139.982296			34.667769	
							265.216421	58.418828	77.626629	284.424222	
							206.797593				206.797593
									$\frac{1}{2} = 103.3987965$		

面積計算書

工
区

ブ
ロ
ック

16

計
算
者



縮
算
者



備
考

7. 大塚寺 187-1 (b)

点	①	②	③	④	⑤	⑥	③ × ⑤		② × ⑥	
	X	X - (定数)	X _{n-1} - X _{n+1}	Y	Y - (定数)	Y _{n-1} - Y _{n+1}	+	-	+	-
	-148	148.500		-40	40.160					
14	506.454	-6.454	+18.378	163.567	-3.567	-18.933		65.554326	122.193582	
19	525.432	-25.432	+19.580	162.935	-2.935	+17.649		57.467300		443.849368
21	526.034	-26.034	-18.378	181.216	-21.216	+18.933	389.907648			492.901722
13	507.054	-7.054	-19.580	181.868	-21.868	-17.649	428.175440		124.496046	
							818.083088	123.021626	246.689628	941.751090
							695.061462			695.061462
								1/2 = 347.530731		

面積計算書

工
区

ブ
ロ
ック

16

計
算
者



精
算
者



備
考

陽切 I, II

点	①	②	③	④	⑤	⑥	③ × ⑤		② × ⑥	
	X	X - (定数)	X _{n-1} - X _{n+1}	Y	Y - (定数)	Y _{n-1} - Y _{n+1}	+	-	+	-
I	-148 508.352	-148.505 0.352	-40 + 2.900	-40 129.997	-40.129 0.997	-3.0866		2.891300	1.089358	
1	508.352	0.352	+ 0.099	129.910	0.910	+ 2.999		0.090090	10.057648	
15	508.452	0.452	- 2.999	129.996	0.996	+ 0.087	11.984004		0.039324	
							11.984004	2.981390	1.089358	10.091972
							9.002614		9.002614	
									1/2 = 4.501307	
									= 4.50	
Z	-148 541.310	-148.541 0.310	-40 - 0.099	-40 128.949	-40.128 0.949	-2.998	0.093951		0.929380	
II	544.308	0.308	+ 3.097	128.862	0.862	+ 2.911		2.669614	9.629588	
4	544.407	0.407	- 2.998	131.860	0.860	+ 0.087	11.572280		0.296409	
							11.666231	2.669614	0.929380	9.925997
							8.996617		8.996617	
									1/2 = 4.4983085	
									= 4.50	

面積計算書

工
区

ブ
ロ
ック

16

計
算
者

精
算
者

備
考

陽加Ⅳ.Ⅱ

点	①	②	③	④	⑤	⑥	③ × ⑤		② × ⑥	
	X	X - (定数)	X _{n-1} - X _{n+1}	Y	Y - (定数)	Y _{n-1} - Y _{n+1}	+	-	+	-
7	⁻¹⁶⁸ 546.591	^{-168.540} 6.591	+ 2.999	⁻⁴⁰ 199.108	^{-40.198} 0.108	- 0.091		0.323897	0.599781	
Ⅲ	546.690	6.690	- 2.900	201.107	2.107	+ 3.090	9.010300			20.672100
8	543.691	3.691	- 0.099	201.198	2.198	- 2.999	0.316607		11.069309	
							9.326907	0.323897	- 11.659090	20.672100
							9.003010			9.003010
									1/2 = 4.501505	
									= 4.50	
10	⁻¹⁶⁸ 510.722	^{-168.507} 2.722	+ 0.098	⁻⁴⁰ 202.196	^{-40.199} 2.196	+ 2.998		0.313208		11.158556
Ⅱ	507.724	0.724	- 3.096	202.287	2.287	- 2.907	10.176552		2.104668	
11	507.626	0.626	+ 2.998	199.289	0.289	- 0.091		0.266422	0.056966	
							10.176552	- 1.179630	2.161634	- 11.158556
							8.996922			8.996922
									1/2 = 4.498461	
									= 4.50	

面積計算書

工
区

ブ
ロ
ック

16

計
算
者

複
算
者

備
考

水碓5号線2-54

点	①	②	③	④	⑤	⑥	③ × ⑤		② × ⑥	
	X	X - (定数)	X _{n-1} - X _{n+1}	Y	Y - (定数)	Y _{n-1} - Y _{n+1}	+	-	+	-
	-148.	-148.500		-40	-40.120					
1	508.352	8.352	+35.375	129.910	9.910	-3.533		250.56250	29.507616	
2	541.310	41.310	+35.540	122.949	8.949	+1.466		318.047460		60.560460
3	543.892	43.892	-35.375	131.376	11.376	+3.533	602.426000			155.070436
16	505.935	5.935	-35.540	132.482	12.482	-1.466	443.610280		8.700710	
							846.036280	668.613710	38.208226	215.630896
							177.422570			177.422570
							$\times \frac{1}{2} = 88.711285$			
							$= 88.711$			

計年月
算日

計
算
者



檢
查
者



B.NO. 16

各筆面積計算書

地番	算式	隅切	地積	摘要
1	大崎 185-1 (0)		589.33	185-4 357.82 185-3 231.51
2	" 185-1 (1)		426.76	
3	" 162-1 (2)		515.72	
4	" 159-1 (0)		448.02	
5	" 190-1 (1)		280.85	
6	" 189 (0)		103.39	
7	" 187-1 (1)		347.53	
	合計		2711.60	
	全面積		2711.61	
		差	-0.01	
	空地面積		2711.60	7筆
	水路面積 5号線 2.5M		88.71	