

街区略図

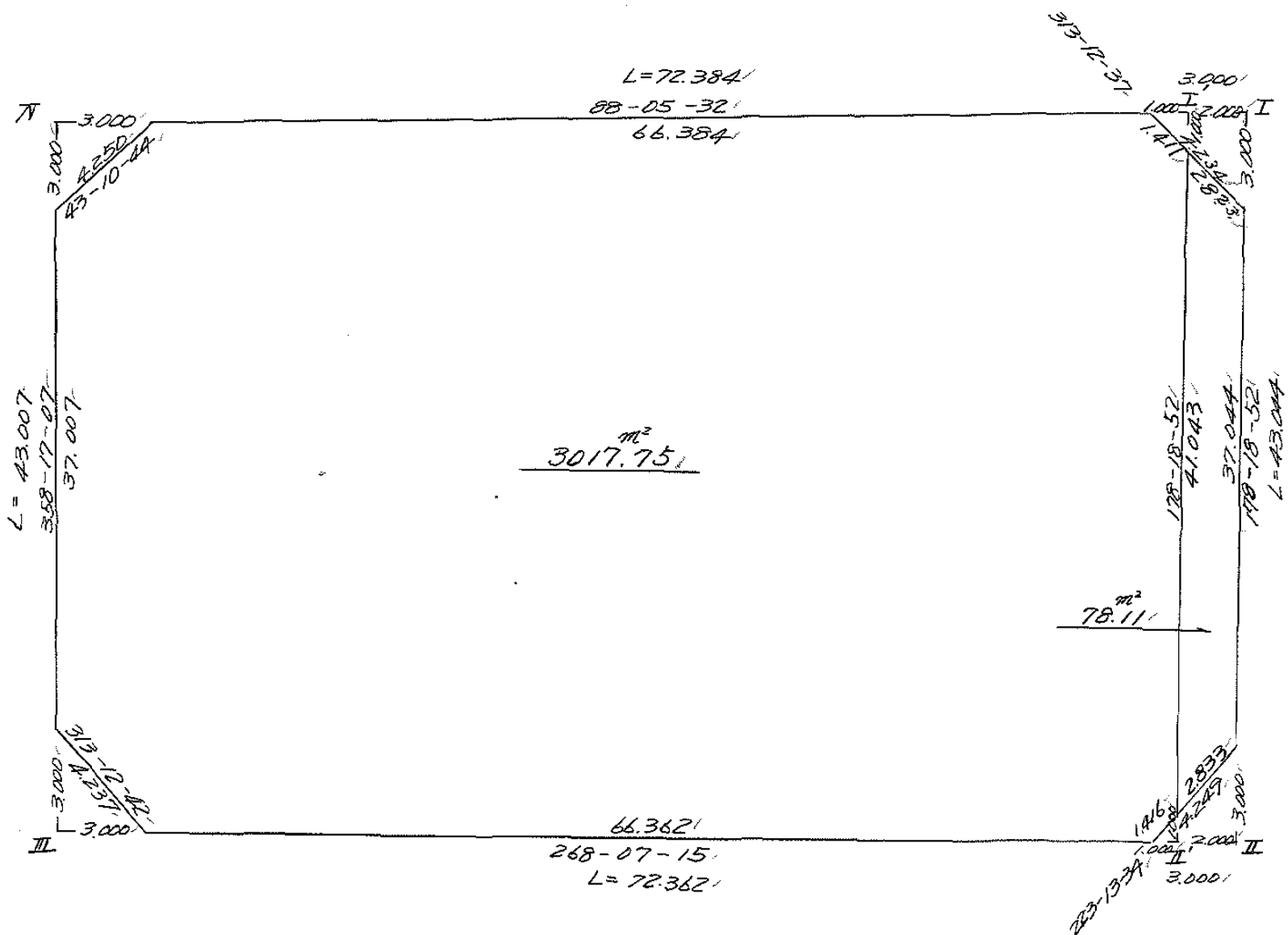
工区

ブロック

17

記入者

点検者



画地計算

画地略図

工区

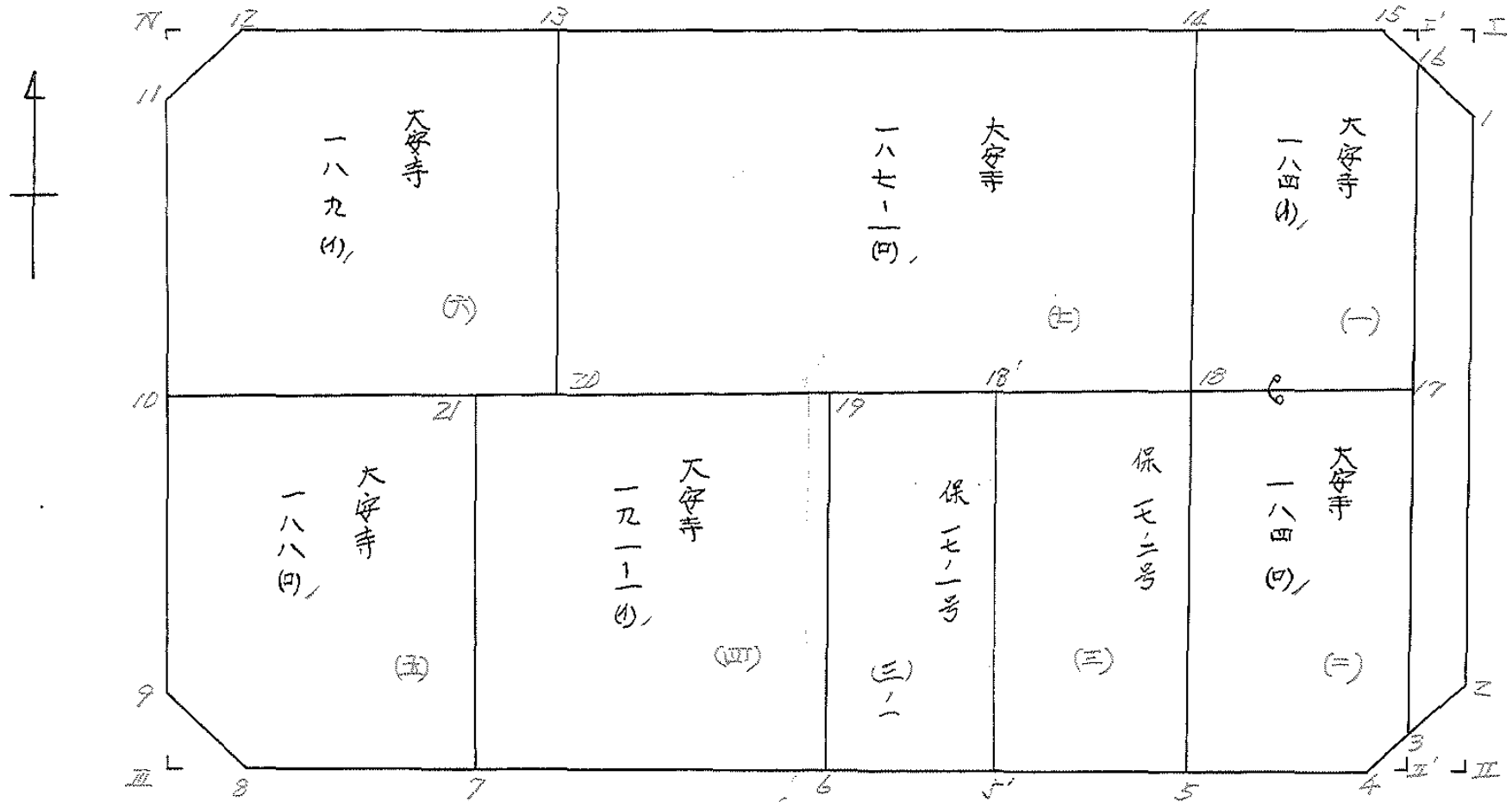
ブロック

17

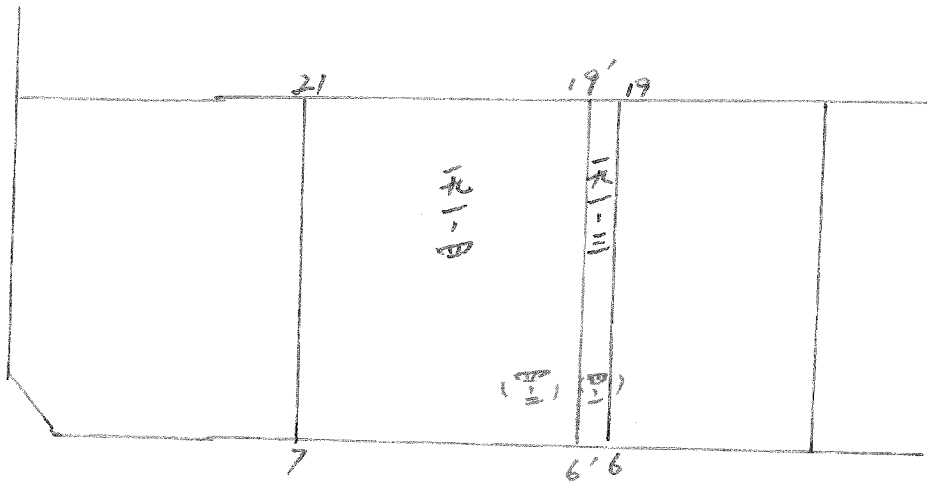
記入者



点検者



BN0.17 分割計算



面積計算書

工
区

ブ
ロ
ック

17

計
算
者

精
算
者

1/1

備
考

1. 大守寺 184 (A)
2. 大守寺 184 (D)

点	①	②	③	④	⑤	⑥	③ × ⑤		② × ⑥	
	X	X-(定数)	X _{n-1} -X _{n+1}	Y	Y-(定数)	Y _{n-1} -Y _{n+1}	+	-	+	-
16	-148 457.382	148.450 -7.382	+22.983	-40 133.375	40.130 -3.375	-1.677			77.567625	12.379614
17	479.399	-29.399	+22.434	132.726	-2.726	+11.953			61.55084	351.406247
18	479.816	-29.816	-22.593	145.328	-15.328	+13.369	346.305504			398.610104
14	456.806	-1.806	-23.400	146.095	-16.095	-10.925	376.623000			74.355550
15	456.416	-6.416	+0.576	134.403	-4.403	-12.720			2.536128	81.611520
									722.928504	141.258837
									168.346684	750.016351
									581.669667	581.669667
									V ₂ = 290.8348335	
17	-148 479.399	148.470 -9.399	+18.592	-40 132.726	40.130 -2.726	-13.160			50.681792	123.690840
3	498.408	-28.408	+20.040	132.168	-2.168	+0.411			43.446720	11.675688
4	499.439	-29.439	+1.410	133.137	-3.137	+12.494			4.423170	367.810866
5	499.818	-29.818	-19.623	144.662	-14.662	+12.191	287.712426			363.511238
18	479.816	-9.816	-20.419	145.328	-15.328	-11.936	312.982432			117.163776
									600.694858	98.551682
									240.854616	742.997792
									502.143176	502.143176
									V ₂ = 251.071588	

面積計算書

工
区

フ
ロ
ック

17

計
算
者



精
算
者



備
考

3 保 17-2号
4 大安寺 191-1(1)

点	①	②	③	④	⑤	⑥	③	×	⑤	②	×	⑥
	X	X-(定数)	X _{n-1} -X _{n+1}	Y	Y-(定数)	Y _{n-1} -Y _{n+1}	+		-	+		-
	-148	148.470		-40	40.140							
18	477.816	-9.816	+19.284	145.328	-5.328	-22.341			102.745152	219.299256		
5	497.818	-29.818	+20.713	144.662	-4.662	+21.008			96.564006			626.46544
6	500.529	-30.529	-19.284	166.336	-26.336	+22.341	507.863424					682.043389
19	480.534	-10.534	-20.713	167.003	-27.003	-21.008	559.313139			221.293272		
						70			1067.176562	199.309158	440.597528	328.444932
									867.867405			867.867405
									$\frac{1}{2} = 433.9337025$			
19	-148	148.480		-40	40.160							
19	480.534	-0.534	+19.297	167.003	-7.003	-21.760			135.136891	11.619340		
6	500.529	-20.529	+20.687	166.336	-6.336	+20.626			131.072832			419.325354
7	501.221	-21.221	-19.297	187.429	-27.429	+21.760	529.297413					461.768960
21	481.232	-1.232	-20.687	188.096	-28.096	-20.426	581.221952			25.164832		
									1110.519365	266.309723	36.784672	881.092314
									844.309442			844.309642
									$\frac{1}{2} = 422.154821$			

面積計算書

工
区

フ
ロ
ック

17

計
算
者

精
算
者

151

備
考

3. 保 17-2号
3-1. 保 17-1号

点	①	②	③	④	⑤	⑥	③ × ⑤		② × ⑥	
	X	X-(定数)	X _{n-1} -X _{n+1}	Y	Y-(定数)	Y _{n-1} -Y _{n+1}	+	-	+	-
18	-148. 479.816	-148.470.0 9.816	+19.643	-40. 145.328	-40.140.0 5.328	-11.503			104.657904	112.913448
5	499.818	29.818	+20.358	144.662	4.662	+10.171			94.908996	303.278878
5'	500.174	30.174	-19.643	155.499	15.499	+11.503	304.446857			347.071522
18'	480.175	10.175	-20.358	156.165	16.165	-10.171	329.087070			103.489925
							633.433927	199.466900	216.403373	650.370400
							433.967027			433.967027
									1/2 = 216.9235135	
18'	-148. 480.175	-148.480.0 0.175	+19.640	-40. 156.165	-40.150.0 6.165	-11.504			121.080600	2.013200
5'	500.174	20.174	+20.354	155.499	5.499	+10.171			111.926646	205.189754
6	500.529	20.529	-19.640	166.336	16.336	+11.504	320.839040			236.165616
18'	480.534	0.534	-20.354	167.003	17.003	-10.171	346.079062			5.431314
							666.918102	233.007246	7.444514	441.255370
							433.910256			433.910256
									1/2 = 216.955428	

面積計算書							工区	ブロック	17	計算者	精算者	備考 (4-1) 191-3 (4-2) 191-4
点	①	②	③	④	⑤	⑥	③ × ⑤		② × ⑥			
	X	X-(定数)	X _{n-1} -X _{n+1}	Y	Y-(定数)	Y _{n-1} -Y _{n+1}	+	-	+	-		
19	^{-168.} 680.534	^{-168.680.} 0.534	+ 19.962	^{-60.} 167.003	^{-40.160.} 7.003	- 1.666		139.773886	0.889644			
6	500.529	20.529	+ 20.028	166.336	6.336	+ 0.332		126.897408		6.815628		
6'	500.562	20.562	- 19.962	167.335	7.335	+ 1.666	146.421270			34.256292		
19'	680.567	0.567	+ 20.028	168.002	8.002	- 0.332	160.264056		0.188244			
							306.685326	266.691294	1.077888	41.071920		
							39.994032			39.994032		
							39.994032 × 1/2 = 19.997016					
19'	^{-168.} 680.567	^{-168.680.} 0.567	+ 19.330	^{-60.} 168.002	^{-40.167.} 1.002	- 20.761		19.368660	11.771487			
6'	500.562	20.562	+ 20.654	167.335	0.335	+ 19.427		6.919090		399.457974		
7	501.221	21.221	- 19.330	187.629	20.629	+ 20.761	394.892570			440.569181		
21	681.232	1.232	- 20.654	188.096	21.096	- 19.427	435.716784		23.934064			
							830.609354	26.287750	35.705551	840.027150		
							804.321604			804.321604		
							804.321604 × 1/2 = 402.160802					

面積計算書

工
区

ブ
ロ
ック

17

計
算
者

結
算
者

備
考

5 大守寺 188 (D)
6 大守寺 189 (A)

点	①	②	③	④	⑤	⑥	③	×	⑤	②	×	⑤
	X	X-(定数)	X _{n-1} -X _{n+1}	Y	Y-(定数)	Y _{n-1} -Y _{n+1}	+		-	+		-
21	⁻¹⁴⁸ 481.232	^{-148.480} 1.232	+19.494	⁻⁴⁰ 188.096	^{-40.180} 8.096	-15.631				157.823424	19.257392	
7	501.221	21.221	+20.384	187.429	7.429	+11.368				151.432736		241.240328
8	501.616	21.616	-2.506	199.464	19.464	+15.123	48.776784					326.898768
9	498.715	18.715	-19.889	202.552	22.552	+3.596	448.536728					57.299140
10	481.727	1.727	-17.483	203.060	23.060	-14.456	403.157980			24.965512		
							900.471492		309.256160	44.222904	635.438236	
							591.215332					591.215332
										$\frac{1}{2}=295.607666$		
13	⁻¹⁴⁸ 458.060	^{-148.450} 8.060	+22.437	⁻⁴⁰ 183.752	^{-40.180} 3.752	-17.763				84.183624	143.167780	
20	481.063	31.063	+23.667	182.988	2.988	+19.308				70.716996		599.764404
10	481.727	31.727	-19.338	203.060	23.060	+20.671	445.934280					655.828817
11	461.725	11.725	-23.101	203.659	23.659	-2.309	546.546559					27.073025
12	458.626	8.626	-3.665	200.751	20.751	-19.907	76.052415					171.717782
							1068.533254		154.900620	341.960587	1255.593221	
							913.632634					913.632634
										$\frac{1}{2}=456.816317$		

面積計算書

工
区

フ
ロ
ック

17

計
算
者



精
算
者



備
考

7 大等 127-1(10)

点	①	②	③	④	⑤	⑥	③	×	⑤	②	×	⑥
	X	X-(定数)	X _{n-1} -X _{n+1}	Y	Y-(定数)	Y _{n-1} -Y _{n+1}	+		-	+		-
	-148	148.450		-40	40.180							
14	456.802	- 6.806	+21.756	146.095	- 6.095	-38.424			132.602820	261.513744		
18	479.816	-29.816	+24.257	145.328	- 5.328	+36.893			129.241296		1100.001688	
20	421.063	- 31.063	- 21.756	182.988	- 42.988	+38.424	935.246928				1193.564712	
13	458.060	- 8.060	- 24.257	183.752	- 43.752	- 36.893	1061.292264			297.357580		
							1996.539192		261.844116	558.871324	2293.566400	
							1734.695076				1734.695076	
										1/2 = 867.347538		

面積計算書

工
区

フ
ロ
ック

17

計
算
者

精
算
者

備
考

水碓 7号線

点	①	②	③	④	⑤	⑥	③ × ⑤		② × ⑥	
	X	X-(定数)	X _{n-1} -X _{n+1}	Y	Y-(定数)	Y _{n-1} -Y _{n+1}	+	-	+	-
	-148	-148.450		-40	-40.730					
1	459.315	9.315	+38.961	131.317	1.317	-3.148		51.311637	29.323620	
2	496.343	46.343	+39.093	130.227	0.227	+0.851		3.874111		29.437893
3	498.408	48.408	-38.961	132.168	2.168	+3.148	84.467448			152.388384
16	457.382	7.382	-39.093	133.375	3.375	-0.851	131.932875		6.292082	
							216.406323	60.185748	35.605702	191.826277
							156.220575			156.220575
							× 1/2 = 78.1102875			
							= 78.11			

面積計算書

工
区

ブ
ロ
ック

17

計
算
者



精
算
者



備
考

隅切 I, II

点	①	②	③	④	⑤	⑥	③ × ⑤		② × ⑥	
	X	X - (定数)	X _{n-1} - X _{n+1}	Y	Y - (定数)	Y _{n-1} - Y _{n+1}	+	-	+	-
I	-148 456.316	-148.456 0.316	+2.899	-40 131.405	-40.131 0.405	-3.086		1.174095	0.975176	
1	459.315	3.315	+0.100	131.317	0.317	+2.998		0.031700		9.938370
15	456.416	0.416	-2.999	134.403	3.403	+0.088	10.205597			0.036608
							10.205597	1.205795	0.975176	9.974978
							8.999802			8.999802
							x 1/2 = 4.499901 = 4.50			
Z	-148 496.343	-148.496 0.343	-0.098	-40 130.227	-40.130 0.227	-2.998	0.022246		1.028314	
II	499.341	3.341	+3.096	130.139	0.139	+2.910		0.430344		9.722310
4	499.439	3.439	-2.998	133.137	3.137	+0.088	9.404726			0.302632
							9.426972	0.430344	1.028314	10.024942
							8.996628			8.996628
							x 1/2 = 4.498314 = 4.50			

面積計算書

工
区

ブ
ロ
ック

17

計
算
者

測
量
者

計
算
者



備
考

隅切Ⅲ, Ⅳ

点	①	②	③	④	⑤	⑥	③ × ⑤		② × ⑥	
	X	X - (定数)	X _{n-1} - X _{n+1}	Y	Y - (定数)	Y _{n-1} - Y _{n+1}	+	-	+	-
8	501.616 501.616	-148.498 3.616	+2.999	199.464 199.464	-40.199 0.464	-0.090		1.391536	0.325440	
Ⅲ	501.714	3.714	-2.901	202.462	3.462	+2.088	10.043262			11.468832
9	498.715	0.715	-0.098	202.552	3.552	-2.998	0.342096		2.143570	
							10.291358	1.391536	2.469010	11.468832
							8.999828			8.999822
							x ^{1/2} = 4.4ppp11 ≐ 4.50			
11	461.725 461.725	-148.458 3.725	+0.100	203.659 203.659	-40.200 3.659	+2.998		0.365900		11.167550
Ⅳ	458.726	0.726	-3.099	203.749	3.749	-2.908	11.618151		2.111208	
12	458.626	0.626	+2.999	200.751	0.751	-0.090		2.252249	0.056340	
							11.618151	2.618149	2.167548	11.167550
							P.000000 ≐ P.000000			
							x ^{1/2} = 4.500000 ≐ 4.50			

